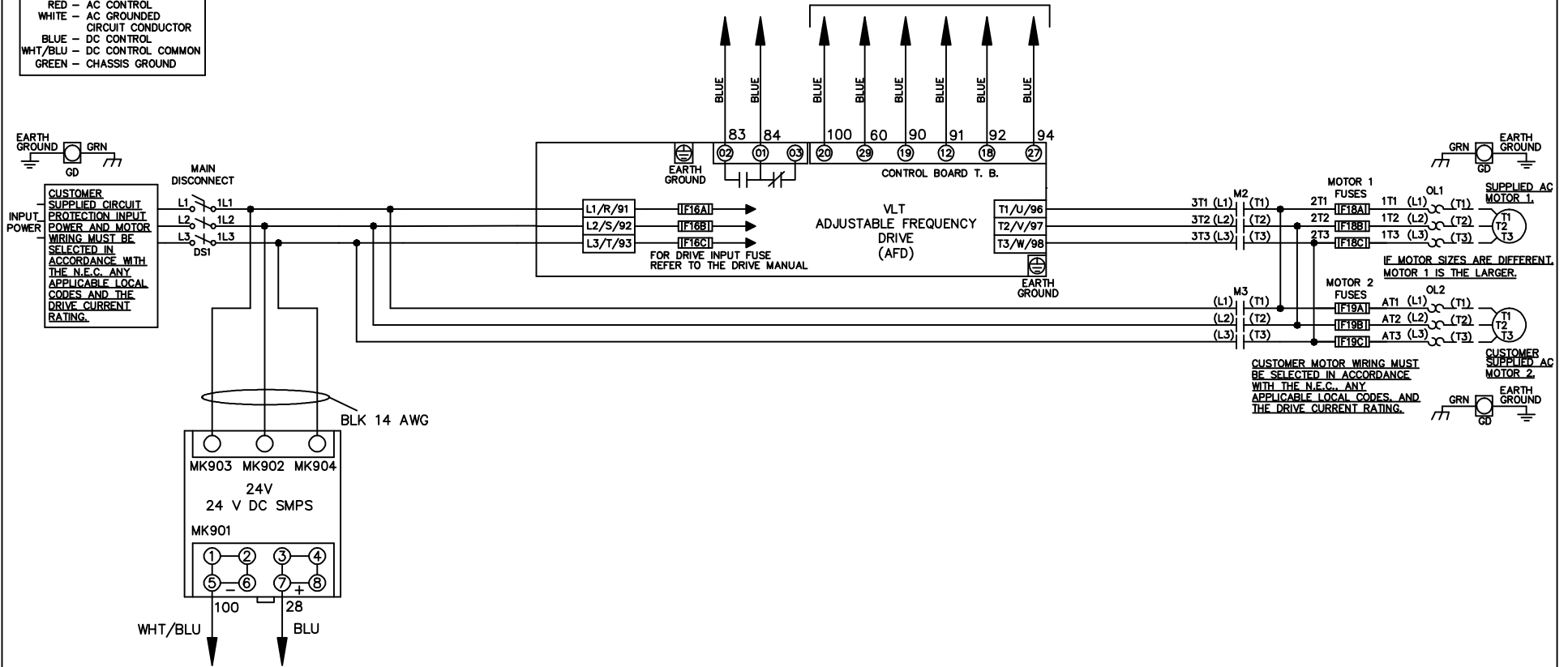


**WIRE COLOR SCHEME**  
 BLACK - LINE VOLTAGE  
 RED - AC CONTROL  
 WHITE - AC GROUNDED  
 WHITE - CIRCUIT CONDUCTOR  
 BLUE - DC CONTROL  
 WHT/BLU - DC CONTROL COMMON  
 GREEN - CHASSIS GROUND

\* ALL CONTROL WIRES ARE BLUE EXCEPT WHERE NOTED. TO ELECTROMECHANICAL RELAY BOARD



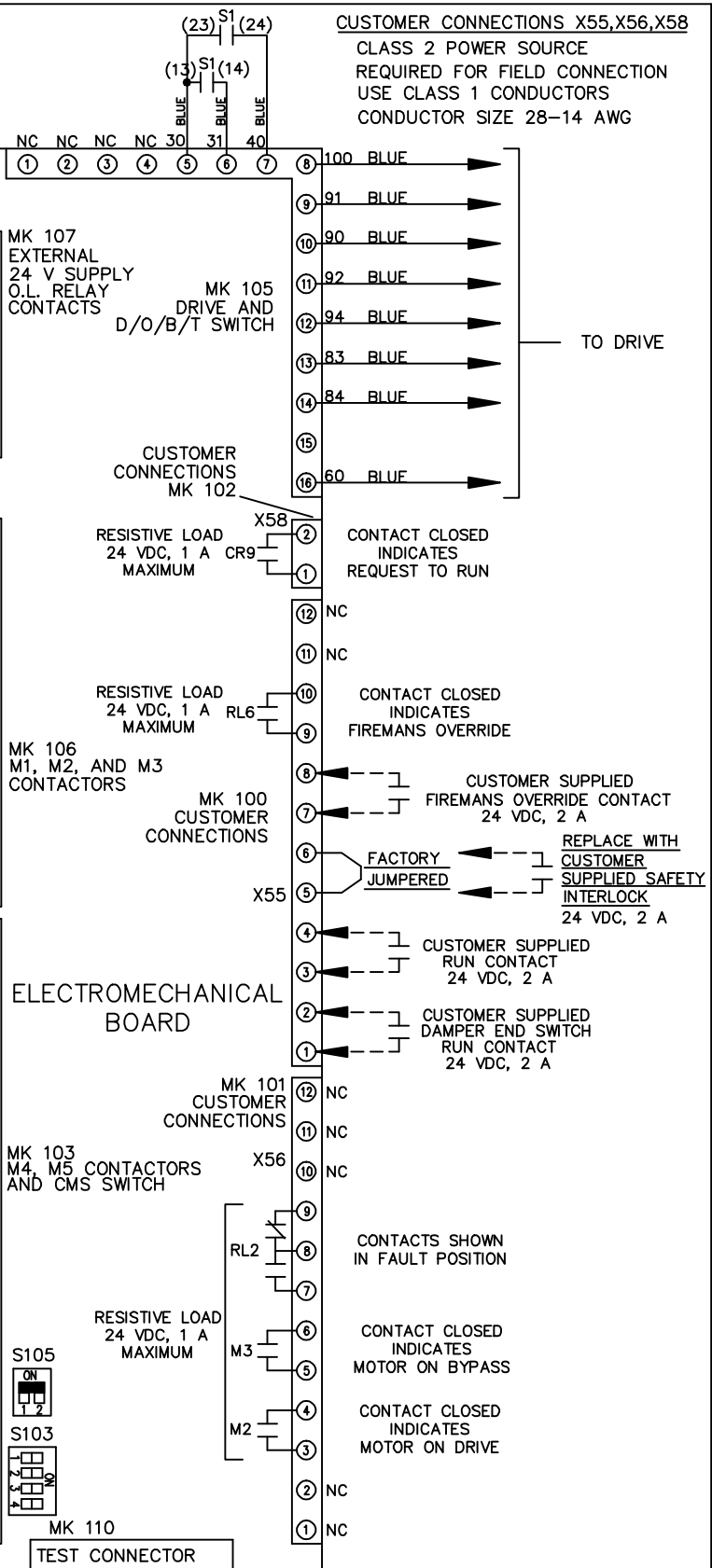
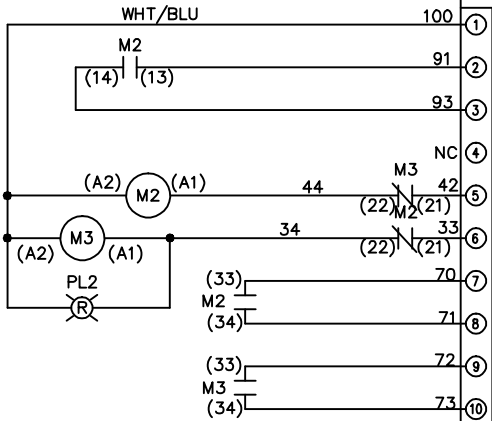
			-NOTICE-		DRN JNW 2/14/07		NAME 208-600VOLT,2C,MAIN DISC ,DRIVE FUSE,EMB2,FRAME A5-B1 ,NO REACTOR & DVDT,DUAL MTR		THE TRANE COMPANY A DIVISION OF AMERICAN STANDARD INC.	
A	SP08061	10/08	THIS DRAWING IS PROPRIETARY AND SHALL NOT BE COPIED OR ITS CONTENTS DISCLOSED TO OUTSIDE PARTIES WITHOUT THE WRITTEN CONSENT OF THE TRANE COMPANY			APR	MODEL	PAGE 1 OF 2	SIZE A	DWG NO. 174U0213
REV	ECN	DATE								

REV	ECN	DATE
A	SP08066	10/08

CONTACT SEQUENCE CHART FOR S1 X INDICATES CONTACT CLOSED	
POSITION	CONTACT
DRIVE	13-14
OFF	13-14
BYPASS	23-24
	X

THIS DRAWING IS PROPRIETARY AND SHALL NOT BE COPIED OR ITS CONTENTS DISCLOSED TO OUTSIDE PARTIES WITHOUT THE WRITTEN CONSENT OF THE TRANE COMPANY

NOTICE -



CUSTOMER CONNECTIONS X55, X56, X58  
 CLASS 2 POWER SOURCE  
 REQUIRED FOR FIELD CONNECTION  
 USE CLASS 1 CONDUCTORS  
 CONDUCTOR SIZE 28-14 AWG

ELECTROMECHANICAL BOARD

MK 101 CUSTOMER CONNECTIONS

MK 103 M4, M5 CONTACTORS AND CMS SWITCH

MK 105 DRIVE AND D/O/B/T SWITCH

MK 106 M1, M2, AND M3 CONTACTORS

MK 107 EXTERNAL 24 V SUPPLY O.L. RELAY CONTACTS

MK 110 TEST CONNECTOR

RESISTIVE LOAD 24 VDC, 1 A MAXIMUM

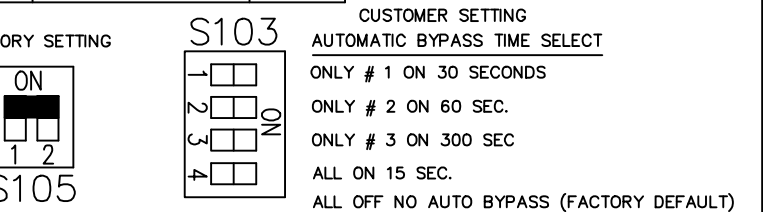
RESISTIVE LOAD 24 VDC, 1 A MAXIMUM

RESISTIVE LOAD 24 VDC, 1 A MAXIMUM

RESISTIVE LOAD 24 VDC, 1 A MAXIMUM

RESISTIVE LOAD 24 VDC, 1 A MAXIMUM

- 100 BLUE
- 91 BLUE
- 90 BLUE
- 92 BLUE
- 94 BLUE
- 83 BLUE
- 84 BLUE
- 60 BLUE
- CONTACT CLOSED INDICATES REQUEST TO RUN
- CONTACT CLOSED INDICATES FIREMANS OVERRIDE
- CUSTOMER SUPPLIED FIREMANS OVERRIDE CONTACT 24 VDC, 2 A
- REPLACE WITH CUSTOMER SUPPLIED SAFETY INTERLOCK 24 VDC, 2 A
- CUSTOMER SUPPLIED RUN CONTACT 24 VDC, 2 A
- CUSTOMER SUPPLIED DAMPER END SWITCH RUN CONTACT 24 VDC, 2 A
- CONTACTS SHOWN IN FAULT POSITION
- CONTACT CLOSED INDICATES MOTOR ON BYPASS
- CONTACT CLOSED INDICATES MOTOR ON DRIVE



ONLY # 1 ON 30 SECONDS  
 ONLY # 2 ON 60 SEC.  
 ONLY # 3 ON 300 SEC  
 ALL ON 15 SEC.  
 ALL OFF NO AUTO BYPASS (FACTORY DEFAULT)

DRN	JNW
2/14/07	

NAME 208-600VOLT, 2C, MAIN DISC  
 DRIVE FUSE, EMB2, FRAME A5-B1  
 NO REACTOR & DVDI, DUAL MTR

PAGE	2 OF 2
SIZE	A
DWG NO.	174U0213

THE TRANE COMPANY  
 A DIVISION OF  
 AMERICAN STANDARD INC.