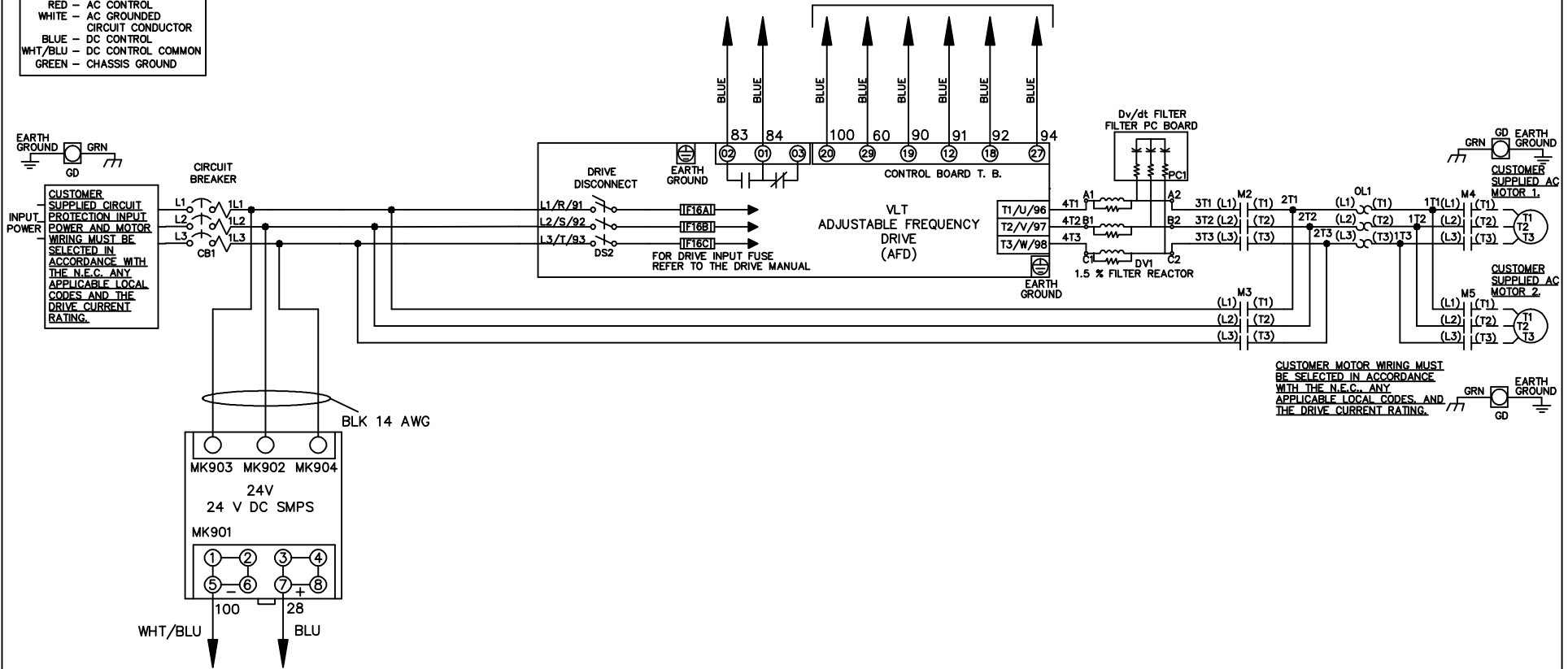


**WIRE COLOR SCHEME**  
 BLACK - LINE VOLTAGE  
 RED - AC CONTROL  
 WHITE - AC GROUNDED  
 WHITE - CIRCUIT CONDUCTOR  
 BLUE - DC CONTROL  
 WHT/BLU - DC CONTROL COMMON  
 GREEN - CHASSIS GROUND

\* ALL CONTROL WIRES ARE BLUE EXCEPT WHERE NOTED. TO ELECTROMECHANICAL RELAY BOARD



			- NOTICE -		DRN JNW 2/14/07		NAME 208-600VOLT,2C,CB & DRIVE DISC ,DRIVE FUSE,EMB2,FRAME A5-B1 ,DVDT,CMS		<i>Danfoss</i>	
A	SP08061	10/08	THIS DOCUMENT CONTAINS PROPRIETARY INFORMATION OF DANFOSS DRIVES. IT IS LOANED BY DANFOSS DRIVES SUBJECT TO THE CONDITIONS THAT IT AND THE INFORMATION EMBODIED THEREIN SHALL BE USED ONLY FOR RECORD AND REFERENCE PURPOSES, SHALL NOT BE USED OR CAUSED TO BE USED IN ANY WAY PREJUDICIAL TO THE INTERESTS OF DANFOSS DRIVES, SHALL NOT BE REPRODUCED OR COPIED IN WHOLE OR IN PART, OR DISCLOSED TO ANYONE WITHOUT THE DIRECT WRITTEN PERMISSION OF DANFOSS DRIVES AND SHALL BE RETURNED UPON REQUEST.			APR	MODEL	PAGE 1 OF 2	SIZE A	DWG NO. 174U0384
REV	ECN	DATE								

REV	ECN	DATE
A	SP08066	10/08

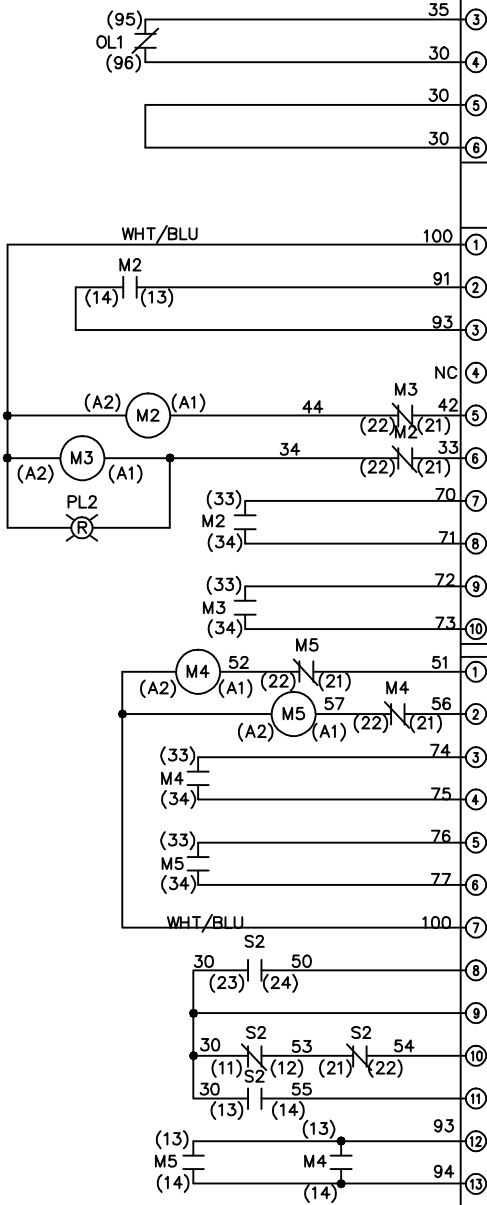
CONTACT SEQUENCE CHART FOR S1	
POSITION	X INDICATES CONTACT CLOSED
CONTACT	
13-14	
23-24	X

**NOTICE**  
 THIS DOCUMENT CONTAINS PROPRIETARY INFORMATION OF DANFOSS DRIVES. IT IS LOANED BY DANFOSS DRIVES SUBJECT TO THE CONDITIONS THAT IT AND THE INFORMATION EMBODIED THEREIN SHALL BE USED ONLY FOR RECORD AND REFERENCE PURPOSES. SHALL NOT BE USED OR CAUSED TO BE USED IN ANY WAY PREJUDICIAL TO THE INTERESTS OF DANFOSS DRIVES. SHALL NOT BE REPRODUCED OR COPIED IN WHOLE OR IN PART, OR DISCLOSED TO ANYONE WITHOUT THE DIRECT WRITTEN PERMISSION OF DANFOSS DRIVES AND SHALL BE RETURNED UPON REQUEST.

DRN JNW  
 2/14/07  
 APR

MODEL NAME 208-600VOLT, 2C,CB & DRIVE DISC  
 ,DRIVE FUSE,EMB2,FRAME A5-B1  
 ,DVDT,CMS

PAGE 2 OF 2  
 SIZE A  
 DWG NO. 174U0384



CONTACT SEQUENCE CHART FOR S2	
POSITION	X INDICATES CONTACT CLOSED
CONTACT	
11-12	X
13-14	X
21-22	X
23-24	X

**CUSTOMER CONNECTIONS X55,X56,X58**  
 CLASS 2 POWER SOURCE  
 REQUIRED FOR FIELD CONNECTION  
 USE CLASS 1 CONDUCTORS  
 CONDUCTOR SIZE 28-14 AWG

TO DRIVE

**ELECTROMECHANICAL BOARD**

MK 107 EXTERNAL 24 V SUPPLY O.L. RELAY CONTACTS

MK 105 DRIVE AND D/O/B/T SWITCH

MK 106 M1, M2, AND M3 CONTACTORS

MK 103 M4, M5 CONTACTORS AND CMS SWITCH

MK 100 CUSTOMER CONNECTIONS

MK 101 CUSTOMER CONNECTIONS

MK 110 TEST CONNECTOR

RESISTIVE LOAD 24 VDC, 1 A CR9 MAXIMUM

RESISTIVE LOAD 24 VDC, 1 A M4 MAXIMUM

RESISTIVE LOAD 24 VDC, 1 A RL6 MAXIMUM

RESISTIVE LOAD 24 VDC, 1 A M3 MAXIMUM

RESISTIVE LOAD 24 VDC, 1 A M5 MAXIMUM

CONTACT CLOSED INDICATES REQUEST TO RUN

CONTACT CLOSED INDICATES MOTOR 1 SELECTED

CONTACT CLOSED INDICATES FIREMANS OVERRIDE

CUSTOMER SUPPLIED FIREMANS OVERRIDE CONTACT 24 VDC, 2 A

REPLACE WITH CUSTOMER SUPPLIED SAFETY INTERLOCK 24 VDC, 2 A

CUSTOMER SUPPLIED RUN CONTACT 24 VDC, 2 A

CUSTOMER SUPPLIED DAMPER END SWITCH RUN CONTACT 24 VDC, 2 A

CUSTOMER SUPPLIED CONTACT TO SELECT MOTOR 1

CUSTOMER SUPPLIED CONTACT TO SELECT MOTOR 2 24 VDC, 2 A

CONTACTS SHOWN IN FAULT POSITION

CONTACT CLOSED INDICATES MOTOR ON BYPASS

CONTACT CLOSED INDICATES MOTOR ON DRIVE

CONTACT CLOSED INDICATES MOTOR 2 SELECTED

**CUSTOMER SETTING**  
 AUTOMATIC BYPASS TIME SELECT

ONLY # 1 ON 30 SECONDS

ONLY # 2 ON 60 SEC.

ONLY # 3 ON 300 SEC

ALL ON 15 SEC.

ALL OFF NO AUTO BYPASS (FACTORY DEFAULT)

**S103**

1  2  3  4

**S105**

WITHOUT CMS  1  2

WITH CMS  1  2

