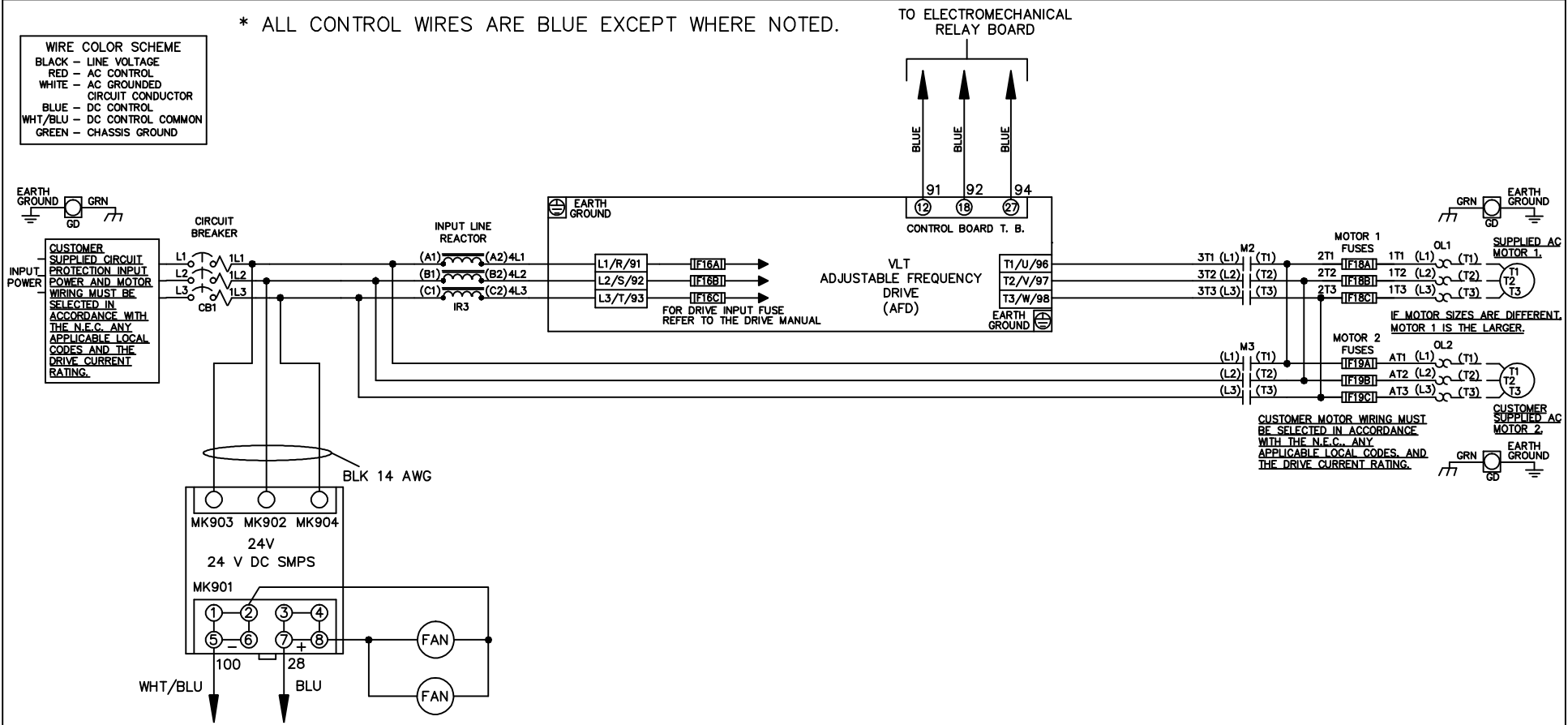


\* ALL CONTROL WIRES ARE BLUE EXCEPT WHERE NOTED.

**WIRE COLOR SCHEME**

BLACK	-	LINE VOLTAGE
RED	-	AC CONTROL
WHITE	-	AC GROUNDED CIRCUIT CONDUCTOR
BLUE	-	DC CONTROL
WHT/BLU	-	DC CONTROL COMMON
GREEN	-	CHASSIS GROUND



			- NOTICE -		DRN JNW		NAME 208-600VOLT, 2C, CB		<i>Danfoss</i>			
					2/14/07		,DRIVE FUSE, EMB1, FRAME C1N12					
A	SP08061	10/08	THIS DOCUMENT CONTAINS PROPRIETARY INFORMATION OF DANFOSS DRIVES. IT IS LOANED BY DANFOSS DRIVES SUBJECT TO THE CONDITIONS THAT IT AND THE INFORMATION EMBODIED THEREIN SHALL BE USED ONLY FOR RECORD AND REFERENCE PURPOSES, SHALL NOT BE USED OR CAUSED TO BE USED IN ANY WAY PREJUDICIAL TO THE INTERESTS OF DANFOSS DRIVES, SHALL NOT BE REPRODUCED OR COPIED IN WHOLE OR IN PART, OR DISCLOSED TO ANYONE WITHOUT THE DIRECT WRITTEN PERMISSION OF DANFOSS DRIVES AND SHALL BE RETURNED UPON REQUEST.		APR		,REACTOR, DUAL MTR					
REV	ECN	DATE					MODEL		PAGE 1 OF 2		SIZE A DWG NO. 174U0636	

POSITION	DRIVE	OFF	BYPASS
13-14			X
23-24	X		

CONTACT SEQUENCE CHART FOR S1  
X INDICATES CONTACT CLOSED

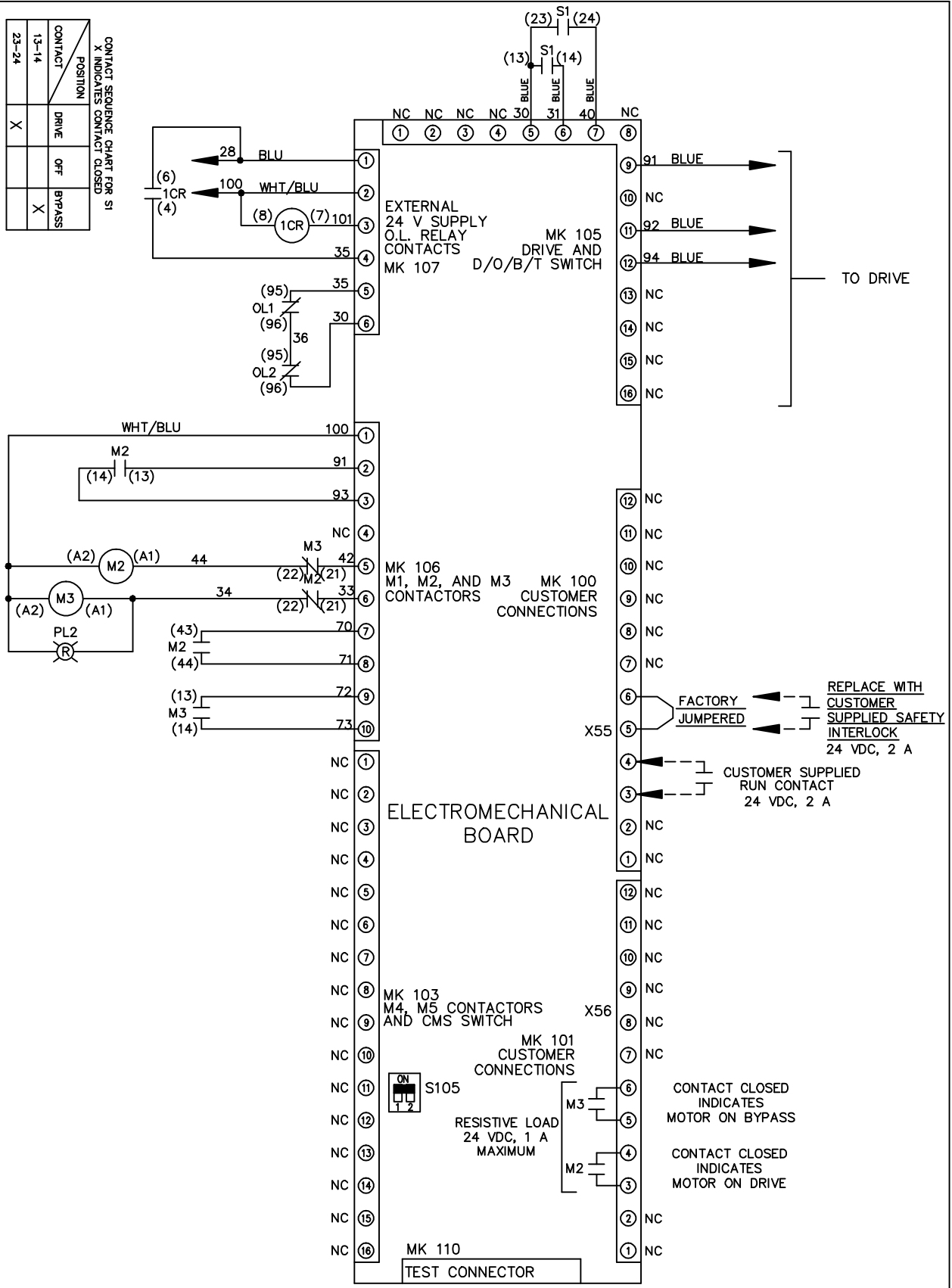
REV	ECN	DATE
A	SP08066	10/08

NOTICE  
THIS DOCUMENT CONTAINS PROPRIETARY INFORMATION OF DANFOSS DRIVES. IT IS LOANED BY DANFOSS DRIVES SUBJECT TO THE CONDITIONS THAT IT AND THE INFORMATION EMBODIED THEREIN SHALL BE USED ONLY FOR RECORD AND REFERENCE PURPOSES. SHALL NOT BE USED OR CAUSED TO BE USED IN ANY WAY PREJUDICIAL TO THE INTERESTS OF DANFOSS DRIVES. SHALL NOT BE REPRODUCED OR COPIED IN WHOLE OR IN PART, OR DISCLOSED TO ANYONE WITHOUT THE DIRECT WRITTEN PERMISSION OF DANFOSS DRIVES AND SHALL BE RETURNED UPON REQUEST.

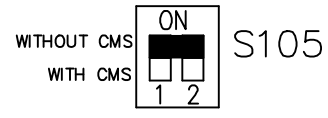
DRN	JNW
APR	2/14/07

NAME 208-600VOLT, 2C,CB  
DRIVE FUSE, EMB1, FRAME C1N12  
REACTOR, DUAL MTR

PAGE	2 OF 2
SIZE	A
DWG NO.	174U0636



FACTORY SETTING



CUSTOMER CONNECTIONS X55, X56  
CLASS 2 POWER SOURCE  
REQUIRED FOR FIELD CONNECTION  
USE CLASS 1 CONDUCTORS  
CONDUCTOR SIZE 28-14 AWG