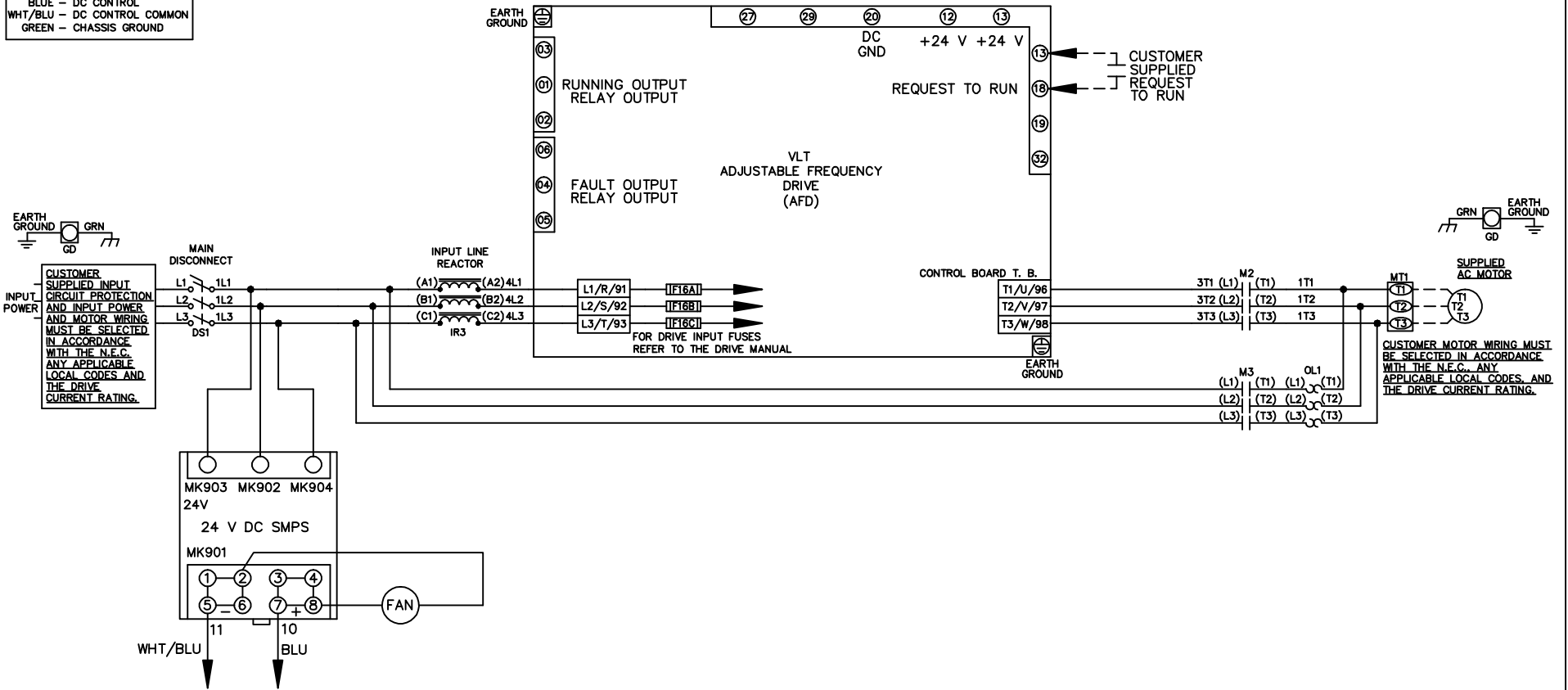


WIRE COLOR SCHEME  
 BLACK - LINE VOLTAGE  
 RED - AC CONTROL  
 WHITE - AC GROUNDED  
 CIRCUIT CONDUCTOR  
 BLUE - DC CONTROL  
 WHT/BLU - DC CONTROL COMMON  
 GREEN - CHASSIS GROUND



- NOTICE -

THIS DOCUMENT CONTAINS PROPRIETARY INFORMATION OF DANFOSS DRIVES. IT IS LOANED BY DANFOSS DRIVES SUBJECT TO THE CONDITIONS THAT IT AND THE INFORMATION EMBODIED THEREIN SHALL BE USED ONLY FOR RECORD AND REFERENCE PURPOSES, SHALL NOT BE USED OR CAUSED TO BE USED IN ANY WAY PREJUDICIAL TO THE INTERESTS OF DANFOSS DRIVES, SHALL NOT BE REPRODUCED OR COPIED IN WHOLE OR IN PART, OR DISCLOSED TO ANYONE WITHOUT THE DIRECT WRITTEN PERMISSION OF DANFOSS DRIVES AND SHALL BE RETURNED UPON REQUEST.

DRN JNW  
 2/14/07

NAME 208-600VOLT, 2C, MAIN DISC  
 ,DRIVE FUSE, ECB, FRAME C1N12  
 ,REACTOR, SINGLE MTR

*Danfoss*

A SP08061 10/08  
 REV ECN DATE

APR

MODEL

PAGE 1 OF 2

SIZE A

DWG NO.

174U0730

REV	A	SP08066	10/08
ECN			
DATE			

THIS DOCUMENT CONTAINS PROPRIETARY INFORMATION OF DANFOSS DRIVES. IT IS LOANED BY DANFOSS DRIVES SUBJECT TO THE CONDITIONS THAT IT AND THE INFORMATION EMBODIED THEREIN SHALL BE USED ONLY FOR RECORD AND REFERENCE PURPOSES. SHALL NOT BE USED OR CAUSED TO BE USED IN ANY WAY PREJUDICIAL TO THE INTERESTS OF DANFOSS DRIVES. SHALL NOT BE REPRODUCED OR COPIED IN WHOLE OR IN PART, OR DISCLOSED TO ANYONE WITHOUT THE DIRECT WRITTEN PERMISSION OF DANFOSS DRIVES AND SHALL BE RETURNED UPON REQUEST.

DRN JNW  
2/14/07  
APR

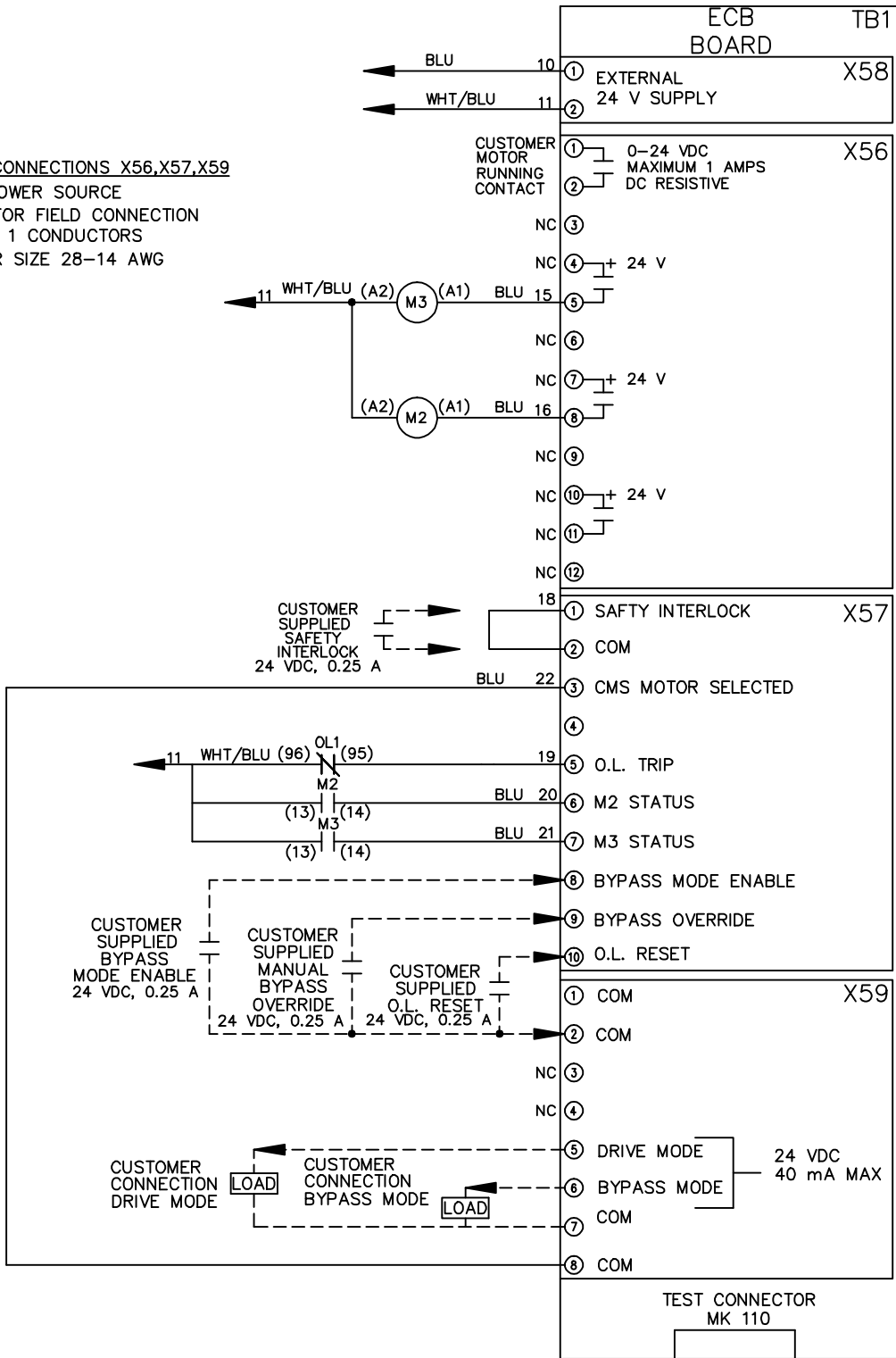
NAME 208-600VOLT,2C,MAIN DISC  
,DRIVE FUSE,ECB,FRAME C1N12  
,REACTOR,SINGLE MTR

MODEL  
PAGE 2 OF 2  
SIZE A  
DWG NO. 174U0730



**CUSTOMER CONNECTIONS X56,X57,X59**

CLASS 2 POWER SOURCE  
REQUIRED FOR FIELD CONNECTION  
USE CLASS 1 CONDUCTORS  
CONDUCTOR SIZE 28-14 AWG



**ECB BOARD TB1**

① EXTERNAL 24 V SUPPLY  
②

CUSTOMER MOTOR RUNNING CONTACT  
① 0-24 VDC MAXIMUM 1 AMPS DC RESISTIVE  
②

NC ③  
NC ④ + 24 V  
⑤  
NC ⑥  
NC ⑦ + 24 V  
⑧  
NC ⑨  
NC ⑩ + 24 V  
NC ⑪  
NC ⑫

① SAFTY INTERLOCK  
② COM  
③ CMS MOTOR SELECTED

④  
⑤ O.L. TRIP  
⑥ M2 STATUS  
⑦ M3 STATUS  
⑧ BYPASS MODE ENABLE  
⑨ BYPASS OVERRIDE  
⑩ O.L. RESET

① COM  
② COM  
NC ③  
NC ④

⑤ DRIVE MODE  
⑥ BYPASS MODE  
⑦ COM  
⑧ COM

TEST CONNECTOR MK 110