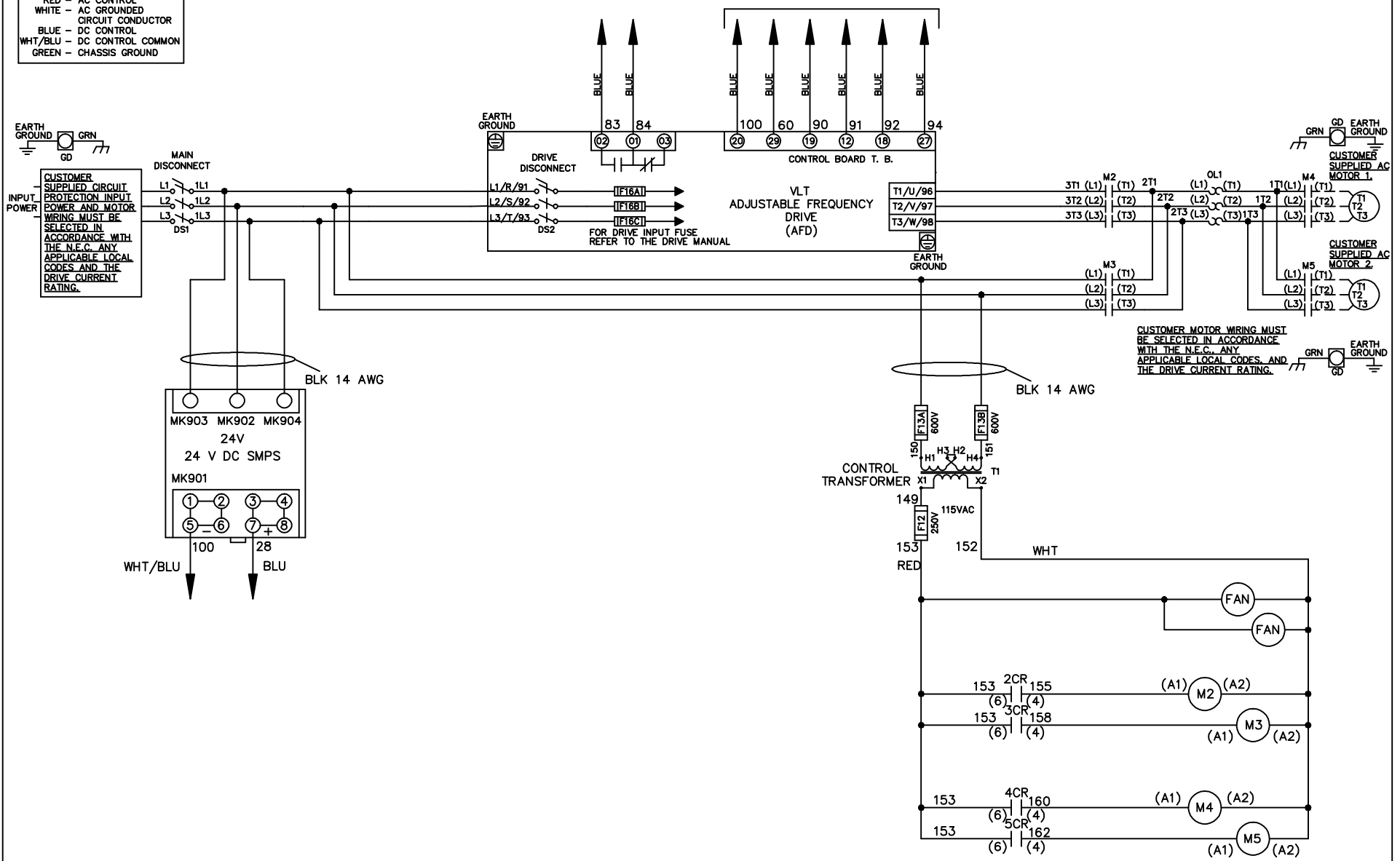


**WIRE COLOR SCHEME**  
 BLACK - LINE VOLTAGE  
 RED - AC CONTROL  
 WHITE - AC GROUNDED  
 CIRCUIT CONDUCTOR  
 BLUE - DC CONTROL  
 WHT/BLU - DC CONTROL COMMON  
 GREEN - CHASSIS GROUND

\* ALL CONTROL WIRES ARE BLUE EXCEPT WHERE NOTED. TO ELECTROMECHANICAL RELAY BOARD



-NOTICE-

THIS DRAWING IS PROPRIETARY AND SHALL NOT BE COPIED OR ITS CONTENTS DISCLOSED TO OUTSIDE PARTIES WITHOUT THE WRITTEN CONSENT OF THE TRANE COMPANY

DRN JNW  
2/8/07

NAME 460 VOLT, 2C, MAIN & DRIVE DISC  
 , DRIVE FUSE, EMB2, FRAME D1-D2  
 , NO REACTOR & DVDT, CMS

THE TRANE COMPANY  
 A DIVISION OF  
 AMERICAN STANDARD INC.

A	SP08061	10/08
REV	ECN	DATE

APR

MODEL

PAGE 1 OF 2

SIZE A

DWG NO.

174U0795

REV	A	ECON	DATE	DRN JNW	APR	MODEL	PAGE 2 OF 2	SIZE A	DWG NO.
	SP08066	10/08		2/14/07					174U0795
THIS DRAWING IS PROPRIETARY AND SHALL NOT BE COPIED OR ITS CONTENTS DISCLOSED TO OUTSIDE PARTIES WITHOUT THE WRITTEN CONSENT OF THE TRANE COMPANY				NAME 460 VOLT, 2C MAIN & DRIVE DISC, DRIVE FUSE, EMB2, FRAME D1-D2, NO REACTOR & DVDI, CMS			THE TRANE COMPANY A DIVISION OF AMERICAN STANDARD INC.		

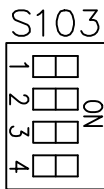
CONTACT SEQUENCE CHART FOR S1  
X INDICATES CONTACT CLOSED

POSITION	CONTACT	DRIVE	OFF	BYPASS
13-14				X
23-24		X		



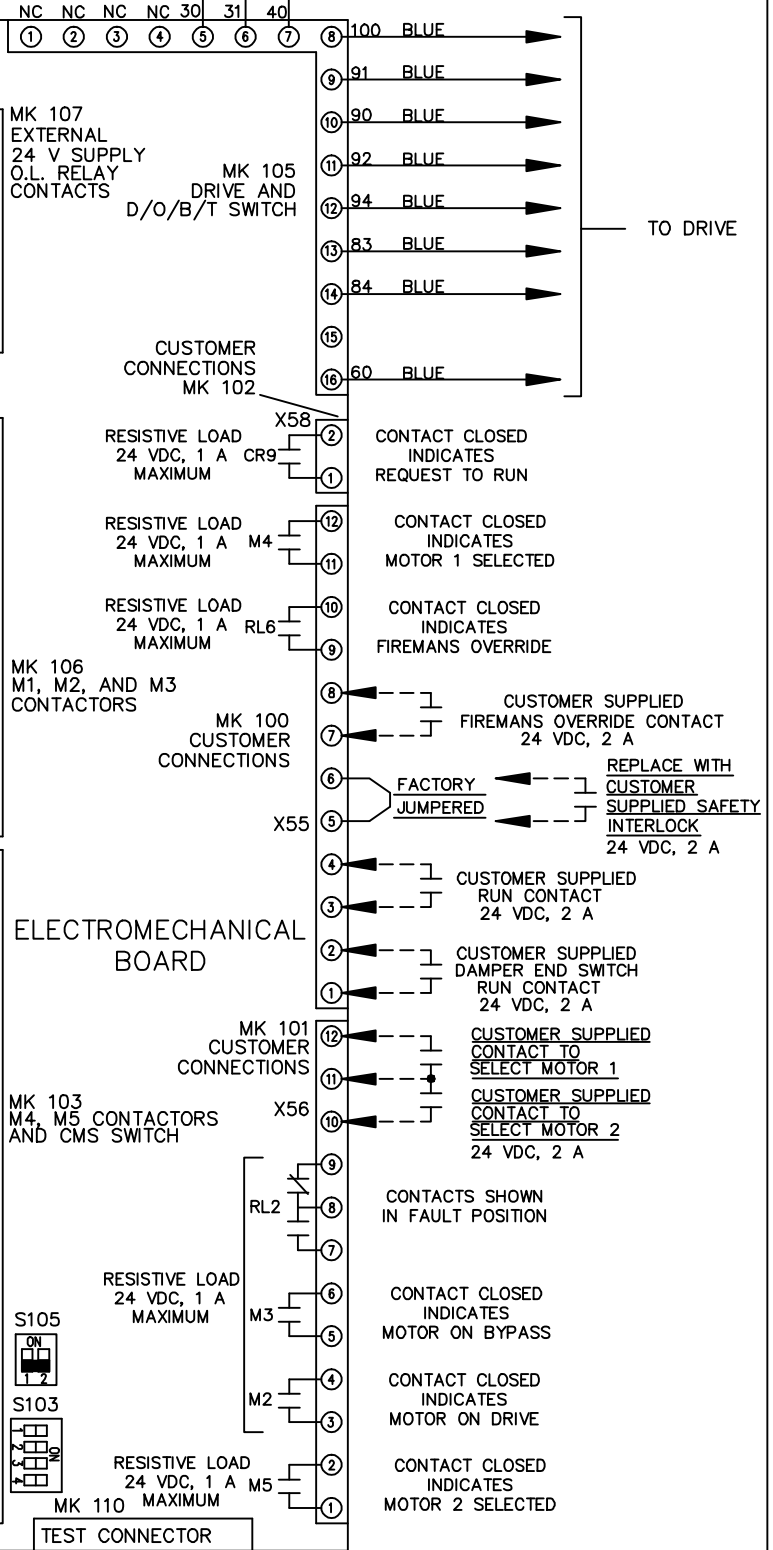
CONTACT SEQUENCE CHART FOR S2  
X INDICATES CONTACT CLOSED

POSITION	CONTACT	MOTOR 1	AUTO	MOTOR 2
11-12		X	X	
13-14				X
21-22			X	
23-24		X		



ONLY # 1 ON 30 SECONDS  
ONLY # 2 ON 60 SEC.  
ONLY # 3 ON 300 SEC  
ALL ON 15 SEC.  
ALL OFF NO AUTO BYPASS (FACTORY DEFAULT)

CUSTOMER CONNECTIONS X55, X56, X58  
CLASS 2 POWER SOURCE  
REQUIRED FOR FIELD CONNECTION  
USE CLASS 1 CONDUCTORS  
CONDUCTOR SIZE 28-14 AWG



ELECTROMECHANICAL BOARD

MK 103  
M4, M5 CONTACTORS  
AND CMS SWITCH

RESISTIVE LOAD  
24 VDC, 1 A  
MAXIMUM

RESISTIVE LOAD  
24 VDC, 1 A  
MAXIMUM

TEST CONNECTOR

CONTACT CLOSED  
INDICATES  
REQUEST TO RUN

CONTACT CLOSED  
INDICATES  
MOTOR 1 SELECTED

CONTACT CLOSED  
INDICATES  
FIREMANS OVERRIDE

CUSTOMER SUPPLIED  
FIREMANS OVERRIDE CONTACT  
24 VDC, 2 A

REPLACE WITH  
CUSTOMER  
SUPPLIED SAFETY  
INTERLOCK  
24 VDC, 2 A

CUSTOMER SUPPLIED  
RUN CONTACT  
24 VDC, 2 A

CUSTOMER SUPPLIED  
DAMPER END SWITCH  
RUN CONTACT  
24 VDC, 2 A

CUSTOMER SUPPLIED  
CONTACT TO  
SELECT MOTOR 1

CUSTOMER SUPPLIED  
CONTACT TO  
SELECT MOTOR 2  
24 VDC, 2 A

CONTACTS SHOWN  
IN FAULT POSITION

CONTACT CLOSED  
INDICATES  
MOTOR ON BYPASS

CONTACT CLOSED  
INDICATES  
MOTOR ON DRIVE

CONTACT CLOSED  
INDICATES  
MOTOR 2 SELECTED

TO DRIVE