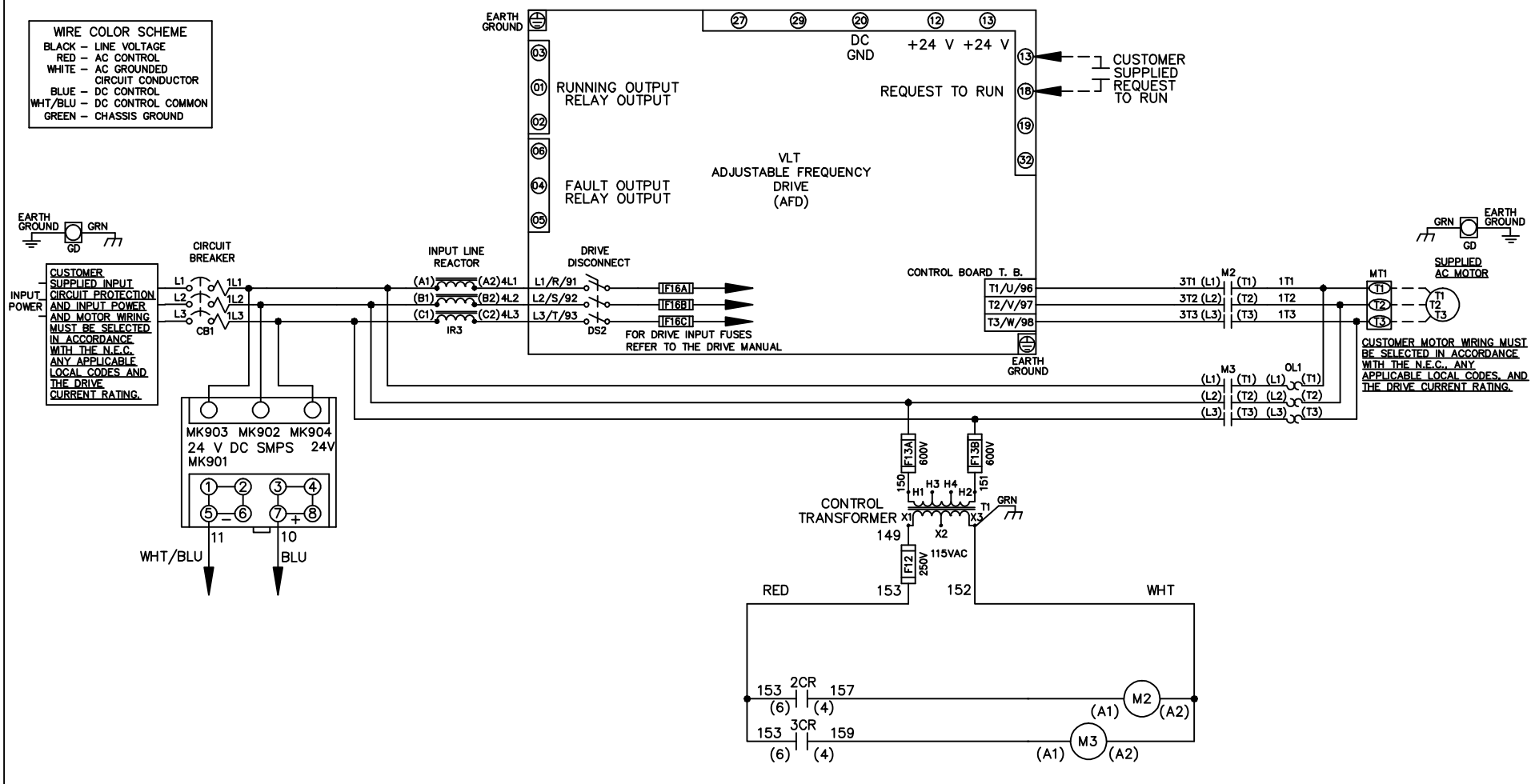


WIRE COLOR SCHEME
 BLACK - LINE VOLTAGE
 RED - AC CONTROL
 WHITE - AC GROUNDED
 CIRCUIT CONDUCTOR
 BLUE - DC CONTROL
 WHT/BLU - DC CONTROL COMMON
 GREEN - CHASSIS GROUND



			- NOTICE -		DRN JNW 2/14/07		NAME 208 VOLT, 2C, CB & DRIVE DISC , DRIVE FUSE, ECB, FRAME C2N1_ , REACTOR, SINGLE MTR		<i>Danfoss</i>	
A	SP08061	10/08	THIS DOCUMENT CONTAINS PROPRIETARY INFORMATION OF DANFOSS DRIVES. IT IS LOANED BY DANFOSS DRIVES SUBJECT TO THE CONDITIONS THAT IT AND THE INFORMATION EMBODIED THEREIN SHALL BE USED ONLY FOR RECORD AND REFERENCE PURPOSES. SHALL NOT BE USED OR CAUSED TO BE USED IN ANY WAY PREJUDICIAL TO THE INTERESTS OF DANFOSS DRIVES, SHALL NOT BE REPRODUCED OR COPIED IN WHOLE OR IN PART, OR DISCLOSED TO ANYONE WITHOUT THE DIRECT WRITTEN PERMISSION OF DANFOSS DRIVES AND SHALL BE RETURNED UPON REQUEST.			APR	MODEL	PAGE 1 OF 2	SIZE A	DWG NO. 174U0987
REV	ECN	DATE								

REV	ECN	DATE
A	SP08066	10/08

NOTICE -
THIS DOCUMENT CONTAINS PROPRIETARY INFORMATION OF DANFOSS DRIVES. IT IS LOANED BY DANFOSS DRIVES SUBJECT TO THE CONDITIONS THAT IT AND THE INFORMATION EMBODIED HEREIN SHALL BE USED ONLY FOR RECORD AND REFERENCE PURPOSES. SHALL NOT BE USED OR COPIED OR BE USED IN ANY MANNER, IN WHOLE OR IN PART, OR DISCLOSED TO ANYONE WITHOUT THE DIRECT WRITTEN PERMISSION OF DANFOSS DRIVES AND SHALL BE RETURNED UPON REQUEST.

DRN JNW
2/14/07
APR

NAME 208 VOLT, 2C, CB & DRIVE DISC
, DRIVE FUSE, ECB, FRAME C2N1
, REACTOR, SINGLE MTR

MODEL
PAGE 2 OF 2
SIZE A
DWG NO. 174U0987



CUSTOMER CONNECTIONS X56, X57, X59
CLASS 2 POWER SOURCE
REQUIRED FOR FIELD CONNECTION
USE CLASS 1 CONDUCTORS
CONDUCTOR SIZE 28-14 AWG



ECB BOARD TB1

① EXTERNAL 24 V SUPPLY
②

CUSTOMER MOTOR RUNNING CONTACT
① 0-24 VDC MAXIMUM 1 AMPS DC RESISTIVE
②

- NC ③
- NC ④ + 24 V
- NC ⑤
- NC ⑥
- NC ⑦ + 24 V
- NC ⑧
- NC ⑨
- NC ⑩ + 24 V
- NC ⑪
- NC ⑫

① SAFETY INTERLOCK
② COM

- ③ CMS MOTOR SELECTED
- ④
- ⑤ O.L. TRIP
- ⑥ M2 STATUS
- ⑦ M3 STATUS
- ⑧ BYPASS MODE ENABLE
- ⑨ BYPASS OVERRIDE
- ⑩ O.L. RESET

① COM
② COM

- NC ③
- NC ④
- ⑤ DRIVE MODE
- ⑥ BYPASS MODE
- ⑦ COM
- ⑧ COM

TEST CONNECTOR MK 110