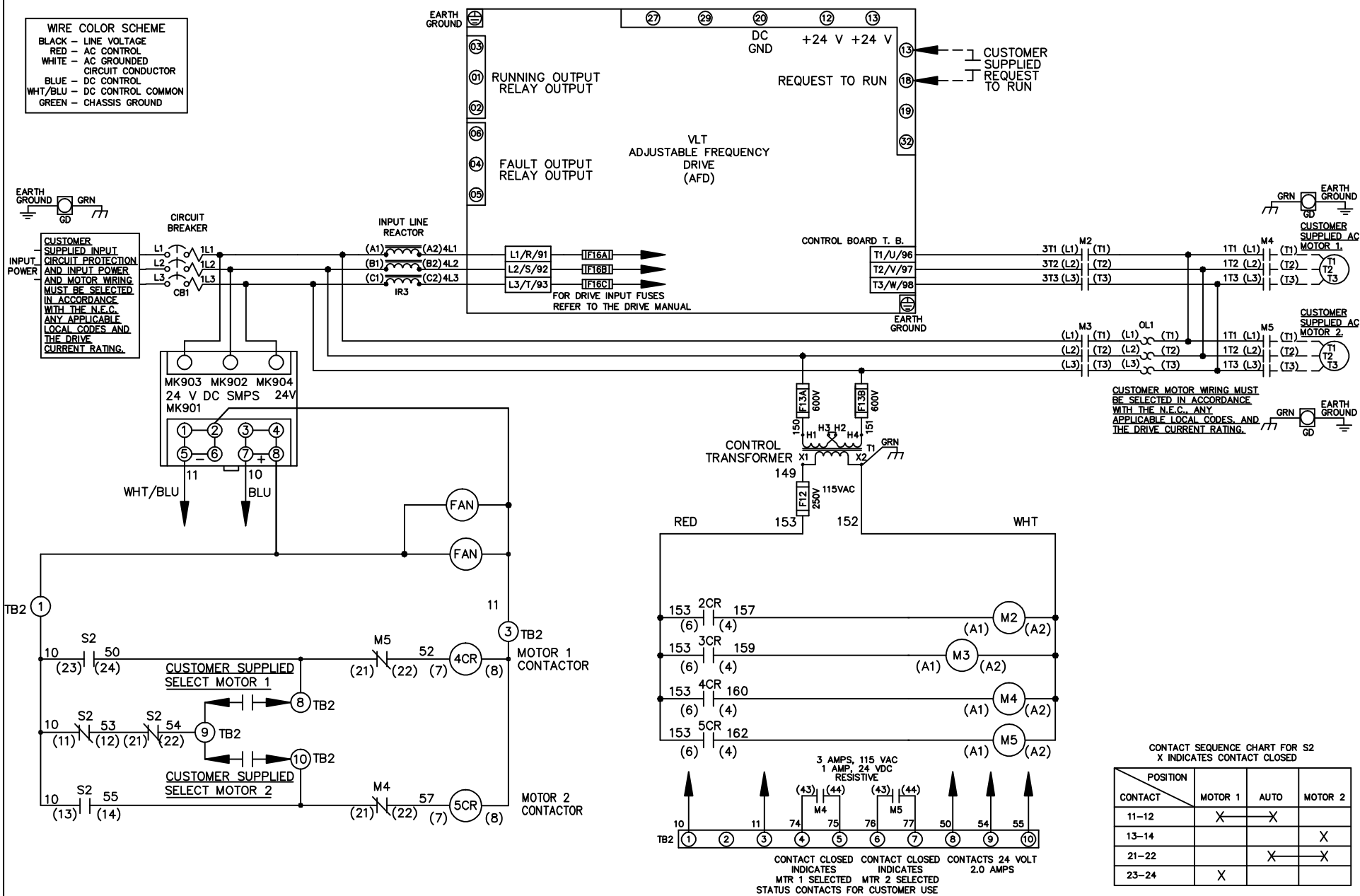


- WIRE COLOR SCHEME**
- BLACK - LINE VOLTAGE
 - RED - AC CONTROL
 - WHITE - AC GROUNDED CIRCUIT CONDUCTOR
 - BLUE - DC CONTROL
 - WHT/BLU - DC CONTROL COMMON
 - GREEN - CHASSIS GROUND



CUSTOMER MOTOR WIRING MUST BE SELECTED IN ACCORDANCE WITH THE N.E.C. ANY APPLICABLE LOCAL CODES, AND THE DRIVE CURRENT RATING.

CONTACT SEQUENCE CHART FOR S2
X INDICATES CONTACT CLOSED

| POSITION | MOTOR 1 | AUTO | MOTOR 2 |
|----------|---------|------|---------|
| 11-12 | X | X | |
| 13-14 | | | X |
| 21-22 | | X | X |
| 23-24 | X | | |

| | | | | | | |
|---|---------|-------|----------------------------|--|------------------|--------|
| <p align="center">- NOTICE -</p> <p>THIS DOCUMENT CONTAINS PROPRIETARY INFORMATION OF DANFOSS DRIVES. IT IS LOANED BY DANFOSS DRIVES SUBJECT TO THE CONDITIONS THAT IT AND THE INFORMATION EMBODIED THEREIN SHALL BE USED ONLY FOR RECORD AND REFERENCE PURPOSES. SHALL NOT BE USED OR CAUSED TO BE USED IN ANY WAY PREJUDICIAL TO THE INTERESTS OF DANFOSS DRIVES, SHALL NOT BE REPRODUCED OR COPIED IN WHOLE OR IN PART, OR DISCLOSED TO ANYONE WITHOUT THE DIRECT WRITTEN PERMISSION OF DANFOSS DRIVES AND SHALL BE RETURNED UPON REQUEST.</p> | | | <p>DRN JNW 2/14/07</p> | <p>NAME 460 VOLT, 2C, CB , DRIVE FUSE, ECB, FRAME C2N12 , REACTOR, CMS</p> | | |
| REV | ECN | DATE | APR | MODEL | PAGE 1 OF 2 | SIZE A |
| A | SP08061 | 10/08 | | | DWG NO. 174U2337 | |

| | | |
|-----|---------|-------|
| REV | ECN | DATE |
| A | SP08066 | 10/08 |

NOTICE -
 THIS DOCUMENT CONTAINS PROPRIETARY INFORMATION OF DANFOSS DRIVES. IT IS LOANED BY DANFOSS DRIVES SUBJECT TO THE CONDITIONS THAT IT AND THE INFORMATION EMBODIED HEREIN SHALL BE USED ONLY FOR RECORD AND REFERENCE PURPOSES. SHALL NOT BE USED OR COPIED, OR BE USED IN ANY MANNER, INCLUDING TO THE INTERESTS OF DANFOSS DRIVES, SHALL NOT BE REPRODUCED OR COPIED IN WHOLE OR IN PART, OR DISCLOSED TO ANYONE WITHOUT THE DIRECT WRITTEN PERMISSION OF DANFOSS DRIVES AND SHALL BE RETURNED UPON REQUEST.

DRN JNW
 2/14/07
 APR

NAME 460 VOLT, 2C, CB
 DRIVE FUSE, ECB, FRAME C2N12
 REACTOR, CMS

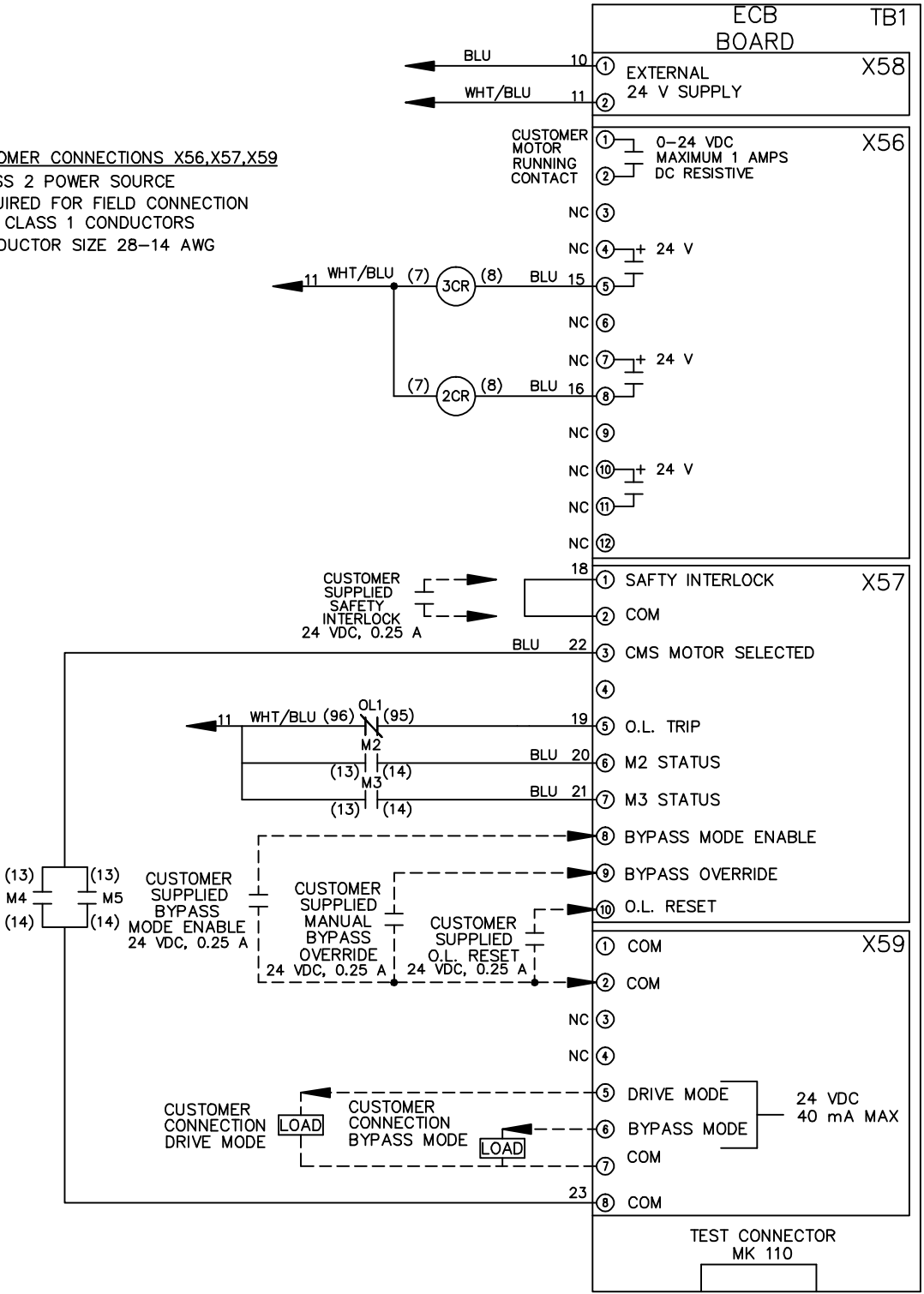
MODEL

SIZE A

PAGE 2 OF 2
 DWG NO. 174U2337



CUSTOMER CONNECTIONS X56, X57, X59
 CLASS 2 POWER SOURCE
 REQUIRED FOR FIELD CONNECTION
 USE CLASS 1 CONDUCTORS
 CONDUCTOR SIZE 28-14 AWG



ECB BOARD TB1

① EXTERNAL 24 V SUPPLY
 ②

CUSTOMER MOTOR RUNNING CONTACT
 ① 0-24 VDC MAXIMUM 1 AMPS DC RESISTIVE
 ②
 NC ③

NC ④ + 24 V
 ⑤
 NC ⑥
 NC ⑦ + 24 V
 ⑧
 NC ⑨
 NC ⑩ + 24 V
 NC ⑪
 NC ⑫

① SAFETY INTERLOCK
 ② COM

③ CMS MOTOR SELECTED
 ④
 ⑤ O.L. TRIP
 ⑥ M2 STATUS
 ⑦ M3 STATUS
 ⑧ BYPASS MODE ENABLE
 ⑨ BYPASS OVERRIDE
 ⑩ O.L. RESET

① COM
 ② COM

NC ③
 NC ④
 ⑤ DRIVE MODE
 ⑥ BYPASS MODE
 ⑦ COM
 ⑧ COM

TEST CONNECTOR MK 110