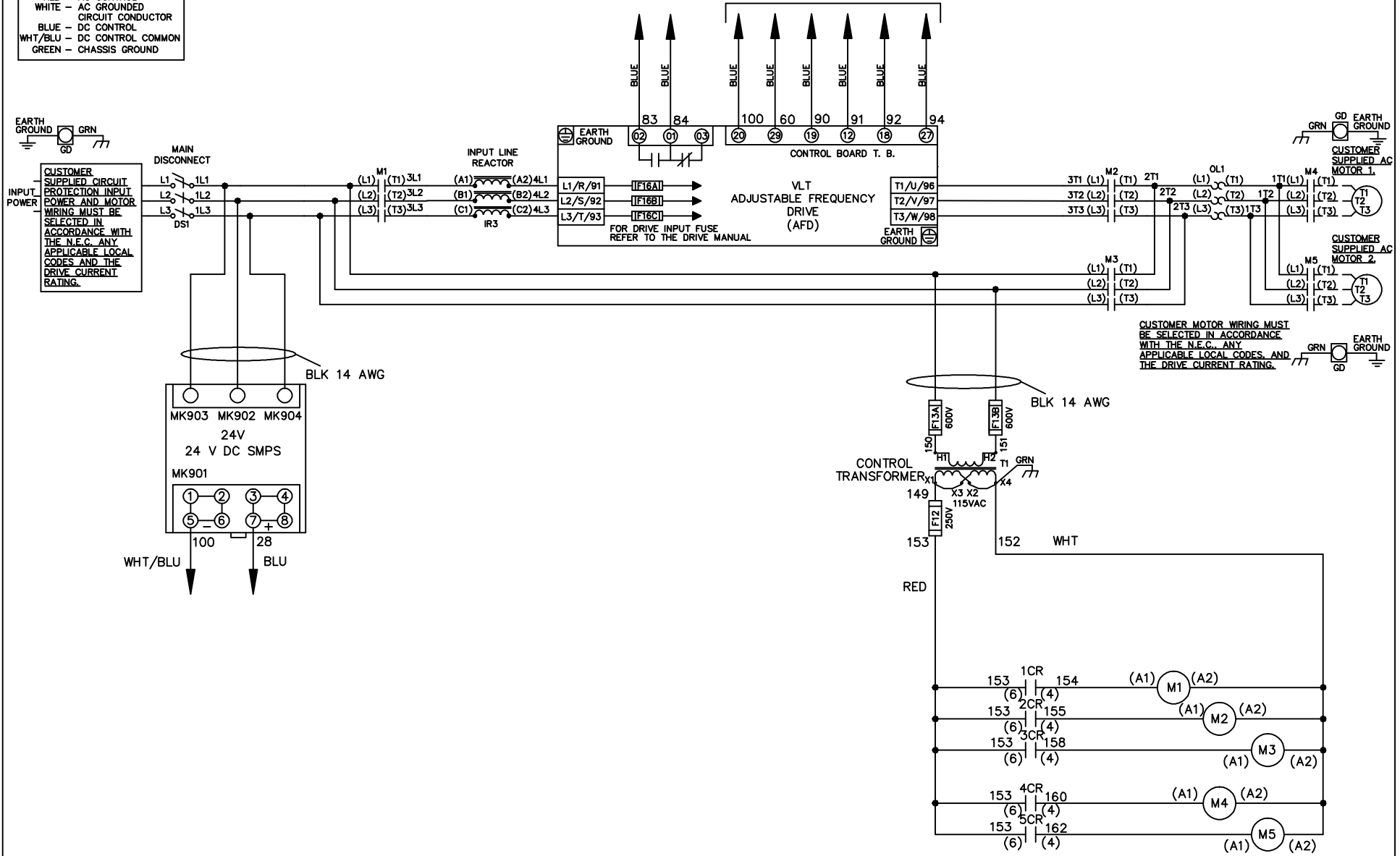


**WIRE COLOR SCHEME**

- BLACK - LINE VOLTAGE
- RED - AC CONTROL
- WHITE - AC GROUNDED
- WHITE - CIRCUIT CONDUCTOR
- BLUE - DC CONTROL
- WHT/BLU - DC CONTROL COMMON
- GREEN - CHASSIS GROUND

\* ALL CONTROL WIRES ARE BLUE EXCEPT WHERE NOTED. TO ELECTROMECHANICAL RELAY BOARD



|   |         |       |                    |   |             |        |                  |
|---|---------|-------|--------------------|---|-------------|--------|------------------|
| - NOTICE -  |         |       | DRN JNW<br>2/14/07 | NAME600 VOLT,3C,MAIN DISC<br>,DRIVE FUSE,EMB2,FRAME C2N1_<br>,REACTOR,CMS |             |        |                  |
| THIS DOCUMENT CONTAINS PROPRIETARY INFORMATION OF DANFOSS DRIVES. IT IS LOANED BY DANFOSS DRIVES SUBJECT TO THE CONDITIONS THAT IT AND THE INFORMATION EMBODIED THEREIN SHALL BE USED ONLY FOR RECORD AND REFERENCE PURPOSES, SHALL NOT BE USED OR CAUSED TO BE USED IN ANY WAY PREJUDICIAL TO THE INTERESTS OF DANFOSS DRIVES, SHALL NOT BE REPRODUCED OR COPIED IN WHOLE OR IN PART, OR DISCLOSED TO ANYONE WITHOUT THE DIRECT WRITTEN PERMISSION OF DANFOSS DRIVES AND SHALL BE RETURNED UPON REQUEST. |         |       |                    |   |             |        |                  |
| A   | SP08061 | 10/08 | APR                | MODEL   | PAGE 1 OF 2 | SIZE A | DWG NO. 174U3870 |

|     |         |       |     |  |        |      |          |
|-----|---------|-------|-----|--|--------|------|----------|
| REV | ECN     | DATE  | DRN | MODEL  | PAGE   | SIZE | DWG      |
| A   | SP08066 | 10/08 | JNW | NAME600 VOLT,3C,MAIN DISC<br>, DRIVE FUSE,EMB2,FRAME C2N1<br>, REACTOR,CMS | 2 OF 2 | A    | 174U3870 |

CONTACT SEQUENCE CHART FOR S1  
X INDICATES CONTACT CLOSED

| CONTACT | POSITION | DRIVE | OFF | BYPASS | TEST |
|---------|----------|-------|-----|--------|------|
| 1-2     |          | X     |     |        |      |
| 3-4     |          |       |     | X      |      |
| 5-6     |          | X     |     |        |      |
| 7-8     |          |       |     |        | X    |

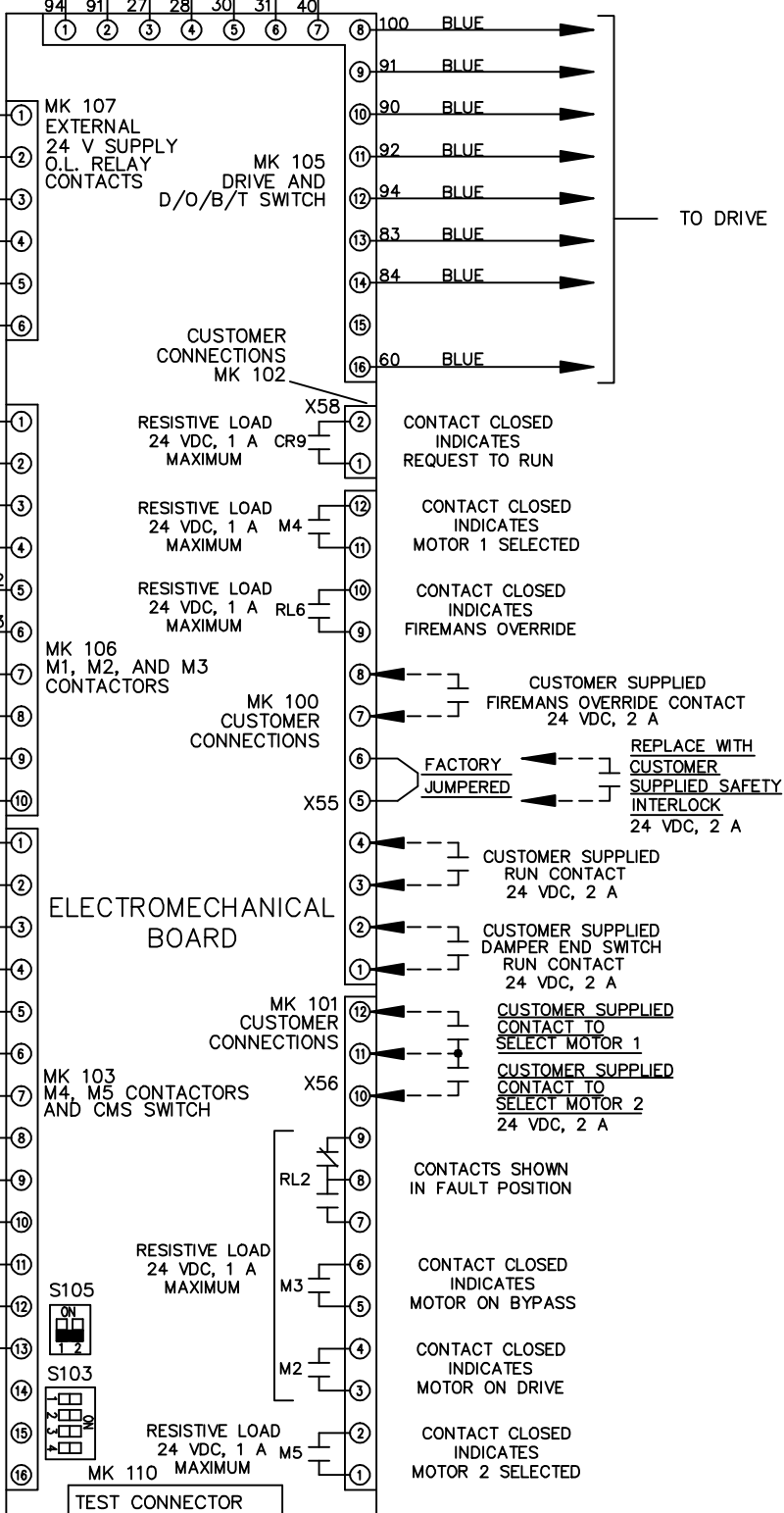


CONTACT SEQUENCE CHART FOR S2  
X INDICATES CONTACT CLOSED

| CONTACT | POSITION | MOTOR 1 | AUTO | MOTOR 2 |
|---------|----------|---------|------|---------|
| 11-12   |          | X       | X    |         |
| 13-14   |          |         |      | X       |
| 21-22   |          | X       |      |         |
| 23-24   |          |         |      | X       |



CUSTOMER CONNECTIONS X55,X56,X58  
CLASS 2 POWER SOURCE  
REQUIRED FOR FIELD CONNECTION  
USE CLASS 1 CONDUCTORS  
CONDUCTOR SIZE 28-14 AWG



NOTICE - THIS DOCUMENT CONTAINS PROPRIETARY INFORMATION OF DANFOSS DRIVES. IT IS LOANED BY DANFOSS DRIVES SUBJECT TO THE CONDITIONS THAT IT AND THE INFORMATION EMBODIED THEREIN SHALL NOT BE USED OR CAUSED TO BE USED IN ANY MANNER REPRODUCIBLE TO THE INTERESTS OF DANFOSS DRIVES. SHALL NOT BE REPRODUCED OR COPIED IN WHOLE OR IN PART, OR DISCLOSED TO ANYONE WITHOUT THE DIRECT WRITTEN PERMISSION OF DANFOSS DRIVES AND SHALL BE RETURNED UPON REQUEST.

APR 2/14/07

NAME600 VOLT,3C,MAIN DISC  
, DRIVE FUSE,EMB2,FRAME C2N1  
, REACTOR,CMS

PAGE 2 OF 2  
SIZE A  
DWG NO. 174U3870

