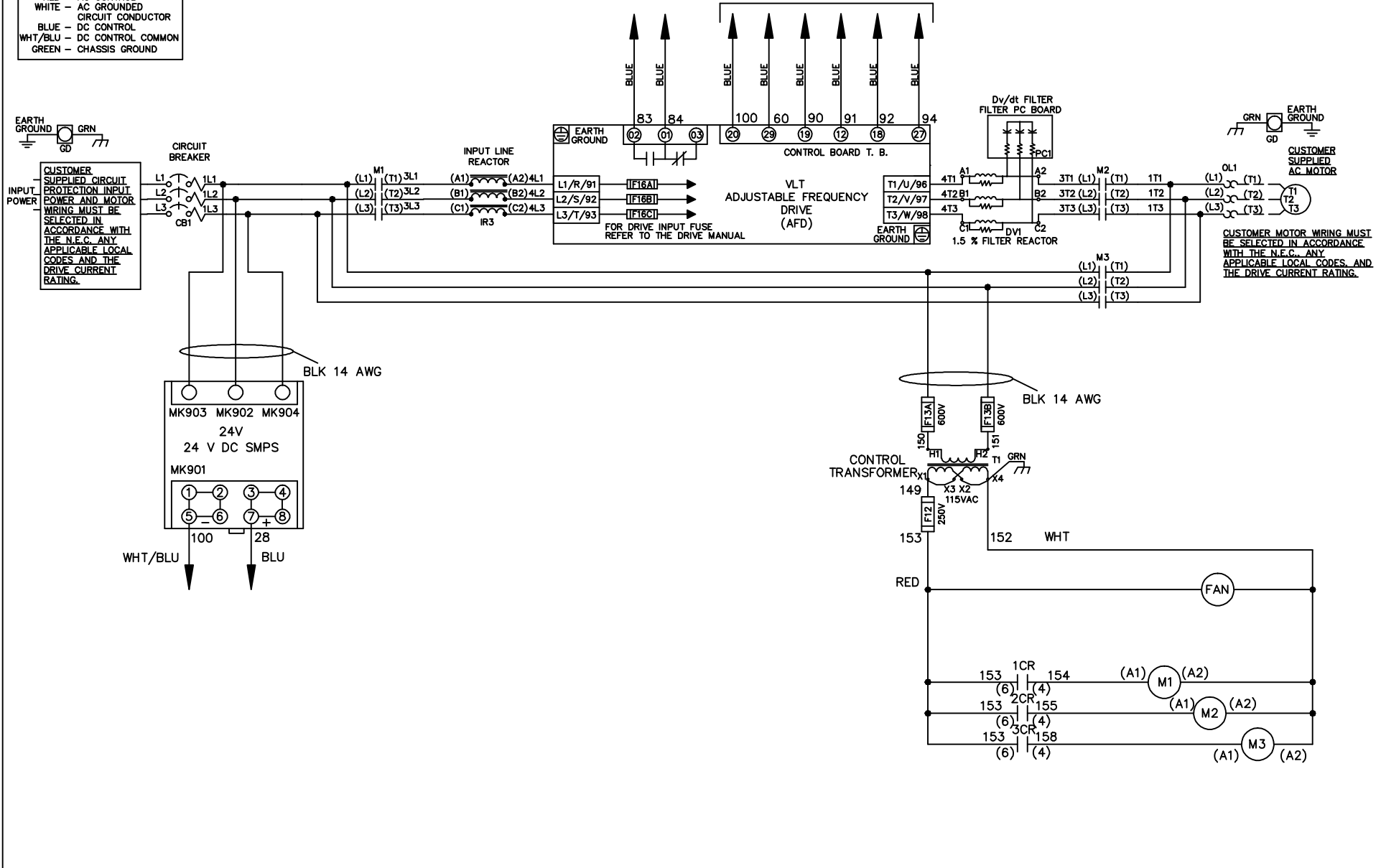


**WIRE COLOR SCHEME**

BLACK	-	LINE VOLTAGE
RED	-	AC CONTROL
WHITE	-	AC GROUNDED
BLUE	-	CIRCUIT CONDUCTOR
BLUE	-	DC CONTROL
WHT/BLU	-	DC CONTROL COMMON
GREEN	-	CHASSIS GROUND

\* ALL CONTROL WIRES ARE BLUE EXCEPT WHERE NOTED. TO ELECTROMECHANICAL RELAY BOARD



- NOTICE -			DRN JNW 2/14/07	NAME 600 VOLT, 3C, CB DRIVE FUSE, EMB2, FRAME D1-D2 REACTOR & DVDT, SINGLE MTR		<i>Danfoss</i>
A	SP08061	10/08	APR	MODEL	PAGE 1 OF 2	
REV	ECN	DATE	THIS DOCUMENT CONTAINS PROPRIETARY INFORMATION OF DANFOSS DRIVES. IT IS LOANED BY DANFOSS DRIVES SUBJECT TO THE CONDITIONS THAT IT AND THE INFORMATION EMBODIED THEREIN SHALL BE USED ONLY FOR RECORD AND REFERENCE PURPOSES, SHALL NOT BE USED OR CAUSED TO BE USED IN ANY WAY PREJUDICIAL TO THE INTERESTS OF DANFOSS DRIVES, SHALL NOT BE REPRODUCED OR COPIED IN WHOLE OR IN PART, OR DISCLOSED TO ANYONE WITHOUT THE DIRECT WRITTEN PERMISSION OF DANFOSS DRIVES AND SHALL BE RETURNED UPON REQUEST.		DWG NO.	174U4370

REV	A	ECN	SP08066	DATE	10/08	<p>NOTICE - THIS DOCUMENT CONTAINS PROPRIETARY INFORMATION OF DANFOSS DRIVES. IT IS LOANED BY DANFOSS DRIVES SUBJECT TO THE CONDITIONS THAT IT AND THE INFORMATION EMBODIED THEREIN SHALL NOT BE USED OR CAUSED TO BE USED IN ANY MANNER PREJUDICIAL TO THE INTERESTS OF DANFOSS DRIVES. SHALL NOT BE REPRODUCED OR COPIED IN WHOLE OR IN PART, OR DISCLOSED TO ANYONE WITHOUT THE DIRECT WRITTEN PERMISSION OF DANFOSS DRIVES AND SHALL BE RETURNED UPON REQUEST.</p>
DRN	JNW	APR	2/14/07	NAME600 VOLT, 3C, CB DRIVE FUSE, EMB2, FRAME D1-D2 REACTOR & DVDT, SINGLE MTR		
MODEL	PAGE 2 OF 2		SIZE	DWG NO.	174U4370	

CONTACT SEQUENCE CHART FOR S1  
X INDICATES CONTACT CLOSED

POSITION	CONTACT	DRIVE	OFF	BYPASS	TEST
1-2	X	X			
3-4			X	X	
5-6	X				
7-8					X

