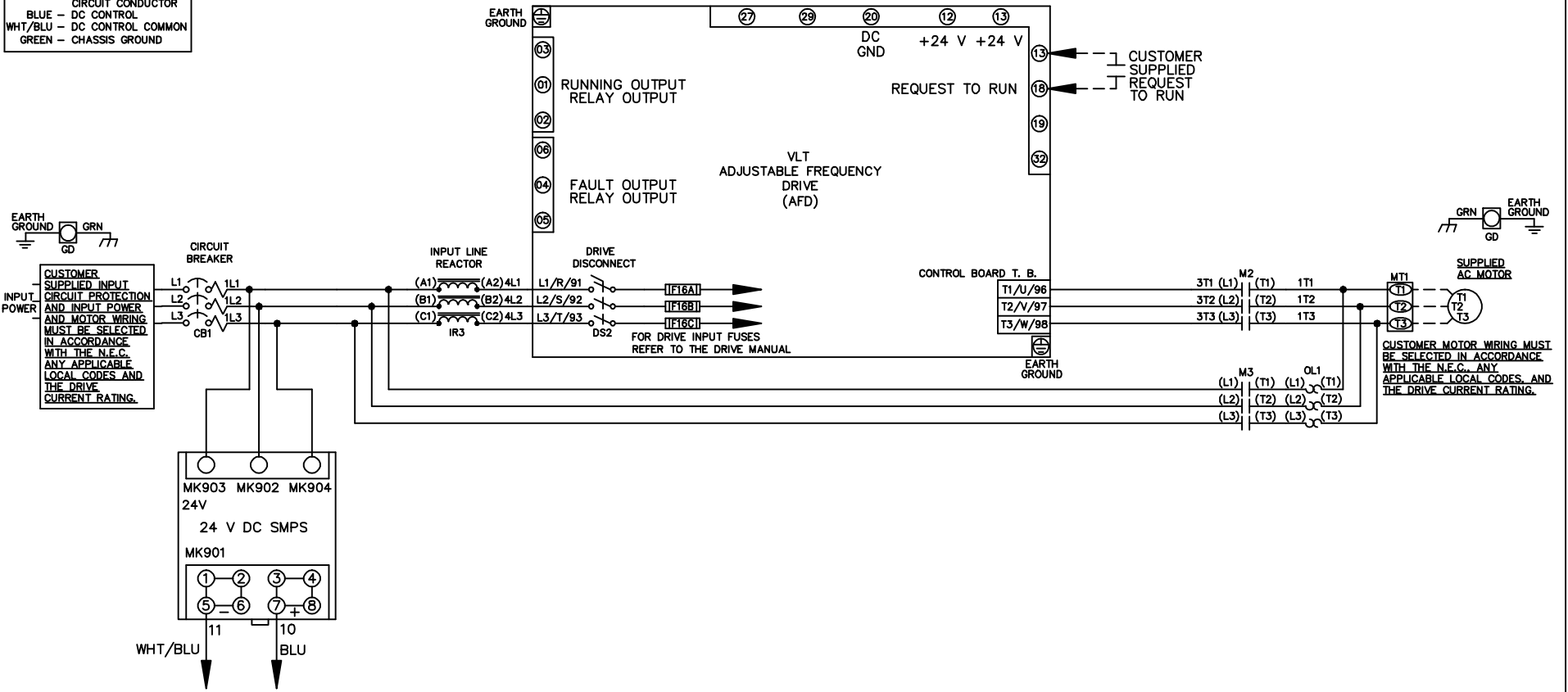


**WIRE COLOR SCHEME**  
 BLACK - LINE VOLTAGE  
 RED - AC CONTROL  
 WHITE - AC GROUNDED  
 CIRCUIT CONDUCTOR  
 BLUE - DC CONTROL  
 WHT/BLU - DC CONTROL COMMON  
 GREEN - CHASSIS GROUND



			-NOTICE-	DRN JNW	NAME 208-600VOLT, 2C, CB & DRIVE DISC		THE TRANE COMPANY	
			THIS DRAWING IS PROPRIETARY AND SHALL NOT BE COPIED OR ITS CONTENTS DISCLOSED TO OUTSIDE PARTIES WITHOUT THE WRITTEN CONSENT OF THE TRANE COMPANY	2/14/07	,DRIVE FUSE, ECB, FRAME A5-B1		A DIVISION OF AMERICAN STANDARD INC.	
A	SP08061	10/08		APR	MODEL	PAGE 1 OF 2	SIZE A	DWG NO. 174U4863
REV	ECN	DATE						

REV	A	ECN	SP08066	DATE	10/08
-----	---	-----	---------	------	-------

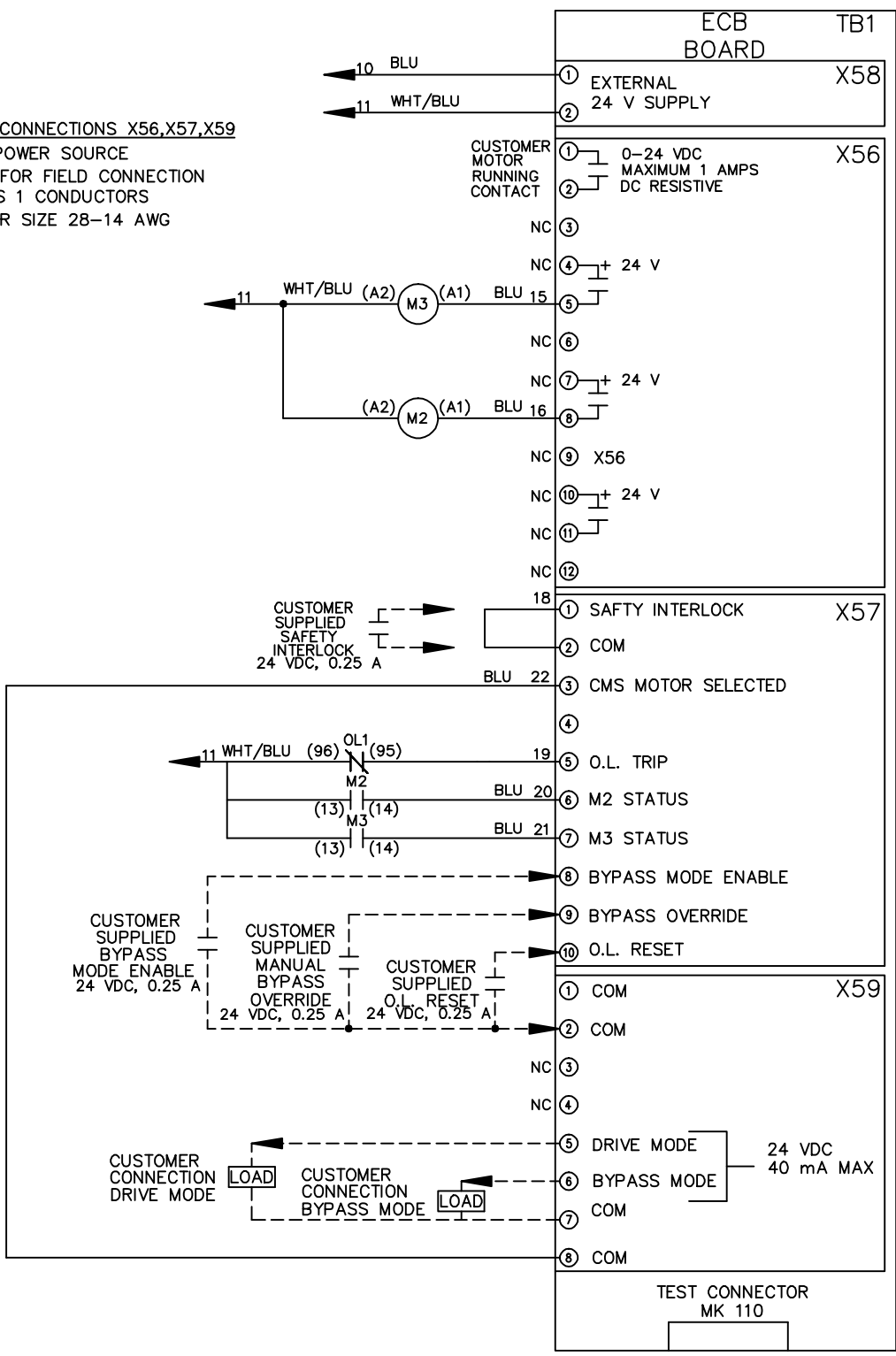
-NOTICE-  
 THIS DRAWING IS PROPRIETARY AND SHALL NOT BE COPIED OR ITS CONTENTS DISCLOSED TO OUTSIDE PARTIES WITHOUT THE WRITTEN CONSENT OF THE TRANE COMPANY

DRN JNW  
 2/14/07  
 APR

NAME 208-600VOLT, 2C,CB & DRIVE DISC  
 , DRIVE FUSE, ECB, FRAME A5-B1  
 , REACTOR, SINGLE MTR  
 MODEL  
 PAGE 2 OF 2  
 SIZE A  
 DWG NO. 174U4863

THE TRANE COMPANY  
 A DIVISION OF  
 AMERICAN STANDARD INC.

**CUSTOMER CONNECTIONS X56,X57,X59**  
 CLASS 2 POWER SOURCE  
 REQUIRED FOR FIELD CONNECTION  
 USE CLASS 1 CONDUCTORS  
 CONDUCTOR SIZE 28-14 AWG



10 BLU

11 WHT/BLU

CUSTOMER SUPPLIED SAFETY INTERLOCK 24 VDC, 0.25 A

11 WHT/BLU (A2)

11 WHT/BLU (96)

CUSTOMER SUPPLIED BYPASS MODE ENABLE 24 VDC, 0.25 A

CUSTOMER SUPPLIED MANUAL BYPASS OVERRIDE 24 VDC, 0.25 A

CUSTOMER SUPPLIED O.L. RESET 24 VDC, 0.25 A

CUSTOMER CONNECTION DRIVE MODE

CUSTOMER CONNECTION BYPASS MODE

24 VDC 40 mA MAX