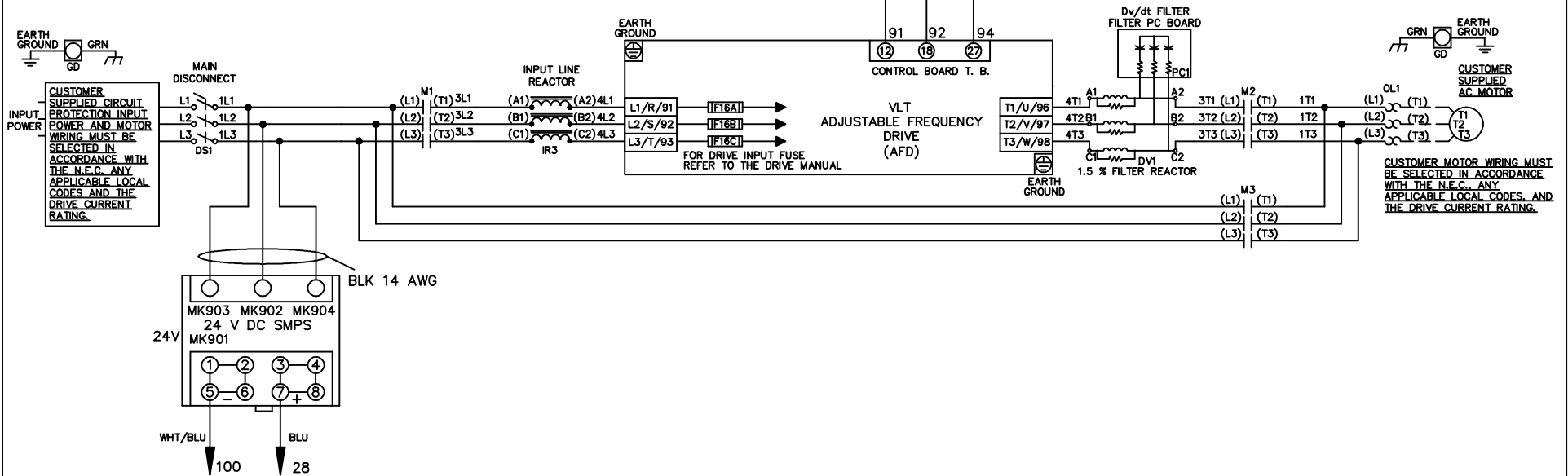


WIRE COLOR SCHEME
 BLACK - LINE VOLTAGE
 RED - AC CONTROL
 WHITE - AC GROUNDED
 WHITE - CIRCUIT CONDUCTOR
 BLUE - DC CONTROL
 WHT/BLU - DC CONTROL COMMON
 GREEN - CHASSIS GROUND

* ALL CONTROL WIRES ARE BLUE EXCEPT WHERE NOTED. TO ELECTROMECHANICAL RELAY BOARD



A	SP08061	10/08
REV	ECN	DATE

-NOTICE-
 THIS DRAWING IS PROPRIETARY AND SHALL NOT BE COPIED OR ITS CONTENTS DISCLOSED TO OUTSIDE PARTIES WITHOUT THE WRITTEN CONSENT OF THE TRANE COMPANY

DRN JNW
 2/14/07
 APR

NAME 208-600VOLT, 3C, MAIN DISC
 ,DRIVE FUSE, EMB1, FRAME B2-C1
 ,REACTOR & DVDT, SINGLE MTR

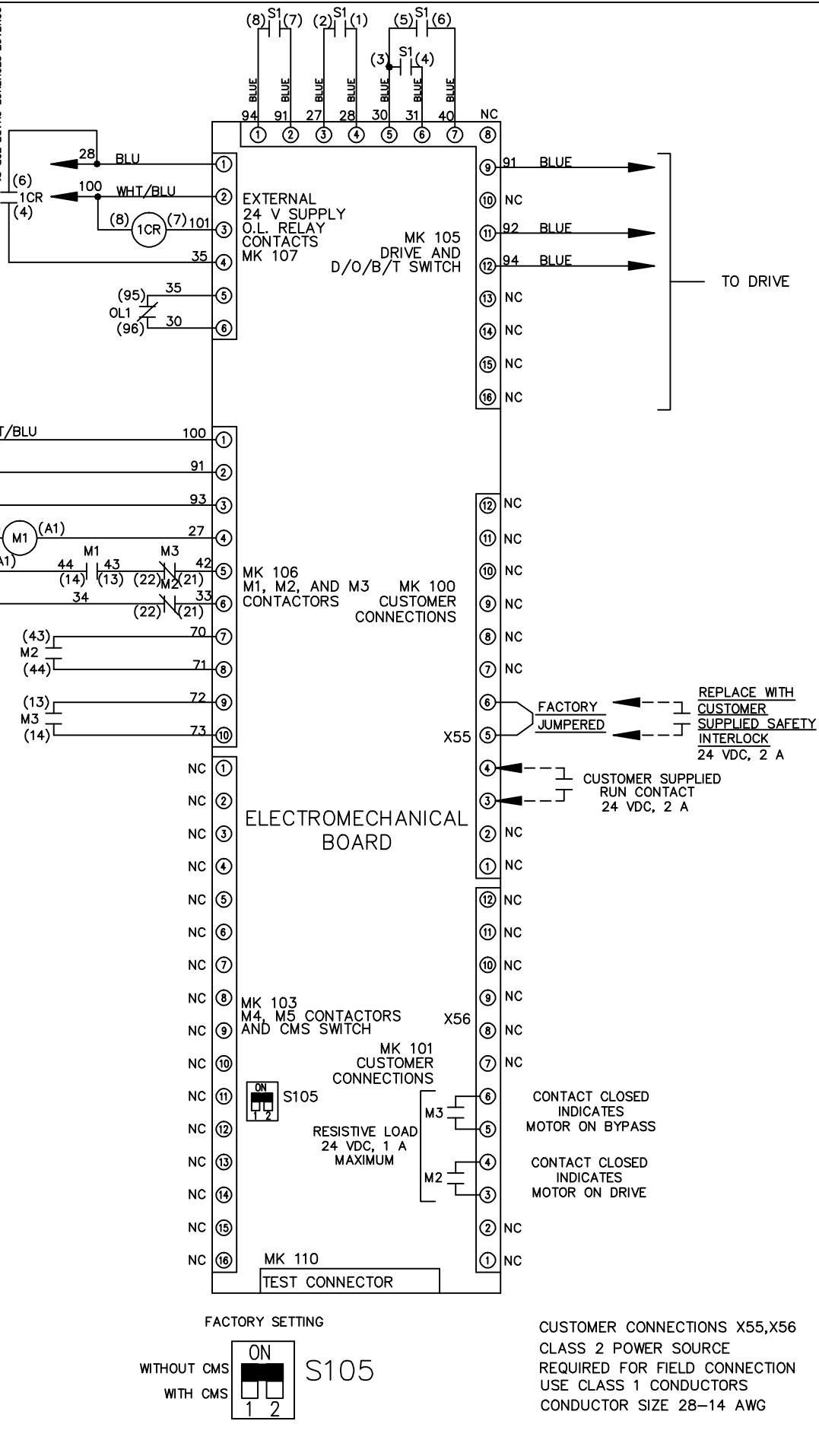
THE TRANE COMPANY
 A DIVISION OF
 AMERICAN STANDARD INC.

MODEL _____ PAGE 1 OF 2 SIZE A DWG NO. 174U5256

REV	ECON	DATE			
A	SP08066	10/08			
THIS DRAWING IS PROPRIETARY AND SHALL NOT BE COPIED OR ITS CONTENTS DISCLOSED TO OUTSIDE PARTIES WITHOUT THE WRITTEN CONSENT OF THE TRANE COMPANY					
			DRN	JNW	
			APR	2/14/07	
			MODEL	NAME 208-600VOLT, 3C, MAIN DISC	
			PAGE	2 OF 2	SIZE A
			DWG NO.	174U5256	
			THE TRANE COMPANY A DIVISION OF AMERICAN STANDARD INC.		

CONTACT	POSITION	DRIVE	OFF	BYPASS	TEST
1-2		X			
3-4				X	X
5-6					X
7-8					X

CONTACT SEQUENCE CHART FOR S1
 X INDICATES CONTACT CLOSED



NOTICE -