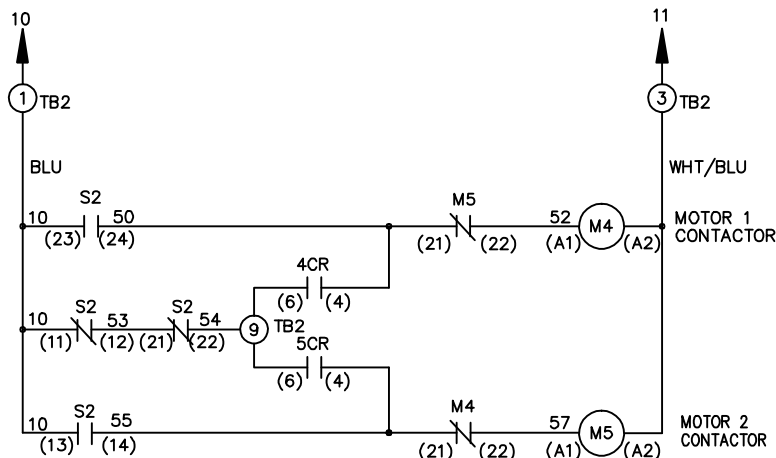
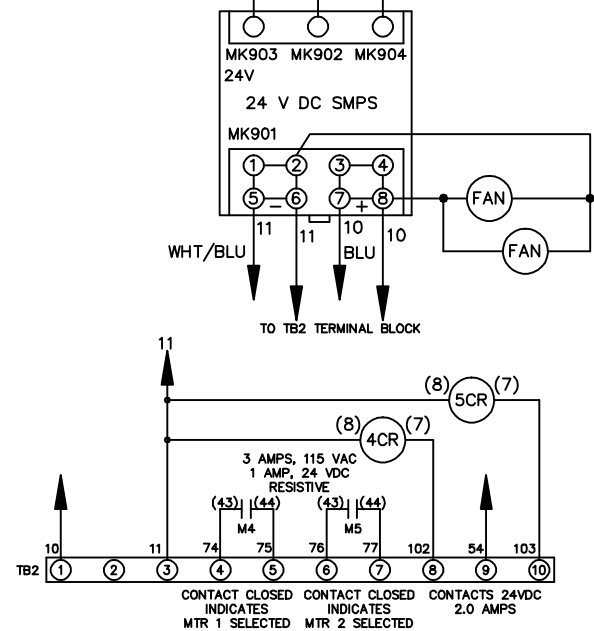
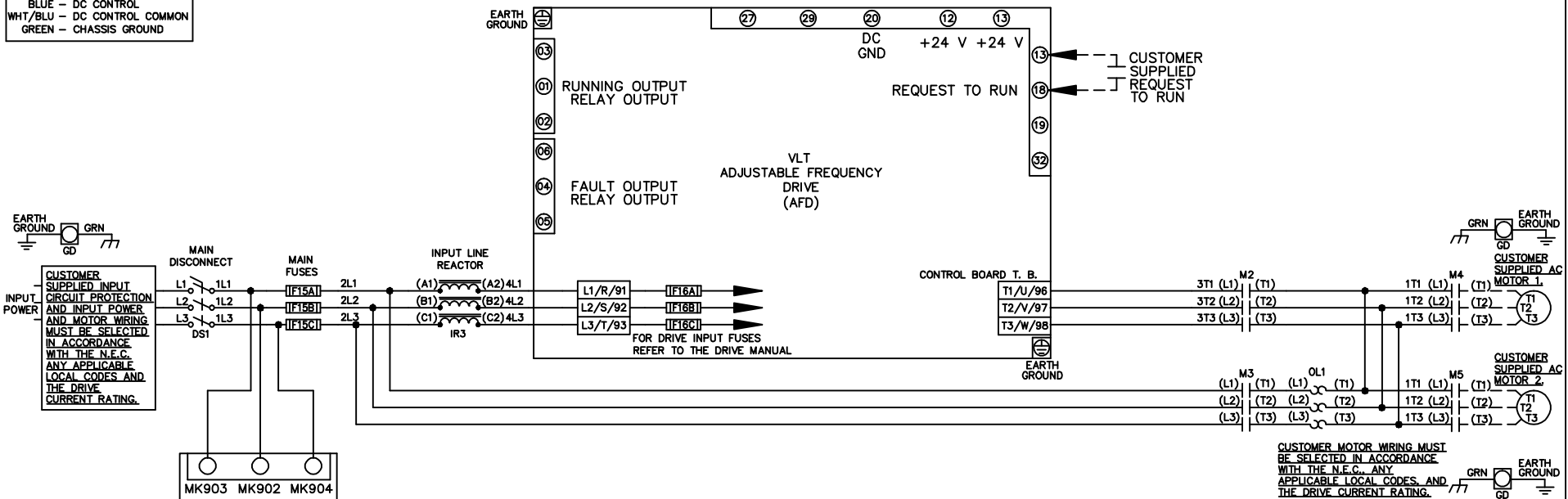


**WIRE COLOR SCHEME**  
 BLACK - LINE VOLTAGE  
 RED - AC CONTROL  
 WHITE - AC GROUNDED  
 CIRCUIT CONDUCTOR  
 BLUE - DC CONTROL  
 WHT/BLU - DC CONTROL COMMON  
 GREEN - CHASSIS GROUND



**CONTACT SEQUENCE CHART FOR S2**  
 X INDICATES CONTACT CLOSED

POSITION	MOTOR 1	AUTO	MOTOR 2
11-12	X	X	
13-14			X
21-22		X	X
23-24	X		

REV	A	ECN	SP08066	DATE	10/08
-----	---	-----	---------	------	-------

-NOTICE-  
 THIS DRAWING IS PROPRIETARY AND SHALL NOT BE COPIED OR ITS CONTENTS DISCLOSED TO OUTSIDE PARTIES WITHOUT THE WRITTEN CONSENT OF THE TRANE COMPANY

DRN JNW  
 2/14/07  
 APR

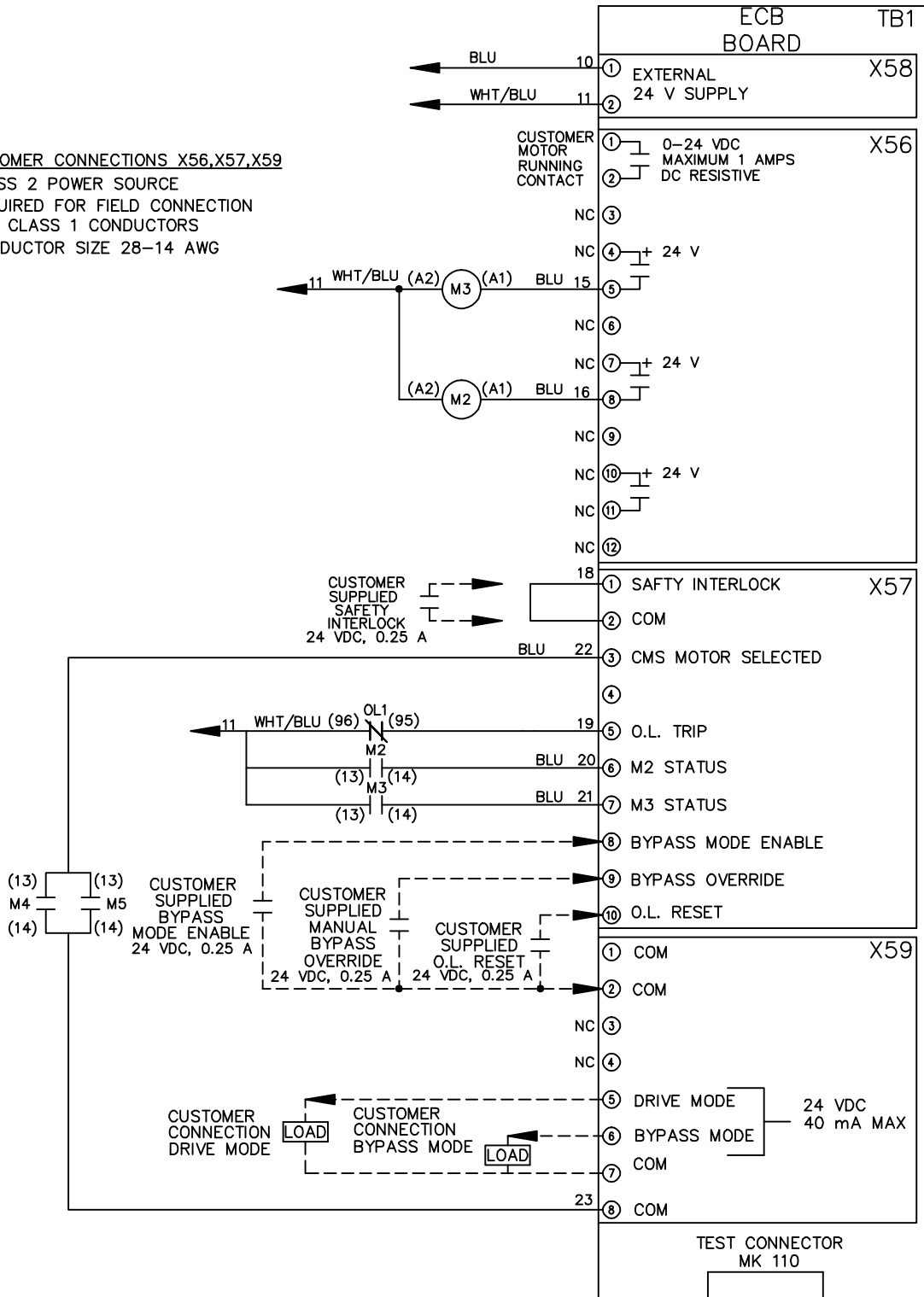
NAME 208-600VOLT,2C,MAIN DISC  
 ,MAIN FUSE,ECB,FRAME C1N12  
 ,REACTOR,CMS  
 MODEL

PAGE 2 OF 2  
 SIZE A  
 DWG NO. 174U5327

THE TRANE COMPANY  
 A DIVISION OF  
 AMERICAN STANDARD INC.

**CUSTOMER CONNECTIONS X56,X57,X59**

CLASS 2 POWER SOURCE  
 REQUIRED FOR FIELD CONNECTION  
 USE CLASS 1 CONDUCTORS  
 CONDUCTOR SIZE 28-14 AWG



**ECB BOARD TB1**

① EXTERNAL  
 ② 24 V SUPPLY

① 0-24 VDC  
 MAXIMUM 1 AMPS  
 DC RESISTIVE

① SAFETY INTERLOCK  
 ② COM

① COM  
 ② COM

⑤ DRIVE MODE  
 ⑥ BYPASS MODE  
 ⑦ COM

TEST CONNECTOR  
 MK 110