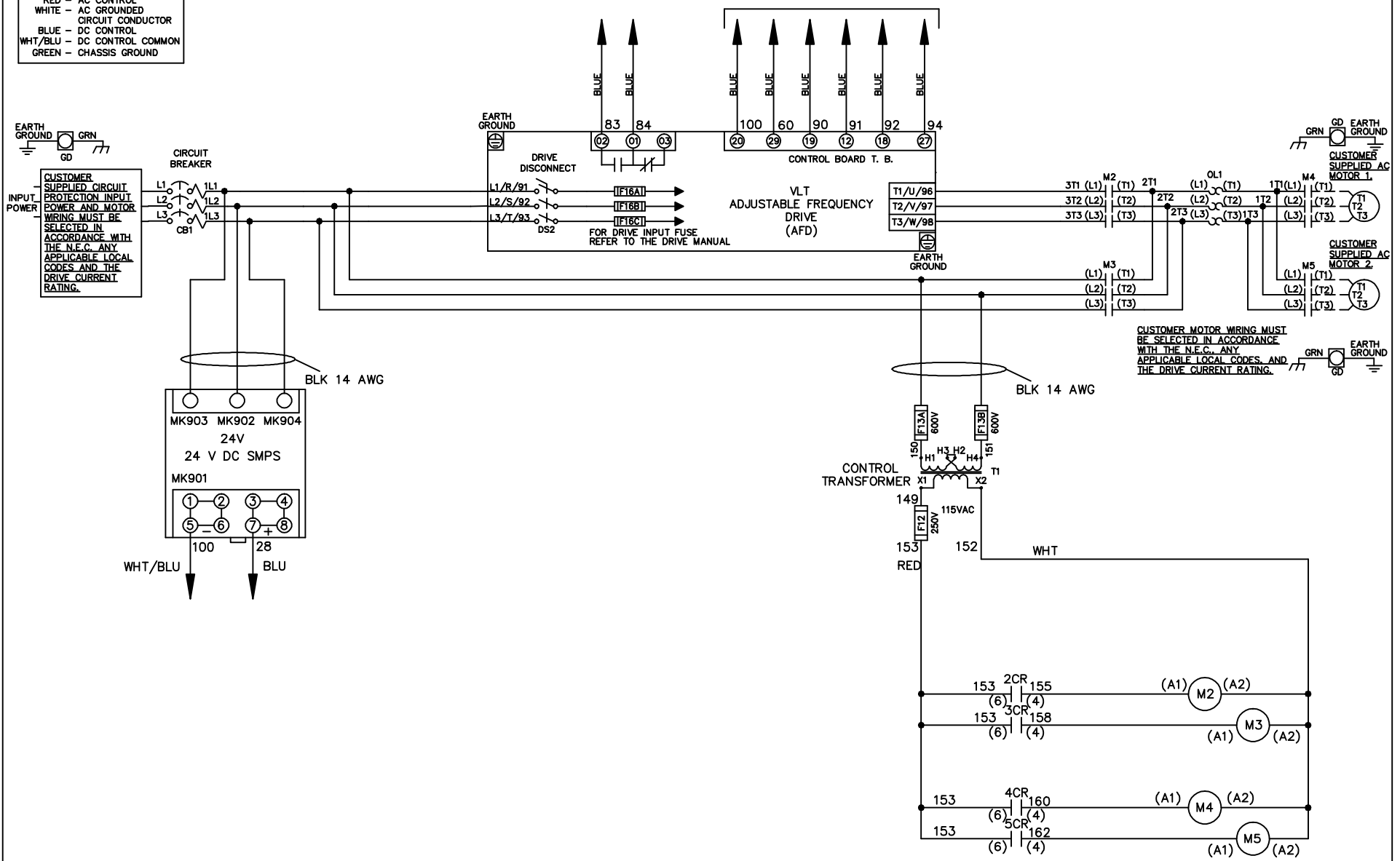


**WIRE COLOR SCHEME**  
 BLACK - LINE VOLTAGE  
 RED - AC CONTROL  
 WHITE - AC GROUND  
 BLUE - DC CONTROL  
 WHT/BLU - DC CONTROL COMMON  
 GREEN - CHASSIS GROUND

\* ALL CONTROL WIRES ARE BLUE EXCEPT WHERE NOTED. TO ELECTROMECHANICAL RELAY BOARD



CUSTOMER MOTOR WIRING MUST BE SELECTED IN ACCORDANCE WITH THE N.E.C. ANY APPLICABLE LOCAL CODES AND THE DRIVE CURRENT RATING.

-NOTICE-

THIS DRAWING IS PROPRIETARY AND SHALL NOT BE COPIED OR ITS CONTENTS DISCLOSED TO OUTSIDE PARTIES WITHOUT THE WRITTEN CONSENT OF THE TRANE COMPANY

DRN JNW  
2/8/07

NAME 460 VOLT, 2C, CB & DRIVE DISC  
 , DRIVE FUSE, EMB2, FRAME C2N1\_  
 , NO REACTOR & DVDT, CMS

THE TRANE COMPANY  
 A DIVISION OF  
 AMERICAN STANDARD INC.

A	SP08061	10/08
REV	ECN	DATE

APR

MODEL

PAGE 1 OF 2

SIZE A

DWG NO.

174U5964

REV	A	ECON	DATE	DRN JNW	APR	MODEL	PAGE 2 OF 2	SIZE A	DWG NO.
	SP08066		10/08	2/14/07					174U5964
THIS DRAWING IS PROPRIETARY AND SHALL NOT BE COPIED OR ITS CONTENTS DISCLOSED TO OUTSIDE PARTIES WITHOUT THE WRITTEN CONSENT OF THE TRANE COMPANY				NAME 460 VOLT, 2C, CB & DRIVE DISC , DRIVE FUSE, EMB2, FRAME C2N1 - , NO REACTOR & DVDI, CMS			THE TRANE COMPANY A DIVISION OF AMERICAN STANDARD INC.		

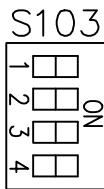
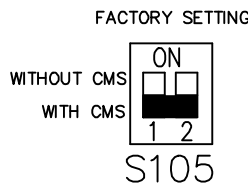
CONTACT SEQUENCE CHART FOR S1  
X INDICATES CONTACT CLOSED

CONTACT	POSITION	DRIVE	OFF	BYPASS
13-14				X
23-24		X		

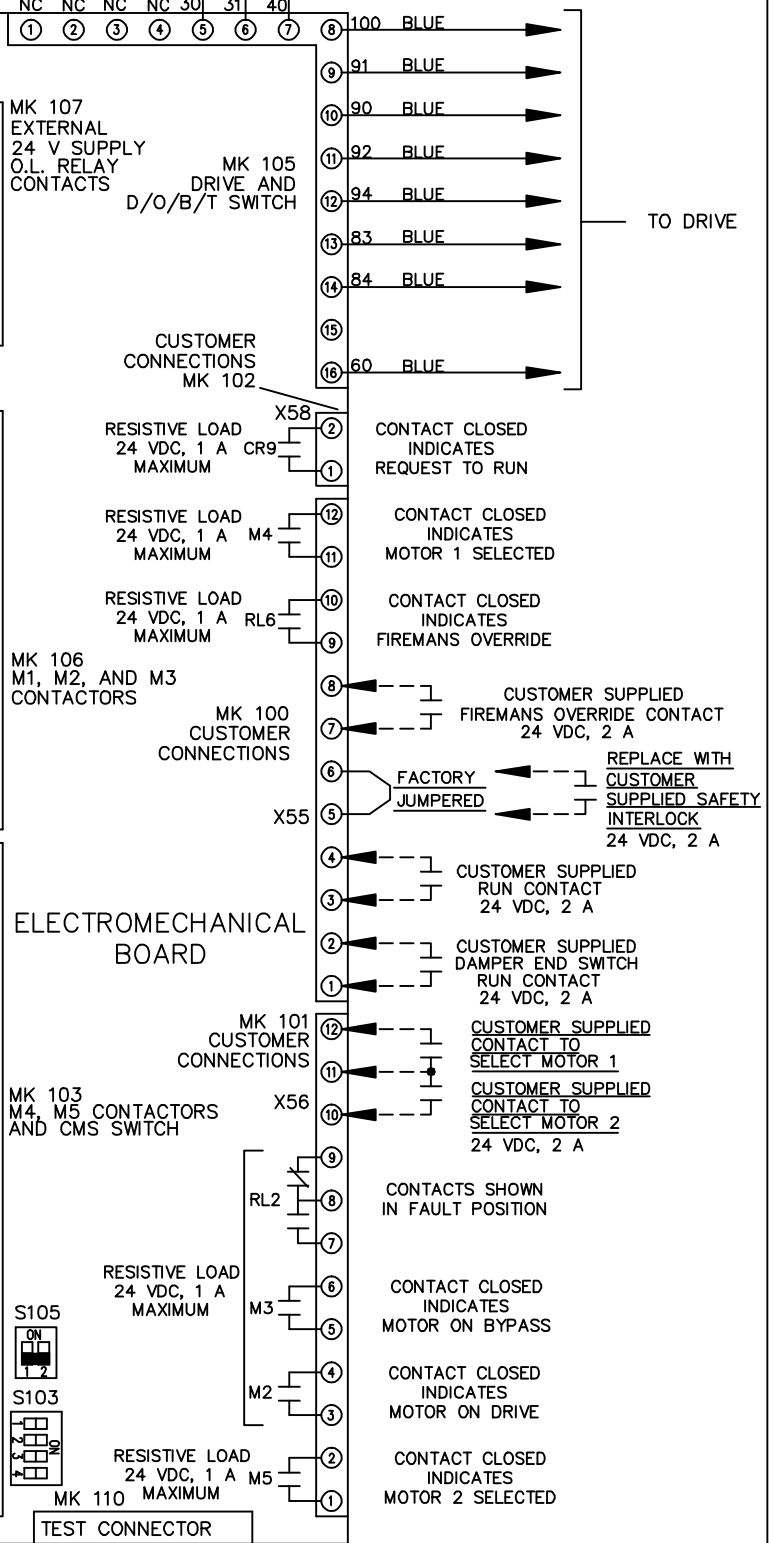


CONTACT SEQUENCE CHART FOR S2  
X INDICATES CONTACT CLOSED

CONTACT	POSITION	MOTOR 1	AUTO	MOTOR 2
11-12		X	X	
13-14				X
21-22			X	
23-24		X		



CUSTOMER CONNECTIONS X55, X56, X58  
 CLASS 2 POWER SOURCE  
 REQUIRED FOR FIELD CONNECTION  
 USE CLASS 1 CONDUCTORS  
 CONDUCTOR SIZE 28-14 AWG



CUSTOMER SUPPLIED  
 FIREMANS OVERRIDE CONTACT  
 24 VDC, 2 A

REPLACE WITH  
 CUSTOMER  
 SUPPLIED SAFETY  
 INTERLOCK  
 24 VDC, 2 A

CUSTOMER SUPPLIED  
 RUN CONTACT  
 24 VDC, 2 A

CUSTOMER SUPPLIED  
 DAMPER END SWITCH  
 RUN CONTACT  
 24 VDC, 2 A

CUSTOMER SUPPLIED  
 CONTACT TO  
 SELECT MOTOR 1

CUSTOMER SUPPLIED  
 CONTACT TO  
 SELECT MOTOR 2  
 24 VDC, 2 A

CONTACTS SHOWN  
 IN FAULT POSITION

CONTACT CLOSED  
 INDICATES  
 MOTOR ON BYPASS

CONTACT CLOSED  
 INDICATES  
 MOTOR ON DRIVE

CONTACT CLOSED  
 INDICATES  
 MOTOR 2 SELECTED

CONTACT CLOSED  
 INDICATES  
 REQUEST TO RUN

CONTACT CLOSED  
 INDICATES  
 MOTOR 1 SELECTED

CONTACT CLOSED  
 INDICATES  
 FIREMANS OVERRIDE

CONTACT CLOSED  
 INDICATES  
 MOTOR ON BYPASS

CONTACT CLOSED  
 INDICATES  
 MOTOR ON DRIVE

CONTACT CLOSED  
 INDICATES  
 MOTOR 2 SELECTED