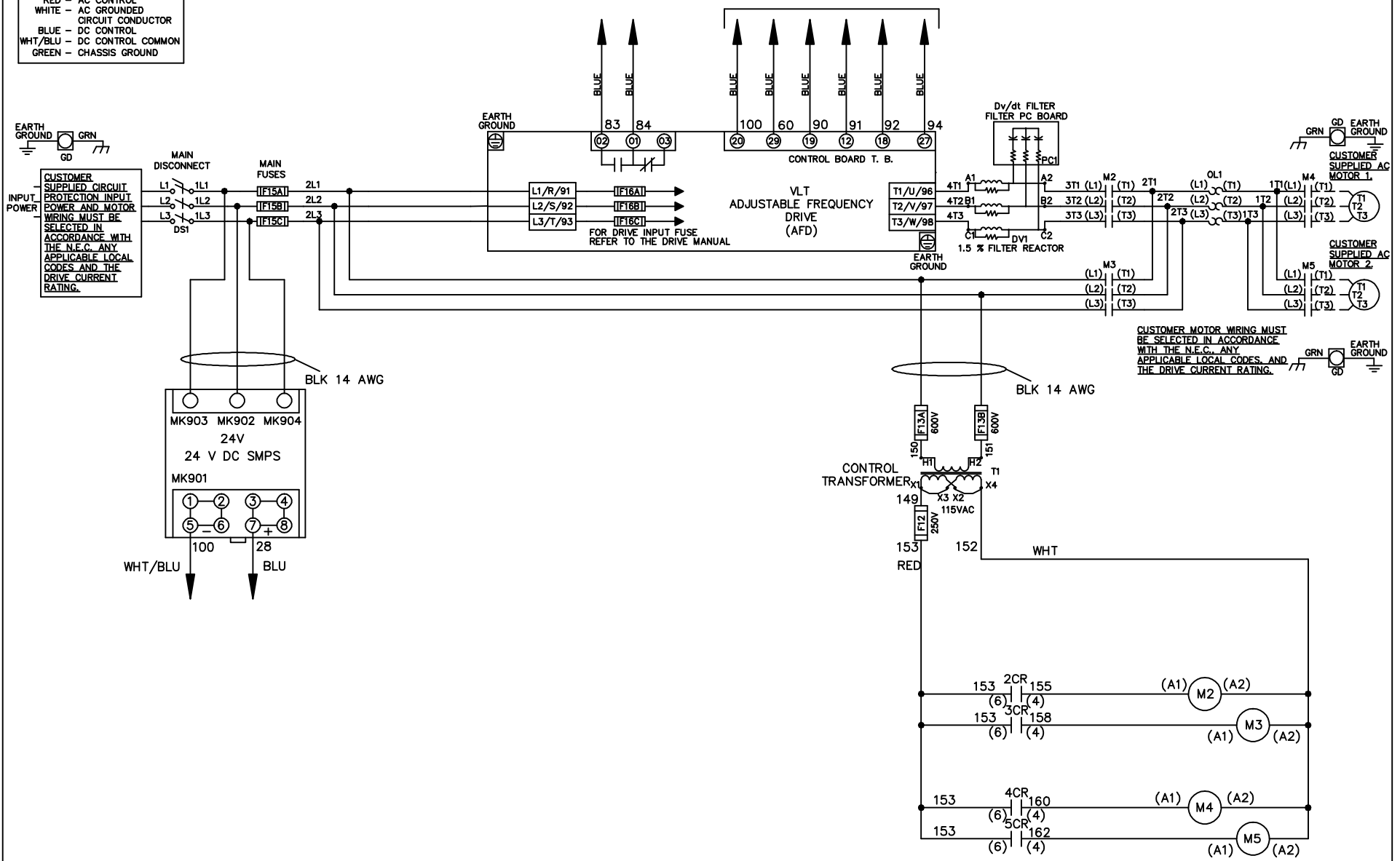


**WIRE COLOR SCHEME**  
 BLACK - LINE VOLTAGE  
 RED - AC CONTROL  
 WHITE - AC GROUNDED  
 CIRCUIT CONDUCTOR  
 BLUE - DC CONTROL  
 WHT/BLU - DC CONTROL COMMON  
 GREEN - CHASSIS GROUND

\* ALL CONTROL WIRES ARE BLUE EXCEPT WHERE NOTED. TO ELECTROMECHANICAL RELAY BOARD



CUSTOMER MOTOR WIRING MUST BE SELECTED IN ACCORDANCE WITH THE N.E.C. ANY APPLICABLE LOCAL CODES AND THE DRIVE CURRENT RATING.

-NOTICE-

THIS DRAWING IS PROPRIETARY AND SHALL NOT BE COPIED OR ITS CONTENTS DISCLOSED TO OUTSIDE PARTIES WITHOUT THE WRITTEN CONSENT OF THE TRANE COMPANY

DRN JNW  
2/8/07

NAME 600 VOLT, 2C, MAIN DISC  
 , MAIN FUSE, EMB2, FRAME C2N1\_  
 , DVDT, CMS

THE TRANE COMPANY  
 A DIVISION OF  
 AMERICAN STANDARD INC.

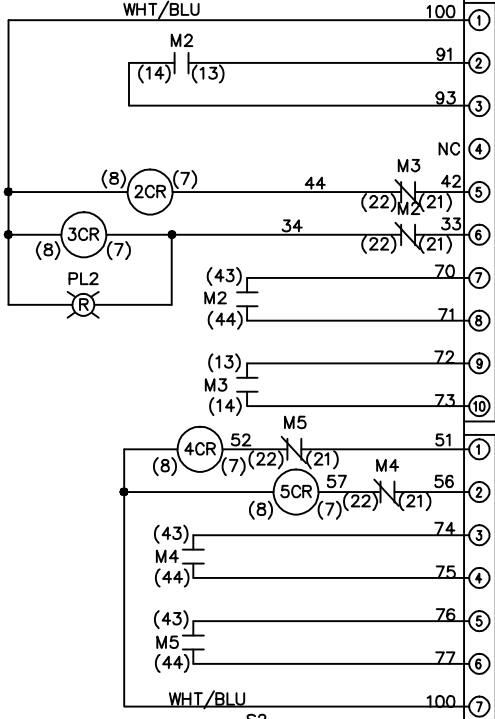
A	SP08061	10/08
REV	ECN	DATE

APR	MODEL	PAGE 1 OF 2	SIZE A	DWG NO. 174U6206
-----	-------	-------------	--------	------------------

REV	A	ECON	DATE	DRN JNW	APR	MODEL	PAGE 2 OF 2	SIZE	DWG NO.
	SP08066		10/08	2/14/07				A	174U6206
				NAME 600 VOLT, 2C, MAIN DISC			THE TRANE COMPANY		
				, MAIN FUSE, EMB2, FRAME C2N1			A DIVISION OF		
				, DVD1, CMS			AMERICAN STANDARD INC.		

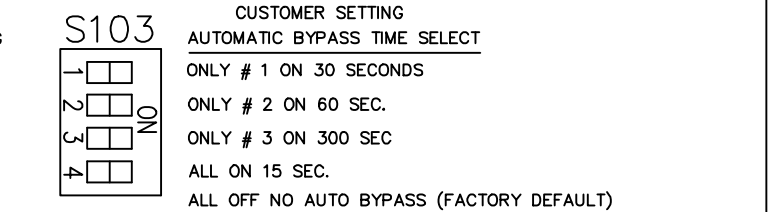
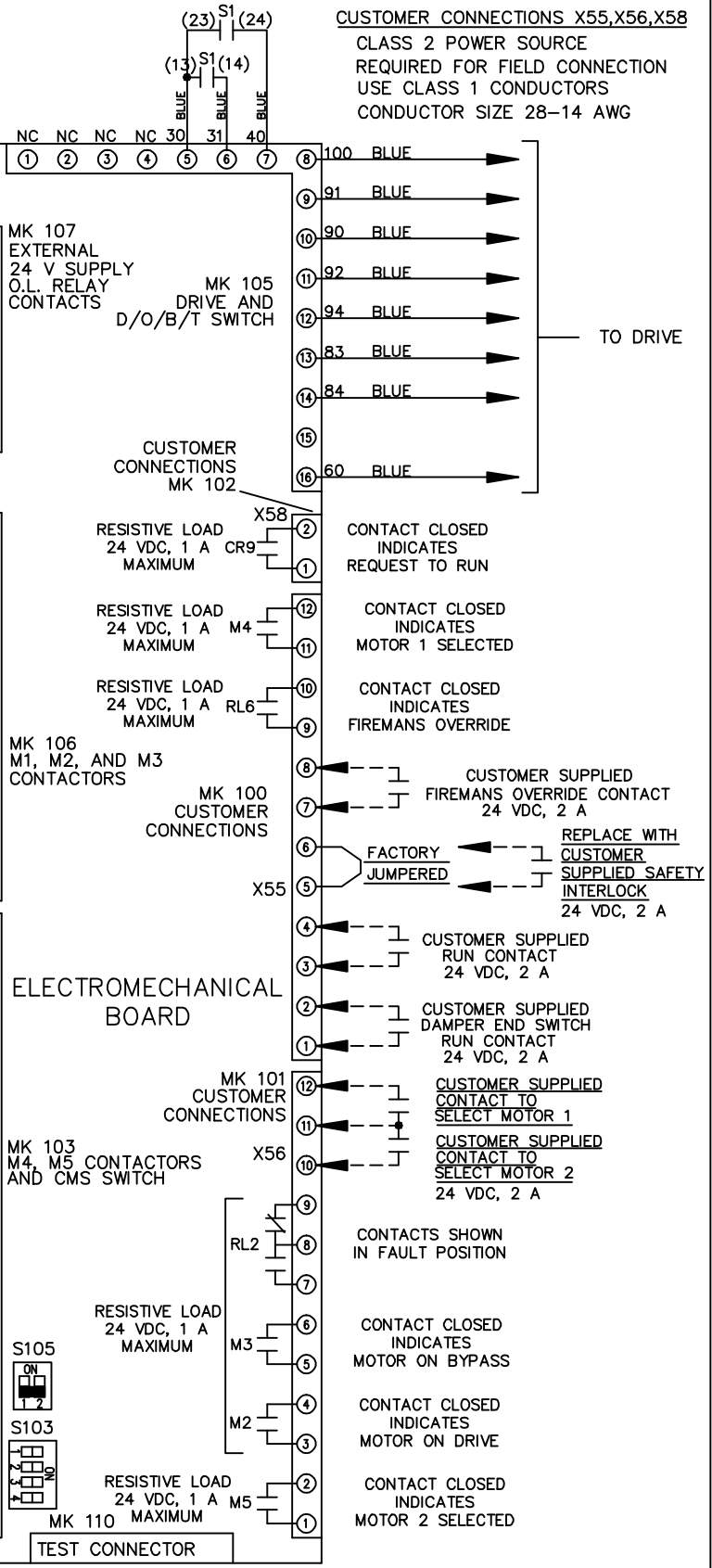
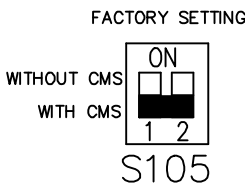
CONTACT SEQUENCE CHART FOR S1  
X INDICATES CONTACT CLOSED

CONTACT	POSITION
13-14	DRIVE
13-14	OFF
23-24	BYPASS
	13-14
	23-24



CONTACT SEQUENCE CHART FOR S2  
X INDICATES CONTACT CLOSED

CONTACT	POSITION
11-12	MOTOR 1
11-12	AUTO
13-14	MOTOR 2
13-14	
21-22	
23-24	



NOTICE—  
THIS DRAWING IS PROPRIETARY AND SHALL NOT BE COPIED OR ITS CONTENTS DISCLOSED TO OUTSIDE PARTIES WITHOUT THE WRITTEN CONSENT OF THE TRANE COMPANY