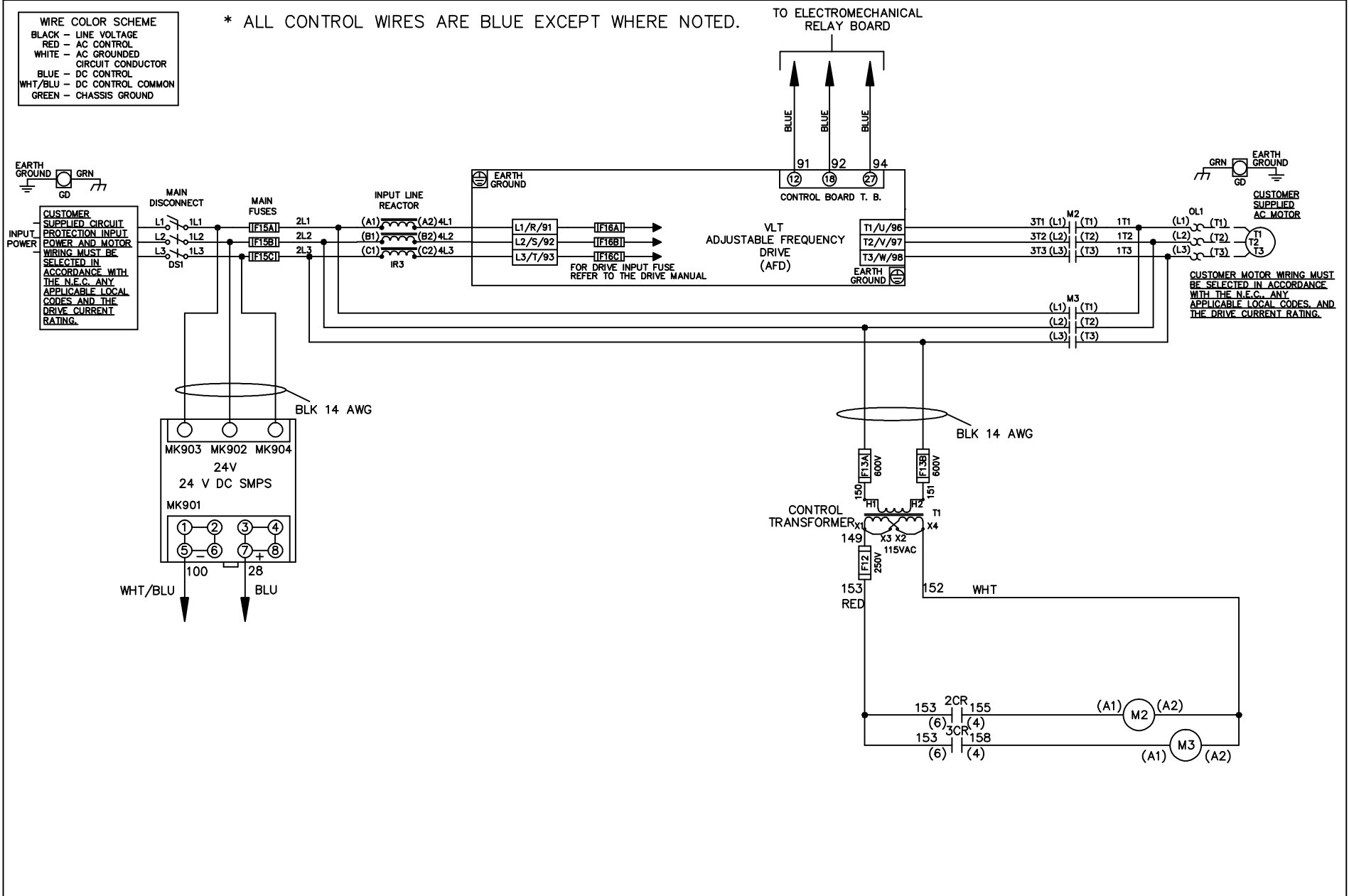


| WIRE COLOR SCHEME |                     |
|-------------------|---------------------|
| BLACK             | - LINE VOLTAGE      |
| RED               | - AC CONTROL        |
| WHITE             | - AC GROUNDED       |
| BLUE              | - DC CONTROL        |
| WHT/BLU           | - DC CONTROL COMMON |
| GREEN             | - CHASSIS GROUND    |

\* ALL CONTROL WIRES ARE BLUE EXCEPT WHERE NOTED.



|     |         |       |  |  |                    |     |   |             |        |  |          |
|-----|---------|-------|--|--|--------------------|-----|---|-------------|--------|--|----------|
|     |         |       | -NOTICE-   |  | DRN JNW<br>2/14/07 |     | NAME600 VOLT,2C,MAIN DISC<br>,MAIN FUSE,EMB1,FRAME C2N1_<br>,REACTOR,SINGLE MTR |             |        | THE TRANE COMPANY<br>A DIVISION OF<br>AMERICAN STANDARD INC. |          |
| A   | SP08061 | 10/08 | THIS DRAWING IS PROPRIETARY AND SHALL NOT<br>BE COPIED OR ITS CONTENTS DISCLOSED TO<br>OUTSIDE PARTIES WITHOUT THE WRITTEN<br>CONSENT OF THE TRANE COMPANY |  |                    | APR | MODEL   | PAGE 1 OF 2 | SIZE A | DWG NO.  | 174U6331 |
| REV | ECN     | DATE  |  |  |                    |     |   |             |        |  |          |

|     |         |       |
|-----|---------|-------|
| REV | ECN     | DATE  |
| A   | SP08066 | 10/08 |

| CONTACT SEQUENCE CHART FOR S1 |       |            |
|-------------------------------|-------|------------|
| X INDICATES CONTACT CLOSED    |       |            |
| POSITION                      | DRIVE | OFF BYPASS |
| 13-14                         |       | X          |
| 23-24                         | X     |            |

-NOTICE-  
 THIS DRAWING IS PROPRIETARY AND SHALL NOT BE COPIED OR ITS CONTENTS DISCLOSED TO OUTSIDE PARTIES WITHOUT THE WRITTEN CONSENT OF THE TRANE COMPANY

DRN JNW  
 2/14/07  
 APR

NAME 600 VOLT, 2C, MAIN DISC  
 , MAIN FUSE, EMB1, FRAME C2N1  
 , REACTOR, SINGLE MTR

MODEL  
 PAGE 2 OF 2  
 SIZE A  
 DWG NO. 174U6331

THE TRANE COMPANY  
 A DIVISION OF  
 AMERICAN STANDARD INC.

