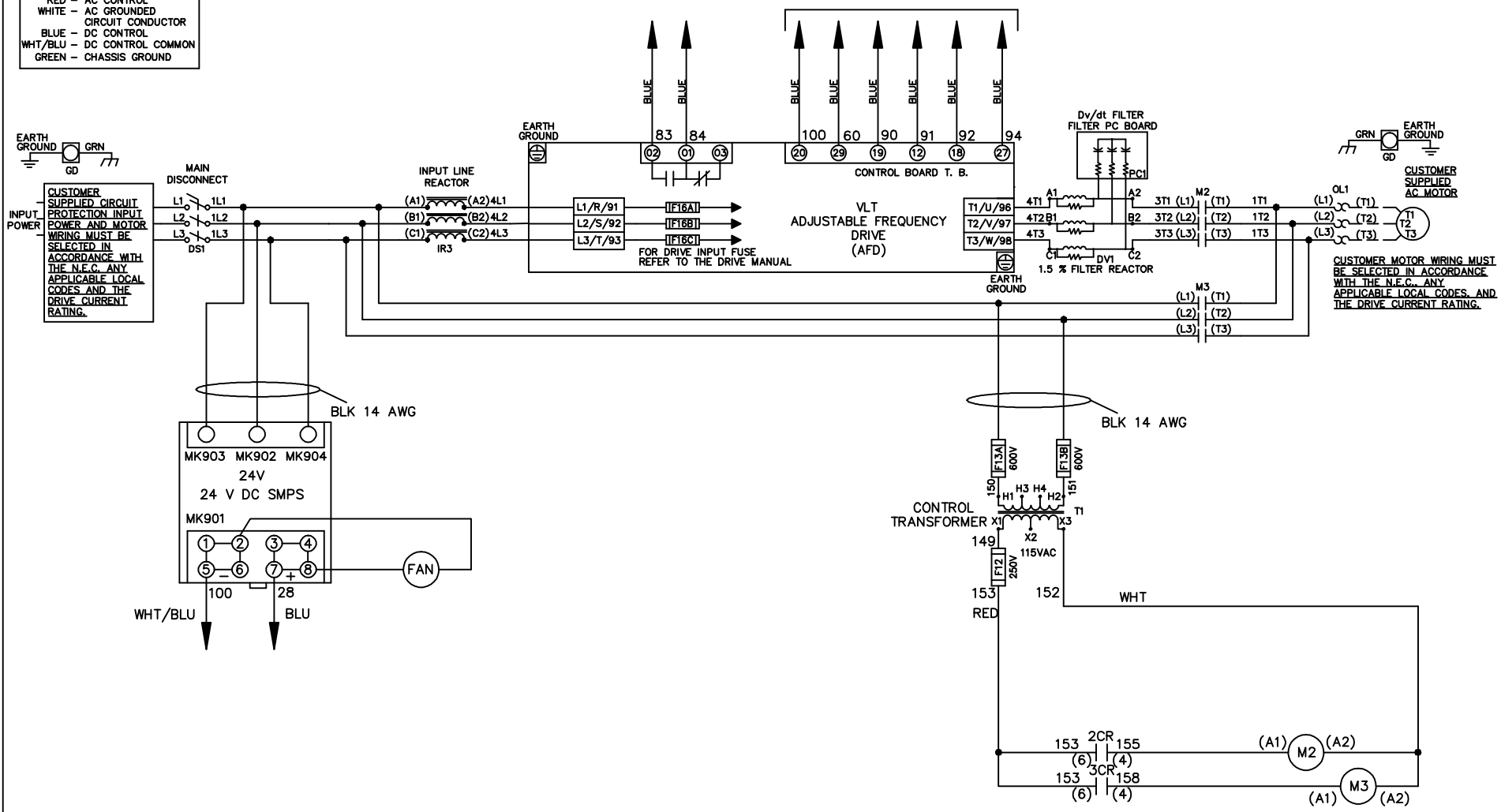


**WIRE COLOR SCHEME**  
 BLACK - LINE VOLTAGE  
 RED - AC CONTROL  
 WHITE - AC GROUNDED  
 CIRCUIT CONDUCTOR  
 BLUE - DC CONTROL  
 WHT/BLU - DC CONTROL COMMON  
 GREEN - CHASSIS GROUND

\* ALL CONTROL WIRES ARE BLUE EXCEPT WHERE NOTED. TO ELECTROMECHANICAL RELAY BOARD



-NOTICE-

THIS DRAWING IS PROPRIETARY AND SHALL NOT BE COPIED OR ITS CONTENTS DISCLOSED TO OUTSIDE PARTIES WITHOUT THE WRITTEN CONSENT OF THE TRANE COMPANY

DRN JNW  
2/8/07

NAME 208 VOLT, 2C, MAIN DISC  
 , DRIVE FUSE, EMB2, FRAME C2N12  
 , REACTOR & DVDT, SINGLE MTR

THE TRANE COMPANY  
 A DIVISION OF  
 AMERICAN STANDARD INC.

|     |         |       |
|-----|---------|-------|
| A   | SP08061 | 10/08 |
| REV | ECN     | DATE  |

APR

MODEL

PAGE 1 OF 2

SIZE A

DWG NO.

174U6485

|     |         |       |   |  |         |   |             |        |          |  |
|-----|---------|-------|---|--|---------|---|-------------|--------|----------|--|
| REV | ECON    | DATE  | -NOTICE-  |  | DRN JNW | MODEL   | PAGE 2 OF 2 | SIZE A | DWG NO.  | THE TRANE COMPANY<br>A DIVISION OF<br>AMERICAN STANDARD INC. |
| A   | SP08066 | 10/08 | THIS DRAWING IS PROPRIETARY AND SHALL NOT BE COPIED OR ITS CONTENTS DISCLOSED TO OUTSIDE PARTIES WITHOUT THE WRITTEN CONSENT OF THE TRANE COMPANY |  | 2/14/07 | NAME 208 VOLT, 2C, MAIN DISC<br>, DRIVE FUSE, EMB2, FRAME C2N12<br>, REACTOR & DVD1, SINGLE MTR |             |        | 174U6485 |  |

| CONTACT SEQUENCE CHART FOR S1<br>X INDICATES CONTACT CLOSED |       |            |
|---|-------|------------|
| POSITION  | DRIVE | OFF BYPASS |
| 13-14   |       | X          |
| 23-24   | X     |            |

