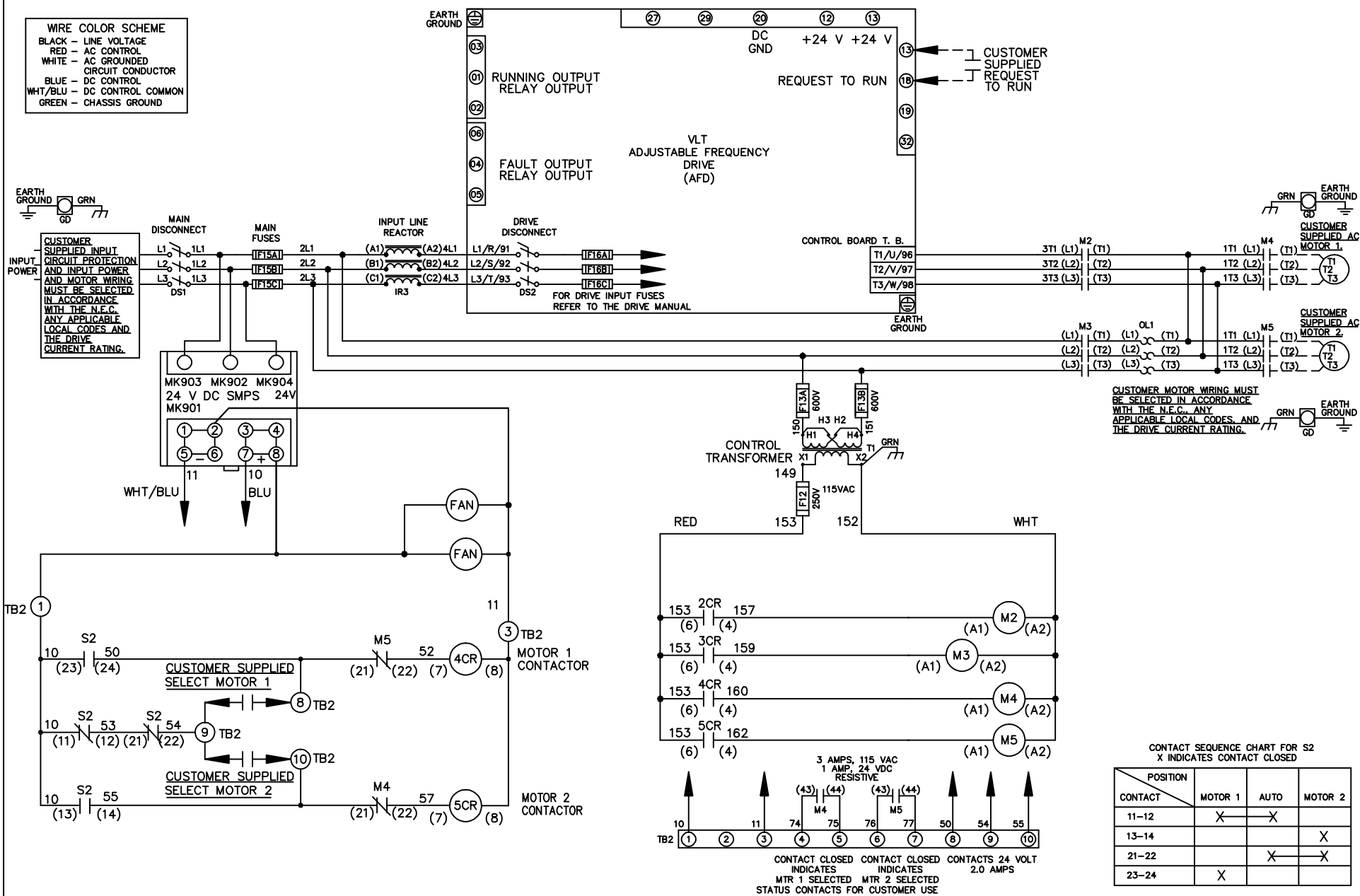
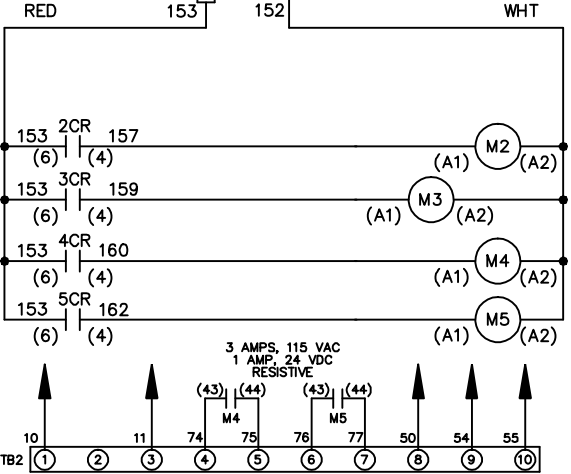


- WIRE COLOR SCHEME**
- BLACK - LINE VOLTAGE
  - RED - AC CONTROL
  - WHITE - AC GROUNDED CIRCUIT CONDUCTOR
  - BLUE - DC CONTROL
  - WHT/BLU - DC CONTROL COMMON
  - GREEN - CHASSIS GROUND



**CUSTOMER SUPPLIED INPUT CIRCUIT PROTECTION AND INPUT POWER AND MOTOR WIRING MUST BE SELECTED IN ACCORDANCE WITH THE N.E.C. ANY APPLICABLE LOCAL CODES AND THE DRIVE CURRENT RATING.**

**CUSTOMER MOTOR WIRING MUST BE SELECTED IN ACCORDANCE WITH THE N.E.C. ANY APPLICABLE LOCAL CODES, AND THE DRIVE CURRENT RATING.**



**CONTACT SEQUENCE CHART FOR S2  
X INDICATES CONTACT CLOSED**

| POSITION | MOTOR 1 | AUTO | MOTOR 2 |
|----------|---------|------|---------|
| 11-12    | X       | X    |         |
| 13-14    |         |      | X       |
| 21-22    |         | X    | X       |
| 23-24    | X       |      |         |

**-NOTICE-**

THIS DRAWING IS PROPRIETARY AND SHALL NOT BE COPIED OR ITS CONTENTS DISCLOSED TO OUTSIDE PARTIES WITHOUT THE WRITTEN CONSENT OF THE TRANE COMPANY

|                           |   |  |
|---------------------------|---|--|
| DRN JNW<br>2/14/07        | NAME 230 VOLT, 2C, MAIN & DRIVE DISC<br>, MAIN FUSE, ECB, FRAME C2N12<br>, REACTOR, CMS | THE TRANE COMPANY<br>A DIVISION OF<br>AMERICAN STANDARD INC. |
| APR                       | MODEL   | SIZE A   |
| REV A<br>SP08061<br>10/08 | PAGE 1 OF 2   | DWG NO. 174U6601   |
| REV                       | ECN   | DATE   |

|     |         |       |
|-----|---------|-------|
| REV | ECN     | DATE  |
| A   | SP08066 | 10/08 |

-NOTICE-  
THIS DRAWING IS PROPRIETARY AND SHALL NOT BE COPIED OR ITS CONTENTS DISCLOSED TO OUTSIDE PARTIES WITHOUT THE WRITTEN CONSENT OF THE TRANE COMPANY

DRN JNW  
2/14/07  
APR

NAME 230 VOLT, 2C, MAIN&DRIVE DISC  
, MAIN FUSE, ECB, FRAME C2N12  
, REACTOR, CMS

MODEL

PAGE 2 OF 2

SIZE A

DWG NO. 174U6601

THE TRANE COMPANY  
A DIVISION OF  
AMERICAN STANDARD INC.

CUSTOMER CONNECTIONS X56, X57, X59  
CLASS 2 POWER SOURCE  
REQUIRED FOR FIELD CONNECTION  
USE CLASS 1 CONDUCTORS  
CONDUCTOR SIZE 28-14 AWG

