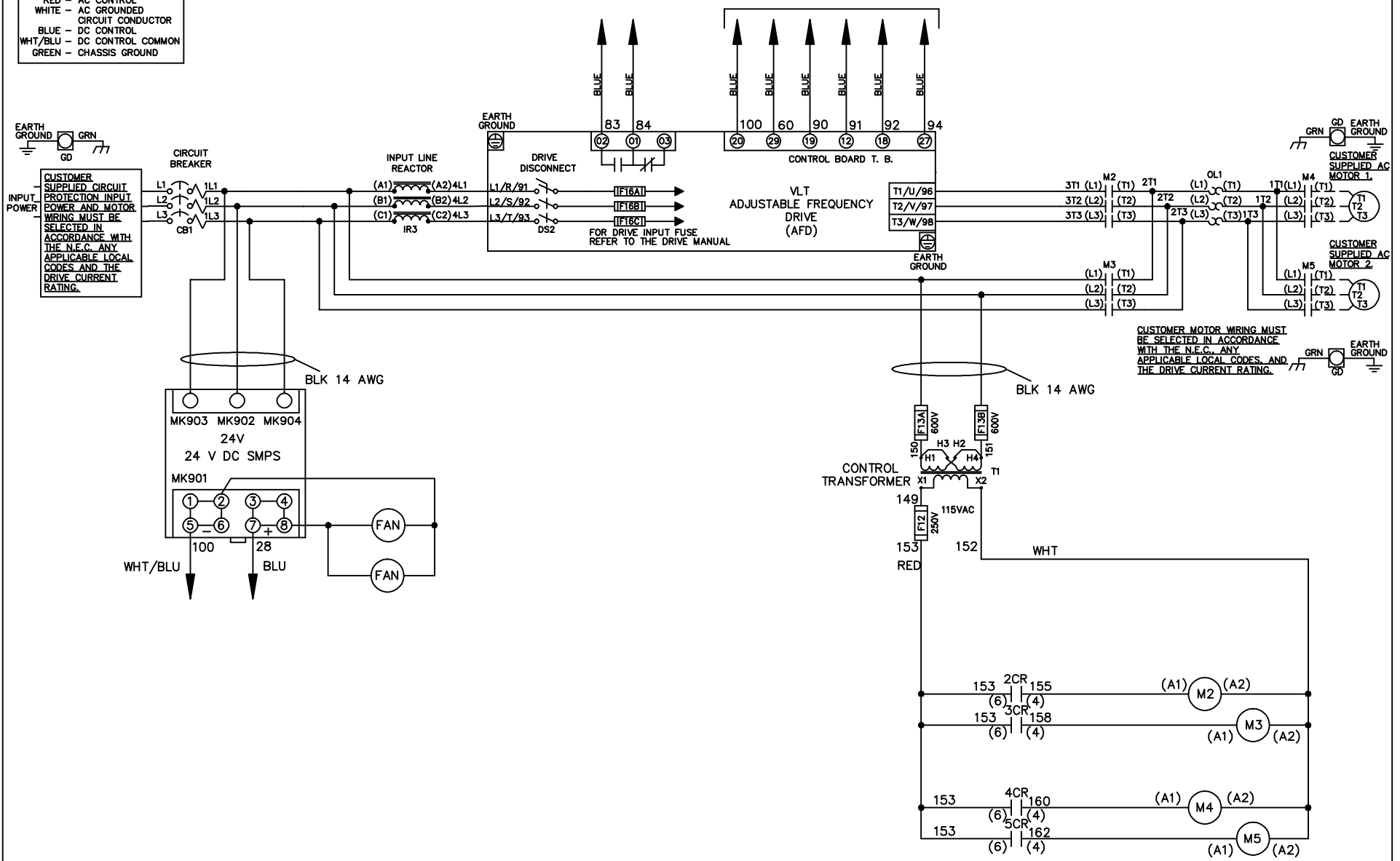


WIRE COLOR SCHEME
 BLACK - LINE VOLTAGE
 RED - AC CONTROL
 WHITE - AC GROUND
 BLUE - DC CONTROL
 WHT/BLU - DC CONTROL COMMON
 GREEN - CHASSIS GROUND

* ALL CONTROL WIRES ARE BLUE EXCEPT WHERE NOTED. TO ELECTROMECHANICAL RELAY BOARD



-NOTICE-			DRN JNW	NAME230 VOLT,2C,CB & DRIVE DISC		THE TRANE COMPANY	
THIS DRAWING IS PROPRIETARY AND SHALL NOT BE COPIED OR ITS CONTENTS DISCLOSED TO OUTSIDE PARTIES WITHOUT THE WRITTEN CONSENT OF THE TRANE COMPANY			2/8/07	,DRIVE FUSE,EMB2,FRAME C2N12 ,REACTOR,CMS		A DIVISION OF AMERICAN STANDARD INC.	
			APR			MODEL	PAGE 1 OF 2
A	SP08061	10/08					
REV	ECN	DATE					

REV	A	SP08066	10/08	DATE
CONTRACT	13-14	DRIVE	OFF	BYPASS
23-24	X			X

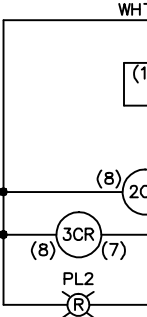
DRN	JNW	2/14/07	APR
MODEL	NAME 230 VOLT, 2C, CB & DRIVE DISC , DRIVE FUSE, EMB2, FRAME C2N12 , REACTOR, CMS		
PAGE	2	OF	2
SIZE	A		
DWG NO.	174U6664		

POSITION	CONTACT	DRIVE	OFF	BYPASS
11-12	X			X
13-14				X
21-22				X
23-24	X			

POSITION	CONTACT	MOTOR 1	AUTO	MOTOR 2
11-12	X		X	
13-14			X	X
21-22			X	X
23-24	X			

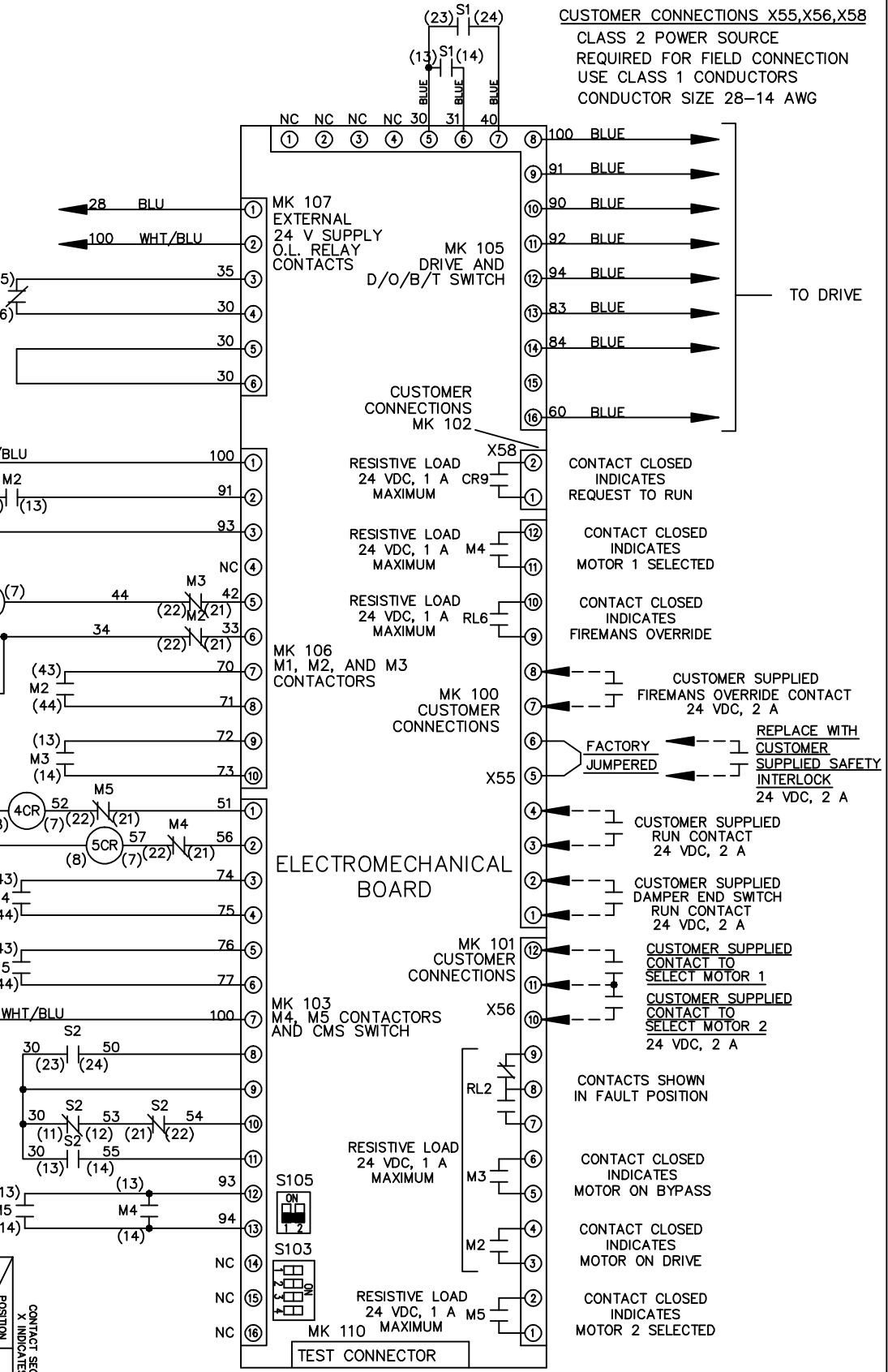
CONTACT SEQUENCE CHART FOR S1
X INDICATES CONTACT CLOSED

POSITION	CONTACT	DRIVE	OFF	BYPASS
13-14				X
23-24	X			



CONTACT SEQUENCE CHART FOR S2
X INDICATES CONTACT CLOSED

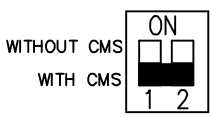
POSITION	CONTACT	MOTOR 1	AUTO	MOTOR 2
11-12	X		X	
13-14			X	X
21-22			X	X
23-24	X			



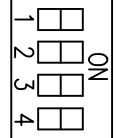
CUSTOMER CONNECTIONS X55, X56, X58
CLASS 2 POWER SOURCE
REQUIRED FOR FIELD CONNECTION
USE CLASS 1 CONDUCTORS
CONDUCTOR SIZE 28-14 AWG

ELECTROMECHANICAL BOARD

FACTORY SETTING



CUSTOMER SETTING



AUTOMATIC BYPASS TIME SELECT
ONLY # 1 ON 30 SECONDS
ONLY # 2 ON 60 SEC.
ONLY # 3 ON 300 SEC
ALL ON 15 SEC.
ALL OFF NO AUTO BYPASS (FACTORY DEFAULT)

-NOTICE-

THIS DRAWING IS PROPRIETARY AND SHALL NOT BE COPIED OR ITS CONTENTS DISCLOSED TO OUTSIDE PARTIES WITHOUT THE WRITTEN CONSENT OF THE TRANE COMPANY

NAME 230 VOLT, 2C, CB & DRIVE DISC
, DRIVE FUSE, EMB2, FRAME C2N12
, REACTOR, CMS

THE TRANE COMPANY
A DIVISION OF
AMERICAN STANDARD INC.