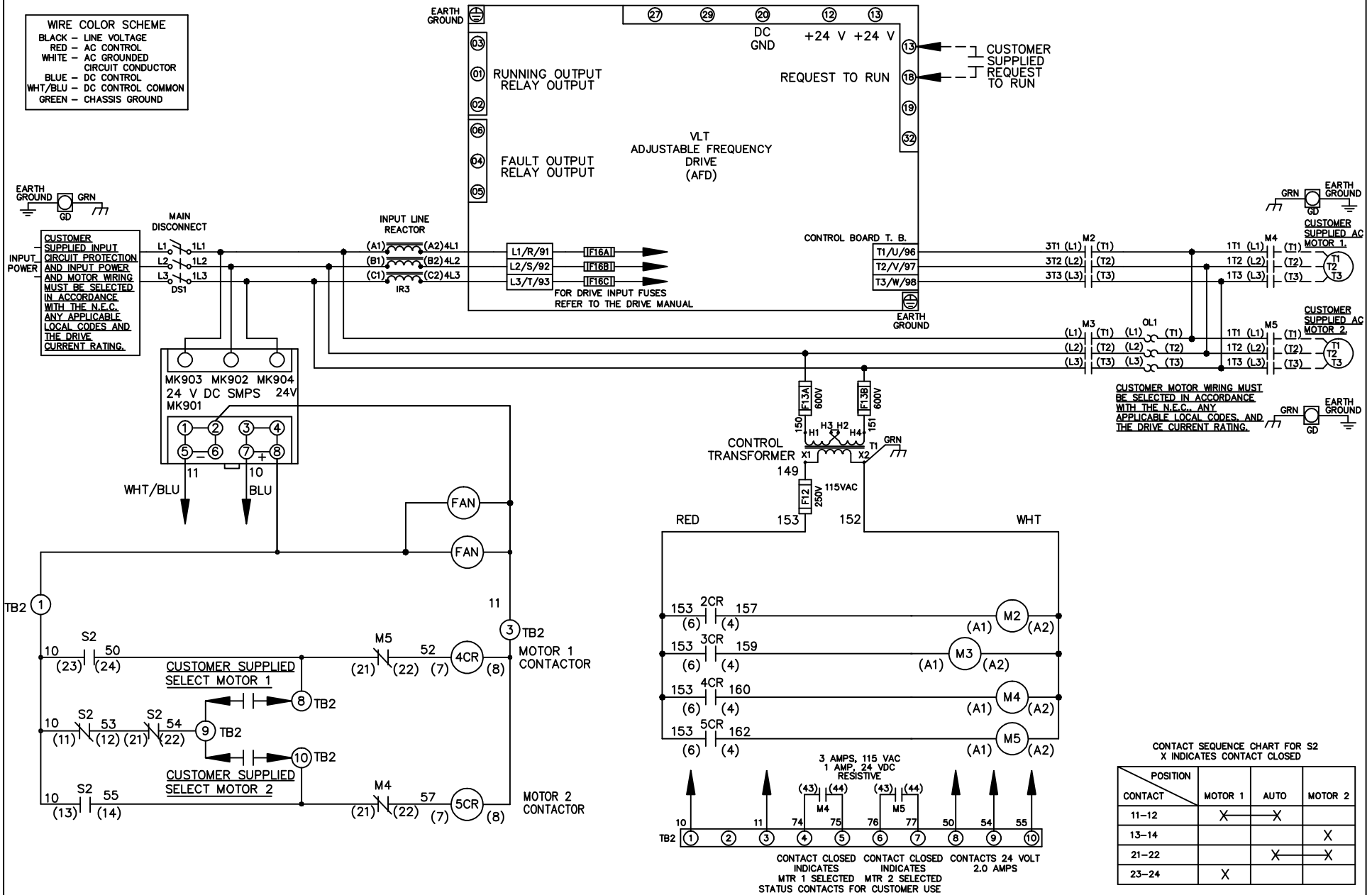


WIRE COLOR SCHEME	
BLACK	- LINE VOLTAGE
RED	- AC CONTROL
WHITE	- AC GROUNDED CIRCUIT CONDUCTOR
BLUE	- DC CONTROL
WHT/BLU	- DC CONTROL COMMON
GREEN	- CHASSIS GROUND

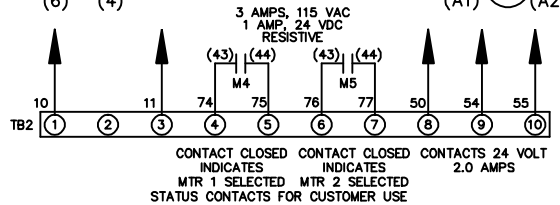


CUSTOMER SUPPLIED INPUT CIRCUIT PROTECTION AND INPUT POWER AND MOTOR WIRING MUST BE SELECTED IN ACCORDANCE WITH THE N.E.C. ANY APPLICABLE LOCAL CODES AND THE DRIVE CURRENT RATING.

CUSTOMER MOTOR WIRING MUST BE SELECTED IN ACCORDANCE WITH THE N.E.C. ANY APPLICABLE LOCAL CODES, AND THE DRIVE CURRENT RATING.

CONTACT SEQUENCE CHART FOR S2
X INDICATES CONTACT CLOSED

POSITION	MOTOR 1	AUTO	MOTOR 2
11-12	X	X	
13-14			X
21-22		X	X
23-24	X		



-NOTICE-

THIS DRAWING IS PROPRIETARY AND SHALL NOT BE COPIED OR ITS CONTENTS DISCLOSED TO OUTSIDE PARTIES WITHOUT THE WRITTEN CONSENT OF THE TRANE COMPANY

DRN JNW 2/14/07	NAME 460 VOLT, 2C, MAIN DISC , DRIVE FUSE, ECB, FRAME C2N12 , REACTOR, CMS	THE TRANE COMPANY A DIVISION OF AMERICAN STANDARD INC.
APR	MODEL	SIZE A
REV	ECN	DATE
SP08061	10/08	
1	1	174U6826

REV	ECN	DATE
A	SP08066	10/08

-NOTICE-
THIS DRAWING IS PROPRIETARY AND SHALL NOT BE COPIED OR ITS CONTENTS DISCLOSED TO OUTSIDE PARTIES WITHOUT THE WRITTEN CONSENT OF THE TRANE COMPANY

DRN JUNW
2/14/07
APR

NAME 460 VOLT, 2C, MAIN DISC, DRIVE FUSE, ECB, FRAME C2N12, REACTOR, CMS
MODEL
PAGE 2 OF 2
SIZE A
DWG NO. 174U6826

THE TRANE COMPANY
A DIVISION OF
AMERICAN STANDARD INC.

CUSTOMER CONNECTIONS X56, X57, X59
CLASS 2 POWER SOURCE
REQUIRED FOR FIELD CONNECTION
USE CLASS 1 CONDUCTORS
CONDUCTOR SIZE 28-14 AWG



ECB BOARD TB1

① EXTERNAL 24 V SUPPLY X58
②

CUSTOMER MOTOR RUNNING CONTACT X56
① 0-24 VDC MAXIMUM 1 AMPS DC RESISTIVE
②
NC ③

NC ④ + 24 V
⑤
NC ⑥
NC ⑦ + 24 V
⑧
NC ⑨
NC ⑩ + 24 V
NC ⑪
NC ⑫

① SAFETY INTERLOCK X57
② COM

③ CMS MOTOR SELECTED
④
⑤ O.L. TRIP
⑥ M2 STATUS
⑦ M3 STATUS
⑧ BYPASS MODE ENABLE
⑨ BYPASS OVERRIDE
⑩ O.L. RESET

① COM X59
② COM

NC ③
NC ④
⑤ DRIVE MODE
⑥ BYPASS MODE 24 VDC 40 mA MAX
⑦ COM
⑧ COM

TEST CONNECTOR MK 110