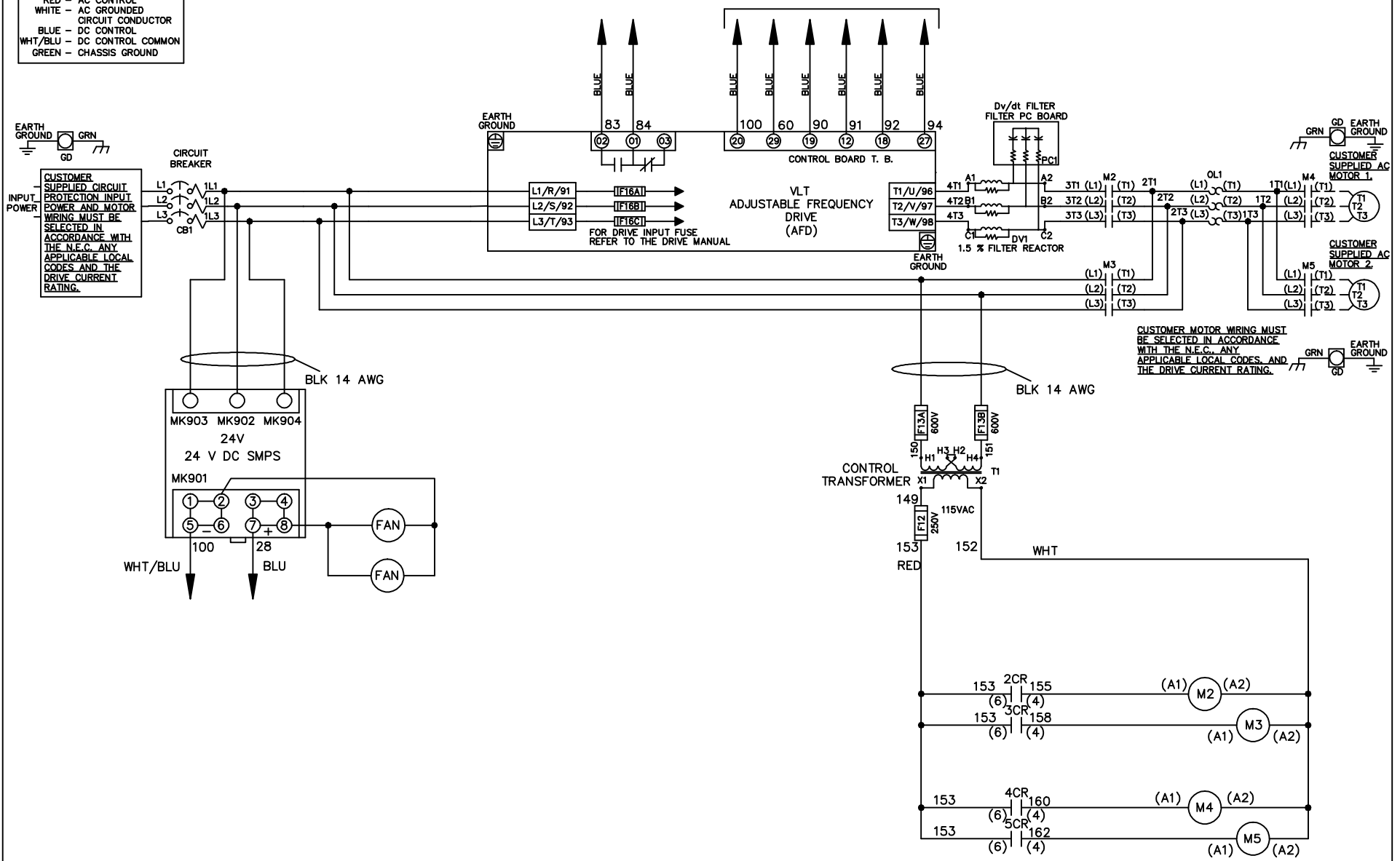


WIRE COLOR SCHEME
 BLACK - LINE VOLTAGE
 RED - AC CONTROL
 WHITE - AC GROUNDED
 WHITE - CIRCUIT CONDUCTOR
 BLUE - DC CONTROL
 WHT/BLU - DC CONTROL COMMON
 GREEN - CHASSIS GROUND

* ALL CONTROL WIRES ARE BLUE EXCEPT WHERE NOTED. TO ELECTROMECHANICAL RELAY BOARD



-NOTICE-

THIS DRAWING IS PROPRIETARY AND SHALL NOT BE COPIED OR ITS CONTENTS DISCLOSED TO OUTSIDE PARTIES WITHOUT THE WRITTEN CONSENT OF THE TRANE COMPANY

DRN JNW
2/8/07

NAME 460 VOLT, 2C, CB
 , DRIVE FUSE, EMB2, FRAME C2N12
 , DVDT, CMS

THE TRANE COMPANY
 A DIVISION OF
 AMERICAN STANDARD INC.

A	SP08061	10/08
REV	ECN	DATE

APR

MODEL

PAGE 1 OF 2

SIZE A

DWG NO.

174U6890

REV	A	ECON	DATE	DRN JNW	APR	MODEL	PAGE 2 OF 2	SIZE	DWG NO.
	SP08066		10/08	2/14/07				A	174U6890
<p>THIS DRAWING IS PROPRIETARY AND SHALL NOT BE COPIED OR ITS CONTENTS DISCLOSED TO OUTSIDE PARTIES WITHOUT THE WRITTEN CONSENT OF THE TRANE COMPANY</p> <p>NAME 460 VOLT, 2C, CB DRIVE FUSE, EMB2, FRAME C2N12</p> <p>THE TRANE COMPANY A DIVISION OF AMERICAN STANDARD INC.</p>									

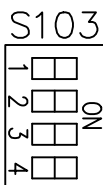
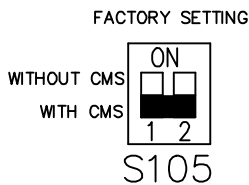
CONTACT SEQUENCE CHART FOR S1
X INDICATES CONTACT CLOSED

CONTACT	POSITION
13-14	DRIVE
13-14	OFF
23-24	BYPASS
	13-14
	23-24

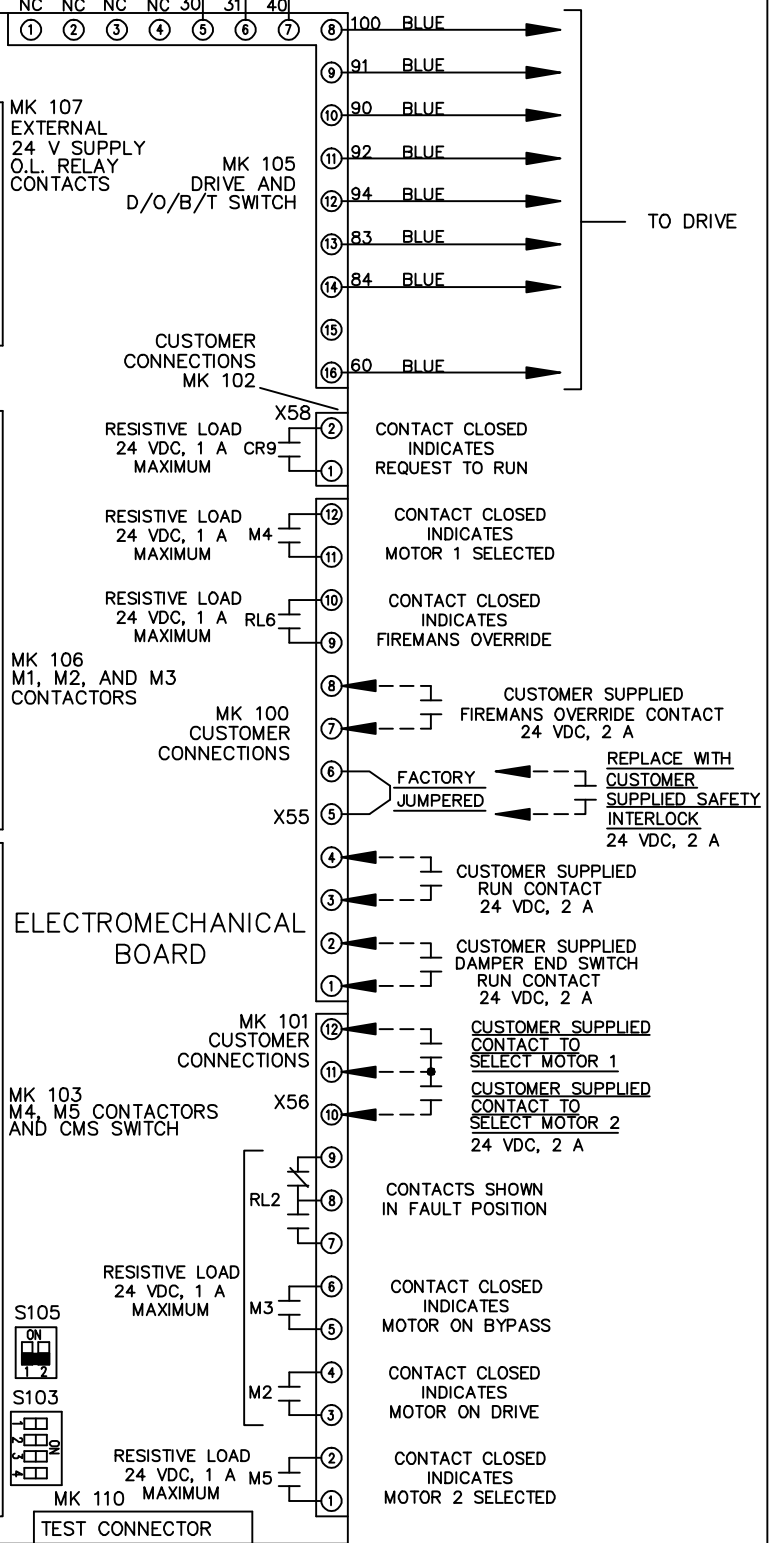


CONTACT SEQUENCE CHART FOR S2
X INDICATES CONTACT CLOSED

CONTACT	POSITION
11-12	MOTOR 1
11-12	AUTO
13-14	MOTOR 2
13-14	AUTO
21-22	MOTOR 1
21-22	AUTO
23-24	MOTOR 2
23-24	AUTO



CUSTOMER CONNECTIONS X55, X56, X58
CLASS 2 POWER SOURCE
REQUIRED FOR FIELD CONNECTION
USE CLASS 1 CONDUCTORS
CONDUCTOR SIZE 28-14 AWG



ELECTROMECHANICAL BOARD

TEST CONNECTOR

CUSTOMER SUPPLIED
FIREMANS OVERRIDE CONTACT
24 VDC, 2 A

REPLACE WITH
CUSTOMER
SUPPLIED SAFETY
INTERLOCK
24 VDC, 2 A

CUSTOMER SUPPLIED
RUN CONTACT
24 VDC, 2 A

CUSTOMER SUPPLIED
DAMPER END SWITCH
RUN CONTACT
24 VDC, 2 A

CUSTOMER SUPPLIED
CONTACT TO
SELECT MOTOR 1

CUSTOMER SUPPLIED
CONTACT TO
SELECT MOTOR 2
24 VDC, 2 A

CONTACTS SHOWN
IN FAULT POSITION

CONTACT CLOSED
INDICATES
MOTOR ON BYPASS

CONTACT CLOSED
INDICATES
MOTOR ON DRIVE

CONTACT CLOSED
INDICATES
MOTOR 2 SELECTED