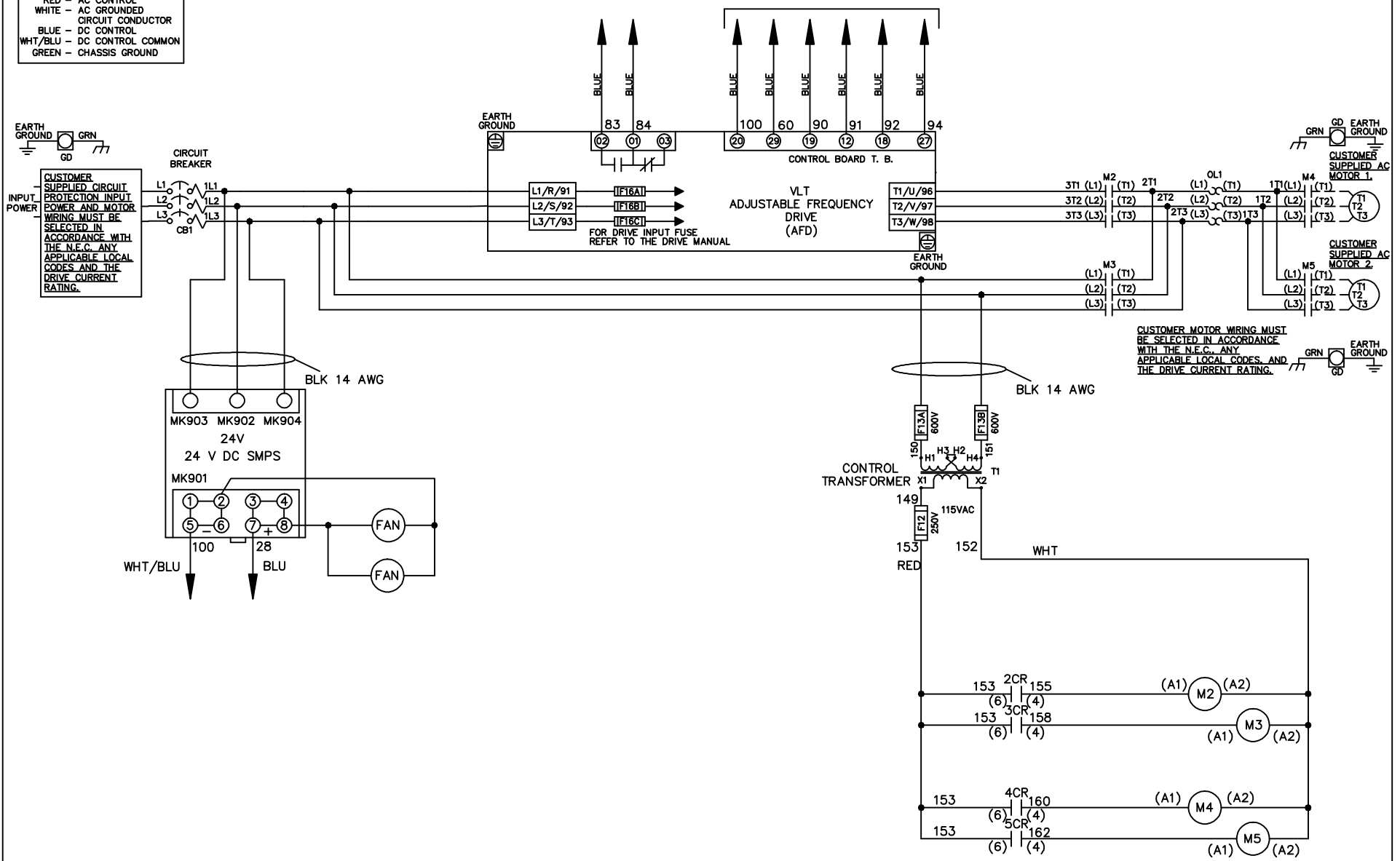


WIRE COLOR SCHEME
 BLACK - LINE VOLTAGE
 RED - AC CONTROL
 WHITE - AC GROUND
 BLUE - DC CONTROL
 WHT/BLU - DC CONTROL COMMON
 GREEN - CHASSIS GROUND

* ALL CONTROL WIRES ARE BLUE EXCEPT WHERE NOTED. TO ELECTROMECHANICAL RELAY BOARD



CUSTOMER MOTOR WIRING MUST BE SELECTED IN ACCORDANCE WITH THE N.E.C. ANY APPLICABLE LOCAL CODES AND THE DRIVE CURRENT RATING.

-NOTICE-

THIS DRAWING IS PROPRIETARY AND SHALL NOT BE COPIED OR ITS CONTENTS DISCLOSED TO OUTSIDE PARTIES WITHOUT THE WRITTEN CONSENT OF THE TRANE COMPANY

DRN JNW
2/8/07

NAME460 VOLT,2C,CB
 ,DRIVE FUSE,EMB2,FRAME C2N12
 ,NO REACTOR & DVDT,CMS

THE TRANE COMPANY
 A DIVISION OF
 AMERICAN STANDARD INC.

A	SP08061	10/08
REV	ECN	DATE

APR

MODEL

PAGE 1 OF 2

SIZE A

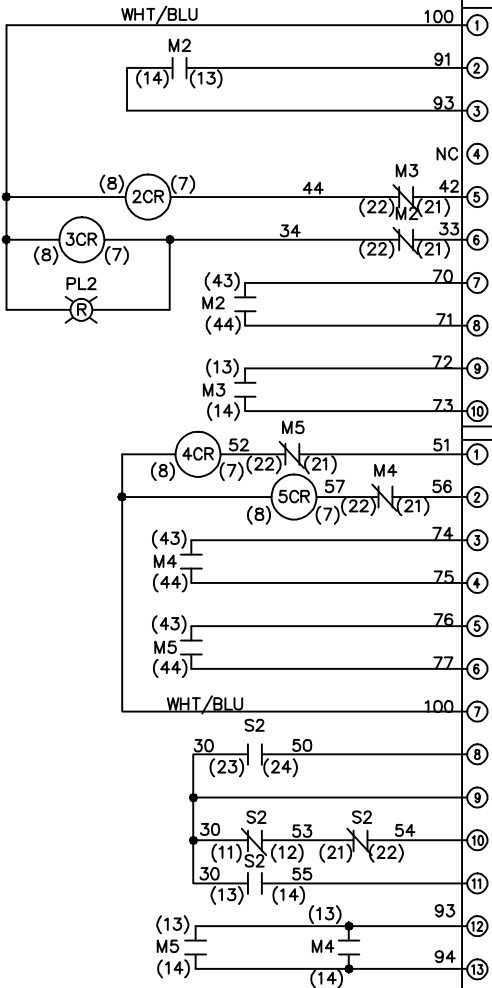
DWG NO.

174U6891

REV	A	ECON	DATE	DRN JNW	APR	MODEL	PAGE 2 OF 2	SIZE A	DWG NO.
	SP08066		10/08	2/14/07					174U6891
THIS DRAWING IS PROPRIETARY AND SHALL NOT BE COPIED OR ITS CONTENTS DISCLOSED TO OUTSIDE PARTIES WITHOUT THE WRITTEN CONSENT OF THE TRANE COMPANY				NAME 460 VOLT, 2C, CB DRIVE FUSE, EMB2, FRAME C2N12 , NO REACTOR & DVDI, CMS			THE TRANE COMPANY A DIVISION OF AMERICAN STANDARD INC.		

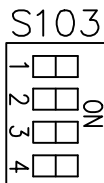
CONTACT SEQUENCE CHART FOR S1
X INDICATES CONTACT CLOSED

CONTACT	POSITION
13-14	DRIVE
23-24	OFF
	BYPASS
	X

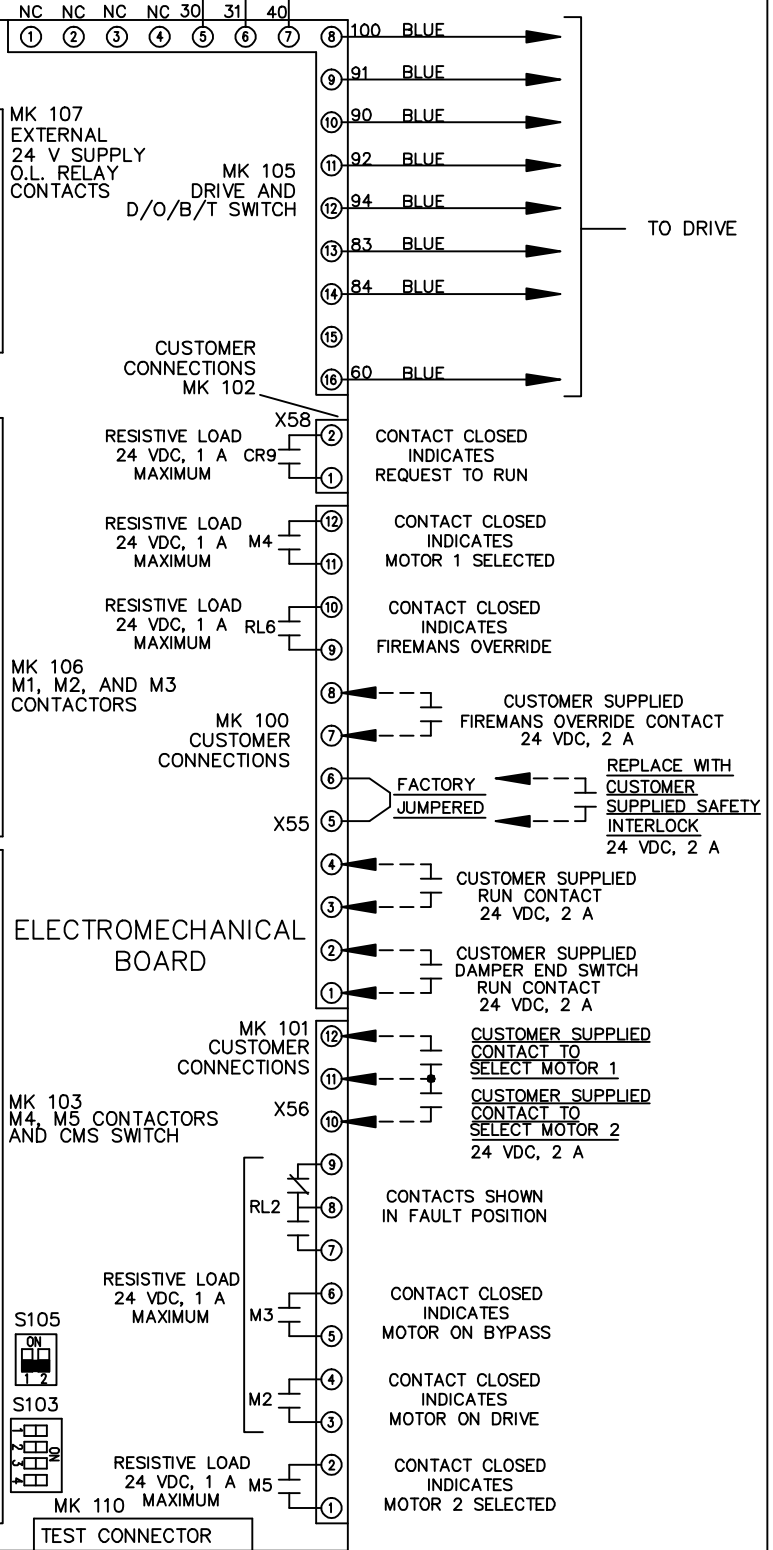


CONTACT SEQUENCE CHART FOR S2
X INDICATES CONTACT CLOSED

CONTACT	POSITION
11-12	MOTOR 1
13-14	AUTO
21-22	MOTOR 2
23-24	X



CUSTOMER CONNECTIONS X55, X56, X58
 CLASS 2 POWER SOURCE
 REQUIRED FOR FIELD CONNECTION
 USE CLASS 1 CONDUCTORS
 CONDUCTOR SIZE 28-14 AWG



ELECTROMECHANICAL BOARD

TEST CONNECTOR

CUSTOMER SUPPLIED
 FIREMANS OVERRIDE CONTACT
 24 VDC, 2 A

REPLACE WITH
 CUSTOMER
 SUPPLIED SAFETY
 INTERLOCK
 24 VDC, 2 A

CUSTOMER SUPPLIED
 RUN CONTACT
 24 VDC, 2 A

CUSTOMER SUPPLIED
 DAMPER END SWITCH
 RUN CONTACT
 24 VDC, 2 A

CUSTOMER SUPPLIED
 CONTACT TO
 SELECT MOTOR 1

CUSTOMER SUPPLIED
 CONTACT TO
 SELECT MOTOR 2
 24 VDC, 2 A

CONTACTS SHOWN
 IN FAULT POSITION

CONTACT CLOSED
 INDICATES
 MOTOR ON BYPASS

CONTACT CLOSED
 INDICATES
 MOTOR ON DRIVE

CONTACT CLOSED
 INDICATES
 MOTOR 2 SELECTED