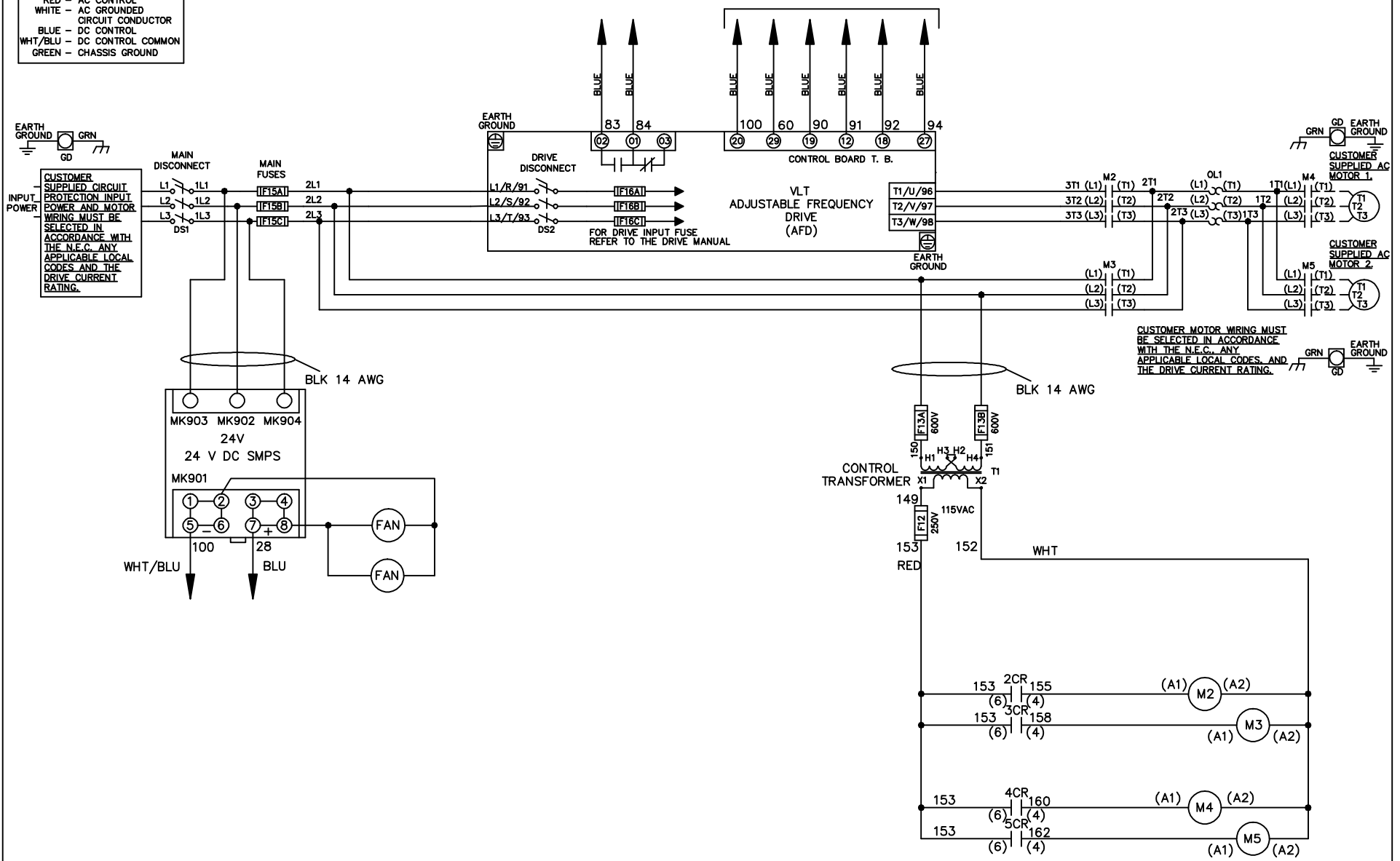


WIRE COLOR SCHEME
 BLACK - LINE VOLTAGE
 RED - AC CONTROL
 WHITE - AC GROUNDED
 CIRCUIT CONDUCTOR
 BLUE - DC CONTROL
 WHT/BLU - DC CONTROL COMMON
 GREEN - CHASSIS GROUND

* ALL CONTROL WIRES ARE BLUE EXCEPT WHERE NOTED. TO ELECTROMECHANICAL RELAY BOARD



CUSTOMER MOTOR WIRING MUST BE SELECTED IN ACCORDANCE WITH THE N.E.C. ANY APPLICABLE LOCAL CODES, AND THE DRIVE CURRENT RATING.

-NOTICE-

THIS DRAWING IS PROPRIETARY AND SHALL NOT BE COPIED OR ITS CONTENTS DISCLOSED TO OUTSIDE PARTIES WITHOUT THE WRITTEN CONSENT OF THE TRANE COMPANY

DRN JNW
2/8/07

NAME 460 VOLT, 2C, MAIN & DRIVE DISC
 , MAIN FUSE, EMB2, FRAME C2N12
 , NO REACTOR & DVDT, CMS

THE TRANE COMPANY
 A DIVISION OF
 AMERICAN STANDARD INC.

A	SP08061	10/08
REV	ECN	DATE

APR

MODEL

PAGE 1 OF 2

SIZE A

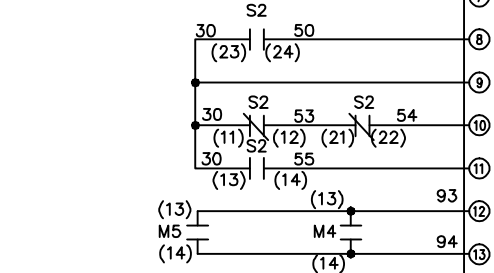
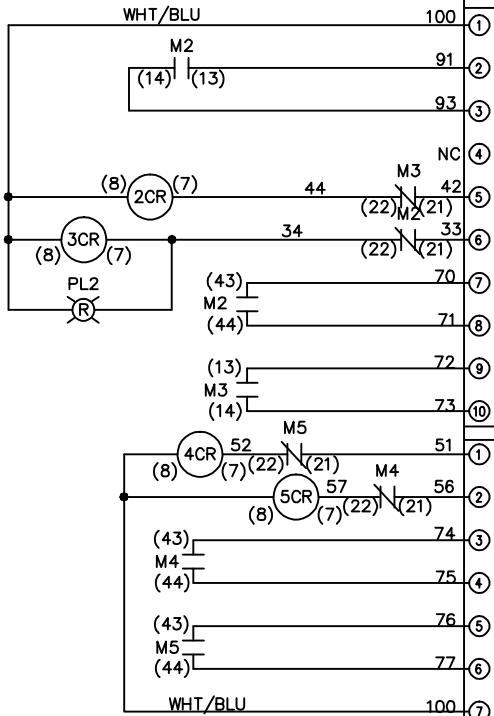
DWG NO.

174U6915

REV	ECON	DATE	DRN JNW	APR	MODEL	PAGE 2 OF 2	SIZE A	DWG NO.	174U6915
A	SP08066	10/08	2/14/07						
			NAME 460 VOLT, 2C MAIN & DRIVE DISC						
			, MAIN FUSE, EMB2 FRAME C2N12						
			, NO REACTOR & DVDI, CMS						
			THE TRANE COMPANY						
			A DIVISION OF						
			AMERICAN STANDARD INC.						

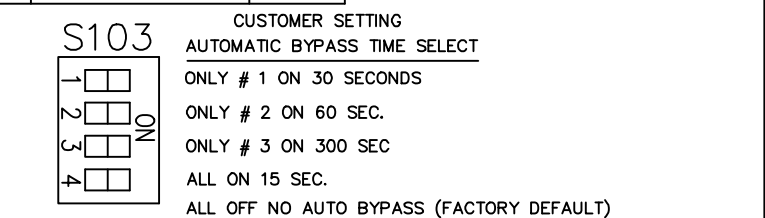
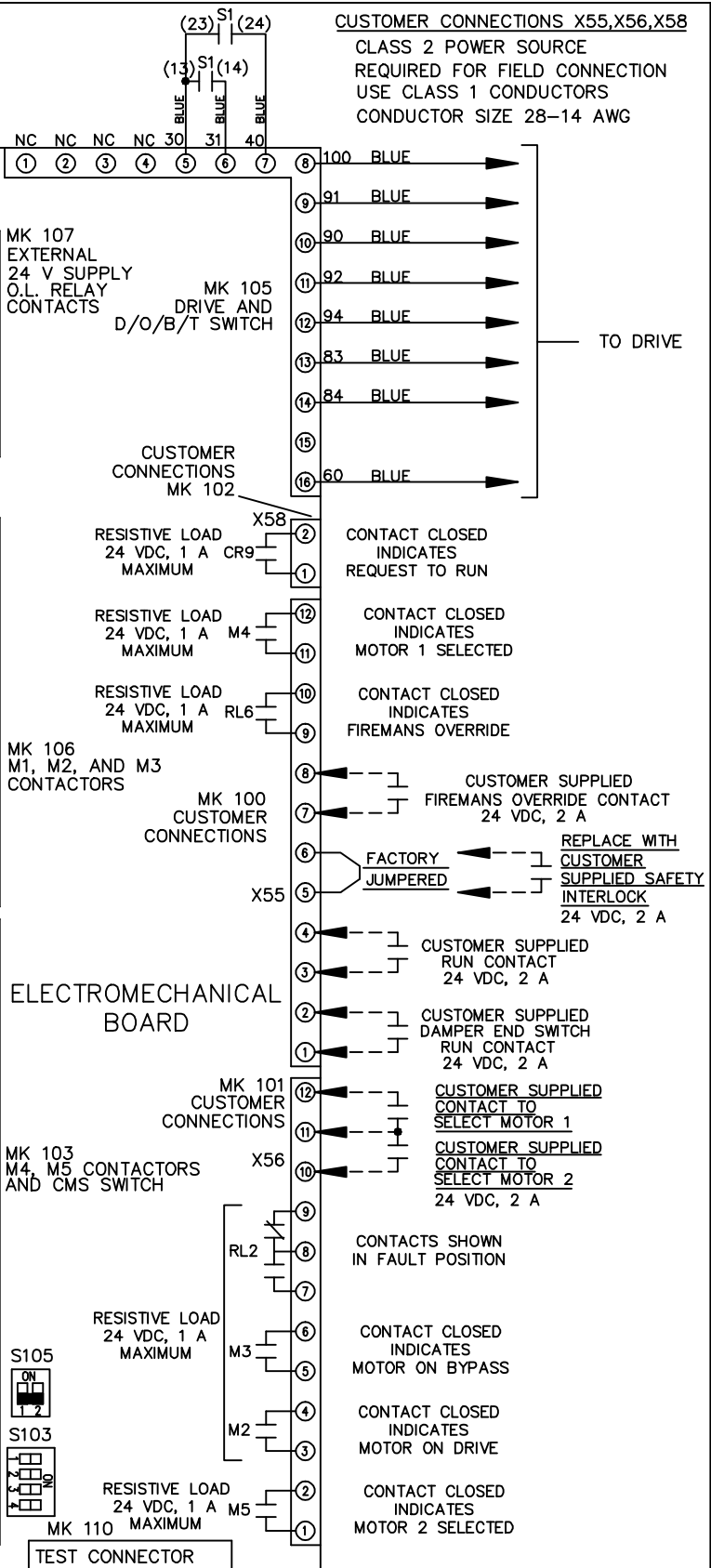
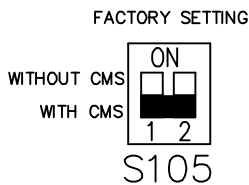
CONTACT SEQUENCE CHART FOR S1
X INDICATES CONTACT CLOSED

CONTACT	POSITION	
13-14	DRIVE	
13-14	OFF	
23-24	BYPASS	
13-14	DRIVE	X
13-14	OFF	
23-24	BYPASS	X



CONTACT SEQUENCE CHART FOR S2
X INDICATES CONTACT CLOSED

CONTACT	POSITION	
11-12	MOTOR 1	
11-12	AUTO	
13-14	MOTOR 2	
13-14	AUTO	
21-22	MOTOR 1	
21-22	AUTO	
23-24	MOTOR 2	
23-24	AUTO	
11-12	MOTOR 1	X
11-12	AUTO	X
13-14	MOTOR 2	X
13-14	AUTO	X
21-22	MOTOR 1	X
21-22	AUTO	X
23-24	MOTOR 2	X
23-24	AUTO	X



-NOTICE-

THIS DRAWING IS PROPRIETARY AND SHALL NOT BE COPIED OR ITS CONTENTS DISCLOSED TO OUTSIDE PARTIES WITHOUT THE WRITTEN CONSENT OF THE TRANE COMPANY