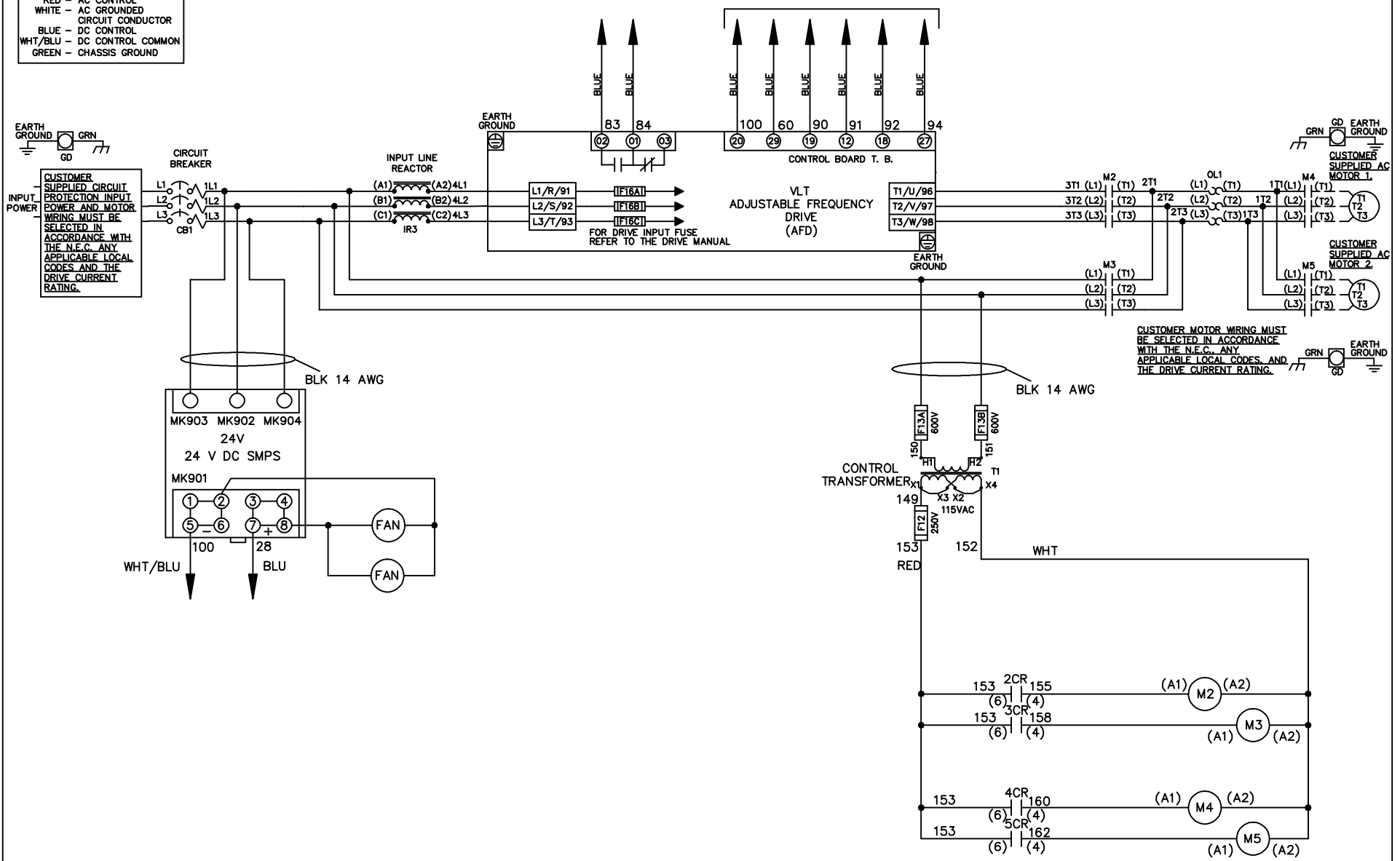


WIRE COLOR SCHEME
 BLACK - LINE VOLTAGE
 RED - AC CONTROL
 WHITE - AC GROUND
 BLUE - DC CONTROL
 WHT/BLU - DC CONTROL COMMON
 GREEN - CHASSIS GROUND

* ALL CONTROL WIRES ARE BLUE EXCEPT WHERE NOTED. TO ELECTROMECHANICAL RELAY BOARD



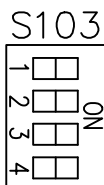
			-NOTICE-		DRN JNW 2/8/07		NAME600 VOLT,2C,CB ,DRIVE FUSE,EMB2,FRAME C2N12 ,REACTOR,CMS		THE TRANE COMPANY A DIVISION OF AMERICAN STANDARD INC.	
A	SP08061	10/08	THIS DRAWING IS PROPRIETARY AND SHALL NOT BE COPIED OR ITS CONTENTS DISCLOSED TO OUTSIDE PARTIES WITHOUT THE WRITTEN CONSENT OF THE TRANE COMPANY			APR	MODEL	PAGE 1 OF 2	SIZE A	DWG NO. 174U7123
REV	ECN	DATE								

REV	A	SP08066	10/08	DATE	
ECON					
- NOTICE -					
THIS DRAWING IS PROPRIETARY AND SHALL NOT BE COPIED OR ITS CONTENTS DISCLOSED TO OUTSIDE PARTIES WITHOUT THE WRITTEN CONSENT OF THE TRANE COMPANY					
DRN	JNW	2/14/07	APR	NAME	600 VOLT, 2C, CB
MODEL	, DRIVE FUSE, EMB2, FRAME C2N12				
PAGE	2	OF	2	SIZE	A
DWG	NO.	174U7123			
THE TRANE COMPANY A DIVISION OF AMERICAN STANDARD INC.					

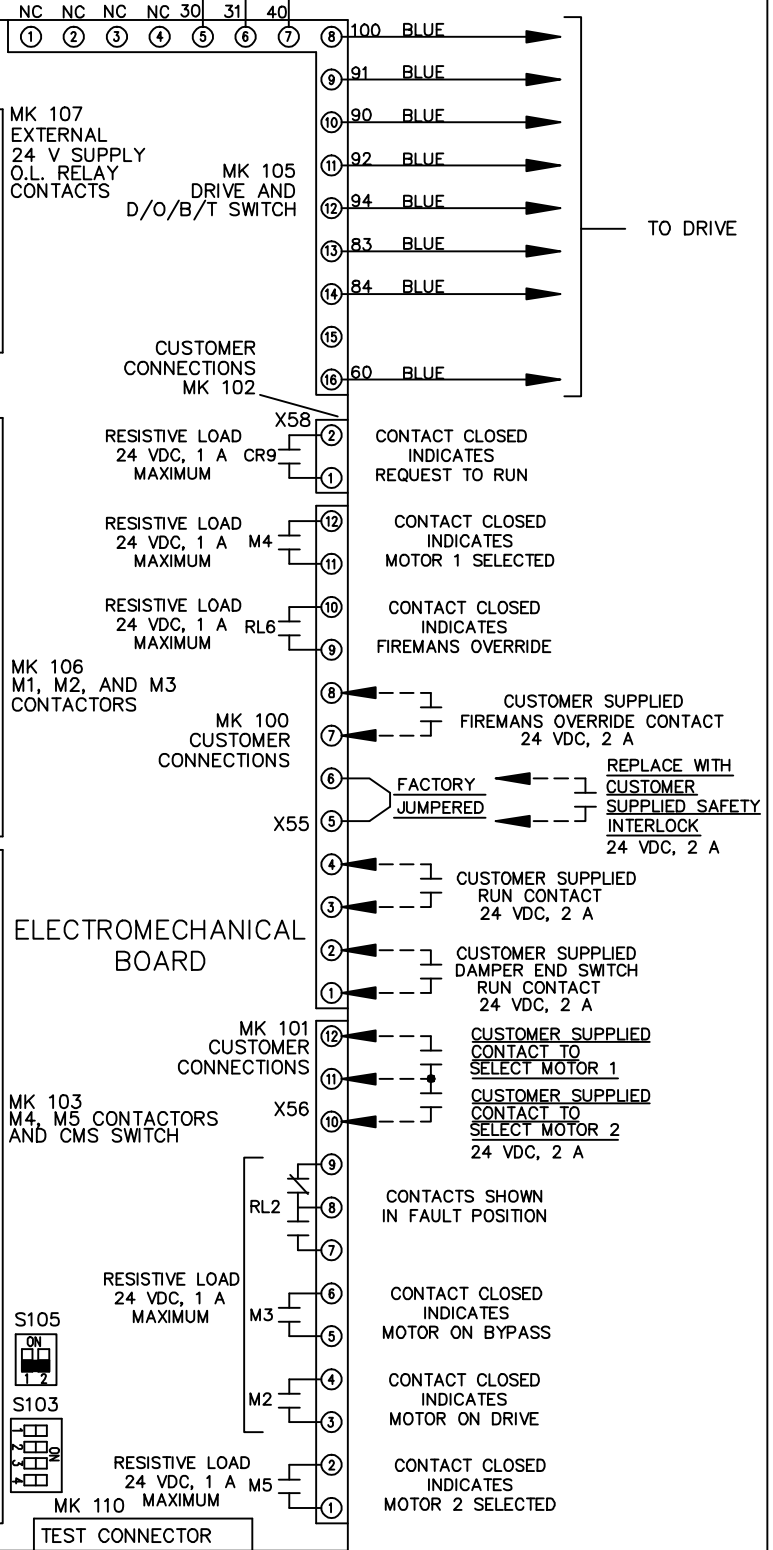
CONTACT SEQUENCE CHART FOR S1		
POSITION	CONTACT	X INDICATES CONTACT CLOSED
DRIVE	13-14	
OFF	23-24	X
BYPASS		



CONTACT SEQUENCE CHART FOR S2		
POSITION	CONTACT	X INDICATES CONTACT CLOSED
MOTOR 1	11-12	X
MOTOR 2	13-14	X
	21-22	X
	23-24	X



CUSTOMER CONNECTIONS X55, X56, X58
CLASS 2 POWER SOURCE
REQUIRED FOR FIELD CONNECTION
USE CLASS 1 CONDUCTORS
CONDUCTOR SIZE 28-14 AWG



TO DRIVE