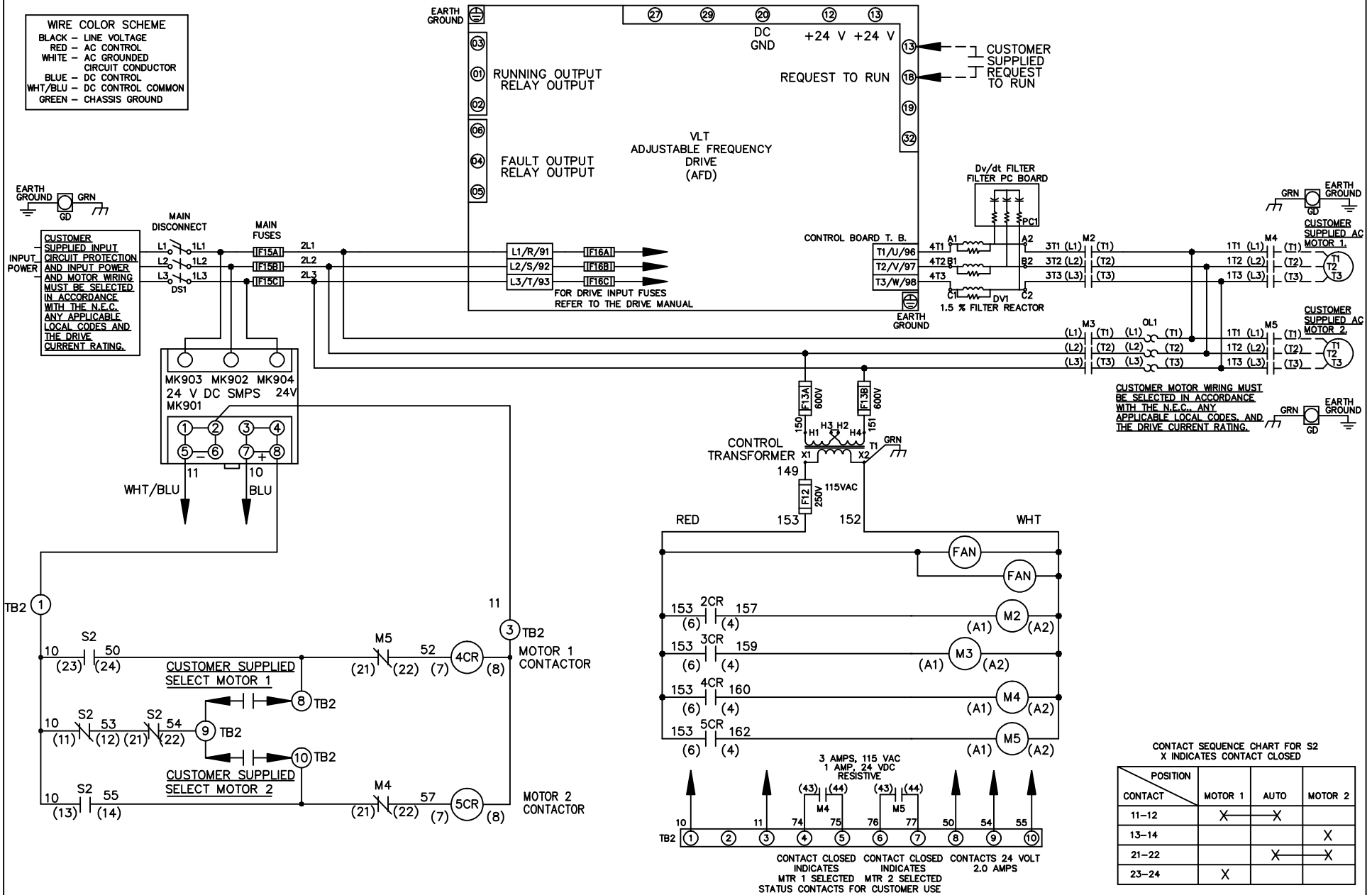


**WIRE COLOR SCHEME**  
 BLACK - LINE VOLTAGE  
 RED - AC CONTROL  
 WHITE - AC GROUNDED  
 CIRCUIT CONDUCTOR  
 BLUE - DC CONTROL  
 WHT/BLU - DC CONTROL COMMON  
 GREEN - CHASSIS GROUND



REV	ECN	DATE
A	SP08061	10/08

-NOTICE-  
 THIS DRAWING IS PROPRIETARY AND SHALL NOT BE COPIED OR ITS CONTENTS DISCLOSED TO OUTSIDE PARTIES WITHOUT THE WRITTEN CONSENT OF THE TRANE COMPANY

DRN JNW  
 2/14/07  
 APR

NAME 460 VOLT, 2C, MAIN DISC  
 , MAIN FUSE, ECB, FRAME D1-D2  
 , DVDT, CMS  
 MODEL

THE TRANE COMPANY  
 A DIVISION OF  
 AMERICAN STANDARD INC.  
 PAGE 1 OF 2  
 SIZE A  
 DWG NO. 174U7298

REV	ECN	DATE
A	SP08066	10/08

-NOTICE-  
THIS DRAWING IS PROPRIETARY AND SHALL NOT BE COPIED OR ITS CONTENTS DISCLOSED TO OUTSIDE PARTIES WITHOUT THE WRITTEN CONSENT OF THE TRANE COMPANY

DRN JUNW  
2/14/07  
APR

NAME 460 VOLT, 2C, MAIN DISC  
, MAIN FUSE, ECB, FRAME D1-D2  
, DVDT, CMS

MODEL

PAGE 2 OF 2

SIZE A

DWG NO. 174U7298

THE TRANE COMPANY  
A DIVISION OF  
AMERICAN STANDARD INC.

CUSTOMER CONNECTIONS X56, X57, X59  
CLASS 2 POWER SOURCE  
REQUIRED FOR FIELD CONNECTION  
USE CLASS 1 CONDUCTORS  
CONDUCTOR SIZE 28-14 AWG



ECB BOARD TB1

① EXTERNAL 24 V SUPPLY X58  
②

CUSTOMER MOTOR RUNNING CONTACT X56  
① 0-24 VDC MAXIMUM 1 AMPS DC RESISTIVE  
②  
NC ③

NC ④ + 24 V  
⑤

NC ⑥  
NC ⑦ + 24 V  
⑧

NC ⑨  
NC ⑩ + 24 V  
NC ⑪

NC ⑫  
18

① SAFETY INTERLOCK X57  
② COM

③ CMS MOTOR SELECTED  
④

⑤ O.L. TRIP  
⑥ M2 STATUS  
⑦ M3 STATUS

⑧ BYPASS MODE ENABLE  
⑨ BYPASS OVERRIDE

⑩ O.L. RESET  
① COM X59  
② COM

NC ③  
NC ④

⑤ DRIVE MODE  
⑥ BYPASS MODE  
⑦ COM  
⑧ COM

23

TEST CONNECTOR MK 110