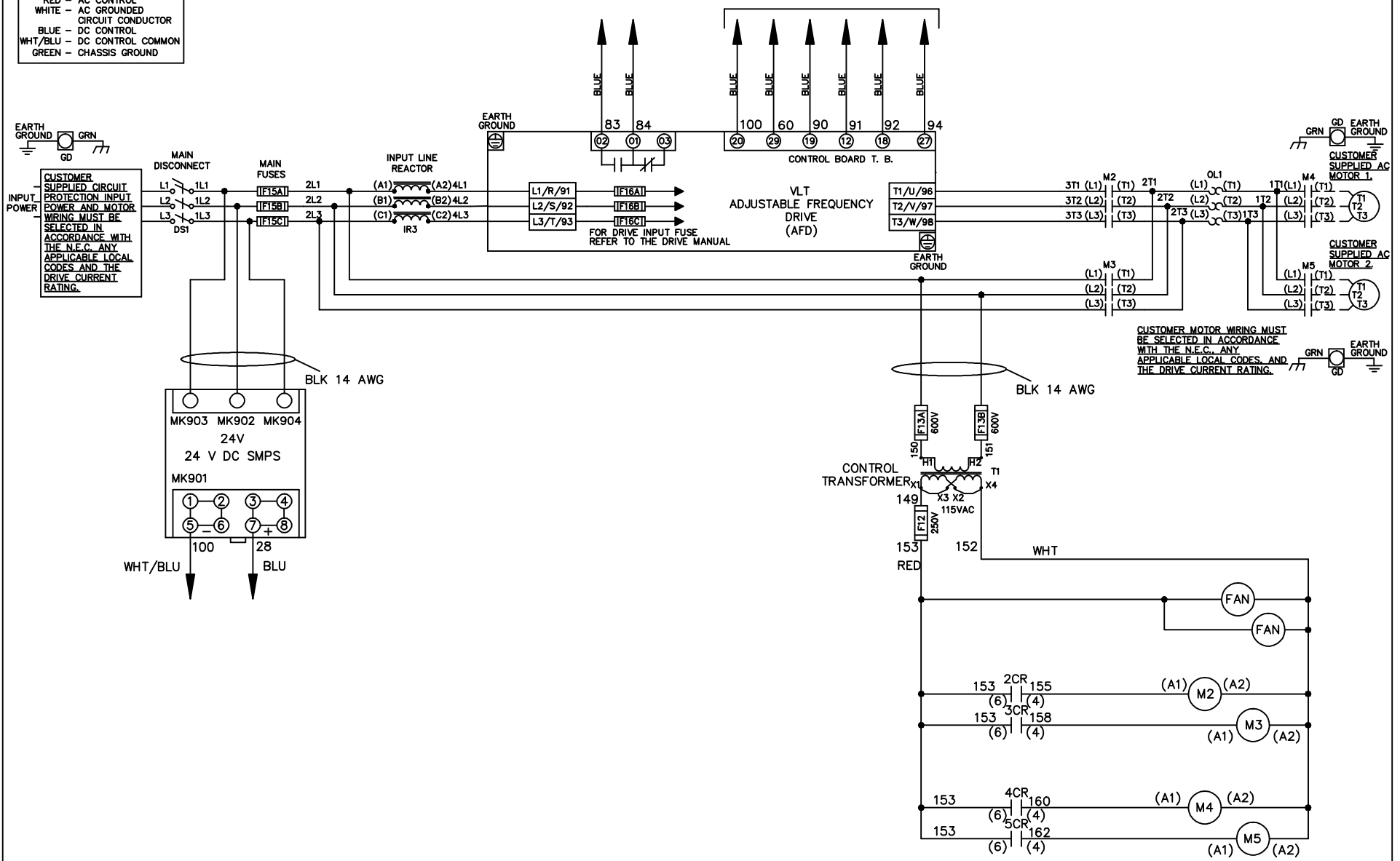


WIRE COLOR SCHEME
 BLACK - LINE VOLTAGE
 RED - AC CONTROL
 WHITE - AC GROUND
 BLUE - DC CONTROL
 WHT/BLU - DC CONTROL COMMON
 GREEN - CHASSIS GROUND

* ALL CONTROL WIRES ARE BLUE EXCEPT WHERE NOTED. TO ELECTROMECHANICAL RELAY BOARD



CUSTOMER MOTOR WIRING MUST BE SELECTED IN ACCORDANCE WITH THE N.E.C. ANY APPLICABLE LOCAL CODES AND THE DRIVE CURRENT RATING.

-NOTICE-

THIS DRAWING IS PROPRIETARY AND SHALL NOT BE COPIED OR ITS CONTENTS DISCLOSED TO OUTSIDE PARTIES WITHOUT THE WRITTEN CONSENT OF THE TRANE COMPANY

DRN JNW
2/8/07

NAME600 VOLT,2C,MAIN DISC
 ,MAIN FUSE,EMB2,FRAME D1-D2
 ,REACTOR,CMS

THE TRANE COMPANY
 A DIVISION OF
 AMERICAN STANDARD INC.

A	SP08061	10/08
REV	ECN	DATE

APR

MODEL

PAGE 1 OF 2

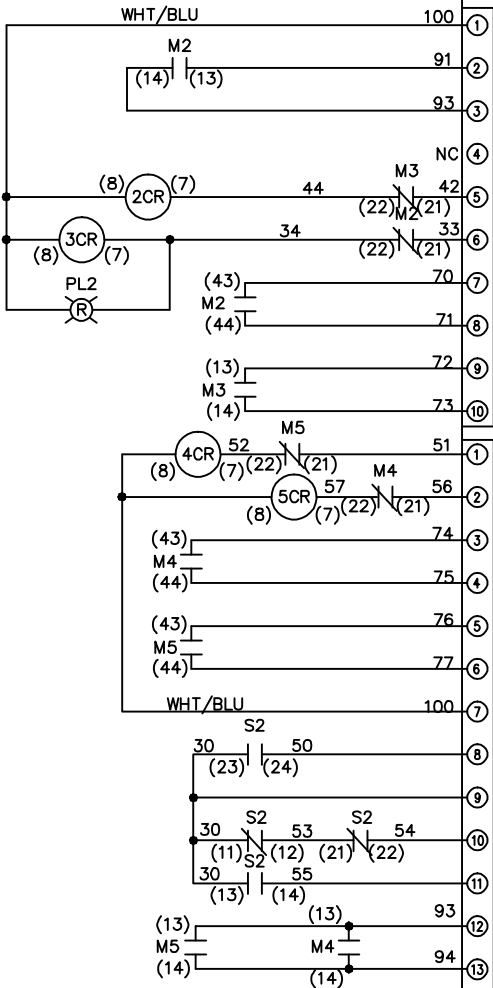
SIZE A

DWG NO.

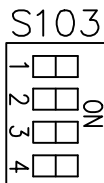
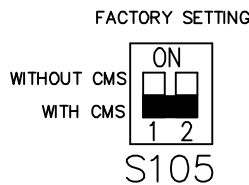
174U7609

REV	A	ECON	DATE	DRN JNW	APR	MODEL	PAGE 2 OF 2	SIZE	DWG NO.
	SP08066	10/08		2/14/07		NAME 600 VOLT, 2C, MAIN DISC , MAIN FUSE, EMB2, FRAME D1-D2 , REACTOR, CMS		A	174U7609
<p style="text-align: center;">-NOTICE-</p> <p style="text-align: center;">THIS DRAWING IS PROPRIETARY AND SHALL NOT BE COPIED OR ITS CONTENTS DISCLOSED TO OUTSIDE PARTIES WITHOUT THE WRITTEN CONSENT OF THE TRANE COMPANY</p>									
<p>THE TRANE COMPANY A DIVISION OF AMERICAN STANDARD INC.</p>									

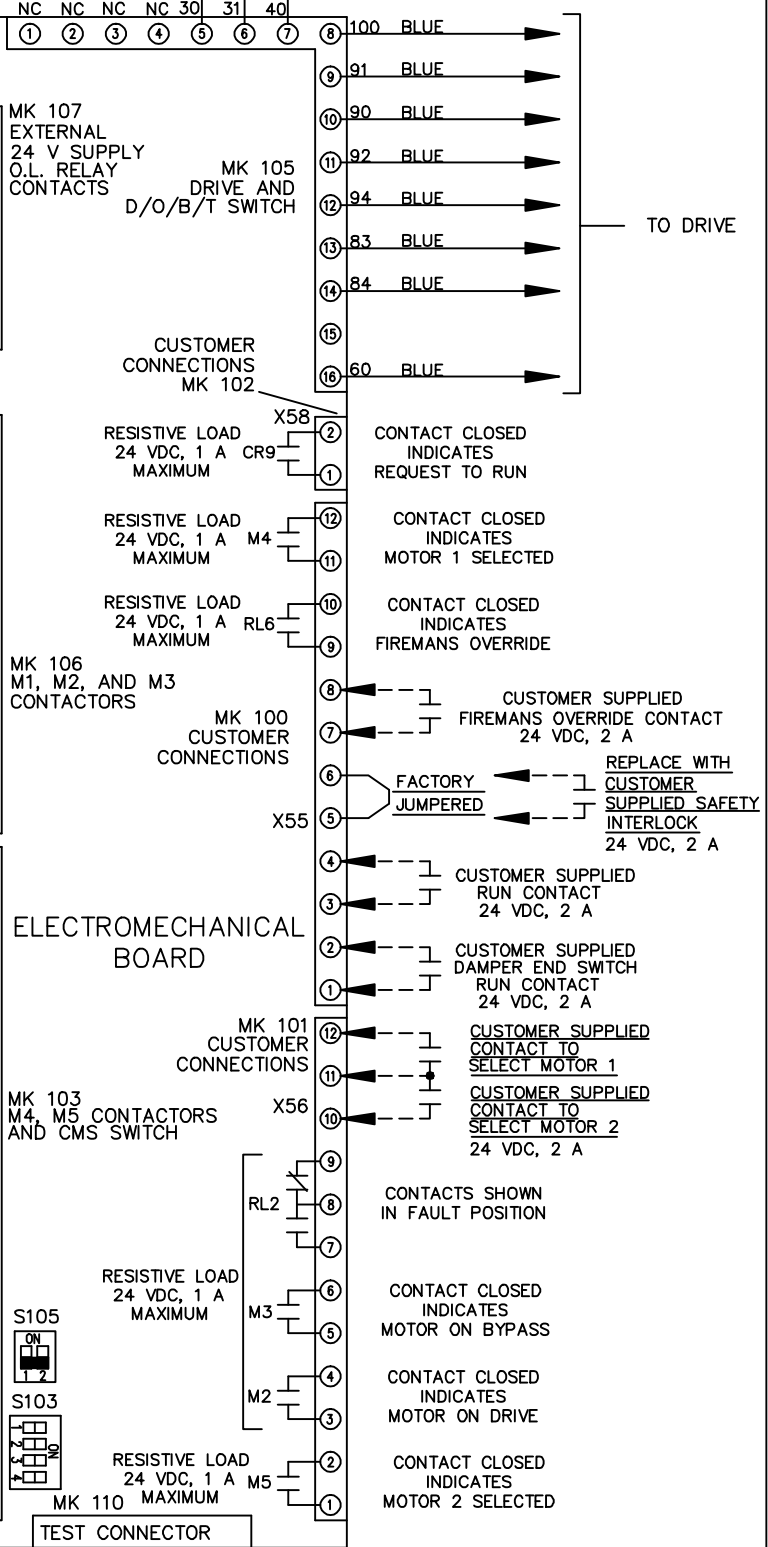
POSITION	CONTACT
DRIVE	13-14
OFF	23-24
BYPASS	
	X



POSITION	CONTACT
MOTOR 1	11-12
AUTO	13-14
MOTOR 2	21-22
	23-24
	X



CUSTOMER CONNECTIONS X55, X56, X58
CLASS 2 POWER SOURCE
REQUIRED FOR FIELD CONNECTION
USE CLASS 1 CONDUCTORS
CONDUCTOR SIZE 28-14 AWG



ELECTROMECHANICAL BOARD

TEST CONNECTOR

RESISTIVE LOAD 24 VDC, 1 A M5 MAXIMUM

RESISTIVE LOAD 24 VDC, 1 A M4 MAXIMUM

RESISTIVE LOAD 24 VDC, 1 A M3 MAXIMUM

RESISTIVE LOAD 24 VDC, 1 A M2 MAXIMUM

RESISTIVE LOAD 24 VDC, 1 A M1 MAXIMUM

RESISTIVE LOAD 24 VDC, 1 A CR9 MAXIMUM

RESISTIVE LOAD 24 VDC, 1 A M4 MAXIMUM

RESISTIVE LOAD 24 VDC, 1 A RL6 MAXIMUM

RESISTIVE LOAD 24 VDC, 1 A M5 MAXIMUM

CONTACT CLOSED INDICATES REQUEST TO RUN

CONTACT CLOSED INDICATES MOTOR 1 SELECTED

CONTACT CLOSED INDICATES FIREMANS OVERRIDE

CUSTOMER SUPPLIED FIREMANS OVERRIDE CONTACT 24 VDC, 2 A

REPLACE WITH CUSTOMER SUPPLIED SAFETY INTERLOCK 24 VDC, 2 A

CUSTOMER SUPPLIED RUN CONTACT 24 VDC, 2 A

CUSTOMER SUPPLIED DAMPER END SWITCH RUN CONTACT 24 VDC, 2 A

CUSTOMER SUPPLIED CONTACT TO SELECT MOTOR 1

CUSTOMER SUPPLIED CONTACT TO SELECT MOTOR 2 24 VDC, 2 A

CONTACTS SHOWN IN FAULT POSITION

CONTACT CLOSED INDICATES MOTOR ON BYPASS

CONTACT CLOSED INDICATES MOTOR ON DRIVE

CONTACT CLOSED INDICATES MOTOR 2 SELECTED