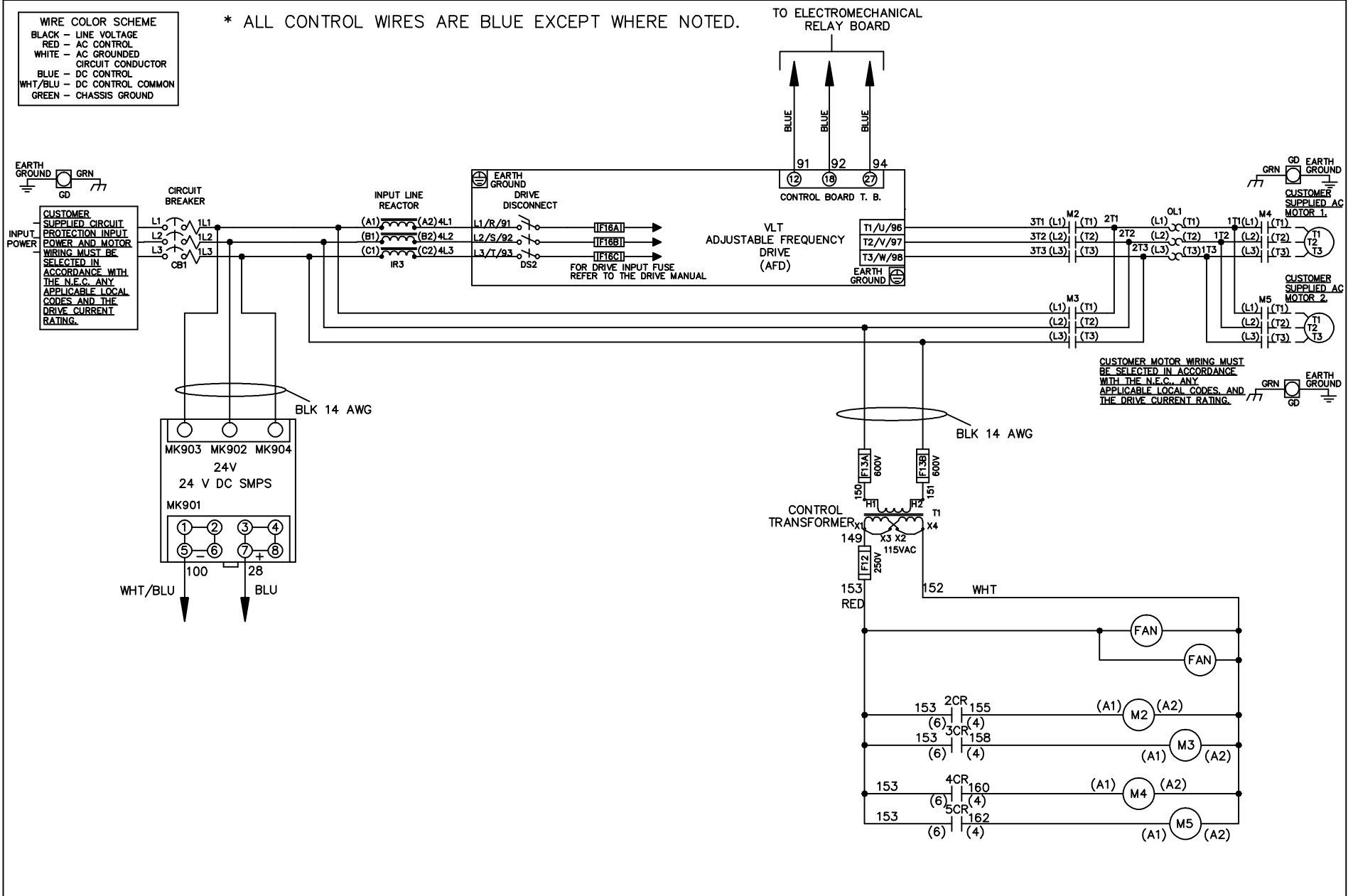


WIRE COLOR SCHEME	
BLACK	LINE VOLTAGE
RED	AC CONTROL
WHITE	AC GROUNDED
	CIRCUIT CONDUCTOR
BLUE	DC CONTROL
WHT/BLU	DC CONTROL COMMON
GREEN	CHASSIS GROUND

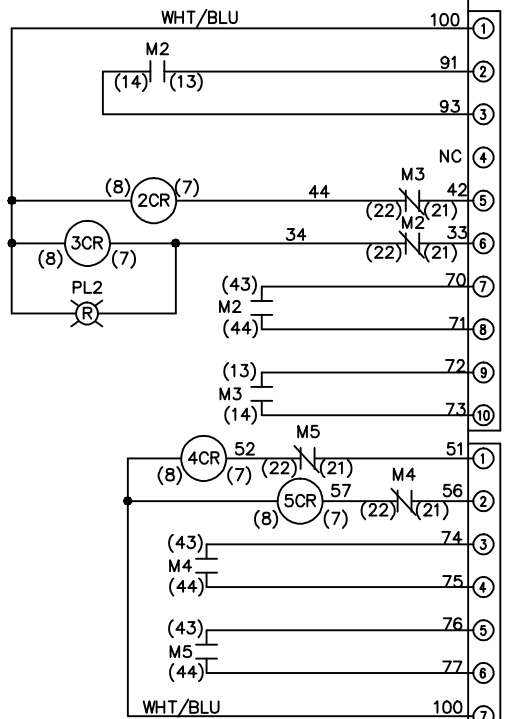
* ALL CONTROL WIRES ARE BLUE EXCEPT WHERE NOTED.



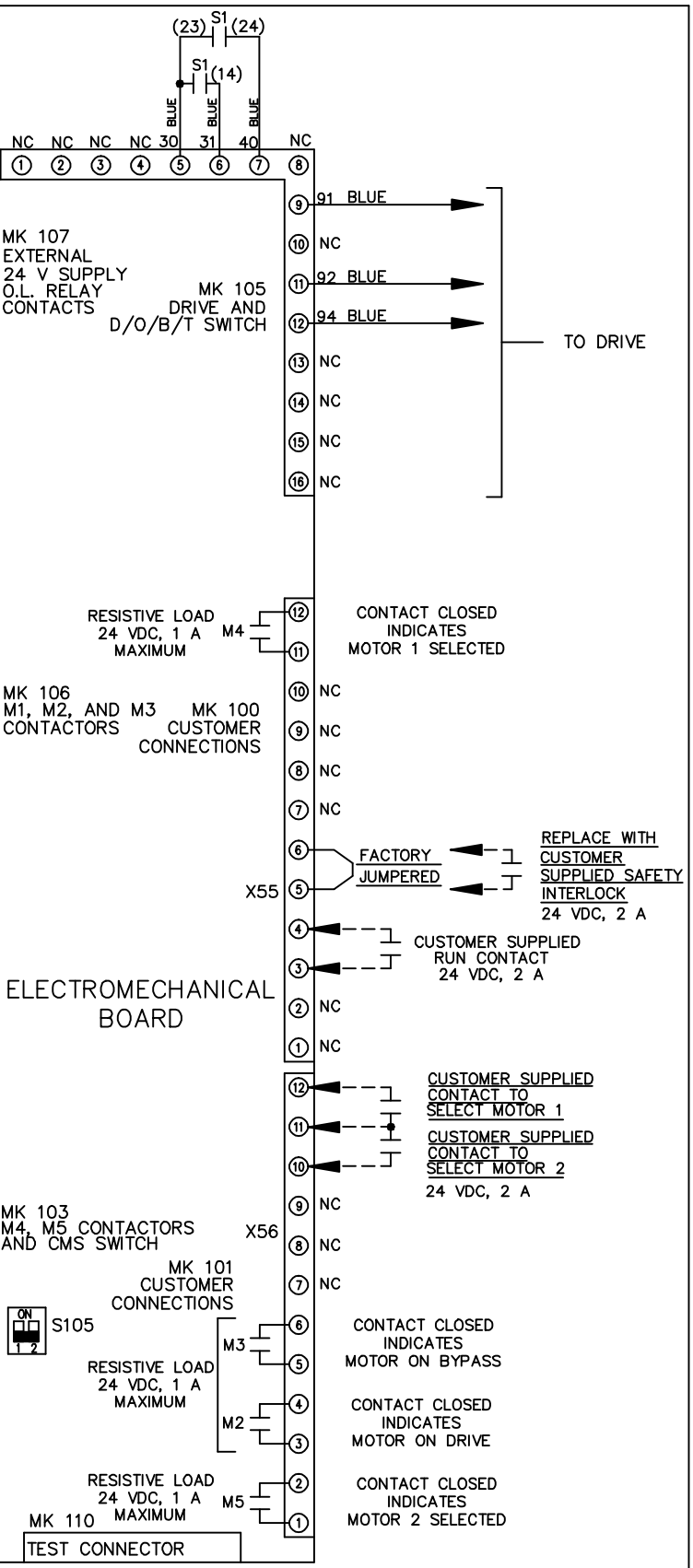
-NOTICE-			DRN JNW 2/14/07		NAME600 VOLT,2C,CB & DRIVE DISC ,DRIVE FUSE,EMB1,FRAME D1-D2 ,REACTOR,CMS			THE TRANE COMPANY A DIVISION OF AMERICAN STANDARD INC.	
THIS DRAWING IS PROPRIETARY AND SHALL NOT BE COPIED OR ITS CONTENTS DISCLOSED TO OUTSIDE PARTIES WITHOUT THE WRITTEN CONSENT OF THE TRANE COMPANY			APR		MODEL			PAGE 1 OF 2	
A	SP08061	10/08			SIZE A			DWG NO. 174U7678	
REV	ECN	DATE							

REV	ECN	DATE
A	SP08066	10/08

CONTACT SEQUENCE CHART FOR S1		POSITION
CONTACT	DRIVE	OFF BYPASS
13-14		X
23-24	X	



CONTACT SEQUENCE CHART FOR S2		POSITION
CONTACT	MOTOR 1	MOTOR 2
11-12	X	
13-14		X
21-22		X
23-24	X	

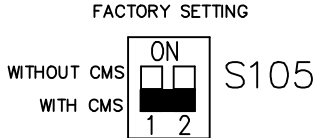


-NOTICE-
 THIS DRAWING IS PROPRIETARY AND SHALL NOT BE COPIED OR ITS CONTENTS DISCLOSED TO OUTSIDE PARTIES WITHOUT THE WRITTEN CONSENT OF THE TRANE COMPANY

DRN JNW
 2/14/07
 APR

NAME 600 VOLT, 2C, CB & DRIVE DISC
 , DRIVE FUSE, EMB1, FRAME D1-D2
 , REACTOR, CMS

MODEL
 PAGE 2 OF 2
 SIZE A
 DWG NO. 174U7678
 THE TRANE COMPANY
 A DIVISION OF
 AMERICAN STANDARD INC.



CUSTOMER CONNECTIONS X55, X56
 CLASS 2 POWER SOURCE
 REQUIRED FOR FIELD CONNECTION
 USE CLASS 1 CONDUCTORS
 CONDUCTOR SIZE 28-14 AWG