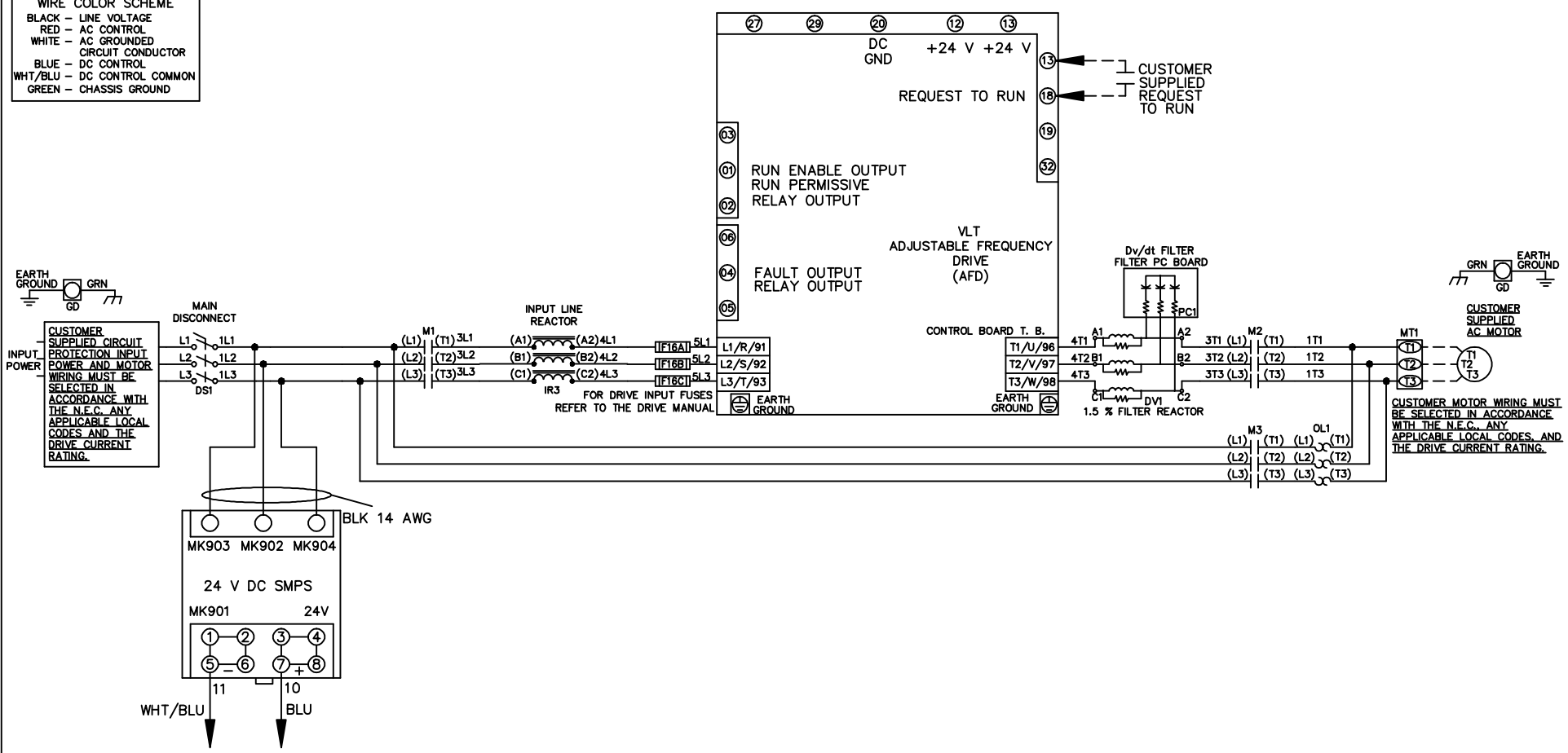


**WIRE COLOR SCHEME**  
 BLACK - LINE VOLTAGE  
 RED - AC CONTROL  
 WHITE - AC GROUNDED  
 WHITE - AC GROUNDED  
 CIRCUIT CONDUCTOR  
 BLUE - DC CONTROL  
 WHT/BLU - DC CONTROL COMMON  
 GREEN - CHASSIS GROUND



			-NOTICE-	DRN JNW 2/14/07	NAME 208-600VOLT,3C,MAIN DISC ,DRIVE FUSE,ECB,FRAME A2-A3 ,REACTOR & DVDT,SINGLE MTR		THE TRANE COMPANY A DIVISION OF AMERICAN STANDARD INC.	
A	SP08061	10/08	THIS DRAWING IS PROPRIETARY AND SHALL NOT BE COPIED OR ITS CONTENTS DISCLOSED TO OUTSIDE PARTIES WITHOUT THE WRITTEN CONSENT OF THE TRANE COMPANY	APR	MODEL	PAGE 1 OF 2	SIZE A	DWG NO. 174U7807
REV	ECN	DATE						

REV	ECN	DATE
A	SP08066	10/08

THIS DRAWING IS PROPRIETARY AND SHALL NOT BE COPIED OR ITS CONTENTS DISCLOSED TO OUTSIDE PARTIES WITHOUT THE WRITTEN CONSENT OF THE TRANE COMPANY

-NOTICE-

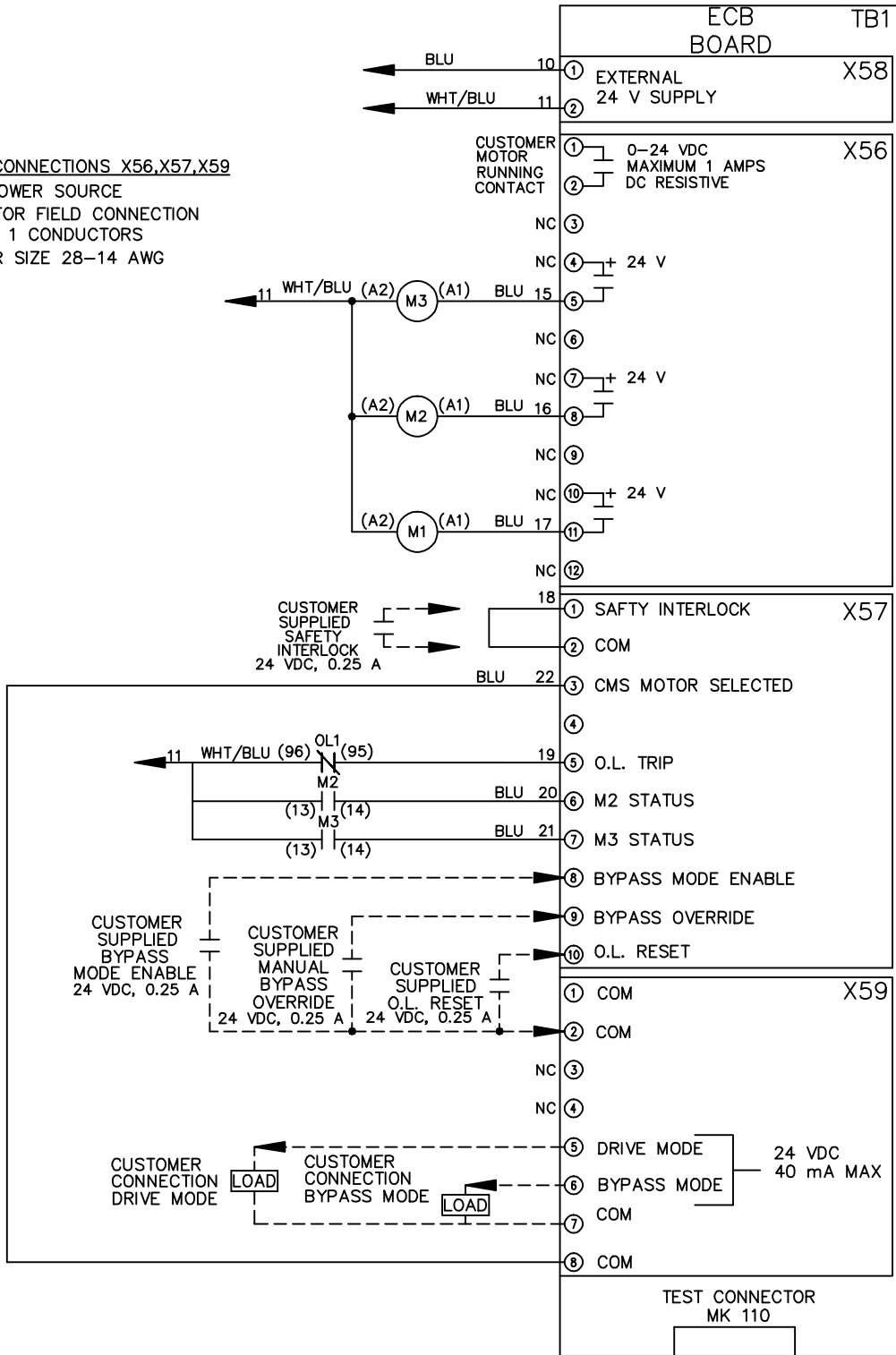
**CUSTOMER CONNECTIONS X56,X57,X59**  
 CLASS 2 POWER SOURCE  
 REQUIRED FOR FIELD CONNECTION  
 USE CLASS 1 CONDUCTORS  
 CONDUCTOR SIZE 28-14 AWG

DRN	JNW
2/14/07	
APR	

NAME 208-600VOLT, 3C, MAIN DISC  
 , DRIVE FUSE, ECB, FRAME A2-A3  
 , REACTOR & DVDVT, SINGLE MTR

PAGE	2	OF	2
SIZE	A		
DWG NO.	174U7807		

THE TRANE COMPANY  
 A DIVISION OF  
 AMERICAN STANDARD INC.



ECB BOARD TB1

① EXTERNAL 24 V SUPPLY X58  
 ②

① CUSTOMER MOTOR RUNNING CONTACT X56  
 ② 0-24 VDC MAXIMUM 1 AMPS DC RESISTIVE  
 NC ③

NC ④ + 24 V  
 ⑤

NC ⑥  
 NC ⑦ + 24 V  
 ⑧

NC ⑨  
 NC ⑩ + 24 V  
 ⑪

NC ⑫  
 ⑬

① SAFTY INTERLOCK X57  
 ② COM  
 ③ CMS MOTOR SELECTED  
 ④

⑤ O.L. TRIP  
 ⑥ M2 STATUS  
 ⑦ M3 STATUS  
 ⑧ BYPASS MODE ENABLE  
 ⑨ BYPASS OVERRIDE  
 ⑩ O.L. RESET

① COM X59  
 ② COM  
 NC ③  
 NC ④

⑤ DRIVE MODE  
 ⑥ BYPASS MODE  
 ⑦ COM  
 ⑧ COM

TEST CONNECTOR MK 110