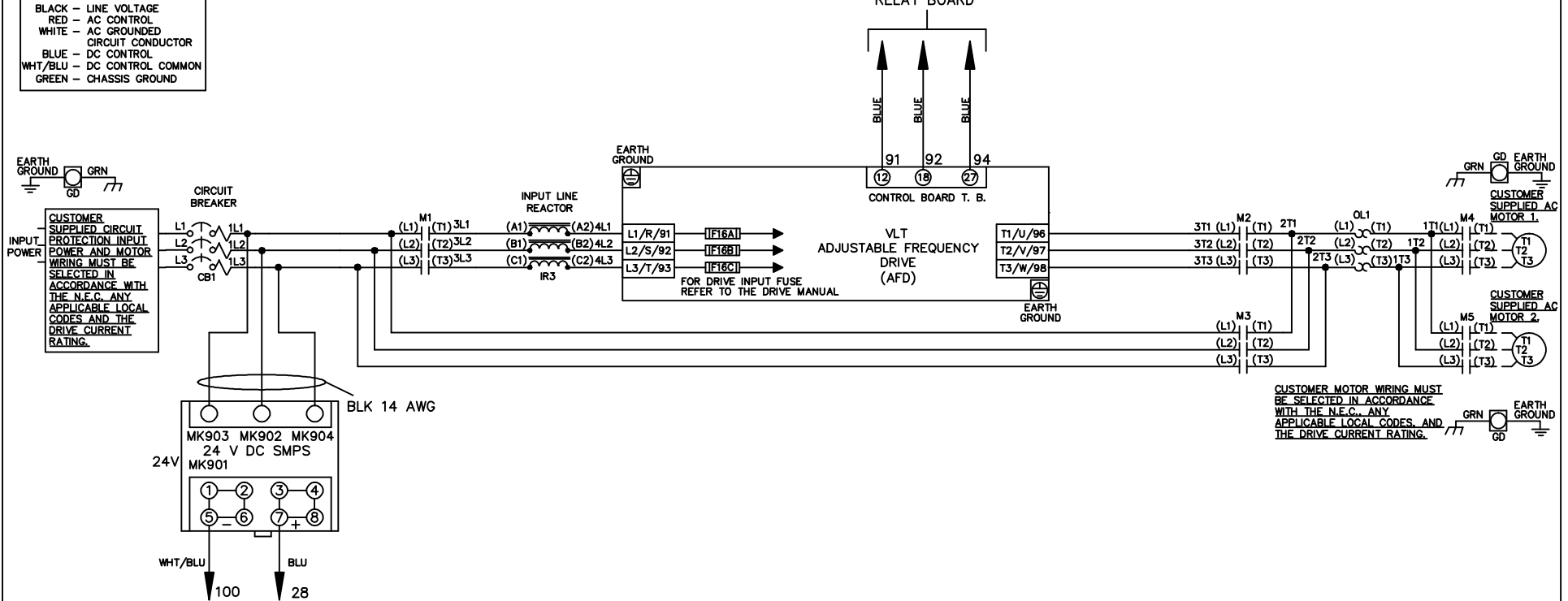


WIRE COLOR SCHEME
 BLACK - LINE VOLTAGE
 RED - AC CONTROL
 WHITE - AC GROUNDED
 CIRCUIT CONDUCTOR
 BLUE - DC CONTROL
 WHT/BLU - DC CONTROL COMMON
 GREEN - CHASSIS GROUND

* ALL CONTROL WIRES ARE BLUE EXCEPT WHERE NOTED. TO ELECTROMECHANICAL RELAY BOARD



| | | | | | | | | |
|-----|---------|-------|---|--------------------|---|-------------|--|------------------|
| | | | -NOTICE- | DRN JNW 2/14/07 | NAME 208-600VOLT, 3C, CB , DRIVE FUSE, EMB1, FRAME A5-B1 , REACTOR, CMS | | THE TRANE COMPANY A DIVISION OF AMERICAN STANDARD INC. | |
| A | SP08061 | 10/08 | THIS DRAWING IS PROPRIETARY AND SHALL NOT BE COPIED OR ITS CONTENTS DISCLOSED TO OUTSIDE PARTIES WITHOUT THE WRITTEN CONSENT OF THE TRANE COMPANY | APR | MODEL | PAGE 1 OF 2 | SIZE A | DWG NO. 174U7857 |
| REV | ECN | DATE | | | | | | |

| | | |
|-----|---------|-------|
| REV | ECON | DATE |
| A | SP08066 | 10/08 |

CONTACT SEQUENCE CHART FOR S1
X INDICATES CONTACT CLOSED

| CONTACT POSITION | DRIVE | OFF | BYPASS | TEST |
|------------------|-------|-----|--------|------|
| 1-2 | X | | | X |
| 3-4 | | | X | X |
| 5-6 | X | | | X |
| 7-8 | | | | X |

THIS DRAWING IS PROPRIETARY AND SHALL NOT BE COPIED OR ITS CONTENTS DISCLOSED TO OUTSIDE PARTIES WITHOUT THE WRITTEN CONSENT OF THE TRANE COMPANY

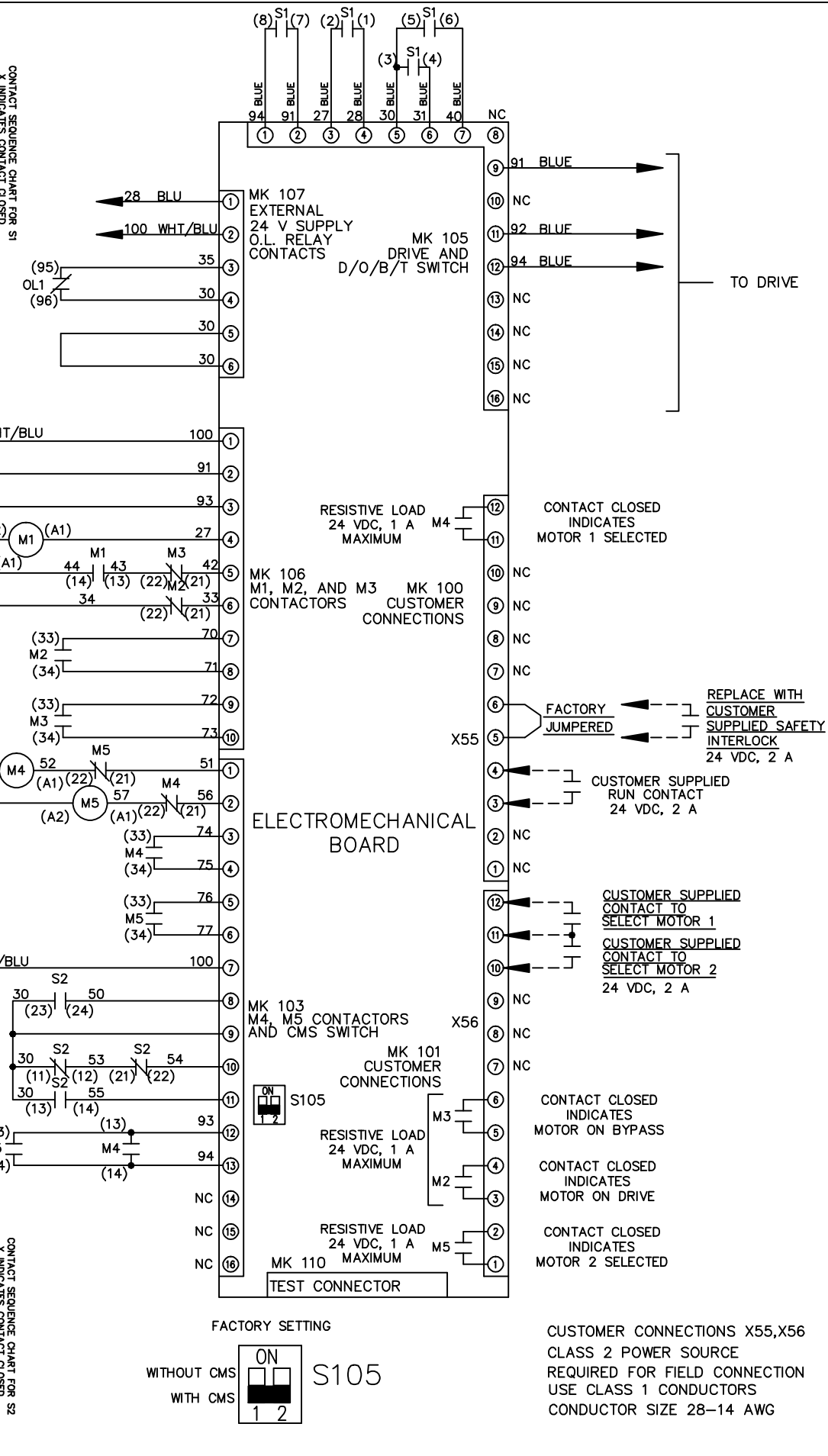
DRN JNW
2/14/07

NAME 208-600VOLT, 3C, CB
, DRIVE FUSE, EMB1, FRAME A5-B1
, REACTOR, CMS

MODEL
PAGE 2 OF 2
SIZE A
DWG NO. 174U7857

CONTACT SEQUENCE CHART FOR S2
X INDICATES CONTACT CLOSED

| CONTACT POSITION | MOTOR 1 | AUTO | MOTOR 2 |
|------------------|---------|------|---------|
| 11-12 | X | X | |
| 13-14 | | | X |
| 21-22 | X | | X |
| 23-24 | X | | |



NOTICE -

THE TRANE COMPANY
A DIVISION OF
AMERICAN STANDARD INC.