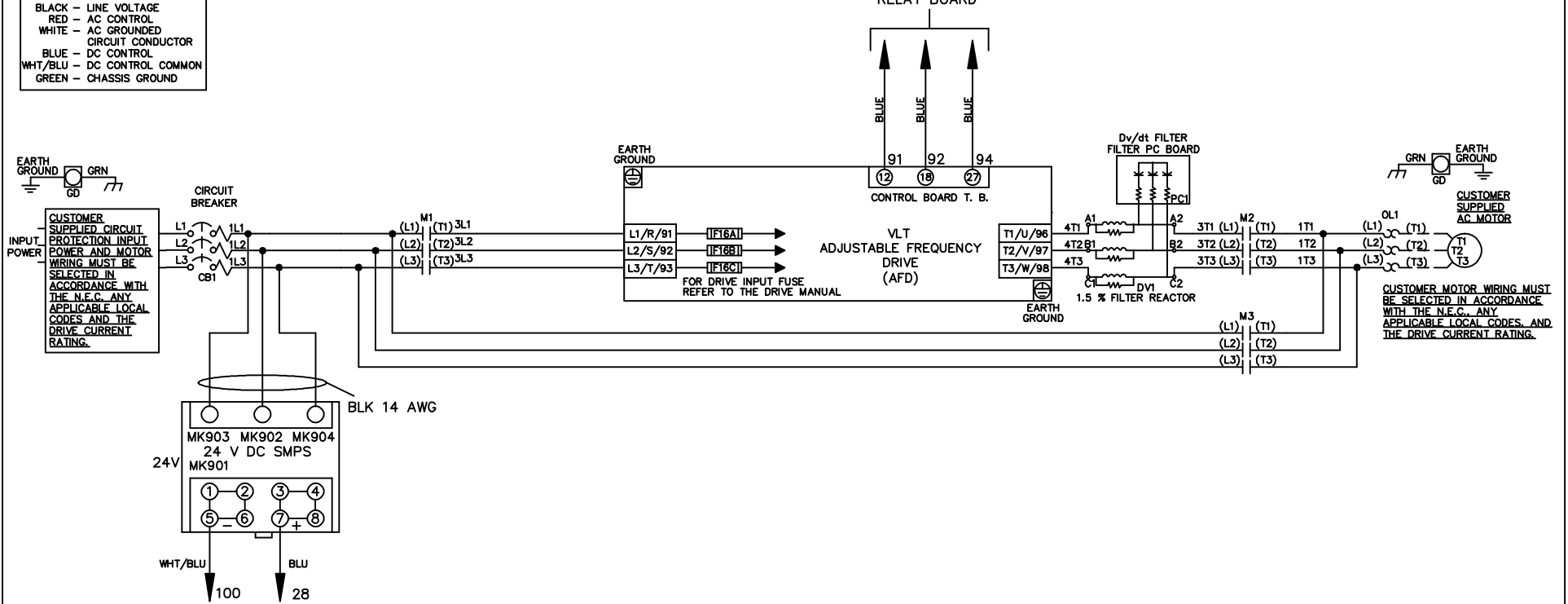


WIRE COLOR SCHEME
 BLACK - LINE VOLTAGE
 RED - AC CONTROL
 WHITE - AC GROUNDED
 CIRCUIT CONDUCTOR
 BLUE - DC CONTROL
 WHT/BLU - DC CONTROL COMMON
 GREEN - CHASSIS GROUND

* ALL CONTROL WIRES ARE BLUE EXCEPT WHERE NOTED. TO ELECTROMECHANICAL RELAY BOARD

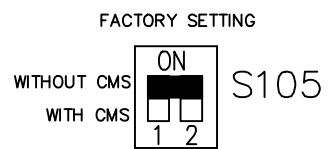
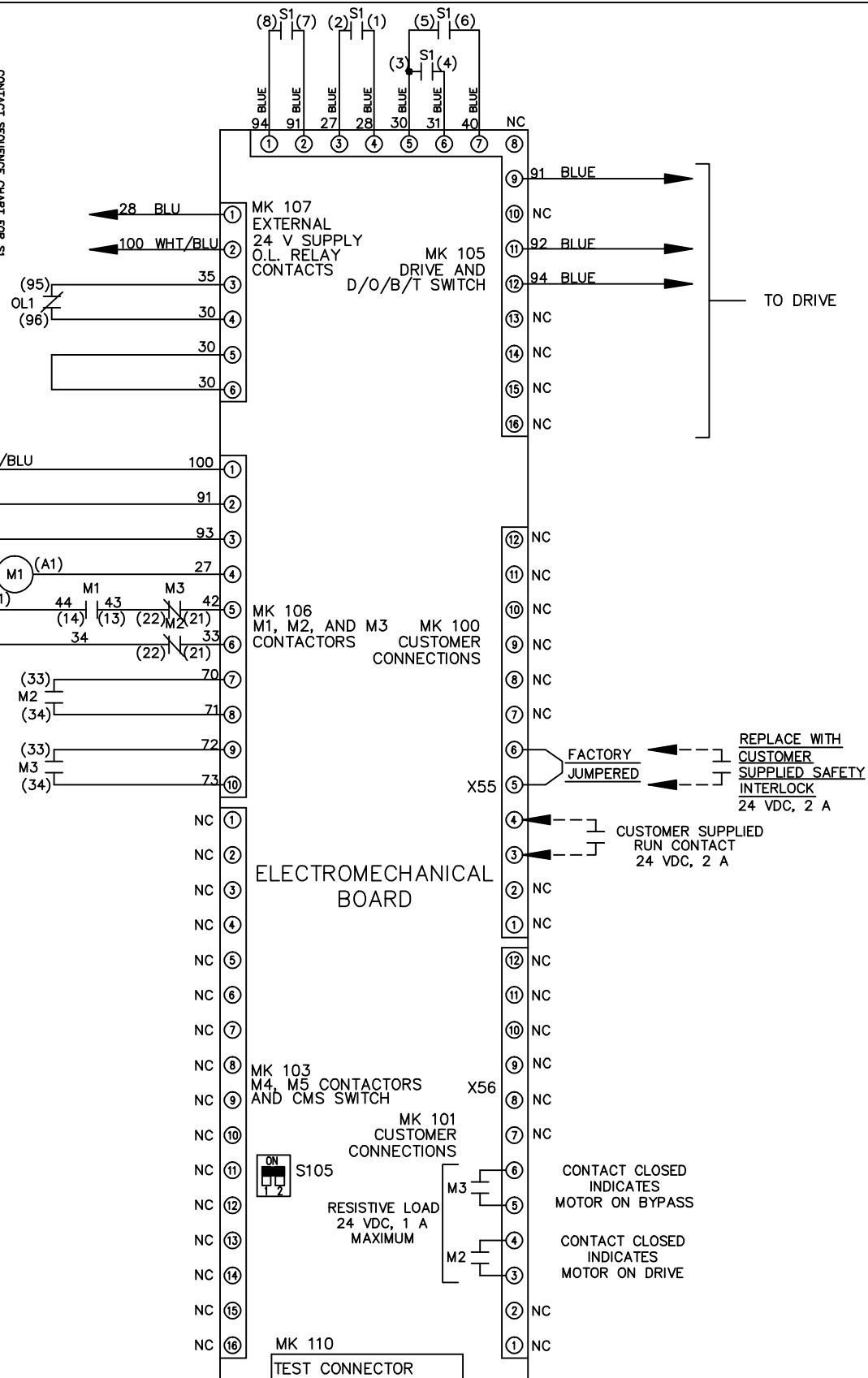


			-NOTICE-	DRN JNW	NAME 208-600VOLT, 3C, CB		THE TRANE COMPANY	
			THIS DRAWING IS PROPRIETARY AND SHALL NOT BE COPIED OR ITS CONTENTS DISCLOSED TO OUTSIDE PARTIES WITHOUT THE WRITTEN CONSENT OF THE TRANE COMPANY	2/14/07	,DRIVE FUSE, EMB1, FRAME A5-B1		A DIVISION OF AMERICAN STANDARD INC.	
A	SP08061	10/08		APR	MODEL	PAGE 1 OF 2	SIZE A	DWG NO. 174U7885
REV	ECN	DATE						

REV	ECON	DATE	
A	SP08066	10/08	
THIS DRAWING IS PROPRIETARY AND SHALL NOT BE COPIED OR ITS CONTENTS DISCLOSED TO OUTSIDE PARTIES WITHOUT THE WRITTEN CONSENT OF THE TRANE COMPANY			
DRN	JNW	2/14/07	
APR			
MODEL	NAME 208-600VOLT, 3C, CB		
PAGE 2 OF 2	, DRIVE FUSE, EMB1, FRAME A5-B1		
SIZE A	, DVD1, SINGLE MTR		
DWG NO. 174U7885	THE TRANE COMPANY A DIVISION OF AMERICAN STANDARD INC.		

CONTACT SEQUENCE CHART FOR S1
X INDICATES CONTACT CLOSED

CONTACT	POSITION	DRIVE	OFF	BYPASS	TEST
1-2		X			X
3-4				X	X
5-6		X			X
7-8					



CUSTOMER CONNECTIONS X55, X56
 CLASS 2 POWER SOURCE
 REQUIRED FOR FIELD CONNECTION
 USE CLASS 1 CONDUCTORS
 CONDUCTOR SIZE 28-14 AWG