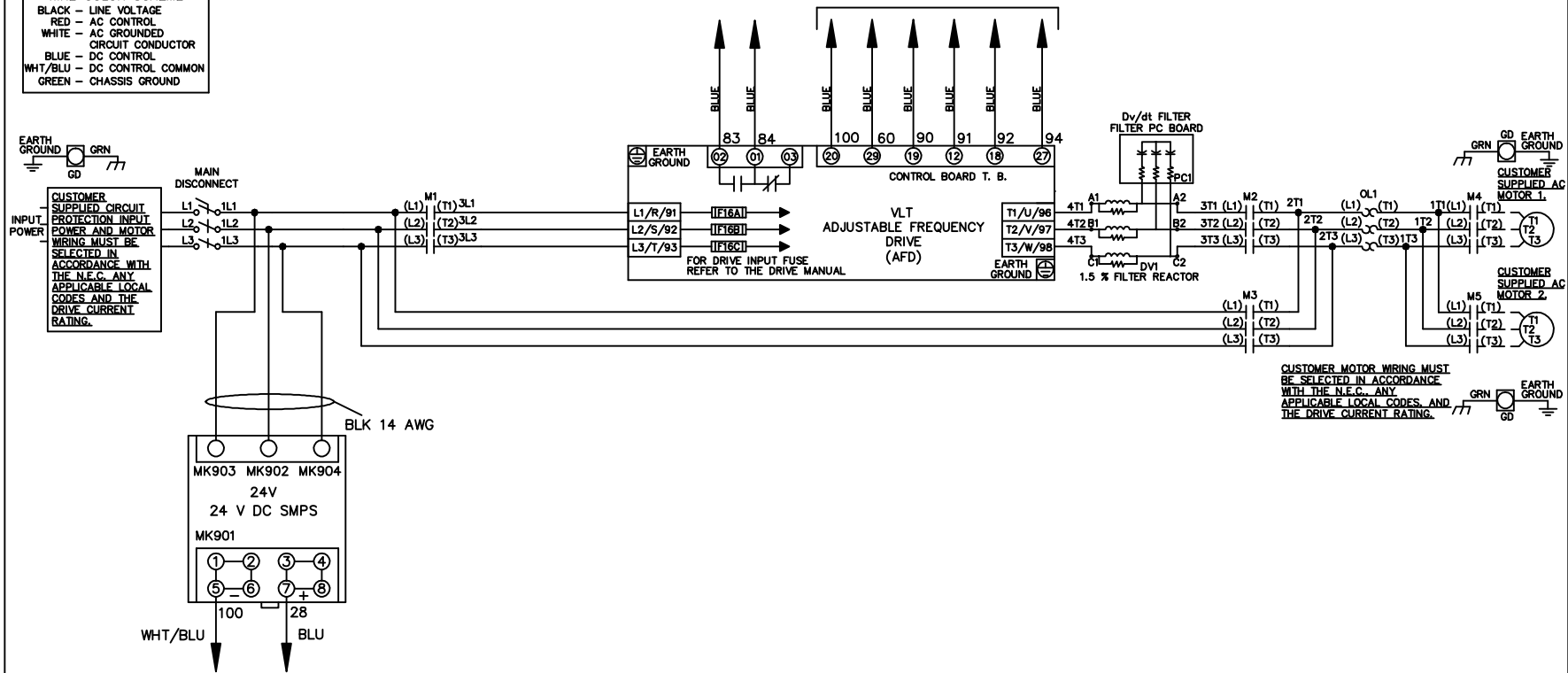


* ALL CONTROL WIRES ARE BLUE EXCEPT WHERE NOTED. TO ELECTROMECHANICAL RELAY BOARD

WIRE COLOR SCHEME	
BLACK	- LINE VOLTAGE
RED	- AC CONTROL
WHITE	- AC GROUNDED
	CIRCUIT CONDUCTOR
BLUE	- DC CONTROL
WHT/BLU	- DC CONTROL COMMON
GREEN	- CHASSIS GROUND



CUSTOMER MOTOR WIRING MUST BE SELECTED IN ACCORDANCE WITH THE N.E.C., ANY APPLICABLE LOCAL CODES, AND THE DRIVE CURRENT RATING.

A	SP08061	10/08
REV	ECN	DATE

-NOTICE-
THIS DRAWING IS PROPRIETARY AND SHALL NOT BE COPIED OR ITS CONTENTS DISCLOSED TO OUTSIDE PARTIES WITHOUT THE WRITTEN CONSENT OF THE TRANE COMPANY

DRN JNW
2/14/07
APR

NAME 208-600VOLT,3C,MAIN DISC
,DRIVE FUSE,EMB2,FRAME A5-B1
,DVDT,CMS
MODEL

THE TRANE COMPANY
A DIVISION OF
AMERICAN STANDARD INC.

REV	ECN	DATE	
A	SP08066	10/08	

-NOTICE-

THIS DRAWING IS PROPRIETARY AND SHALL NOT BE COPIED OR ITS CONTENTS DISCLOSED TO OUTSIDE PARTIES WITHOUT THE WRITTEN CONSENT OF THE TRANE COMPANY

DRN	JNW	APR
2/14/07		

NAME 208-600VOLT, 3C, MAIN DISC
DRIVE FUSE, EMB2, FRAME A5-B1
, DVDI, CMS

PAGE 2 OF 2

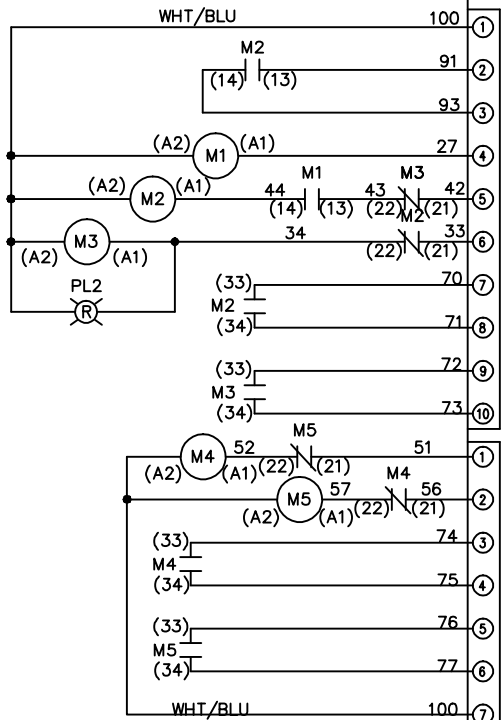
SIZE A

DWG NO. 174U7900

THE TRANE COMPANY
A DIVISION OF
AMERICAN STANDARD INC.

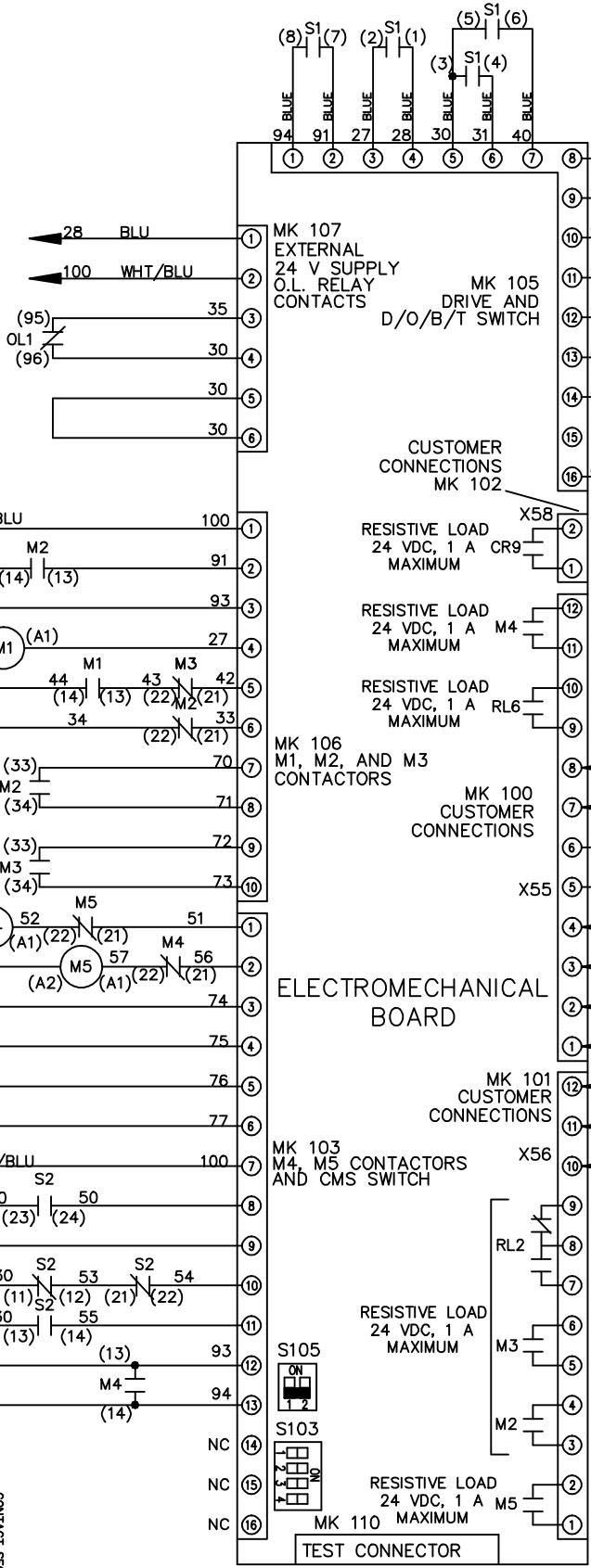
CONTACT SEQUENCE CHART FOR S1
X INDICATES CONTACT CLOSED

CONTACT	POSITION	DRIVE	OFF	BYPASS	TEST
1-2		X			X
3-4				X	X
5-6		X			
7-8					X



CONTACT SEQUENCE CHART FOR S2
X INDICATES CONTACT CLOSED

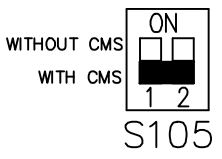
CONTACT	POSITION	MOTOR 1	MOTOR 2
11-12		X	X
13-14			X
21-22		X	X
23-24		X	



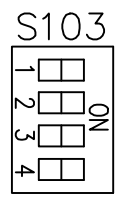
CUSTOMER CONNECTIONS X55, X56, X58
CLASS 2 POWER SOURCE
REQUIRED FOR FIELD CONNECTION
USE CLASS 1 CONDUCTORS
CONDUCTOR SIZE 28-14 AWG

ELECTROMECHANICAL BOARD

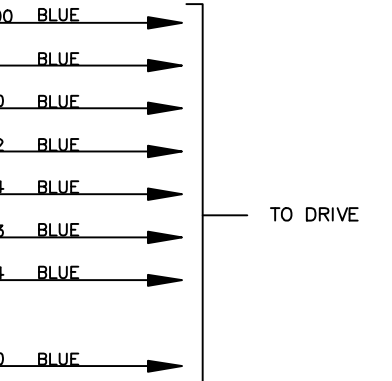
FACTORY SETTING



CUSTOMER SETTING



- AUTOMATIC BYPASS TIME SELECT
- ONLY # 1 ON 30 SECONDS
 - ONLY # 2 ON 60 SEC.
 - ONLY # 3 ON 300 SEC
 - ALL ON 15 SEC.
 - ALL OFF NO AUTO BYPASS (FACTORY DEFAULT)



- CONTACT CLOSED INDICATES REQUEST TO RUN
- CONTACT CLOSED INDICATES MOTOR 1 SELECTED
- CONTACT CLOSED INDICATES FIREMANS OVERRIDE
- CUSTOMER SUPPLIED FIREMANS OVERRIDE CONTACT 24 VDC, 2 A
- REPLACE WITH CUSTOMER SUPPLIED SAFETY INTERLOCK 24 VDC, 2 A
- CUSTOMER SUPPLIED RUN CONTACT 24 VDC, 2 A
- CUSTOMER SUPPLIED DAMPER END SWITCH RUN CONTACT 24 VDC, 2 A
- CUSTOMER SUPPLIED CONTACT TO SELECT MOTOR 1
- CUSTOMER SUPPLIED CONTACT TO SELECT MOTOR 2

- CONTACTS SHOWN IN FAULT POSITION
- CONTACT CLOSED INDICATES MOTOR ON BYPASS
- CONTACT CLOSED INDICATES MOTOR ON DRIVE
- CONTACT CLOSED INDICATES MOTOR 2 SELECTED