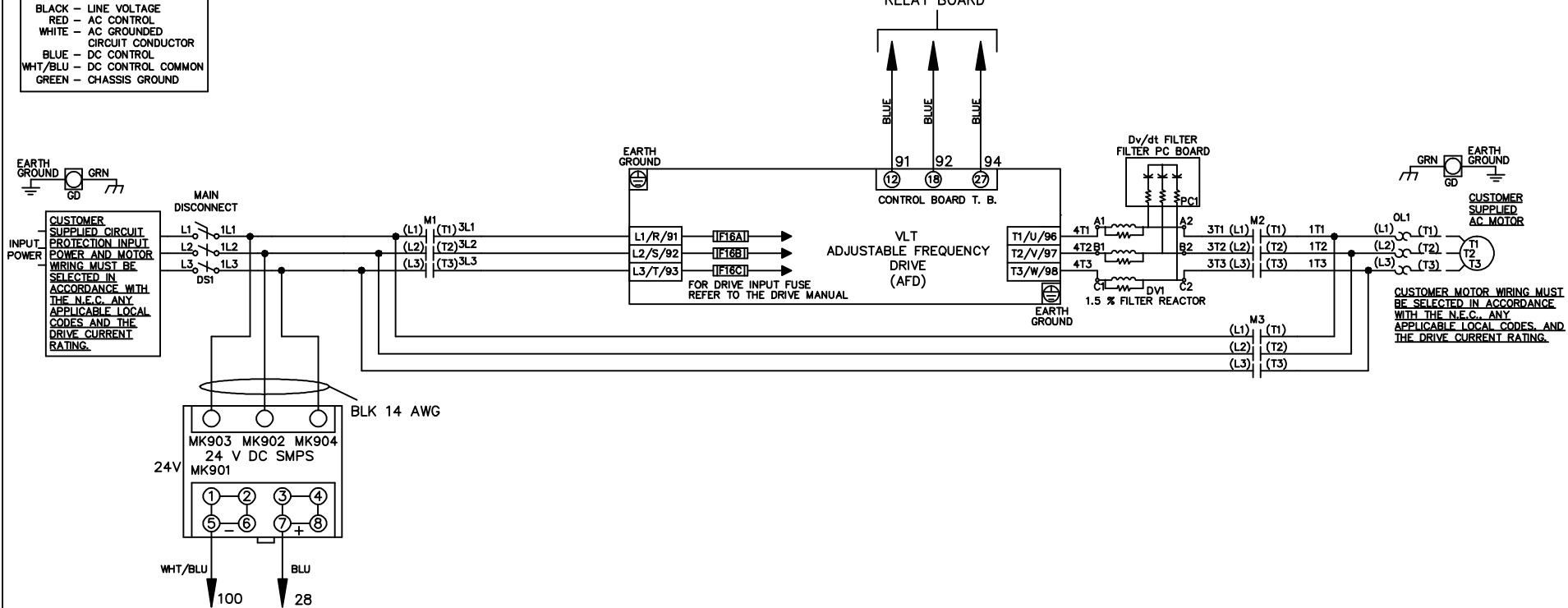


**WIRE COLOR SCHEME**  
 BLACK - LINE VOLTAGE  
 RED - AC CONTROL  
 WHITE - AC GROUNDED  
 CIRCUIT CONDUCTOR  
 BLUE - DC CONTROL  
 WHT/BLU - DC CONTROL COMMON  
 GREEN - CHASSIS GROUND

\* ALL CONTROL WIRES ARE BLUE EXCEPT WHERE NOTED. TO ELECTROMECHANICAL RELAY BOARD



A	SP08061	10/08
REV	ECN	DATE

-NOTICE-  
 THIS DRAWING IS PROPRIETARY AND SHALL NOT BE COPIED OR ITS CONTENTS DISCLOSED TO OUTSIDE PARTIES WITHOUT THE WRITTEN CONSENT OF THE TRANE COMPANY

DRN JNW  
 2/14/07  
 APR

NAME 208-600VOLT, 3C, MAIN DISC  
 ,DRIVE FUSE, EMB1, FRAME A5-B1  
 ,DVDT, SINGLE MTR

MODEL

PAGE 1 OF 2

SIZE A

DWG NO. 174U7913

**THE TRANE COMPANY**  
 A DIVISION OF  
 AMERICAN STANDARD INC.

REV	ECON	DATE	
A	SP08066	10/08	
THIS DRAWING IS PROPRIETARY AND SHALL NOT BE COPIED OR ITS CONTENTS DISCLOSED TO OUTSIDE PARTIES WITHOUT THE WRITTEN CONSENT OF THE TRANE COMPANY			
DRN	JNW	2/14/07	
APR			
MODEL	NAME 208-600VOLT, 3C, MAIN DISC		
	, DRIVE FUSE, EMB1, FRAME A5-B1		
	, DVDI, SINGLE MTR		
PAGE	2 OF 2	SIZE	A
DWG	NO.	174U7913	
THE TRANE COMPANY A DIVISION OF AMERICAN STANDARD INC.			

