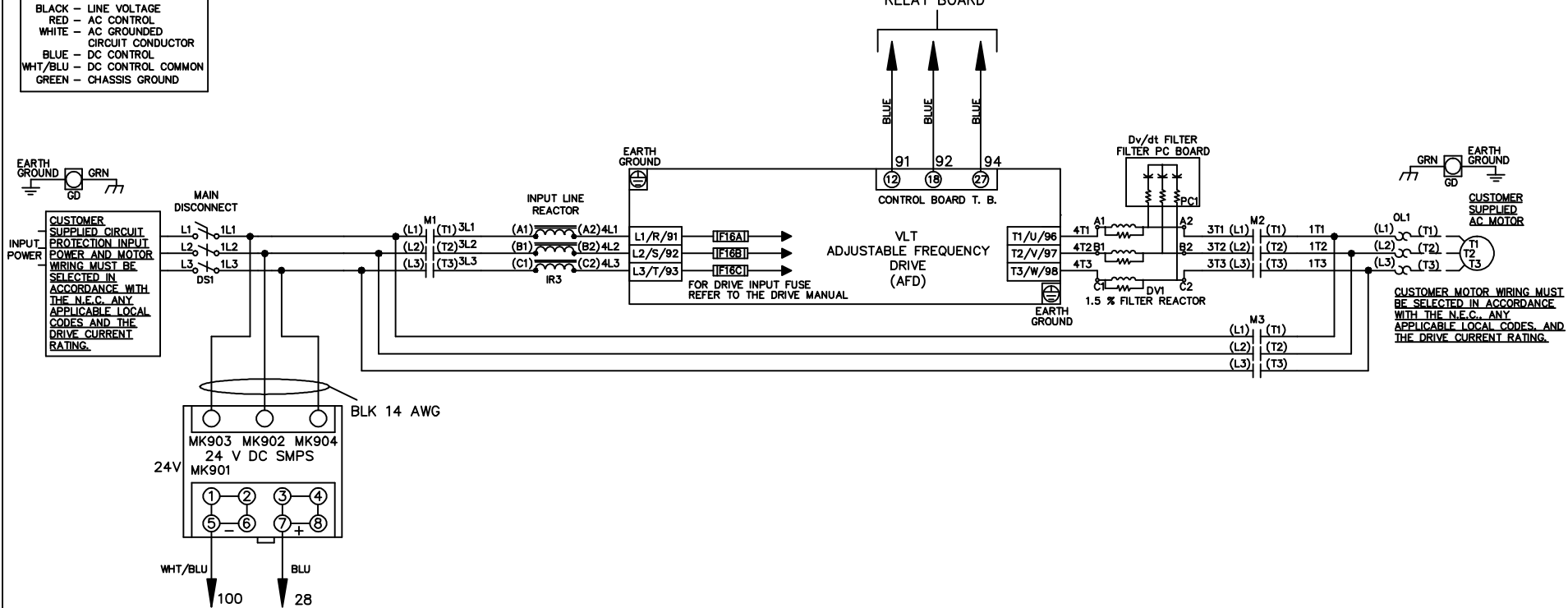


WIRE COLOR SCHEME
 BLACK - LINE VOLTAGE
 RED - AC CONTROL
 WHITE - AC GROUNDED
 CIRCUIT CONDUCTOR
 BLUE - DC CONTROL
 WHT/BLU - DC CONTROL COMMON
 GREEN - CHASSIS GROUND

* ALL CONTROL WIRES ARE BLUE EXCEPT WHERE NOTED. TO ELECTROMECHANICAL RELAY BOARD



-NOTICE-

THIS DRAWING IS PROPRIETARY AND SHALL NOT BE COPIED OR ITS CONTENTS DISCLOSED TO OUTSIDE PARTIES WITHOUT THE WRITTEN CONSENT OF THE TRANE COMPANY

DRN JNW
2/14/07

NAME 208-600VOLT, 3C, MAIN DISC
 ,DRIVE FUSE, EMB1, FRAME A5-B1
 ,REACTOR & DVDT, SINGLE MTR

THE TRANE COMPANY
 A DIVISION OF
 AMERICAN STANDARD INC.

A	SP08061	10/08
REV	ECN	DATE

APR

MODEL

PAGE 1 OF 2

SIZE A

DWG NO.

174U7917

REV	ECON	DATE							
A	SP08066	10/08							
<p style="text-align: center;">- NOTICE -</p> <p style="text-align: center;">THIS DRAWING IS PROPRIETARY AND SHALL NOT BE COPIED OR ITS CONTENTS DISCLOSED TO OUTSIDE PARTIES WITHOUT THE WRITTEN CONSENT OF THE TRANE COMPANY</p>									
			DRN	JNW	2/14/07				
			APR						
			MODEL	NAME 208-600VOLT, 3C, MAIN DISC					
				, DRIVE FUSE, EMB1, FRAME A5-B1					
				, REACTOR & DVDI, SINGLE MTR					
			PAGE	2	OF	2			
			SIZE	A					
			DWG NO.	174U7917					
				THE TRANE COMPANY					
				A DIVISION OF					
				AMERICAN STANDARD INC.					

