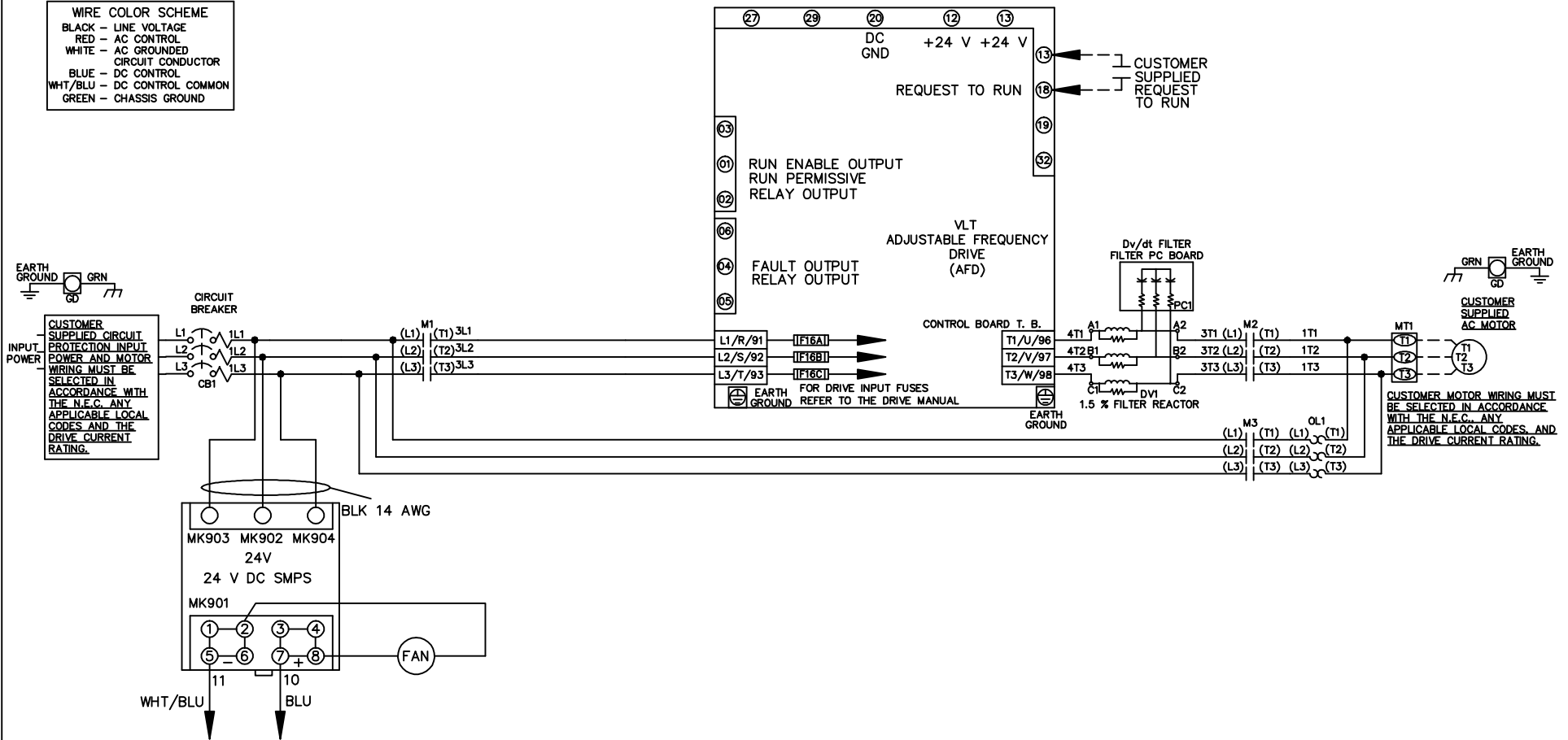


WIRE COLOR SCHEME
 BLACK - LINE VOLTAGE
 RED - AC CONTROL
 WHITE - AC GROUNDED
 CIRCUIT CONDUCTOR
 BLUE - DC CONTROL
 WHT/BLU - DC CONTROL COMMON
 GREEN - CHASSIS GROUND



			-NOTICE-		DRN JNW 2/14/07		NAME 208-600VOLT,3C,CB ,DRIVE FUSE,ECB,FRAME C1N12 ,DVDT,SINGLE MTR		THE TRANE COMPANY A DIVISION OF AMERICAN STANDARD INC.		
A	SP08061	10/08	THIS DRAWING IS PROPRIETARY AND SHALL NOT BE COPIED OR ITS CONTENTS DISCLOSED TO OUTSIDE PARTIES WITHOUT THE WRITTEN CONSENT OF THE TRANE COMPANY			APR	MODEL	PAGE 1 OF 2	SIZE A	DWG NO.	174U7991
REV	ECN	DATE									

REV	ECN	DATE
A	SP08066	10/08

THIS DRAWING IS PROPRIETARY AND SHALL NOT BE COPIED OR ITS CONTENTS DISCLOSED TO OUTSIDE PARTIES WITHOUT THE WRITTEN CONSENT OF THE TRANE COMPANY

DRN JNW
 2/14/07
 APR

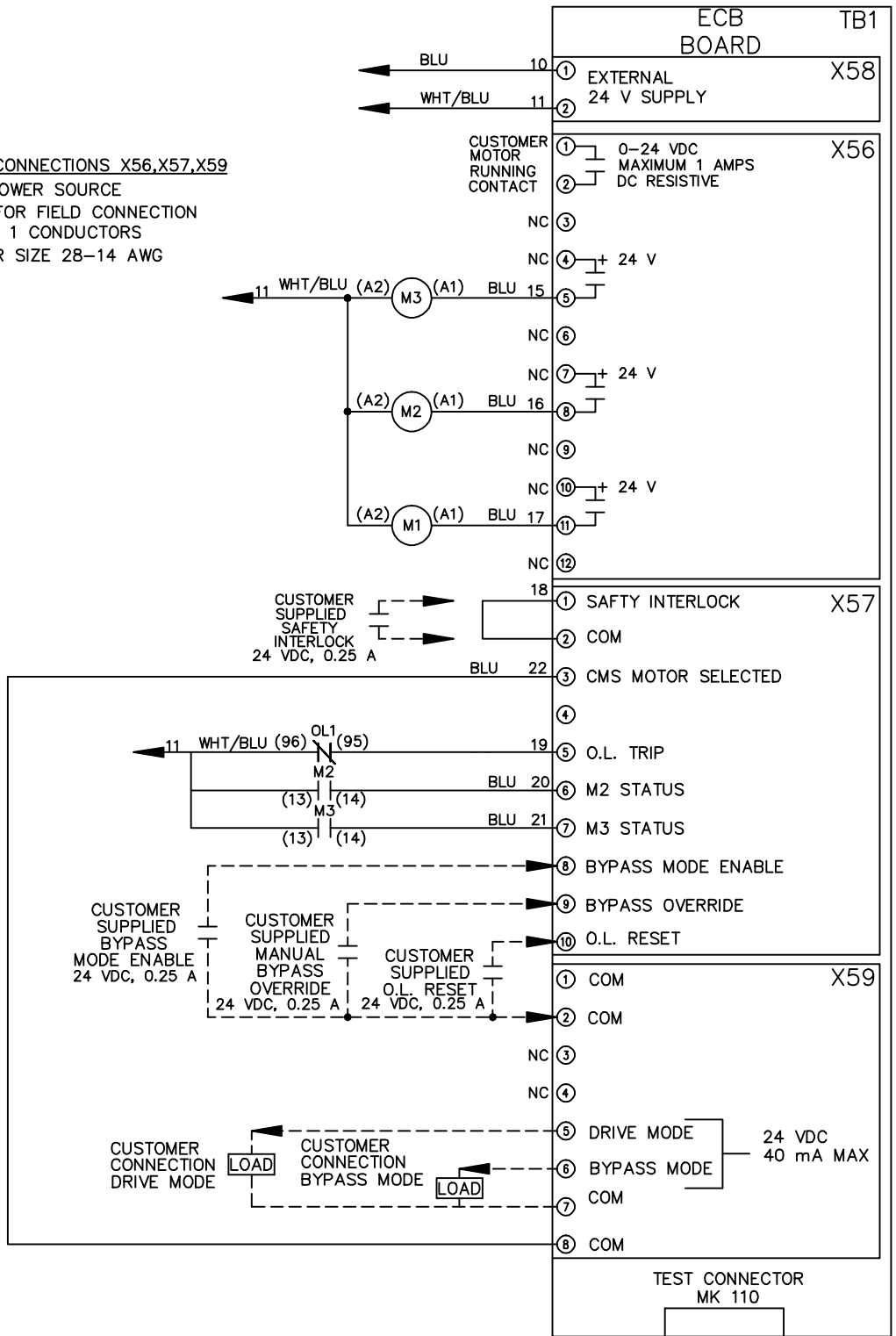
NAME 208-600VOLT,3C,CB
 ,DRIVE FUSE,ECB,FRAME C1N12
 ,DVDT,SINGLE MTR

MODEL
 PAGE 2 OF 2
 SIZE A
 DWG NO. 174U7991

THE TRANE COMPANY
 A DIVISION OF
 AMERICAN STANDARD INC.

CUSTOMER CONNECTIONS X56,X57,X59
 CLASS 2 POWER SOURCE
 REQUIRED FOR FIELD CONNECTION
 USE CLASS 1 CONDUCTORS
 CONDUCTOR SIZE 28-14 AWG

- NOTICE -



ECB BOARD TB1

① EXTERNAL 24 V SUPPLY
 ②

① CUSTOMER MOTOR RUNNING CONTACT
 ② 0-24 VDC MAXIMUM 1 AMPS DC RESISTIVE
 NC ③

NC ④ + 24 V

NC ⑤ + 24 V

NC ⑥ + 24 V

NC ⑦ + 24 V

NC ⑧ + 24 V

NC ⑨

NC ⑩

① SAFETY INTERLOCK X57

② COM

③ CMS MOTOR SELECTED

④

⑤ O.L. TRIP

⑥ M2 STATUS

⑦ M3 STATUS

⑧ BYPASS MODE ENABLE

⑨ BYPASS OVERRIDE

⑩ O.L. RESET

① COM X59

② COM

NC ③

NC ④

⑤ DRIVE MODE 24 VDC 40 mA MAX

⑥ BYPASS MODE

⑦ COM

⑧ COM

TEST CONNECTOR MK 110