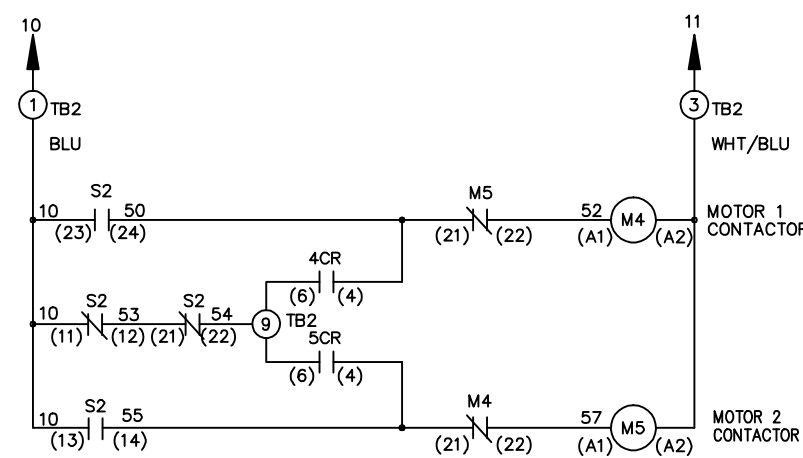
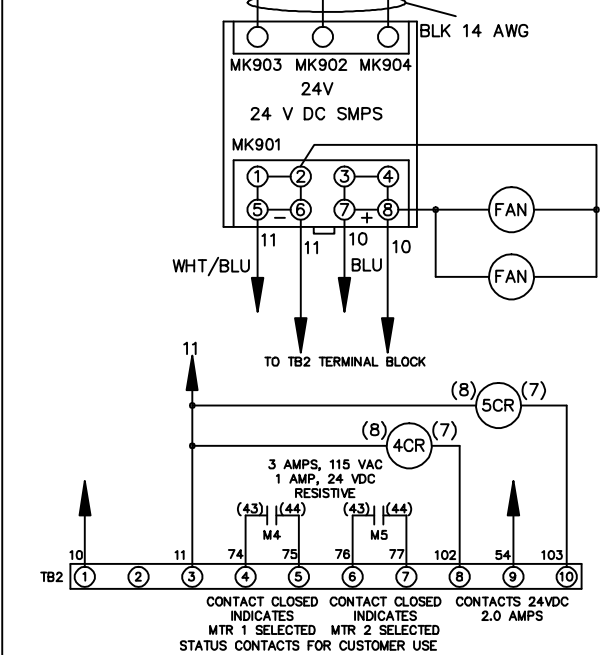
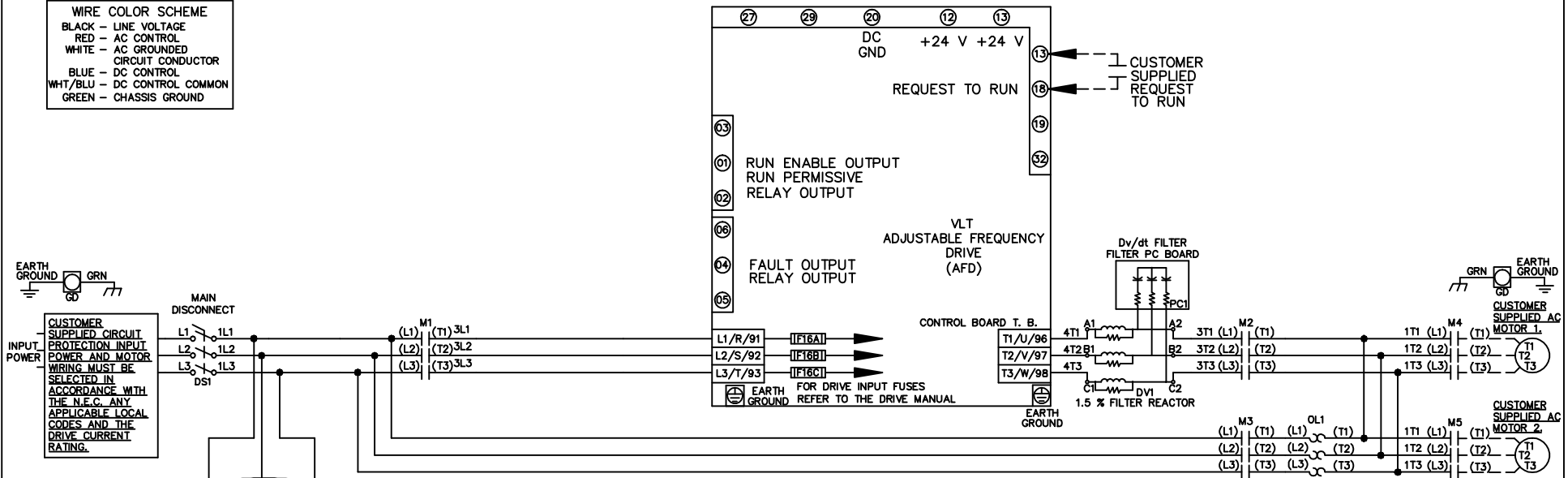


**WIRE COLOR SCHEME**  
 BLACK - LINE VOLTAGE  
 RED - AC CONTROL  
 WHITE - AC GROUNDED  
 CIRCUIT CONDUCTOR  
 BLUE - DC CONTROL  
 WHT/BLU - DC CONTROL COMMON  
 GREEN - CHASSIS GROUND



**CONTACT SEQUENCE CHART FOR S2**  
 X INDICATES CONTACT CLOSED

POSITION	MOTOR 1	AUTO	MOTOR 2
11-12	X	X	
13-14			X
21-22		X	X
23-24	X		

-NOTICE- THIS DRAWING IS PROPRIETARY AND SHALL NOT BE COPIED OR ITS CONTENTS DISCLOSED TO OUTSIDE PARTIES WITHOUT THE WRITTEN CONSENT OF THE TRANE COMPANY			DRN JNW 2/14/07	NAME 208-600VOLT, 3C, MAIN DISC , DRIVE FUSE, ECB, FRAME C1N12 , DVD, T, CMS			THE TRANE COMPANY A DIVISION OF AMERICAN STANDARD INC.		
A	SP08061	10/08	APR	MODEL	PAGE 1 OF 2	SIZE A	DWG NO.	174U8007	
REV	ECN	DATE							

REV	ECN	DATE
A	SP08066	10/08

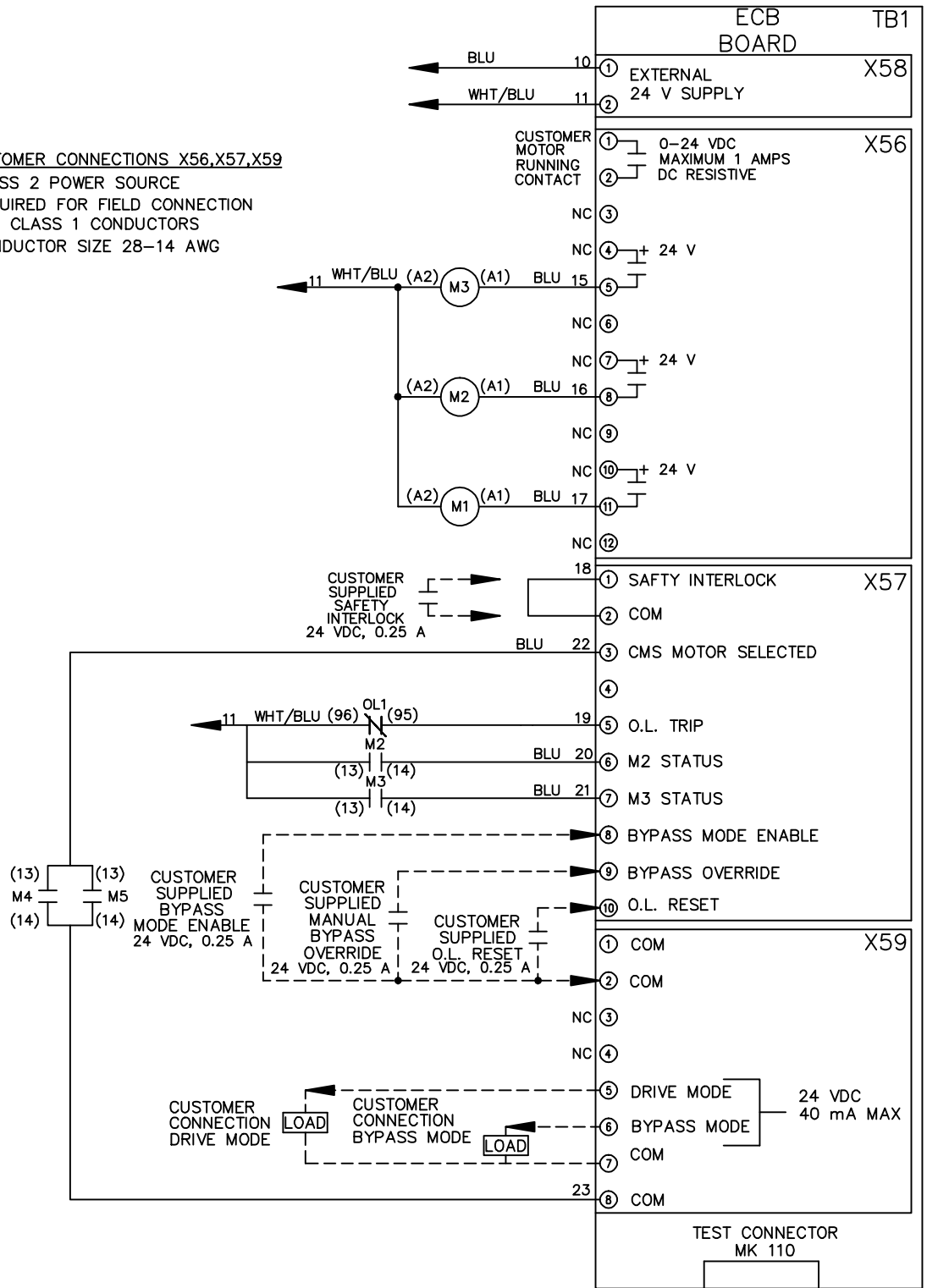
- NOTICE -  
 THIS DRAWING IS PROPRIETARY AND SHALL NOT BE COPIED OR ITS CONTENTS DISCLOSED TO OUTSIDE PARTIES WITHOUT THE WRITTEN CONSENT OF THE TRANE COMPANY

DRN JNW  
 2/14/07  
 APR

NAME 208-600VOLT, 3C, MAIN DISC  
 , DRIVE FUSE, ECB, FRAME C1N12  
 , DVDT, CMS

MODEL  
 PAGE 2 OF 2  
 SIZE A  
 DWG NO. 174U8007  
 THE TRANE COMPANY  
 A DIVISION OF  
 AMERICAN STANDARD INC.

**CUSTOMER CONNECTIONS X56, X57, X59**  
 CLASS 2 POWER SOURCE  
 REQUIRED FOR FIELD CONNECTION  
 USE CLASS 1 CONDUCTORS  
 CONDUCTOR SIZE 28-14 AWG



ECB BOARD TB1

① EXTERNAL X58  
 ② 24 V SUPPLY

① CUSTOMER MOTOR RUNNING CONTACT X56  
 ② 0-24 VDC MAXIMUM 1 AMPS DC RESISTIVE  
 NC ③

NC ④ + 24 V  
 NC ⑥

NC ⑦ + 24 V  
 NC ⑨

NC ⑩ + 24 V  
 NC ⑫

① SAFTY INTERLOCK X57  
 ② COM

③ CMS MOTOR SELECTED  
 ④

⑤ O.L. TRIP  
 ⑥ M2 STATUS  
 ⑦ M3 STATUS

⑧ BYPASS MODE ENABLE  
 ⑨ BYPASS OVERRIDE

⑩ O.L. RESET

① COM X59  
 ② COM

NC ③  
 NC ④

⑤ DRIVE MODE  
 ⑥ BYPASS MODE  
 ⑦ COM  
 ⑧ COM

TEST CONNECTOR MK 110