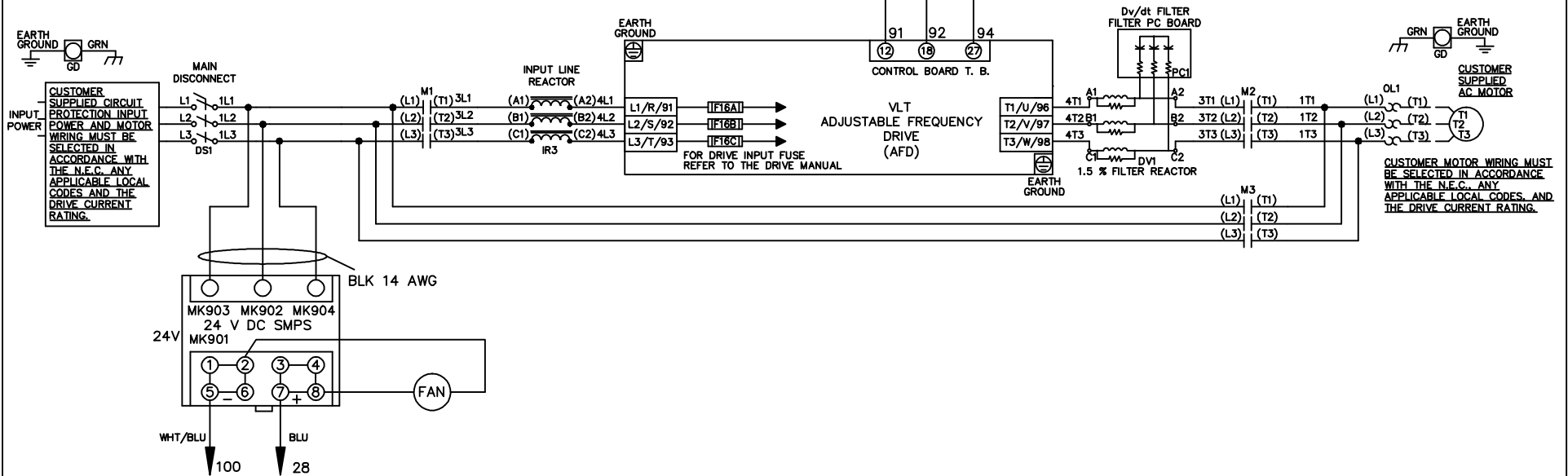


**WIRE COLOR SCHEME**  
 BLACK - LINE VOLTAGE  
 RED - AC CONTROL  
 WHITE - AC GROUNDED  
 WHITE - CIRCUIT CONDUCTOR  
 BLUE - DC CONTROL  
 WHT/BLU - DC CONTROL COMMON  
 GREEN - CHASSIS GROUND

\* ALL CONTROL WIRES ARE BLUE EXCEPT WHERE NOTED. TO ELECTROMECHANICAL RELAY BOARD



-NOTICE-

THIS DRAWING IS PROPRIETARY AND SHALL NOT BE COPIED OR ITS CONTENTS DISCLOSED TO OUTSIDE PARTIES WITHOUT THE WRITTEN CONSENT OF THE TRANE COMPANY

DRN JNW  
2/14/07

APR

NAME 208-600VOLT, 3C, MAIN DISC  
 ,DRIVE FUSE, EMB1, FRAME C1N12  
 ,REACTOR & DVDT, SINGLE MTR

MODEL

THE TRANE COMPANY  
 A DIVISION OF  
 AMERICAN STANDARD INC.

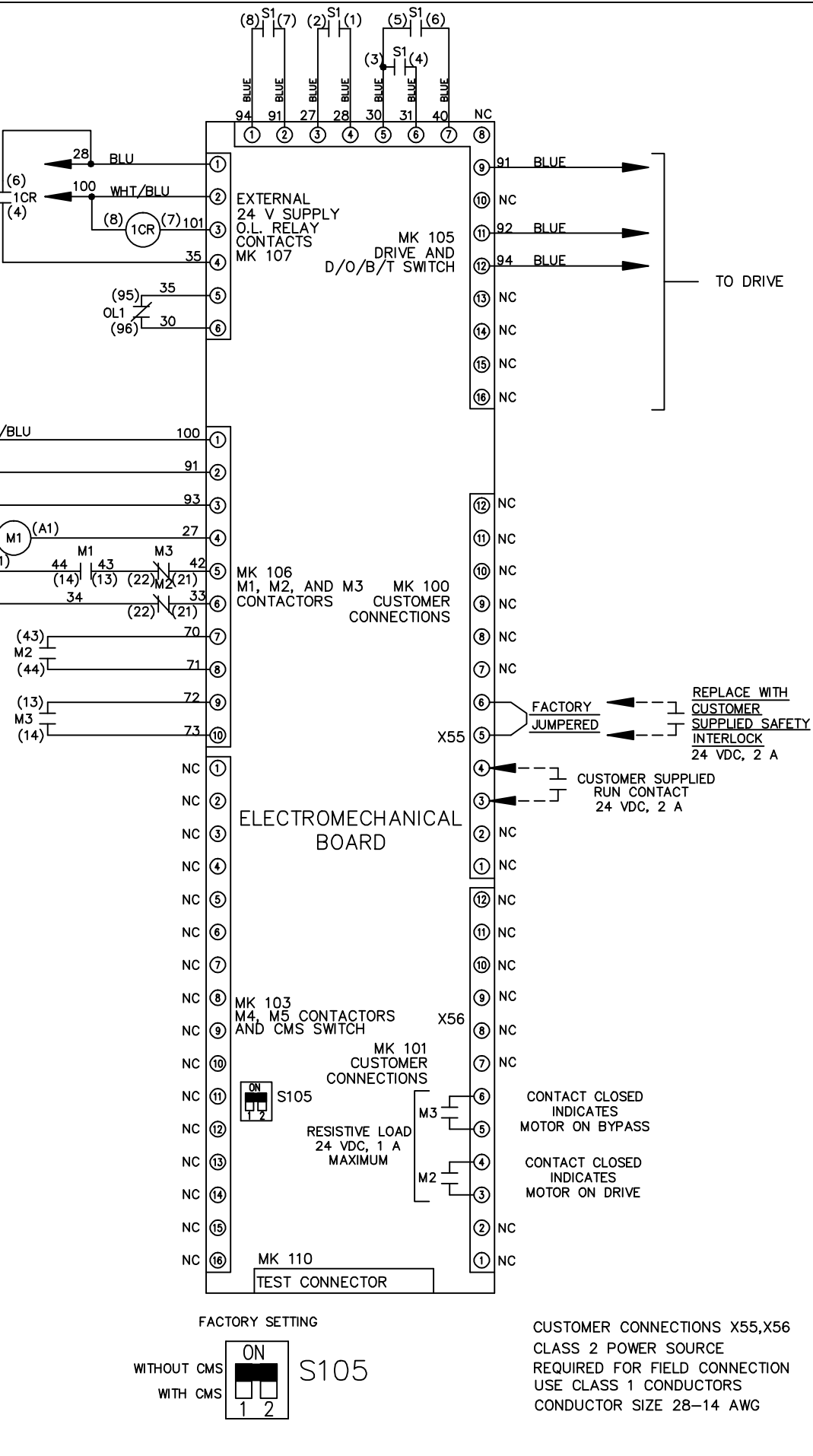
A	SP08061	10/08
REV	ECN	DATE

PAGE 1 OF 2      SIZE A      DWG NO. 174U8025

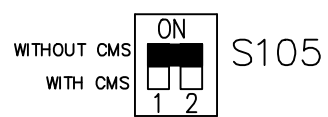
REV	ECON	DATE	THIS DRAWING IS PROPRIETARY AND SHALL NOT BE COPIED OR ITS CONTENTS DISCLOSED TO OUTSIDE PARTIES WITHOUT THE WRITTEN CONSENT OF THE TRANE COMPANY	
A	SP08066	10/08	DRN	JNW
			2/14/07	
			APR	
			MODEL	NAME 208-600VOLT, 3C, MAIN DISC
				, DRIVE FUSE, EMB1, FRAME C1N12
				, REACTOR & DVDI, SINGLE MTR
			PAGE 2 OF 2	
			SIZE A	
			DWG NO.	174U8025
			THE TRANE COMPANY A DIVISION OF AMERICAN STANDARD INC.	

CONTACT	POSITION	DRIVE	OFF	BYPASS	TEST
1-2		X			
3-4				X	X
5-6				X	X
7-8					X

CONTACT SEQUENCE CHART FOR S1  
 X INDICATES CONTACT CLOSED



FACTORY SETTING



CUSTOMER CONNECTIONS X55, X56  
 CLASS 2 POWER SOURCE  
 REQUIRED FOR FIELD CONNECTION  
 USE CLASS 1 CONDUCTORS  
 CONDUCTOR SIZE 28-14 AWG