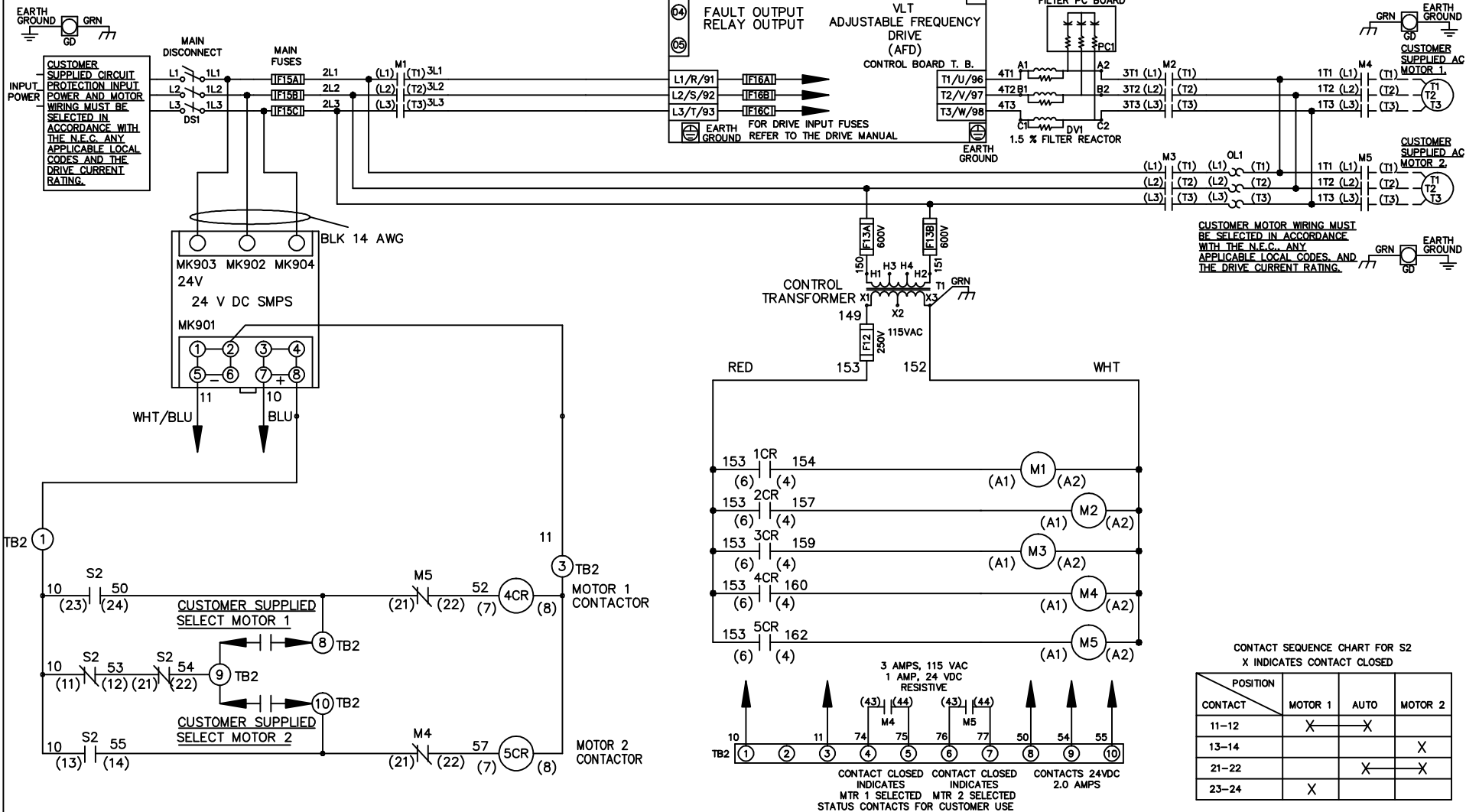


WIRE COLOR SCHEME

- BLACK - LINE VOLTAGE
- RED - AC CONTROL
- WHITE - AC GROUNDED
- WHITE - CIRCUIT CONDUCTOR
- BLUE - DC CONTROL
- WHT/BLU - DC CONTROL COMMON
- GREEN - CHASSIS GROUND



REV	ECN	DATE
A	SP08061	10/08

-NOTICE-

THIS DRAWING IS PROPRIETARY AND SHALL NOT BE COPIED OR ITS CONTENTS DISCLOSED TO OUTSIDE PARTIES WITHOUT THE WRITTEN CONSENT OF THE TRANE COMPANY

DRN JNW
2/14/07

APR

NAME 208 VOLT, 3C, MAIN DISC
, MAIN FUSE, ECB, FRAME C2N1_
, DVDT, CMS

MODEL

PAGE 1 OF 2

SIZE A

DWG NO. 174U8078

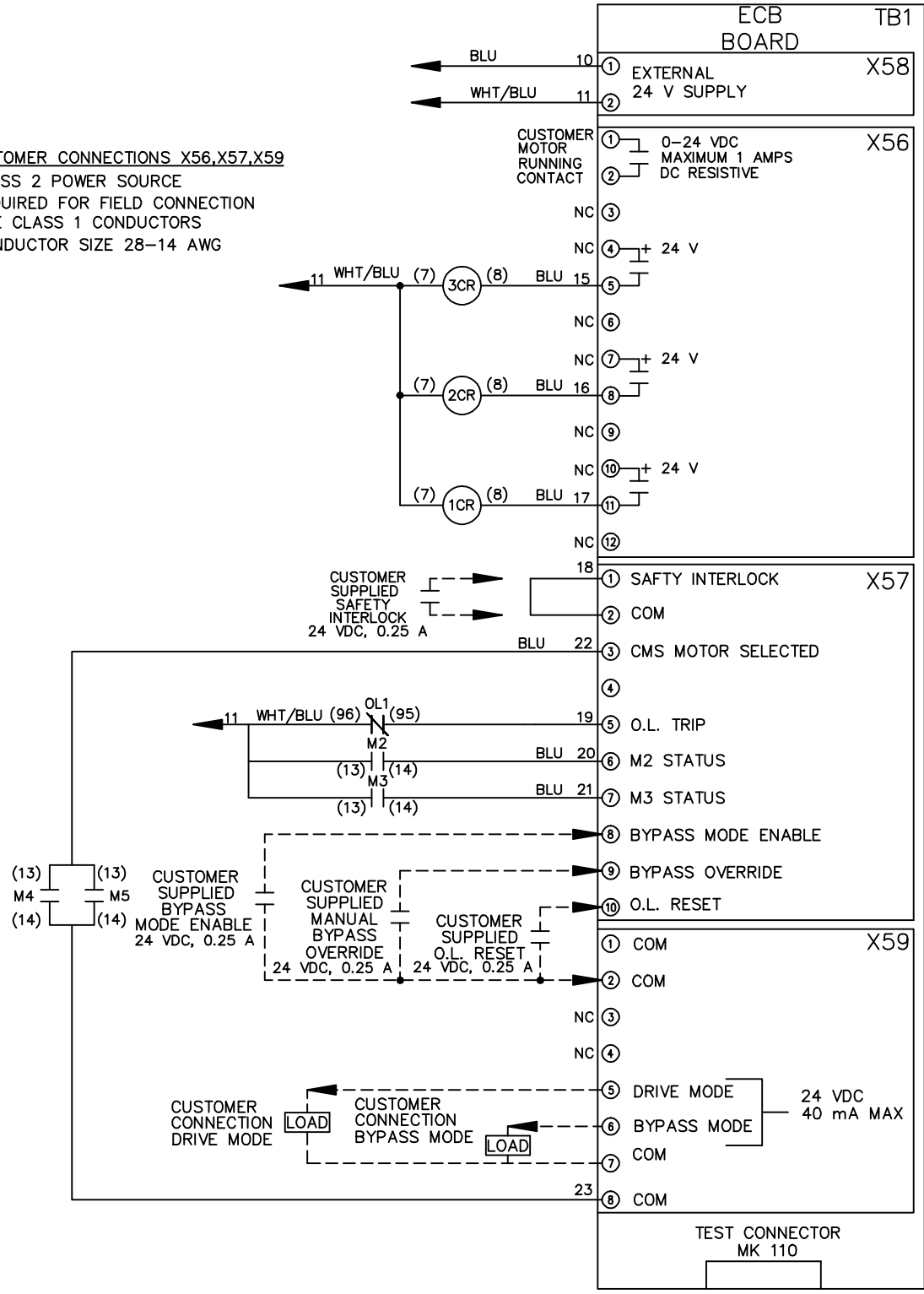
THE TRANE COMPANY
A DIVISION OF
AMERICAN STANDARD INC.

REV	ECN	DATE
A	SP08066	10/08

THIS DRAWING IS PROPRIETARY AND SHALL NOT BE COPIED OR ITS CONTENTS DISCLOSED TO OUTSIDE PARTIES WITHOUT THE WRITTEN CONSENT OF THE TRANE COMPANY

- NOTICE -

CUSTOMER CONNECTIONS X56,X57,X59
 CLASS 2 POWER SOURCE
 REQUIRED FOR FIELD CONNECTION
 USE CLASS 1 CONDUCTORS
 CONDUCTOR SIZE 28-14 AWG



DRN JNW
2/14/07

NAME: 208 VOLT, 3C, MAIN DISC
, MAIN FUSE, ECB, FRAME C2N1-
, DVDI, CMS

MODEL

THE TRANE COMPANY
A DIVISION OF
AMERICAN STANDARD INC.

(13) M4
 (14) M5

CUSTOMER SUPPLIED BYPASS MODE ENABLE
 24 VDC, 0.25 A

CUSTOMER SUPPLIED MANUAL BYPASS OVERRIDE
 24 VDC, 0.25 A

CUSTOMER SUPPLIED O.L. RESET
 24 VDC, 0.25 A

CUSTOMER CONNECTION DRIVE MODE
 LOAD

CUSTOMER CONNECTION BYPASS MODE
 LOAD

24 VDC
 40 mA MAX

APR

PAGE 2 OF 2

SIZE A

DWG NO. 174U8078