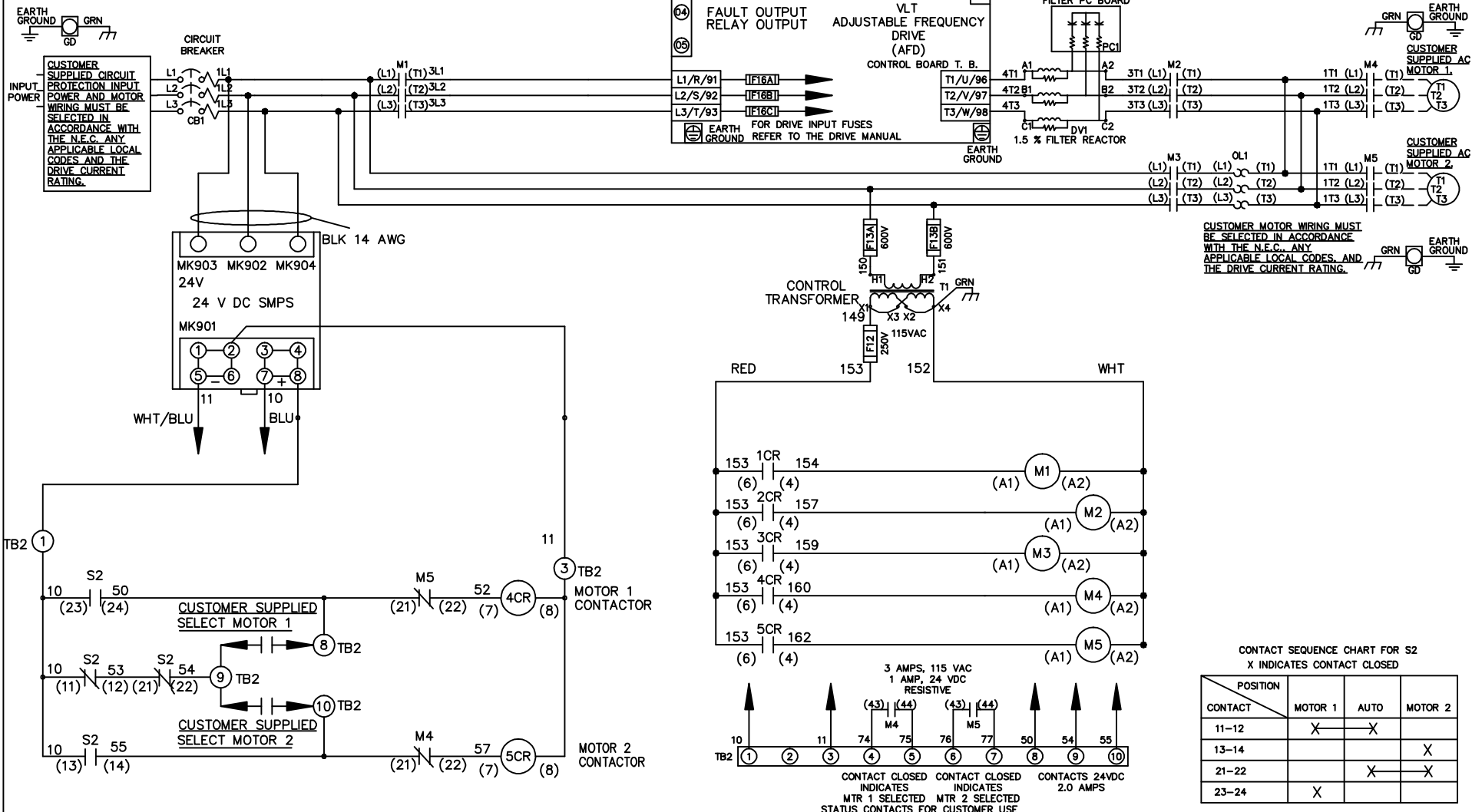
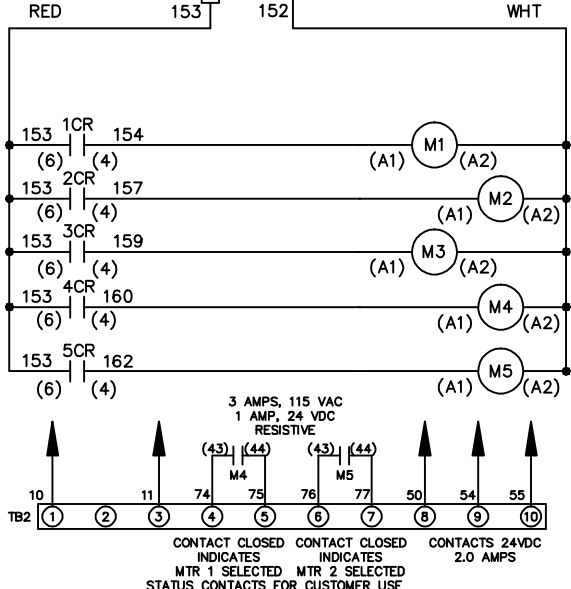


WIRE COLOR SCHEME

- BLACK - LINE VOLTAGE
- RED - AC CONTROL
- WHITE - AC GROUNDED
- WHITE - CIRCUIT CONDUCTOR
- BLUE - DC CONTROL
- WHT/BLU - DC CONTROL COMMON
- GREEN - CHASSIS GROUND



CUSTOMER MOTOR WIRING MUST BE SELECTED IN ACCORDANCE WITH THE N.E.C. ANY APPLICABLE LOCAL CODES, AND THE DRIVE CURRENT RATING.



<p align="center">-NOTICE-</p> <p>THIS DRAWING IS PROPRIETARY AND SHALL NOT BE COPIED OR ITS CONTENTS DISCLOSED TO OUTSIDE PARTIES WITHOUT THE WRITTEN CONSENT OF THE TRANE COMPANY</p>			<p>DRN JNW 2/14/07</p>	<p>NAME 600 VOLT, 3C, CB , DRIVE FUSE, ECB, FRAME C2N1_ , DVDT, CMS</p>	<p>THE TRANE COMPANY A DIVISION OF AMERICAN STANDARD INC.</p>
<p>A SP08061 10/08</p>	<p>APR</p>	<p>MODEL</p>	<p>PAGE 1 OF 2</p>	<p>SIZE A</p>	<p>DWG NO. 174U8315</p>
<p>REV ECN DATE</p>	<p>APR</p>	<p>MODEL</p>	<p>PAGE 1 OF 2</p>	<p>SIZE A</p>	<p>DWG NO. 174U8315</p>

REV	ECN	DATE
A	SP08066	10/08

THIS DRAWING IS PROPRIETARY AND SHALL NOT BE COPIED OR ITS CONTENTS DISCLOSED TO OUTSIDE PARTIES WITHOUT THE WRITTEN CONSENT OF THE TRANE COMPANY

DRN JNW
 2/14/07
 APR

NAME600 VOLT,3C,CB
 ,DRIVE FUSE,ECB,FRAME C2N1
 ,DVDI,CMS

PAGE 2 OF 2

SIZE A

DWG NO. 174U8315

THE TRANE COMPANY
 A DIVISION OF
 AMERICAN STANDARD INC.

CUSTOMER CONNECTIONS X56,X57,X59
 CLASS 2 POWER SOURCE
 REQUIRED FOR FIELD CONNECTION
 USE CLASS 1 CONDUCTORS
 CONDUCTOR SIZE 28-14 AWG

