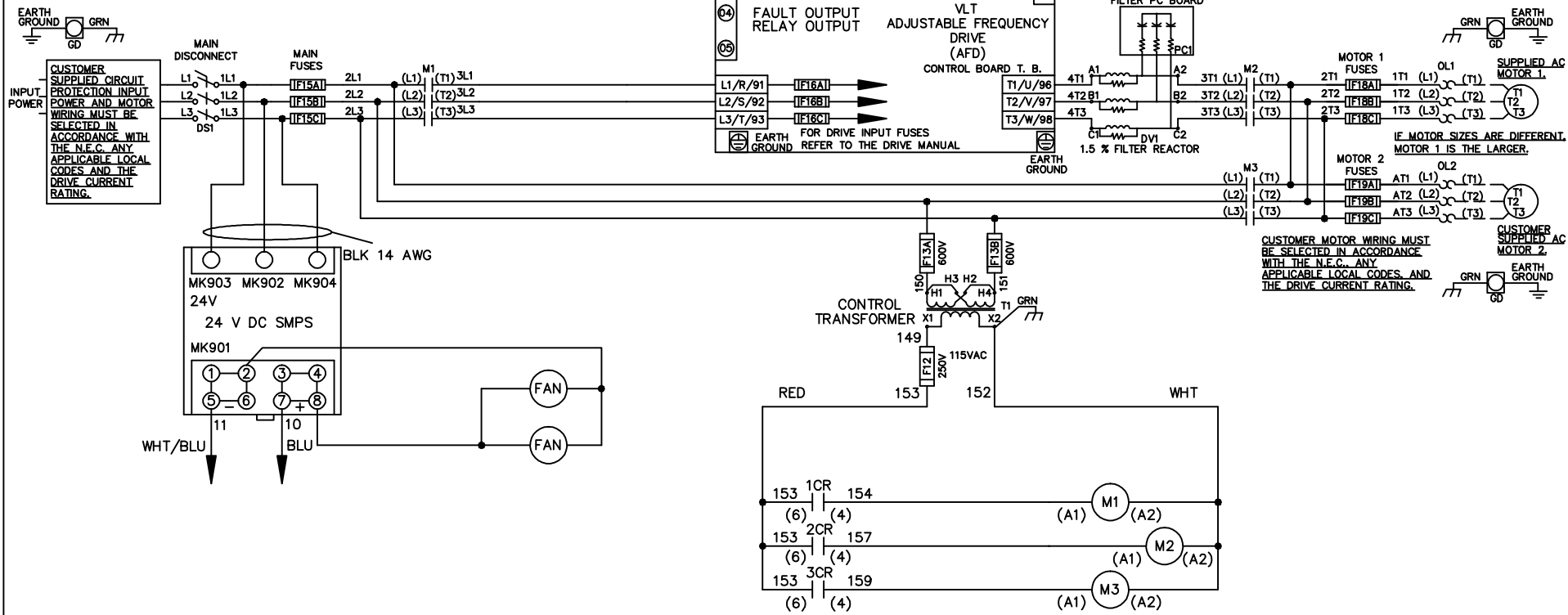


WIRE COLOR SCHEME
 BLACK - LINE VOLTAGE
 RED - AC CONTROL
 WHITE - AC GROUND
 WHITE - AC CIRCUIT CONDUCTOR
 BLUE - DC CONTROL
 WHT/BLU - DC CONTROL COMMON
 GREEN - CHASSIS GROUND



A	SP08061	10/08
REV	ECN	DATE

-NOTICE-
 THIS DRAWING IS PROPRIETARY AND SHALL NOT BE COPIED OR ITS CONTENTS DISCLOSED TO OUTSIDE PARTIES WITHOUT THE WRITTEN CONSENT OF THE TRANE COMPANY

DRN JNW
 2/14/07
 APR

NAME 230 VOLT,3C,MAIN DISC
 ,MAIN FUSE,ECB,FRAME C2N12
 ,DVDT,DUAL MTR

THE TRANE COMPANY
 A DIVISION OF
 AMERICAN STANDARD INC.
 MODEL _____ PAGE 1 OF 2 SIZE A DWG NO. 174U8489

REV	ECN	DATE
A	SP08066	10/08

THIS DRAWING IS PROPRIETARY AND SHALL NOT BE COPIED OR ITS CONTENTS DISCLOSED TO OUTSIDE PARTIES WITHOUT THE WRITTEN CONSENT OF THE TRANE COMPANY

- NOTICE -

CUSTOMER CONNECTIONS X56, X57, X59
 CLASS 2 POWER SOURCE
 REQUIRED FOR FIELD CONNECTION
 USE CLASS 1 CONDUCTORS
 CONDUCTOR SIZE 28-14 AWG

ECB BOARD TB1

X58

① EXTERNAL 24 V SUPPLY

②

X56

① CUSTOMER MOTOR RUNNING CONTACT 0-24 VDC MAXIMUM 1 AMPS DC RESISTIVE

②

NC ③

NC ④ + 24 V

NC ⑤

NC ⑥

NC ⑦ + 24 V

NC ⑧

NC ⑨

NC ⑩ + 24 V

NC ⑪

NC ⑫

X57

① SAFTY INTERLOCK

② COM

③ CMS MOTOR SELECTED

④

⑤ O.L. TRIP

⑥ M2 STATUS

⑦ M3 STATUS

⑧ BYPASS MODE ENABLE

⑨ BYPASS OVERRIDE

⑩ O.L. RESET

X59

① COM

② COM

③ NC

④ NC

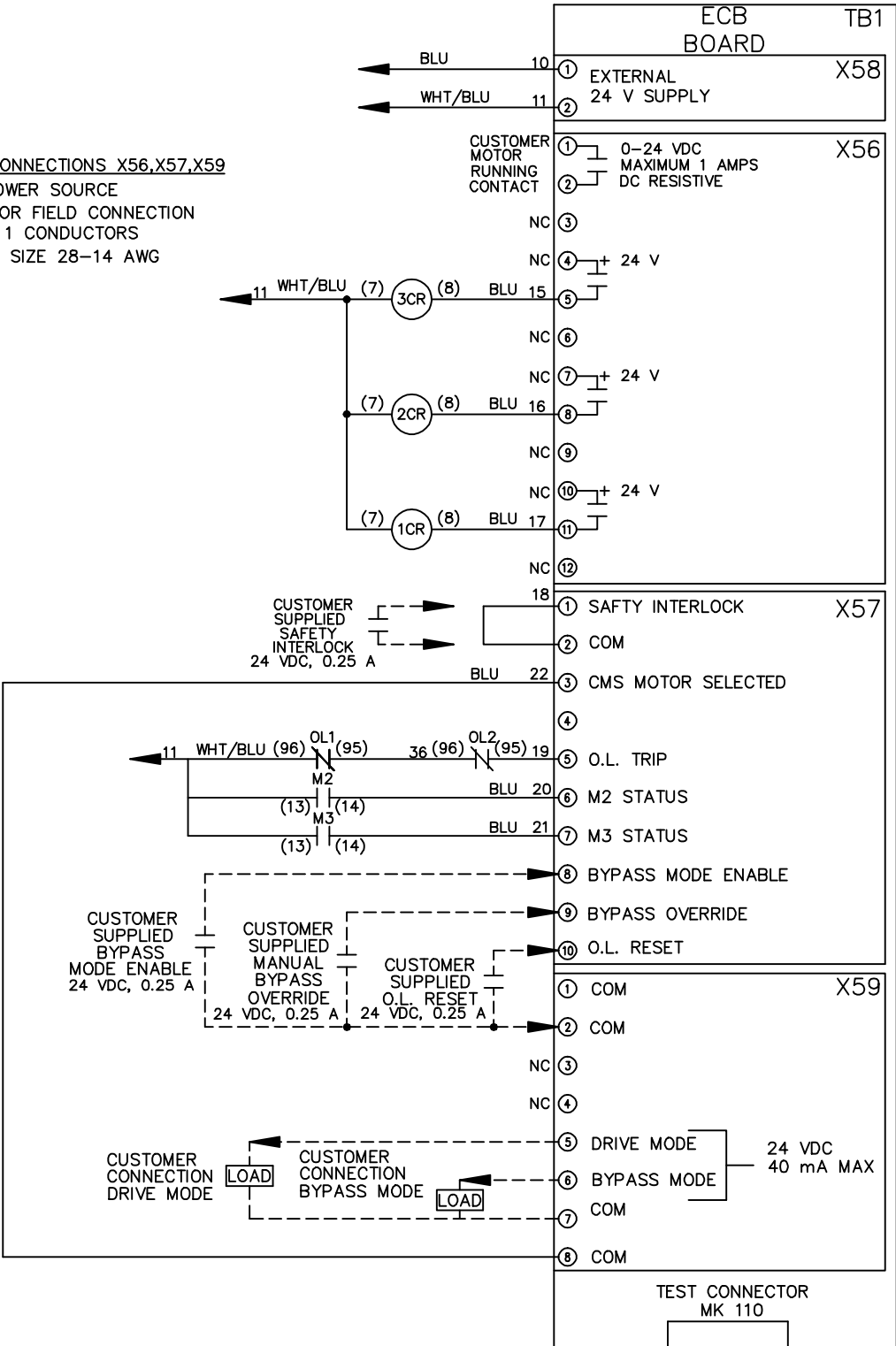
⑤ DRIVE MODE 24 VDC 40 mA MAX

⑥ BYPASS MODE

⑦ COM

⑧ COM

TEST CONNECTOR MK 110



DRN JNW
 2/14/07
 APR

NAME: 230 VOLT, 3C, MAIN DISC
 , MAIN FUSE, ECB, FRAME C2N12
 , DVDI, DUAL MTR

MODEL
 PAGE 2 OF 2
 SIZE A
 DWG NO. 174U8489

THE TRANE COMPANY
 A DIVISION OF
 AMERICAN STANDARD INC.