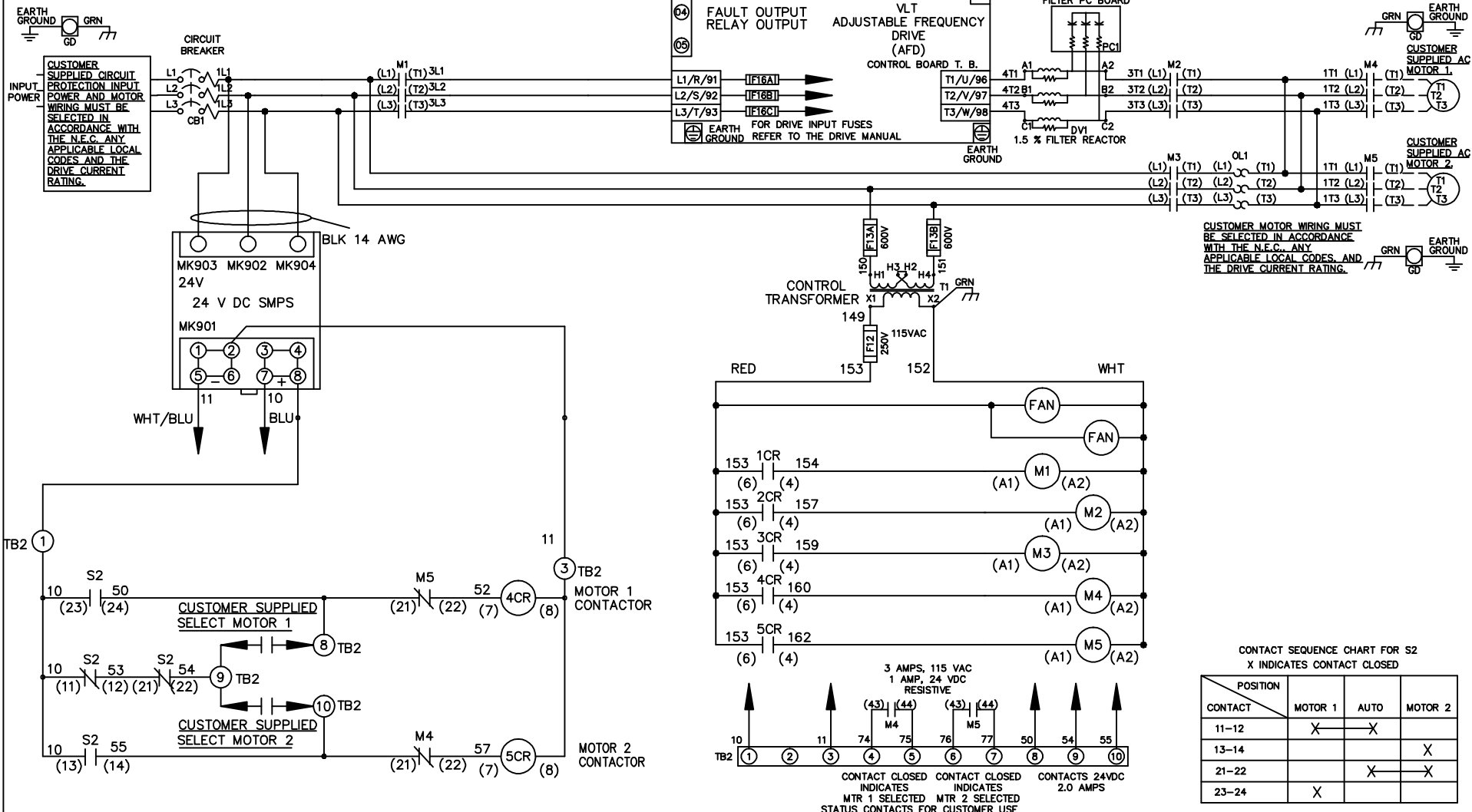


**WIRE COLOR SCHEME**

- BLACK - LINE VOLTAGE
- RED - AC CONTROL
- WHITE - AC GROUNDED
- WHITE - CIRCUIT CONDUCTOR
- BLUE - DC CONTROL
- WHT/BLU - DC CONTROL COMMON
- GREEN - CHASSIS GROUND



—NOTICE—

THIS DRAWING IS PROPRIETARY AND SHALL NOT BE COPIED OR ITS CONTENTS DISCLOSED TO OUTSIDE PARTIES WITHOUT THE WRITTEN CONSENT OF THE TRANE COMPANY

DRN JNW  
2/14/07

NAME 460 VOLT, 3C, CB  
, DRIVE FUSE, ECB, FRAME D1-D2  
, DVDT, CMS

THE TRANE COMPANY  
A DIVISION OF  
AMERICAN STANDARD INC.

REV	ECN	DATE
A	SP08061	10/08

APR

MODEL

PAGE 1 OF 2

SIZE A

DWG NO.

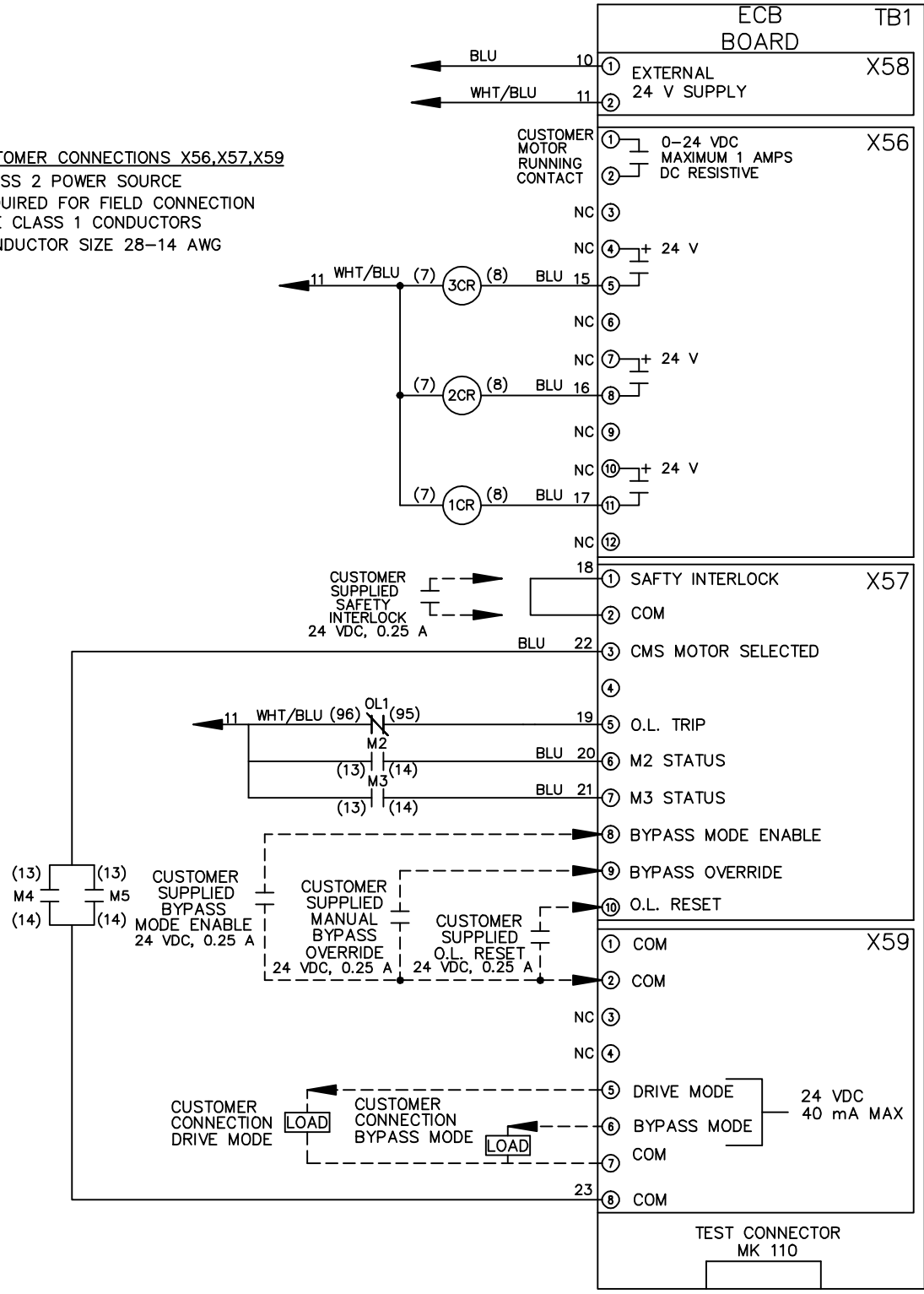
174U8720

REV	ECN	DATE
A	SP08066	10/08

THIS DRAWING IS PROPRIETARY AND SHALL NOT BE COPIED OR ITS CONTENTS DISCLOSED TO OUTSIDE PARTIES WITHOUT THE WRITTEN CONSENT OF THE TRANE COMPANY

**- NOTICE -**

CUSTOMER CONNECTIONS X56,X57,X59  
 CLASS 2 POWER SOURCE  
 REQUIRED FOR FIELD CONNECTION  
 USE CLASS 1 CONDUCTORS  
 CONDUCTOR SIZE 28-14 AWG



DRN JNW  
 2/14/07  
 APR

NAME: 460 VOLT, 3C, CB  
 DRIVE FUSE, ECB, FRAME D1-D2  
 , DVDI, CMS

MODEL: NAME460 VOLT, 3C, CB  
 DRIVE FUSE, ECB, FRAME D1-D2  
 , DVDI, CMS

PAGE 2 OF 2  
 SIZE A  
 DWG NO. 174U8720

THE TRANE COMPANY  
 A DIVISION OF  
 AMERICAN STANDARD INC.