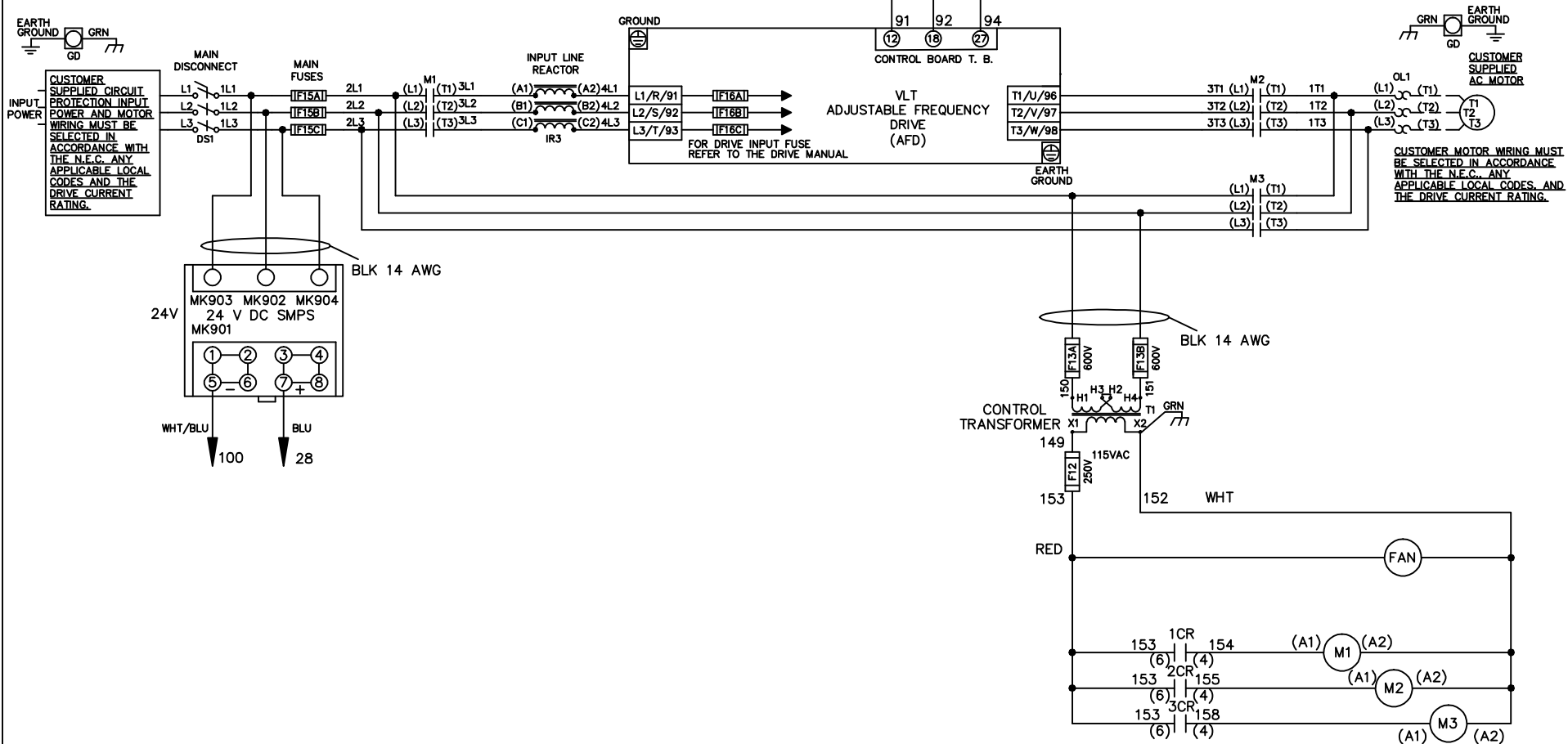


| WIRE COLOR SCHEME |                                 |
|-------------------|---------------------------------|
| BLACK             | - LINE VOLTAGE                  |
| RED               | - AC CONTROL                    |
| WHITE             | - AC GROUNDED CIRCUIT CONDUCTOR |
| BLUE              | - DC CONTROL                    |
| WHT/BLU           | - DC CONTROL COMMON             |
| GREEN             | - CHASSIS GROUND                |

\* ALL CONTROL WIRES ARE BLUE EXCEPT WHERE NOTED. TO ELECTROMECHANICAL RELAY BOARD



-NOTICE-

THIS DRAWING IS PROPRIETARY AND SHALL NOT BE COPIED OR ITS CONTENTS DISCLOSED TO OUTSIDE PARTIES WITHOUT THE WRITTEN CONSENT OF THE TRANE COMPANY

DRN JNW  
2/14/07

NAME 460 VOLT,3C,MAIN DISC  
,MAIN FUSE,EMB1,FRAME D1-D2  
,REACTOR,SINGLE MTR

THE TRANE COMPANY  
A DIVISION OF  
AMERICAN STANDARD INC.

|     |         |       |
|-----|---------|-------|
| A   | SP08061 | 10/08 |
| REV | ECN     | DATE  |

APR

MODEL

PAGE 1 OF 2

SIZE A

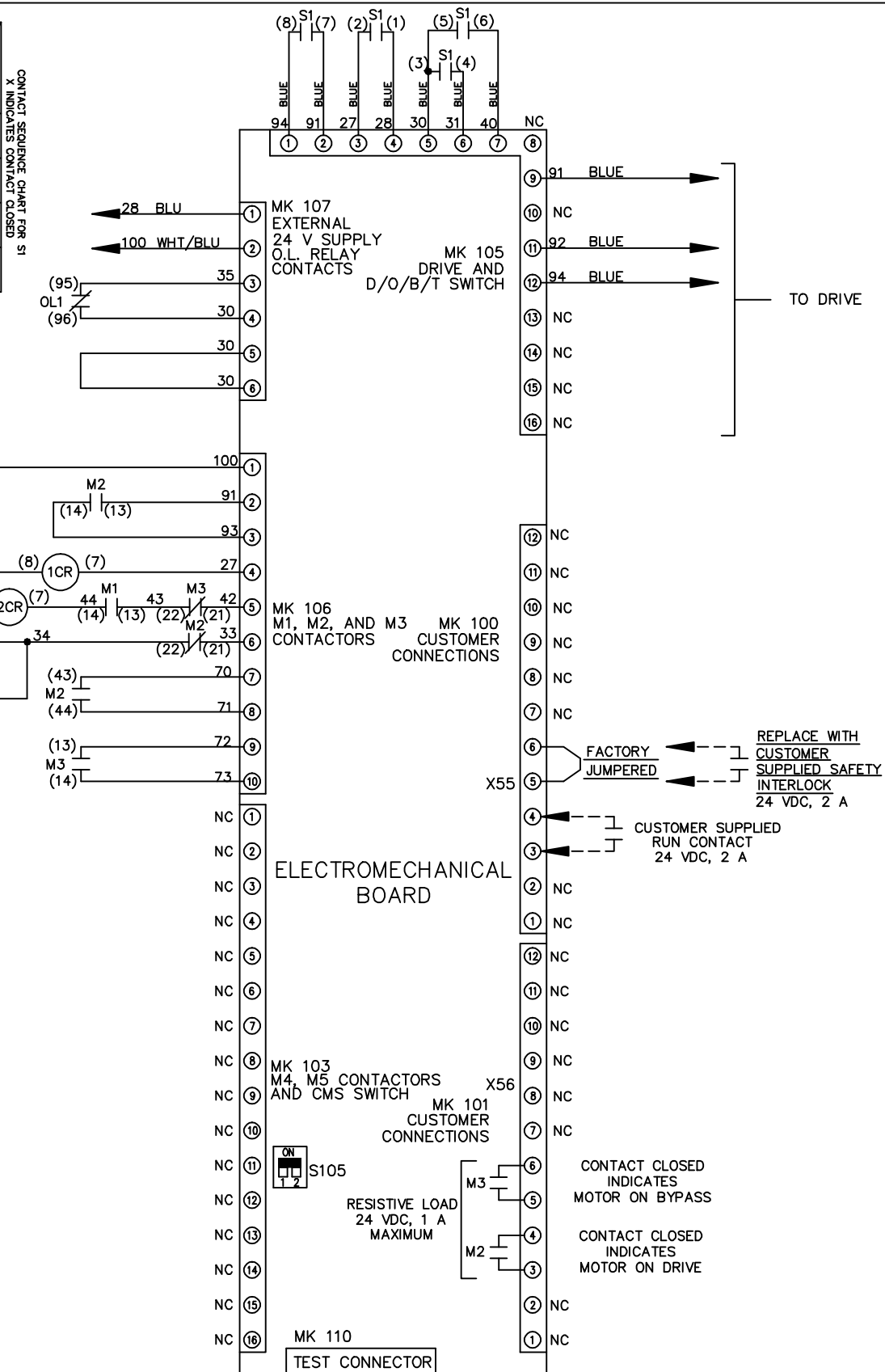
DWG NO.

174U8796

|  |         |       |     |     |         |     |             |   |      |     |          |
|--|---------|-------|-----|-----|---------|-----|-------------|---|------|-----|----------|
| REV  | ECON    | DATE  | DRN | JNW | 2/14/07 | APR | MODEL       | NAME 460 VOLT, 3C, MAIN DISC<br>, MAIN FUSE, EMB1, FRAME D1-D2<br>, REACTOR, SINGLE MTR | SIZE | DWG | 174U8796 |
| A  | SP08066 | 10/08 |     |     |         |     | PAGE 2 OF 2 |   | A    | NO. |          |
| <p style="text-align: center;">- NOTICE -</p> <p style="text-align: center;">THIS DRAWING IS PROPRIETARY AND SHALL NOT<br/>BE COPIED OR ITS CONTENTS DISCLOSED TO<br/>OUTSIDE PARTIES WITHOUT THE WRITTEN<br/>CONSENT OF THE TRANE COMPANY</p> |         |       |     |     |         |     |             |   |      |     |          |
| <p style="text-align: center;">THE TRANE COMPANY<br/>A DIVISION OF<br/>AMERICAN STANDARD INC.</p>  |         |       |     |     |         |     |             |   |      |     |          |

| CONTACT | POSITION | DRIVE | OFF | BYPASS | TEST |
|---------|----------|-------|-----|--------|------|
| 1-2     |          | X     |     |        | X    |
| 3-4     |          |       |     | X      | X    |
| 5-6     |          | X     |     |        |      |
| 7-8     |          |       |     |        | X    |

CONTACT SEQUENCE CHART FOR S1  
X INDICATES CONTACT CLOSED



CUSTOMER CONNECTIONS X55, X56  
CLASS 2 POWER SOURCE  
REQUIRED FOR FIELD CONNECTION  
USE CLASS 1 CONDUCTORS  
CONDUCTOR SIZE 28-14 AWG