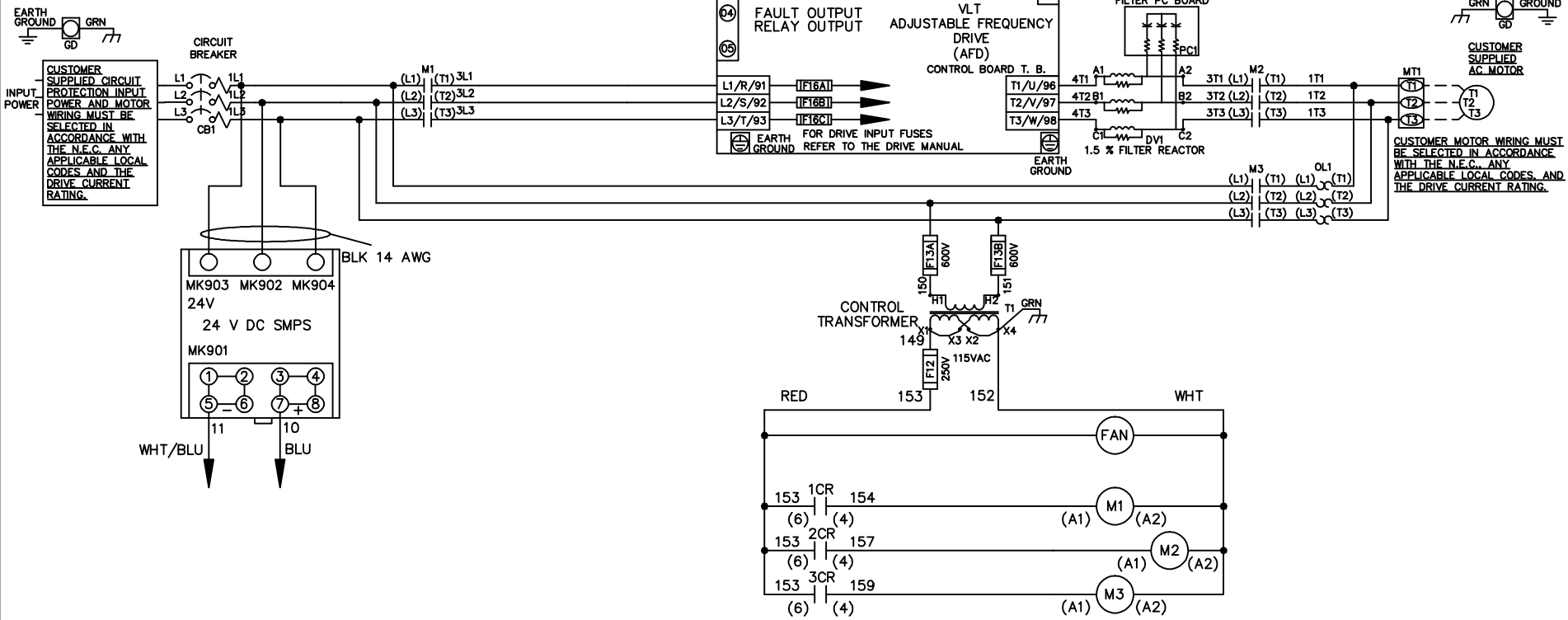


WIRE COLOR SCHEME
 BLACK - LINE VOLTAGE
 RED - AC CONTROL
 WHITE - AC GROUNDED
 WHITE - CIRCUIT CONDUCTOR
 BLUE - DC CONTROL
 WHT/BLU - DC CONTROL COMMON
 GREEN - CHASSIS GROUND



-NOTICE-

THIS DRAWING IS PROPRIETARY AND SHALL NOT BE COPIED OR ITS CONTENTS DISCLOSED TO OUTSIDE PARTIES WITHOUT THE WRITTEN CONSENT OF THE TRANE COMPANY

DRN JNW
2/14/07

APR

NAME 600 VOLT,3C,CB
 ,DRIVE FUSE,ECB,FRAME D1-D2
 ,DVDT,SINGLE MTR

MODEL

PAGE 1 OF 2

SIZE A

DWG NO.

THE TRANE COMPANY
 A DIVISION OF
 AMERICAN STANDARD INC.

174U8816

REV	ECN	DATE
A	SP08061	10/08

REV	ECN	DATE
A	SP08066	10/08

THIS DRAWING IS PROPRIETARY AND SHALL NOT BE COPIED OR ITS CONTENTS DISCLOSED TO OUTSIDE PARTIES WITHOUT THE WRITTEN CONSENT OF THE TRANE COMPANY

- NOTICE -

CUSTOMER CONNECTIONS X56,X57,X59
 CLASS 2 POWER SOURCE
 REQUIRED FOR FIELD CONNECTION
 USE CLASS 1 CONDUCTORS
 CONDUCTOR SIZE 28-14 AWG

DRN JNW
2/14/07

NAME600 VOLT,3C,CB

DRIVE FUSE,ECB,FRAME D1-D2

THE TRANE COMPANY
A DIVISION OF
AMERICAN STANDARD INC.

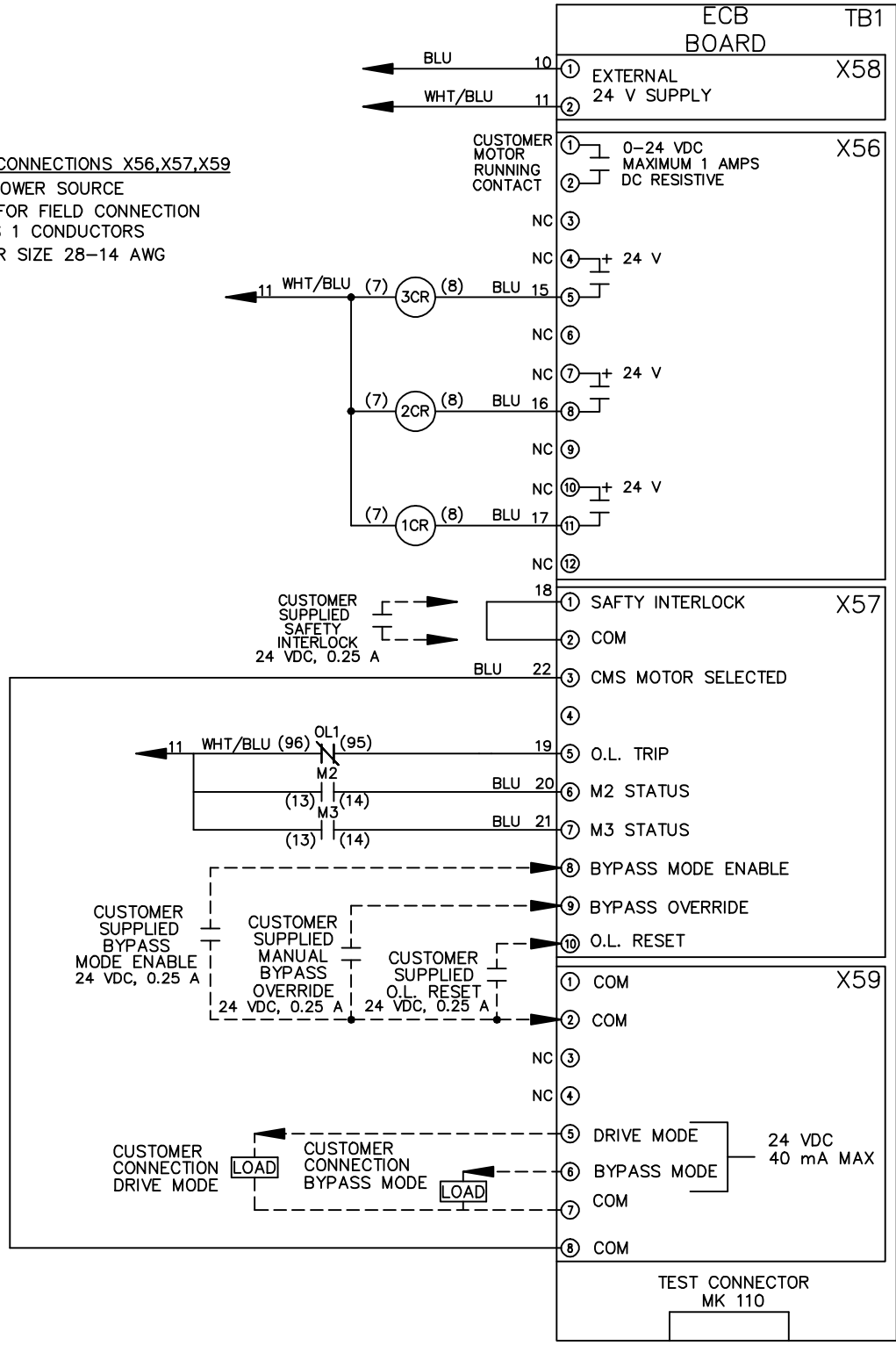
APR

MODEL

PAGE 2 OF 2

SIZE A

DWG NO. 174U8816



CUSTOMER SUPPLIED SAFETY INTERLOCK
 24 VDC, 0.25 A

CUSTOMER SUPPLIED BYPASS MODE ENABLE
 24 VDC, 0.25 A

CUSTOMER SUPPLIED MANUAL BYPASS OVERRIDE
 24 VDC, 0.25 A

CUSTOMER SUPPLIED O.L. RESET
 24 VDC, 0.25 A

CUSTOMER CONNECTION DRIVE MODE
 CUSTOMER CONNECTION BYPASS MODE