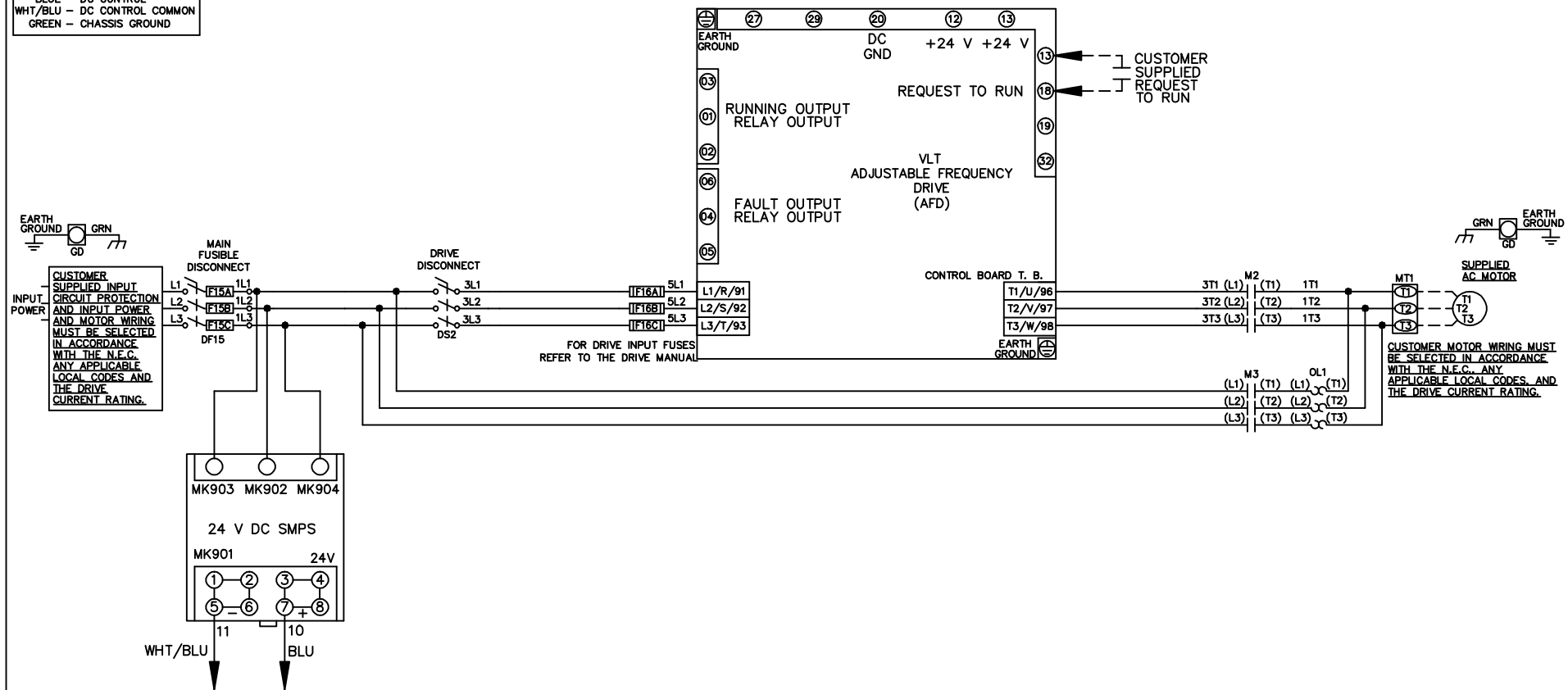


WIRE COLOR SCHEME
 BLACK - LINE VOLTAGE
 RED - AC CONTROL
 WHITE - AC GROUNDED
 CIRCUIT CONDUCTOR
 BLUE - DC CONTROL
 WHT/BLU - DC CONTROL COMMON
 GREEN - CHASSIS GROUND



			- NOTICE -	DRN JNW 2/14/07	NAME 208-600VOLT,2C,MAIN&DRIVE DISC FUSIBLE,ECB,FRAME A2-A3 ,NO REACTOR & DVDT,SINGLE MTR			<i>Danfoss</i>
A	SP08061	10/08	THIS DOCUMENT CONTAINS PROPRIETARY INFORMATION OF DANFOSS DRIVES. IT IS LOANED BY DANFOSS DRIVES SUBJECT TO THE CONDITIONS THAT IT AND THE INFORMATION EMBODIED THEREIN SHALL BE USED ONLY FOR RECORD AND REFERENCE PURPOSES, SHALL NOT BE USED OR CAUSED TO BE USED IN ANY WAY PREJUDICIAL TO THE INTERESTS OF DANFOSS DRIVES, SHALL NOT BE REPRODUCED OR COPIED IN WHOLE OR IN PART, OR DISCLOSED TO ANYONE WITHOUT THE DIRECT WRITTEN PERMISSION OF DANFOSS DRIVES AND SHALL BE RETURNED UPON REQUEST.	APR	MODEL	PAGE 1 OF 2	SIZE A	DWG No. 174U9021
REV	ECN	DATE						

REV	A	ECN	SP08066	DATE	10/08
-----	---	-----	---------	------	-------

NOTICE
 THIS DOCUMENT CONTAINS PROPRIETARY INFORMATION OF DANFOSS DRIVES. IT IS LOANED BY DANFOSS DRIVES SUBJECT TO THE CONDITIONS THAT IT AND THE INFORMATION EMBODIED THEREIN SHALL BE USED ONLY FOR RECORD AND REFERENCE PURPOSES. SHALL NOT BE USED OR CAUSED TO BE USED IN ANY WAY PREJUDICIAL TO THE INTERESTS OF DANFOSS DRIVES. SHALL NOT BE REPRODUCED OR COPIED IN WHOLE OR IN PART, OR DISCLOSED TO ANYONE WITHOUT THE DIRECT WRITTEN PERMISSION OF DANFOSS DRIVES AND SHALL BE RETURNED UPON REQUEST.

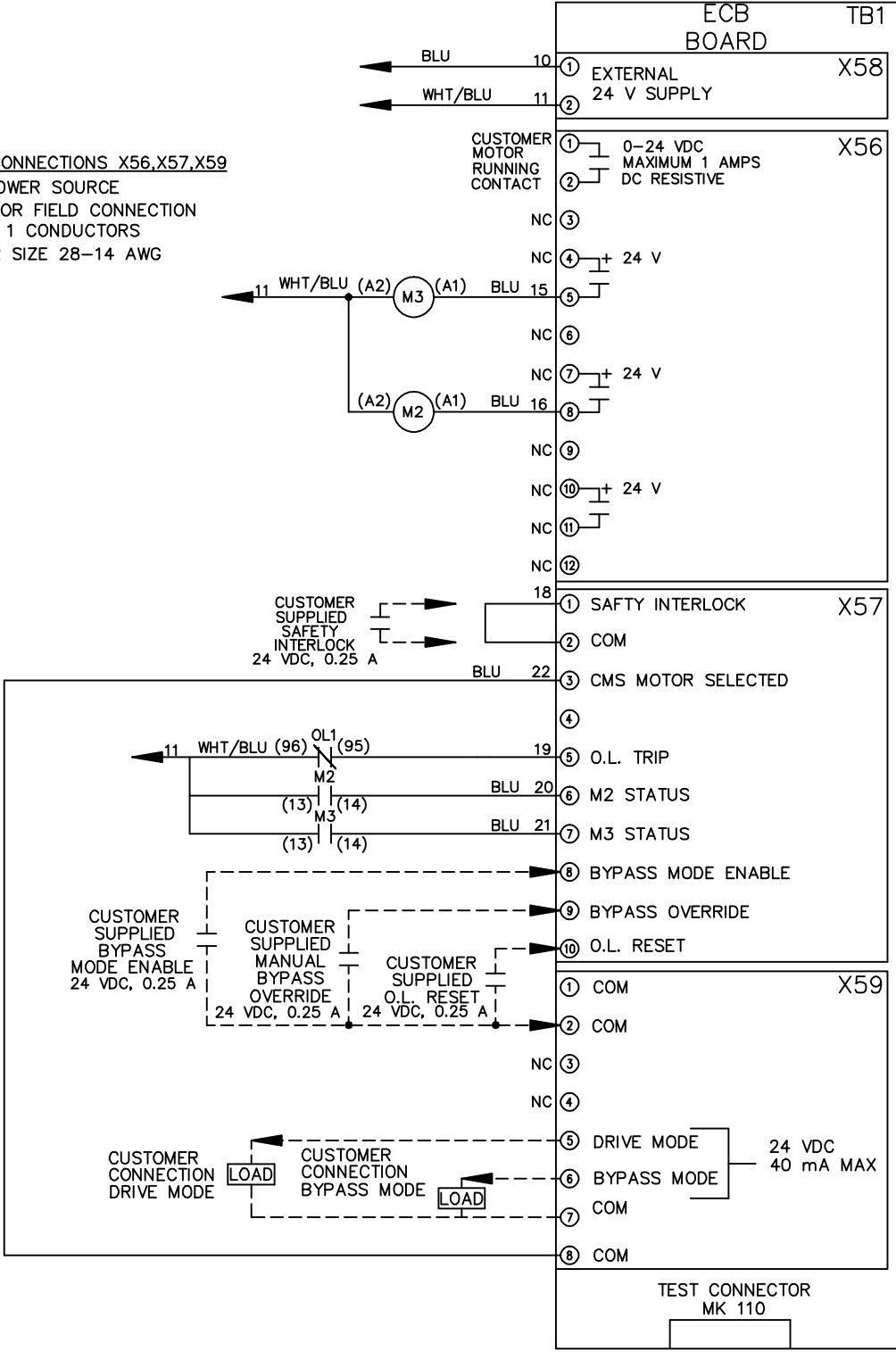
DRN JNW
 2/14/07
 APR

NAME 208-600VOLT, 2C, MAIN & DRIVE DISC
 FUSIBLE, ECB, FRAME A2-A3
 , NO REACTOR & DVD, SINGLE MTR

PAGE 2 OF 2
 SIZE A
 DWG NO. 174U9021



CUSTOMER CONNECTIONS X56, X57, X59
 CLASS 2 POWER SOURCE
 REQUIRED FOR FIELD CONNECTION
 USE CLASS 1 CONDUCTORS
 CONDUCTOR SIZE 28-14 AWG



ECB BOARD TB1

① EXTERNAL 24 V SUPPLY
 ②

① CUSTOMER MOTOR RUNNING CONTACT
 ② 0-24 VDC MAXIMUM 1 AMPS DC RESISTIVE

NC ③
 NC ④ 24 V
 NC ⑤
 NC ⑥
 NC ⑦ 24 V
 NC ⑧
 NC ⑨
 NC ⑩ 24 V
 NC ⑪
 NC ⑫

① SAFETY INTERLOCK
 ② COM
 ③ CMS MOTOR SELECTED
 ④

⑤ O.L. TRIP
 ⑥ M2 STATUS
 ⑦ M3 STATUS
 ⑧ BYPASS MODE ENABLE
 ⑨ BYPASS OVERRIDE
 ⑩ O.L. RESET

① COM
 ② COM
 NC ③
 NC ④

⑤ DRIVE MODE
 ⑥ BYPASS MODE
 ⑦ COM
 ⑧ COM

TEST CONNECTOR MK 110