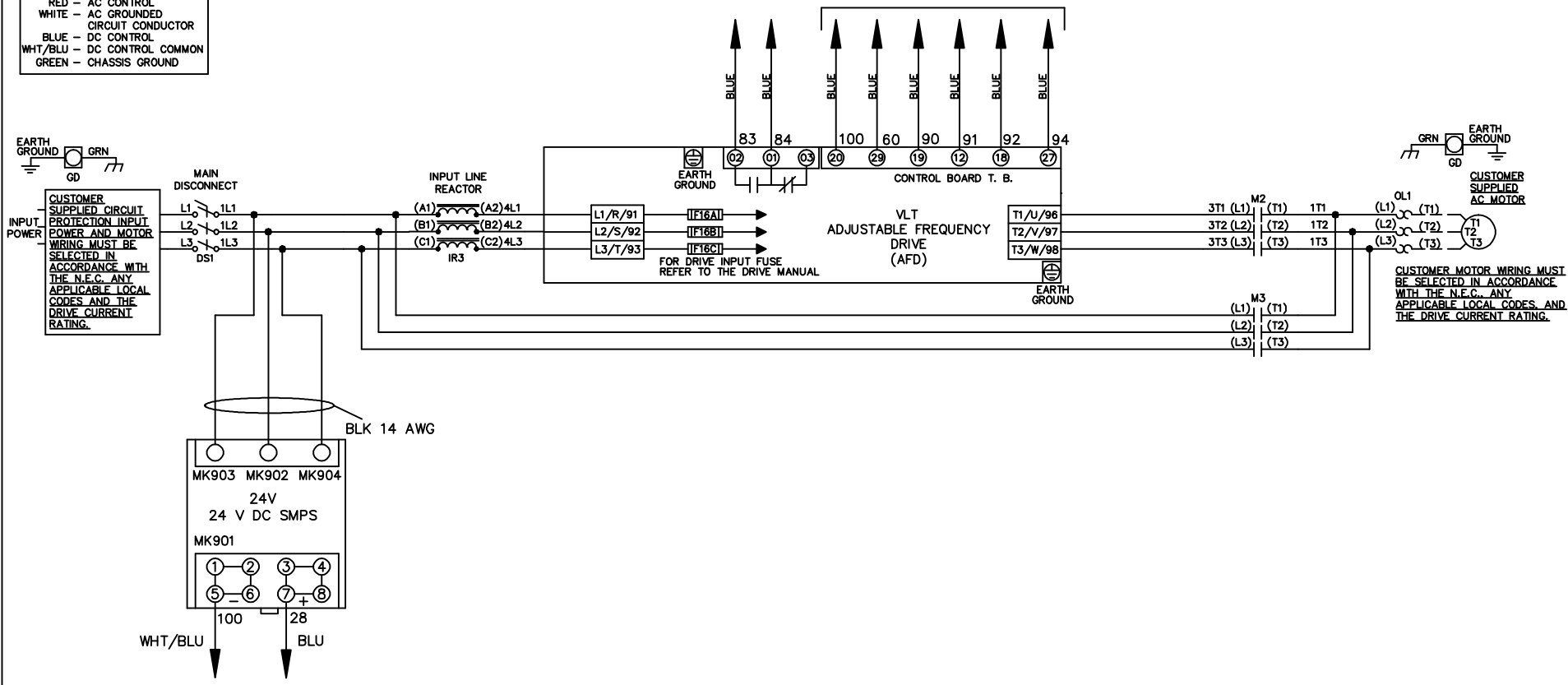


WIRE COLOR SCHEME	
BLACK	- LINE VOLTAGE
RED	- AC CONTROL
WHITE	- AC GROUND
	- CIRCUIT CONDUCTOR
BLUE	- DC CONTROL
WHT/BLU	- DC CONTROL COMMON
GREEN	- CHASSIS GROUND

* ALL CONTROL WIRES ARE BLUE EXCEPT WHERE NOTED. TO ELECTROMECHANICAL RELAY BOARD



A	SP08061	10/08
REV	ECN	DATE

-NOTICE-
 THIS DRAWING IS PROPRIETARY AND SHALL NOT BE COPIED OR ITS CONTENTS DISCLOSED TO OUTSIDE PARTIES WITHOUT THE WRITTEN CONSENT OF THE TRANE COMPANY

DRN JNW
 2/14/07
 APR

NAME 208-600VOLT, 2C, MAIN DISC
 ,DRIVE FUSE, EMB2, FRAME B2-C1
 ,REACTOR, SINGLE MTR

MODEL

PAGE 1 OF 2

THE TRANE COMPANY
 A DIVISION OF
 AMERICAN STANDARD INC.

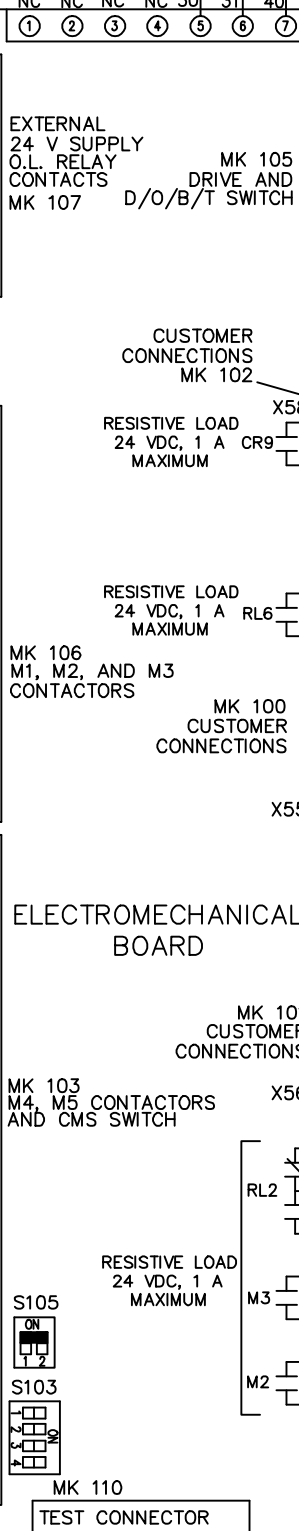
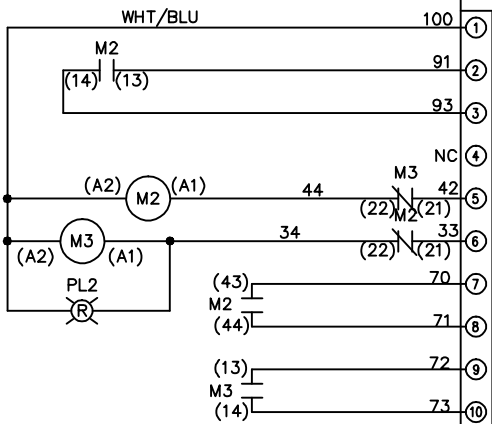
SIZE A
 DWG NO. 174U9825

REV	ECN	DATE
A	SP08066	10/08

CONTACT SEQUENCE CHART FOR S1 X INDICATES CONTACT CLOSED	
POSITION	CONTACT
DRIVE	13-14
OFF	23-24
BYPASS	
	X

THIS DRAWING IS PROPRIETARY AND SHALL NOT BE COPIED OR ITS CONTENTS DISCLOSED TO OUTSIDE PARTIES WITHOUT THE WRITTEN CONSENT OF THE TRANE COMPANY

-NOTICE-



CUSTOMER CONNECTIONS X55, X56, X58
 CLASS 2 POWER SOURCE
 REQUIRED FOR FIELD CONNECTION
 USE CLASS 1 CONDUCTORS
 CONDUCTOR SIZE 28-14 AWG

CONTACT CLOSED INDICATES REQUEST TO RUN

CONTACT CLOSED INDICATES FIREMANS OVERRIDE

CUSTOMER SUPPLIED FIREMANS OVERRIDE CONTACT 24 VDC, 2 A

REPLACE WITH CUSTOMER SUPPLIED SAFETY INTERLOCK 24 VDC, 2 A

CUSTOMER SUPPLIED RUN CONTACT 24 VDC, 2 A

CUSTOMER SUPPLIED DAMPER END SWITCH RUN CONTACT 24 VDC, 2 A

CONTACTS SHOWN IN FAULT POSITION

CONTACT CLOSED INDICATES MOTOR ON BYPASS

CONTACT CLOSED INDICATES MOTOR ON DRIVE

CUSTOMER SETTING AUTOMATIC BYPASS TIME SELECT

ONLY # 1 ON 30 SECONDS

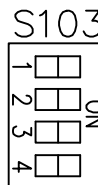
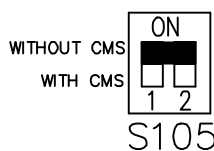
ONLY # 2 ON 60 SEC.

ONLY # 3 ON 300 SEC

ALL ON 15 SEC.

ALL OFF NO AUTO BYPASS (FACTORY DEFAULT)

FACTORY SETTING



DRN JNW
2/14/07

NAME 208-600VOLT, 2C, MAIN DISC
 DRIVE FUSE, EMB2, FRAME B2-C1
 REACTOR, SINGLE MTR

PAGE 2 OF 2
 SIZE A
 DWG NO. 174U9825

THE TRANE COMPANY
 A DIVISION OF
 AMERICAN STANDARD INC.