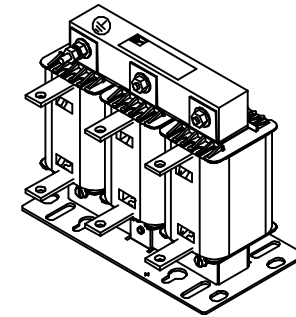
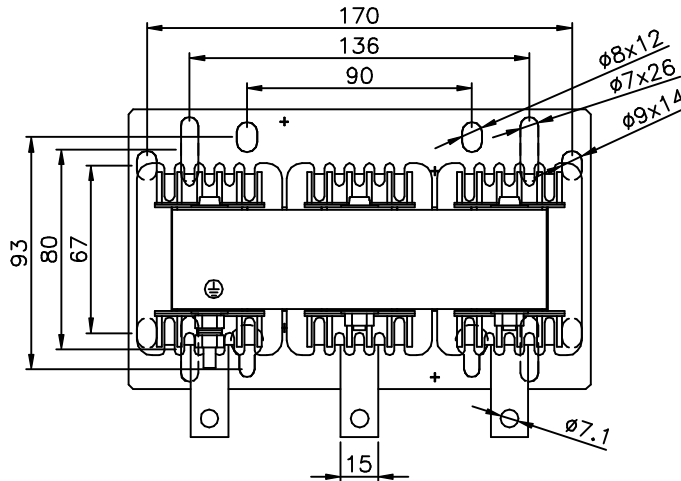
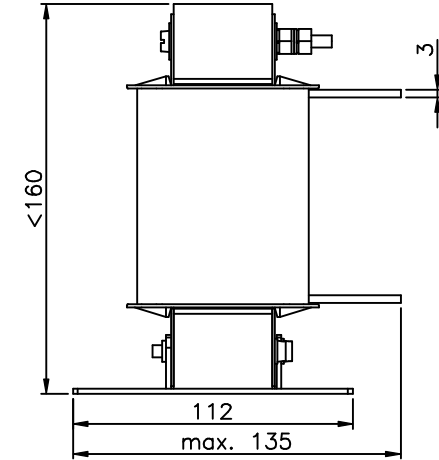
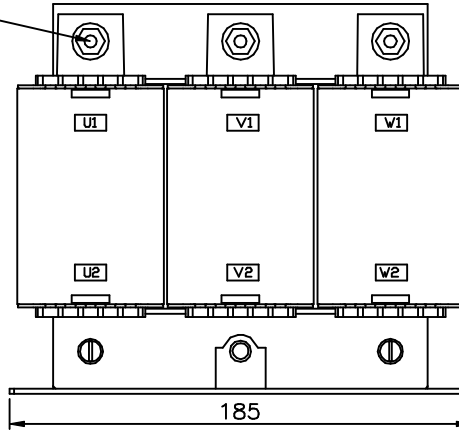


additional informations:  
 Inductance : 0,050mH  
 Rated current : 145A  
 Rated voltage : 3x 500V  
 Ambient temperature : max. 45°C

label:



earth connector M5



date	name	amendment
c 30.06.14	Schr./ Fle.	Terminalmarking included Screw connection corrected
b 10.02.14	Schr./ Fle.	order number and MMC number changed
a 14.02.13	Schr./ Kor.	label updated, Terminalmarking included

Dimensions toleranced according to ISO 2768-m						
Tolerance class	0,5 to 3	from 3 to 6	from 6 to 30	from 30 to 120	from 120 to 400	from 400 to 1000
m (middle)	±0.1	±0.1	±0.2	±0.3	±0.5	±0.8

drawn	18.10.12	Kornau	Kornau	scale 1:3
checked	18.10.12	Lauer	Lauer	format A4
	date	name	signature	
				DIN ISO 5456
				all dimensions mm

Dimensions B 1101147  
 Line Reactor LR3/x 145A – IP00

order number	drawing number	modi.	sheet
175U0319	Z791210018	c	1/1

Please observe protection clause to ISO 16016