
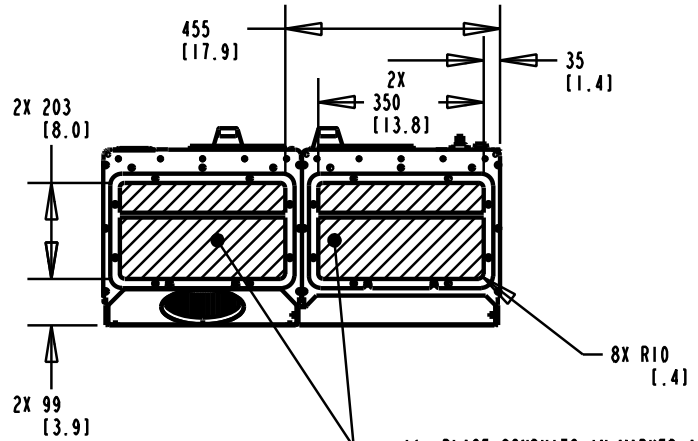
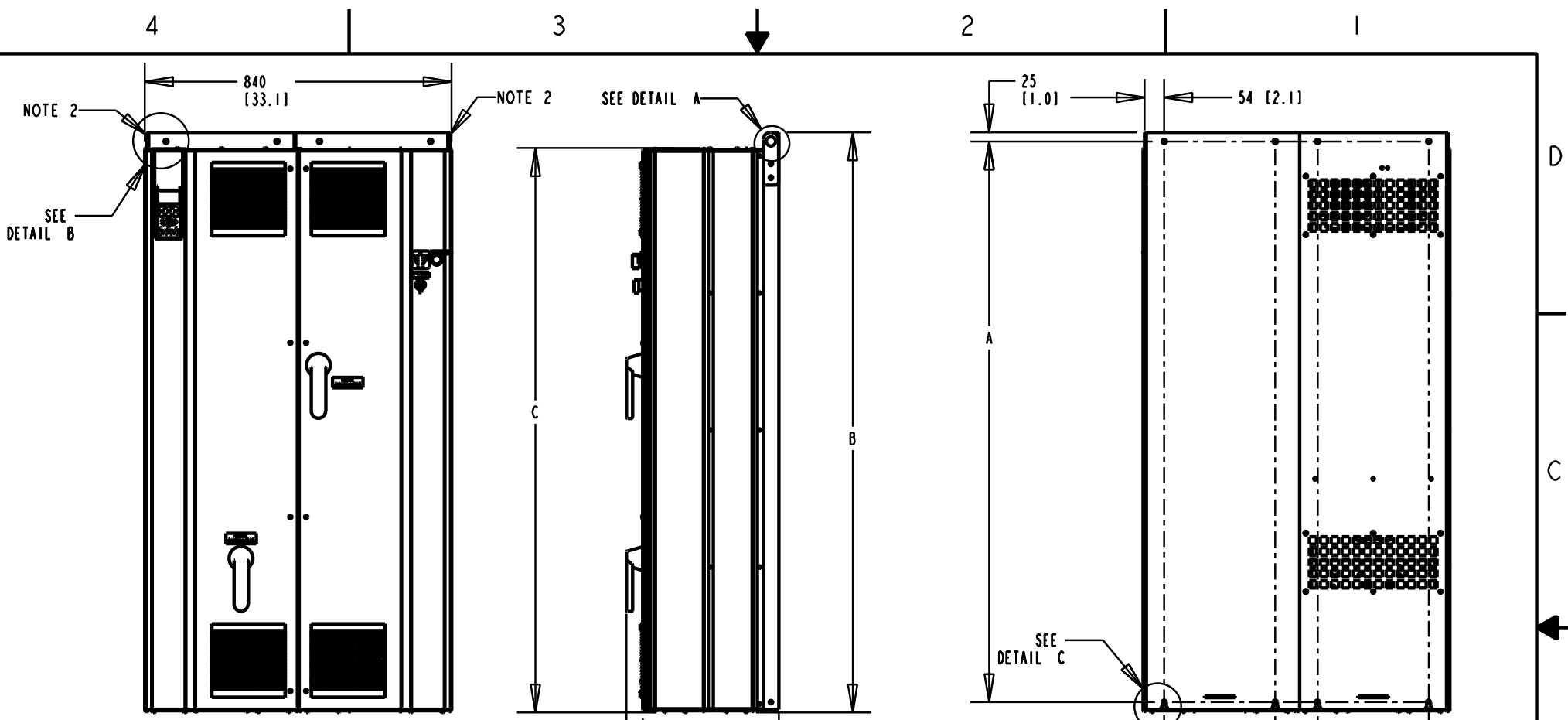


	A	B	C
D1 FRAME	1154 [45.5]	1208 [47.5]	1166 [45.9]
D2 FRAME	1535 [60.4]	1588 [62.4]	1545 [60.8]

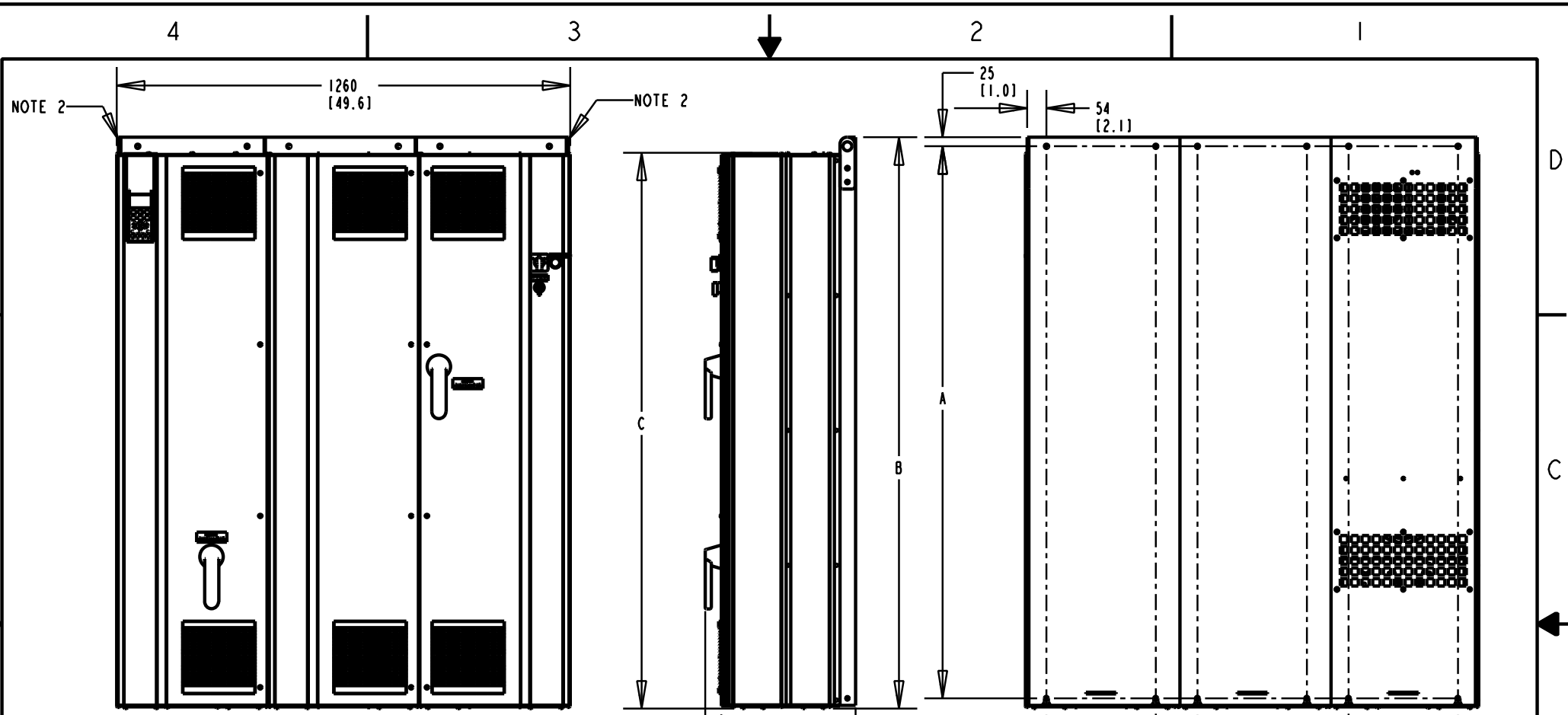
- NOTES:
1. THIS ENCLOSURE CONFIGURATION USED FOR OPTION COMBINATIONS CONTAINING DRIVE FUSING / DRIVE DISCONNECT
 2. AT MINIMUM THE TWO OUTSIDE LIFTING POINTS ARE REQUIRED WHEN HANDLING THIS UNIT.

- NOTICE -		PRO-E ENTRY BY/DATE: RD 01/25/05	CHECKED BY/DATE:		DANFOSS DRIVES 4401 N. BELL SCHOOL RD., LOVES PARK, ILLINOIS 61111 USA 18151 639-0600 FAX 18151 639-0600	
THIS DOCUMENT CONTAINS PROPRIETARY INFORMATION OF DANFOSS DRIVES. IT IS LOANED BY DANFOSS DRIVES SUBJECT TO THE CONDITIONS THAT IT AND THE INFORMATION EMBODIED THEREIN SHALL BE USED ONLY FOR RECORD AND REFERENCE PURPOSES. SHALL NOT BE USED OR CAUSED TO BE USED IN ANY WAY PREJUDICIAL TO THE INTERESTS OF DANFOSS DRIVES. SHALL NOT BE REPRODUCED OR COPIED IN WHOLE OR IN PART OR DISCLOSED TO ANYONE WITHOUT THE DIRECT WRITTEN PERMISSION OF DANFOSS DRIVES, AND SHALL BE RETURNED UPON REQUEST.		DESIGNED BY/DATE: RD 01/25/05	MFG. APPROVAL BY/DATE:		TITLE: MTG, INSTRUCTIONS	
		APPROVAL:	ENG. APPROVAL BY/DATE:			
LATEST E.C.N. NO.:	E.C.N. PRO-E ENTRY BY/DATE:	PLOT SCALE:	PRO-E FILE:	SHEET:	OF:	DRAWING NO.:
SP07056	DL 9/17/2007	NONE	APU_MAIN_D2	1	5	176U8435
						REV.: C



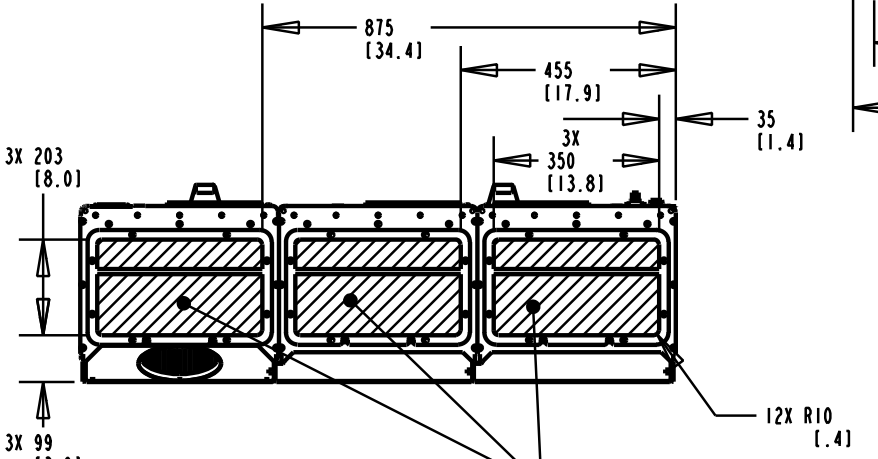
	A	B	C
D1 FRAME	1154 [45.5]	1208 [47.5]	1166 [45.9]
D2 FRAME	1535 [60.4]	1588 [62.4]	1545 [60.8]

- NOTES:
1. THIS ENCLOSURE CONFIGURATION USED FOR ALL OPTION COMBINATIONS EXCEPT BYPASS WITH DV/DT FILTER OR LINE REACTOR OR CONTACT MOTOR SELECT
 2. AT MINIMUM THE TWO OUTSIDE LIFTING POINTS ARE REQUIRED WHEN HANDLING THIS UNIT.



NOTE 2

NOTE 2



- 1) PLACE CONDUITS IN MARKED AREA
- 2) FOR NEMA TYPE 12 UNIT USE NEMA TYPE 12 CONDUITS AND HUBS

	A	B	C
D1 FRAME	1154 [45.5]	1208 [47.5]	1166 [45.9]
D2 FRAME	1535 [60.4]	1588 [62.4]	1545 [60.8]

NOTES:

- 1. THIS ENCLOSURE CONFIGURATION USED FOR OPTION COMBINATIONS CONTAINING BYPASS WITH DV/DT FILTER OR LINE REACTOR OR CONTACT MOTOR SELECT
- 2. AT MINIMUM THE TWO OUTSIDE LIFTING POINTS ARE REQUIRED WHEN HANDLING THIS UNIT.

TITLE: **MTG, INSTRUCTIONS**

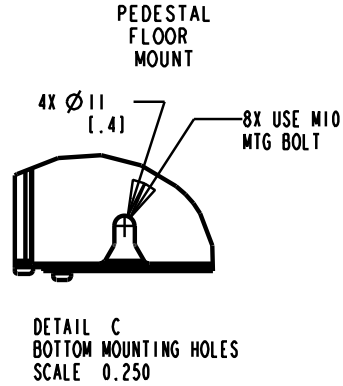
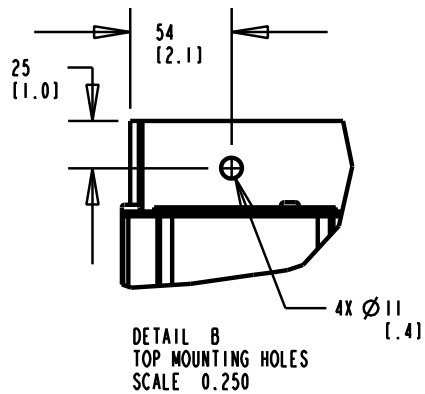
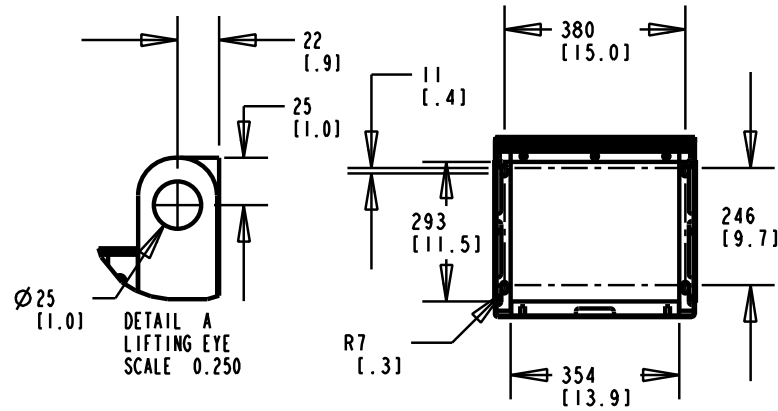
LATEST E.C.N. NO.: **SP07056** E.C.N. PRO-E ENTRY BY/DATE: **DL 9/17/2007** PLOT SCALE: **NONE** PRO-E FILE: **APU_MAIN_D2** SHEET: **3** OF: **5** DRAWING NO.: **176U8435** REV.: **C**

4

3

2

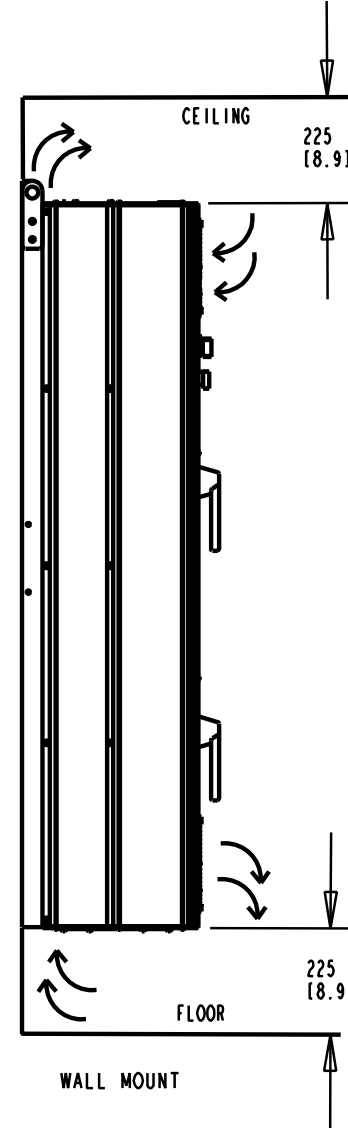
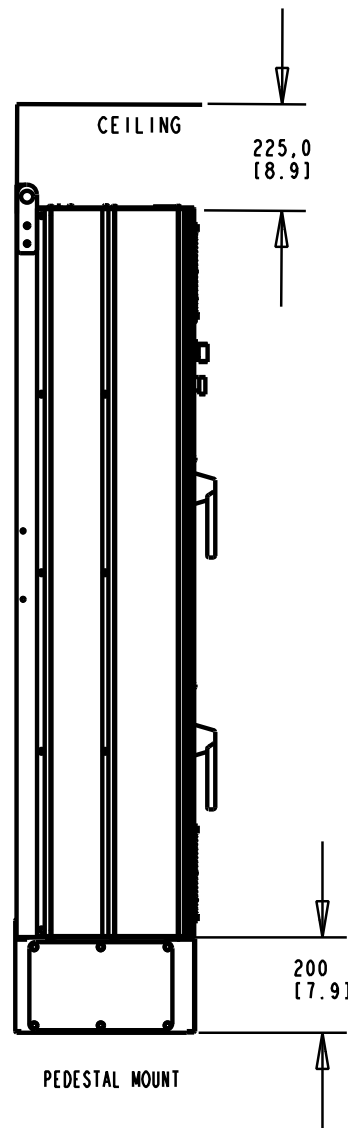
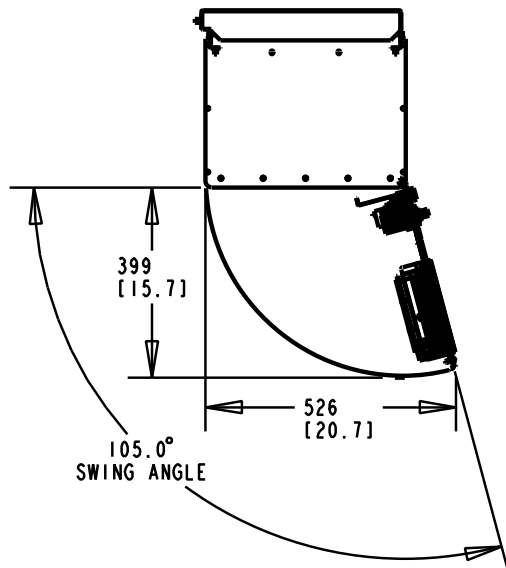
1



R7 [1.3]

PEDESTAL FLOOR MOUNT

4X Ø11 [1.4] 8X USE M10 MTG BOLT



VFD COOLING:

THE VFD MUST BE INSTALLED VERTICALLY WITH THE MINIMUM FREE SPACE. ALL IP21/UL NEMA TYPE 1 AND IP54/UL NEMA TYPE 12 UNITS MAY BE MOUNTED SIDE BY SIDE, WITH NO MINIMUM CLEARANCE.

TITLE: MTG, INSTRUCTIONS

LATEST E.C.N. NO.: SP07056

E.C.N. PRO-E ENTRY BY/DATE: DL 9/17/2007

PLOT SCALE: NONE

PRO-E FILE: APU_MAIN_D2

SHEET: 4 OF: 5

DRAWING NO.: 176U8435

REV.: C

D
C
B
A

4

3



2

1

SERIES

460V

FC 302

FC 102/202

FRAME

5000 (HO/NO)

4000/6000/8000

HP

125/150

150

D1

KW

90/110

110

D1

HP

150/200

200

D1

KW

110/132

132

D1

HP

200/250

250

D2

KW

132/160

160

D2

HP

250/300

300

D2

KW

160/200

200

D2

HP

300/350

350

D2

KW

200/250

250

D2

SERIES

600V

FC 302

FC 102/202

FRAME

5000 (HO/NO)

4000/6000/8000

HP

75/100

100

D1

KW

55/75

75

D1

HP

100/125

125

D1

KW

75/90

90

D1

HP

125/150

150

D1

KW

90/110

110

D1

HP

150/200

200

D1

KW

110/132

132

D1

HP

200/250

250

D2

KW

132/160

160

D2

HP

250/300

300

D2

KW

160/200

200

D2

HP

300/350

350

D2

KW

200/250

250

D2

HP

350/400

400

D2

KW

250/315

315

D2

TITLE:

MTG, INSTRUCTIONS

LATEST E.C.N. NO.:

SP07056

E.C.N. PRO-E ENTRY BY/DATE:

DL 9/17/2007

PLOT SCALE:

NONE

PRO-E FILE:

176U8435

SHEET:

5

OF:

5

DRAWING NO.:

176U8435

REV.:

C