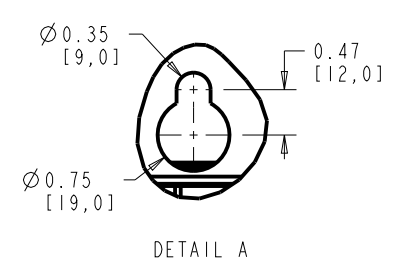
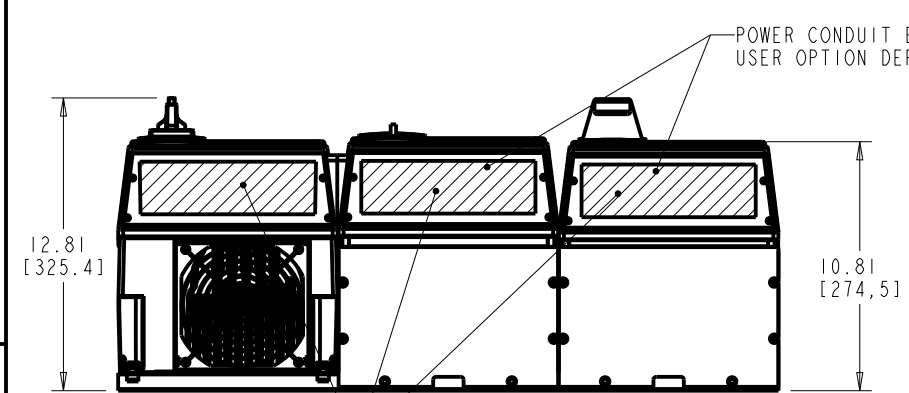
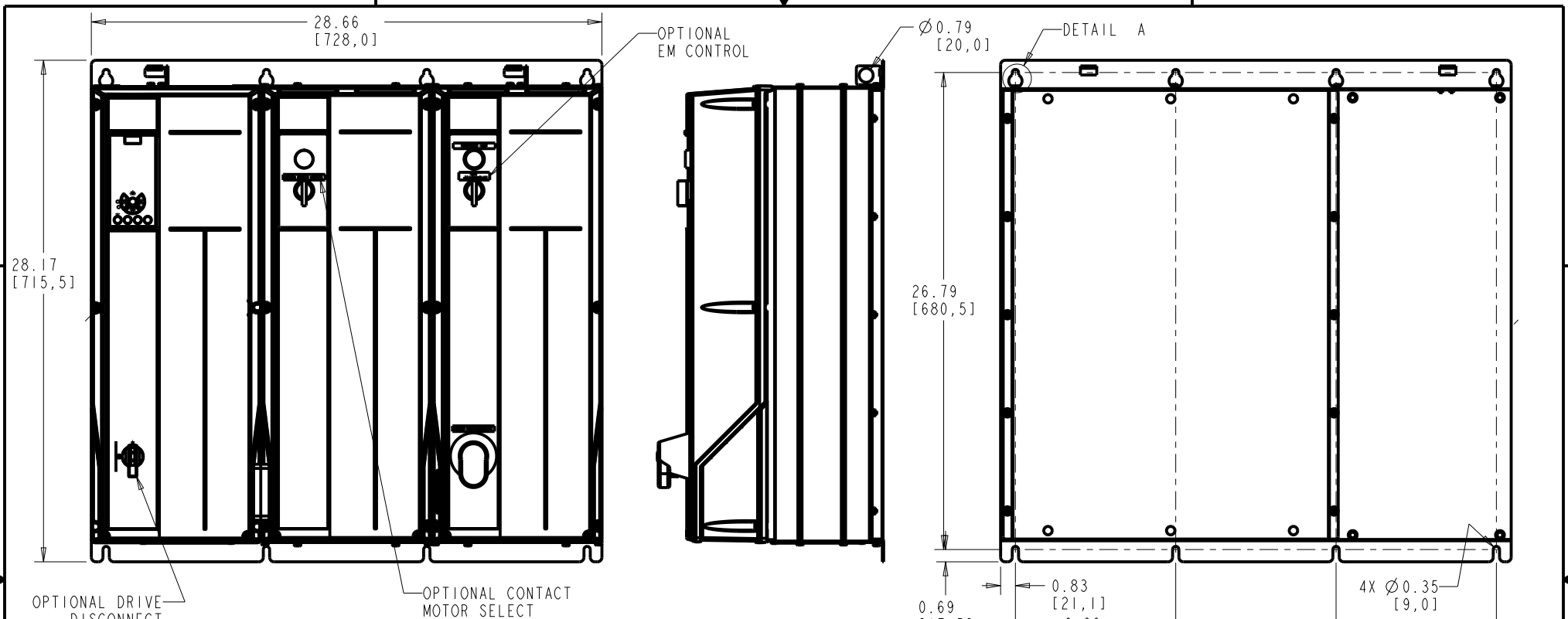


4

3

2

1



CLEARANCE REQUIREMENT FOR AIR FLOW COOLING:
 THE UNIT MUST BE INSTALLED VERTICALLY WITH THE MINIMUM CLEARANCE OF 3.94" [100.0mm] ON THE TOP AND BOTTOM. ALL UL NEMA TYPE 1/IP21 AND NEMA TYPE 12/IP54 UNITS MAY BE MOUNTED SIDE BY SIDE WITH NO MINIMUM SIDE CLEARANCE.
 UNIT APPROXIMATE WEIGHT: 180 Lbs [82 Kg]

CONTROL CONDUIT ENTRY FOR NEMA 12 TYPE UNITS USE NEMA TYPE 12 CONDUITS AND HUBS

FRAME SIZE B2 (B)		
VOLTAGE	HP	KW
208/230	15-20	11-15
460/600	30-40	22-30

- NOTICE -		PRO-E ENTRY BY/DATE: KD 2/21/07		CHECKED BY/DATE:		Danfoss	DANFOSS DRIVES		
THIS DOCUMENT CONTAINS PROPRIETARY INFORMATION OF DANFOSS DRIVES. IT IS LOANED BY DANFOSS DRIVES SUBJECT TO THE CONDITIONS THAT IT AND THE INFORMATION EMBODIED THEREIN SHALL BE USED ONLY FOR RECORD AND REFERENCE PURPOSES, SHALL NOT BE USED OR CAUSED TO BE USED IN ANY WAY PREJUDICIAL TO THE INTERESTS OF DANFOSS DRIVES, SHALL NOT BE REPRODUCED OR COPIED IN WHOLE OR IN PART OR DISCLOSED TO ANYONE WITHOUT THE DIRECT WRITTEN PERMISSION OF DANFOSS DRIVES, AND SHALL BE RETURNED UPON REQUEST.		DESIGNED BY/DATE: KD 2/21/07		MFG. APPROVAL BY/DATE:			4401 N. BELL SCHOOL RD., LOVES PARK, ILLINOIS 61111 USA (615) 639-9600 FAX (615) 639-9000		
		APPROVAL:		ENG. APPROVAL BY/DATE:		TITLE: DWG, REF, SUBMITTAL, B2 T3			
LATEST E.C.N. NO.: SP10032		E.C.N. PRO-E ENTRY BY/DATE: SAK 03/24/10		PLOT SCALE: NONE		PRO-E FILE: APU_BI_MAIN		SHEET: OF: DRAWING NO.: 176U8476	
								REV.: C	

4

3

2

1