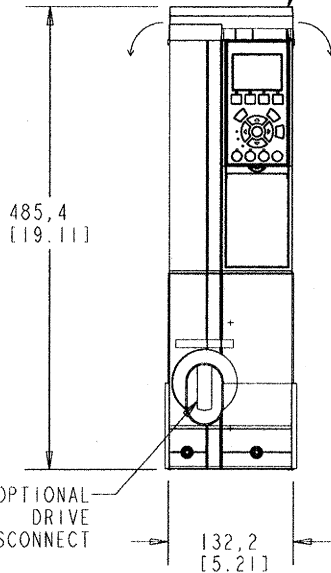
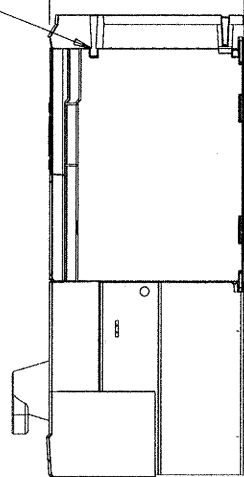


TO MOUNT UNIT  
REMOVE TOP HAT BY  
UNSNAPPING FRONT CLIPS



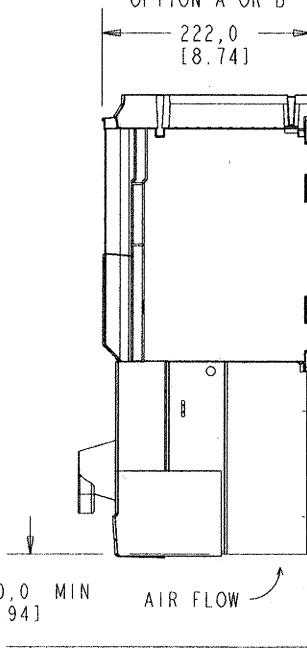
DEPTH WITHOUT  
OPTION A OR B

207,0 [8.15]

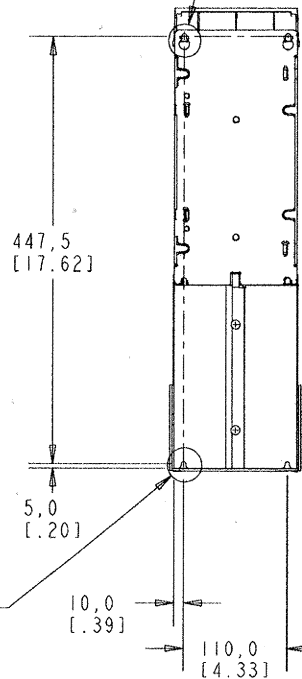


DEPTH WITH  
OPTION A OR B

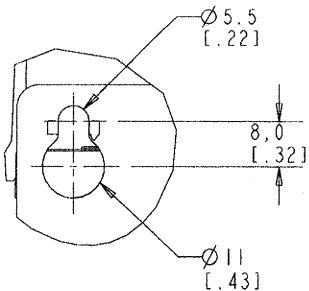
222,0 [8.74]



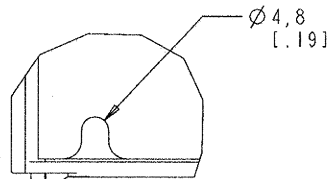
2X DETAIL B



2X DETAIL A



DETAIL B  
SCALE 0.750

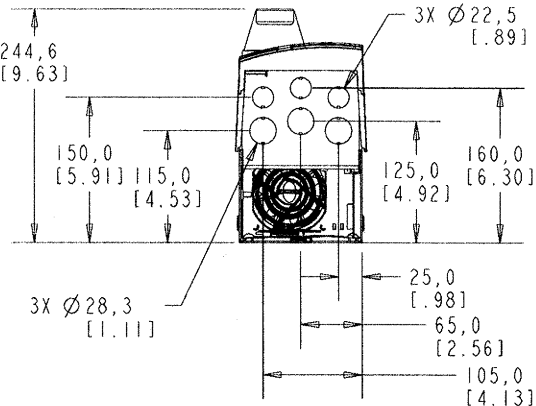


DETAIL A  
SCALE 0.750

| FRAME SIZE A2 AND A3 |        |         |
|----------------------|--------|---------|
| VOLTAGE              | HP     | KW      |
| 208/230              | 0.5-5  | 1.1-3.7 |
| 460/600              | 0.5-10 | 1.1-7.5 |

UNIT COOLING:

THE UNIT MUST BE INSTALLED VERTICALLY WITH THE MINIMUM FREE SPACE. ALLOW 38.1 [1.50 INCHES] ON EITHER SIDE FOR UNIT COOLING. (B)



- NOTICE -

THIS DOCUMENT CONTAINS PROPRIETARY INFORMATION OF DANFOSS DRIVES. IT IS LOANED BY DANFOSS DRIVES SUBJECT TO THE CONDITIONS THAT IT AND THE INFORMATION EMBODIED THEREIN SHALL BE USED ONLY FOR RECORD AND REFERENCE PURPOSES. SHALL NOT BE USED OR CAUSED TO BE USED IN ANY WAY PREJUDICIAL TO THE INTERESTS OF DANFOSS DRIVES, SHALL NOT BE REPRODUCED OR COPIED IN WHOLE OR IN PART OR DISCLOSED TO ANYONE WITHOUT THE DIRECT WRITTEN PERMISSION OF DANFOSS DRIVES, AND SHALL BE RETURNED UPON REQUEST.

PRO-E ENTRY BY/DATE:

RD 08/01/06

CHECKED BY/DATE:

RD 05/03/07

DESIGNED BY/DATE:

RD 08/01/06

MFG. APPROVAL BY/DATE:

APPROVAL:

ENG. APPROVAL BY/DATE:

PRO-E FILE:

APU\_A2-A3\_MAIN.TI



DANFOSS DRIVES  
4401 N. BELL SCHOOL RD. LOVES PARK, ILLINOIS 61111 USA  
(815) 639-8800 FAX (815) 639-8000

TITLE: DWG, REF, SUBMITTAL, A2-A3-TIER I, P650

LATEST E.C.N. NO.:

ECNSP07032

E.C.N. PRO-E ENTRY BY/DATE:

KD 04/03/07

PLOT SCALE:

NONE

SHEET:

OF:

DRAWING NO.:

176U8484

REV.:

B