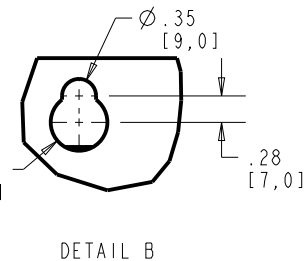
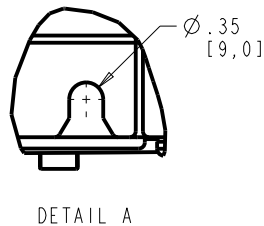
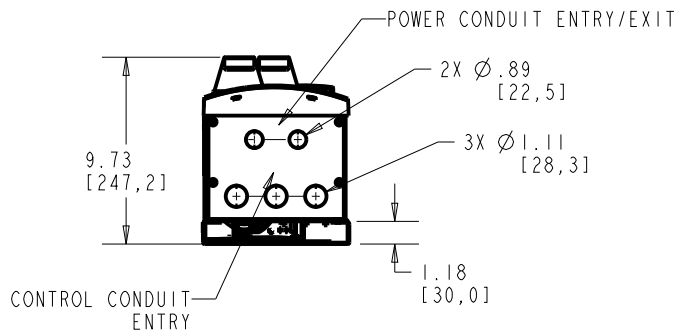
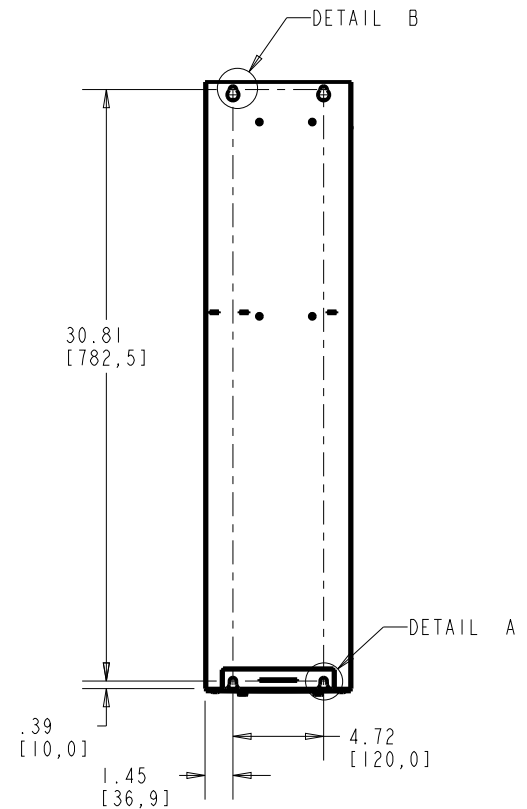
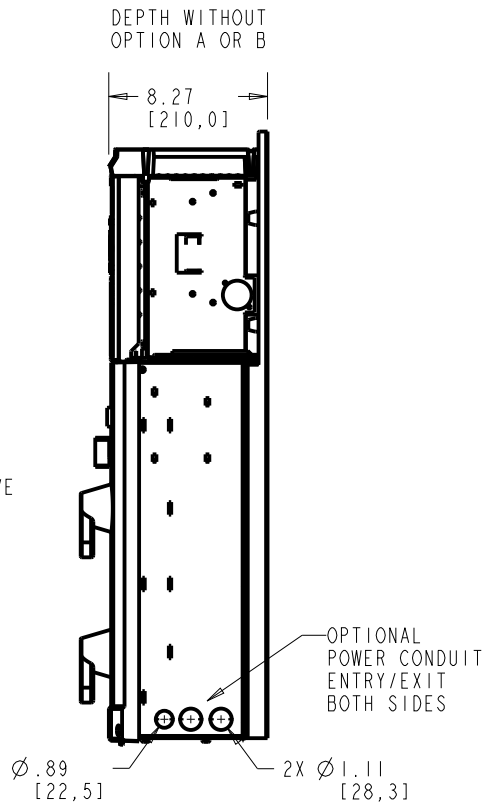
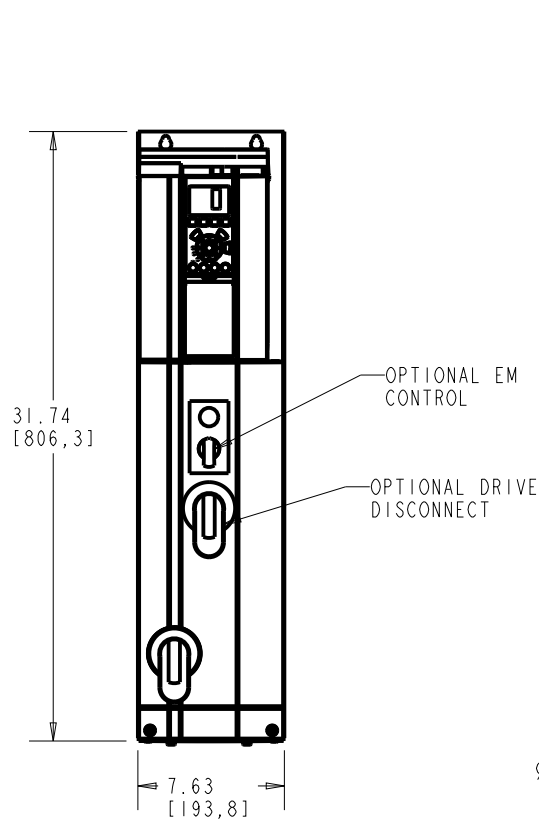


4

3

2

1



CLEARANCE REQUIREMENT FOR AIR FLOW COOLING:  
THE UNIT MUST BE INSTALLED VERTICALLY WITH THE MINIMUM CLEARANCE OF 3.94" [100.0mm] ON THE BOTTOM AND 1.50" [38.1mm] ON EITHER SIDE FOR UNIT COOLING.

UNIT APPROXIMATE WEIGHT: 35 Lbs [16 Kg]

FRAME SIZE A2 AND A3		
VOLTAGE	HP	KW
208/230	0.5-5	1.1-3.7
460/600	0.5-10	1.1-7.5

- NOTICE -  
THIS DOCUMENT CONTAINS PROPRIETARY INFORMATION OF DANFOSS DRIVES. IT IS LOANED BY DANFOSS DRIVES SUBJECT TO THE CONDITIONS THAT IT AND THE INFORMATION EMBODIED THEREIN SHALL BE USED ONLY FOR RECORD AND REFERENCE PURPOSES, SHALL NOT BE USED OR CAUSED TO BE USED IN ANY WAY PREJUDICIAL TO THE INTERESTS OF DANFOSS DRIVES, SHALL NOT BE REPRODUCED OR COPIED IN WHOLE OR IN PART OR DISCLOSED TO ANYONE WITHOUT THE DIRECT WRITTEN PERMISSION OF DANFOSS DRIVES, AND SHALL BE RETURNED UPON REQUEST.

PRO-E ENTRY BY/DATE:  
MG 3/02/07  
DESIGNED BY/DATE:  
MG 3/02/07  
APPROVAL:

CHECKED BY/DATE:  
MFG. APPROVAL BY/DATE:  
ENG. APPROVAL BY/DATE:  
TITLE:  
DWG, REF, SUBMITTAL, A2-A3-TIER 2



DANFOSS DRIVES  
4401 N. BELL SCHOOL RD., LOVES PARK, ILLINOIS 61111 USA  
(615) 639-9600 FAX (615) 639-9000

LATEST E.C.N. NO.: SPI0032	E.C.N. PRO-E ENTRY BY/DATE: SAK 04/30/10	PLOT SCALE: NONE	PRO-E FILE: APU_A2-A3_MAIN_T2-T3	SHEET: 1	OF: 1	DRAWING NO.:	REV.:
						176U8485	A

4

3

2

1