

- NOTICE -
 THIS DOCUMENT CONTAINS PROPRIETARY INFORMATION OF DANFOSS DRIVES. IT IS LOANED BY DANFOSS DRIVES SUBJECT TO THE CONDITIONS THAT IT AND THE INFORMATION EMBODIED THEREIN SHALL BE USED ONLY FOR RECORD AND REFERENCE PURPOSES. SHALL NOT BE USED OR CAUSED TO BE USED IN ANY WAY PREJUDICIAL TO THE INTERESTS OF DANFOSS DRIVES. SHALL NOT BE REPRODUCED OR COPIED IN WHOLE OR IN PART OR DISCLOSED TO ANYONE WITHOUT THE DIRECT WRITTEN PERMISSION OF DANFOSS DRIVES, AND SHALL BE RETURNED UPON REQUEST.

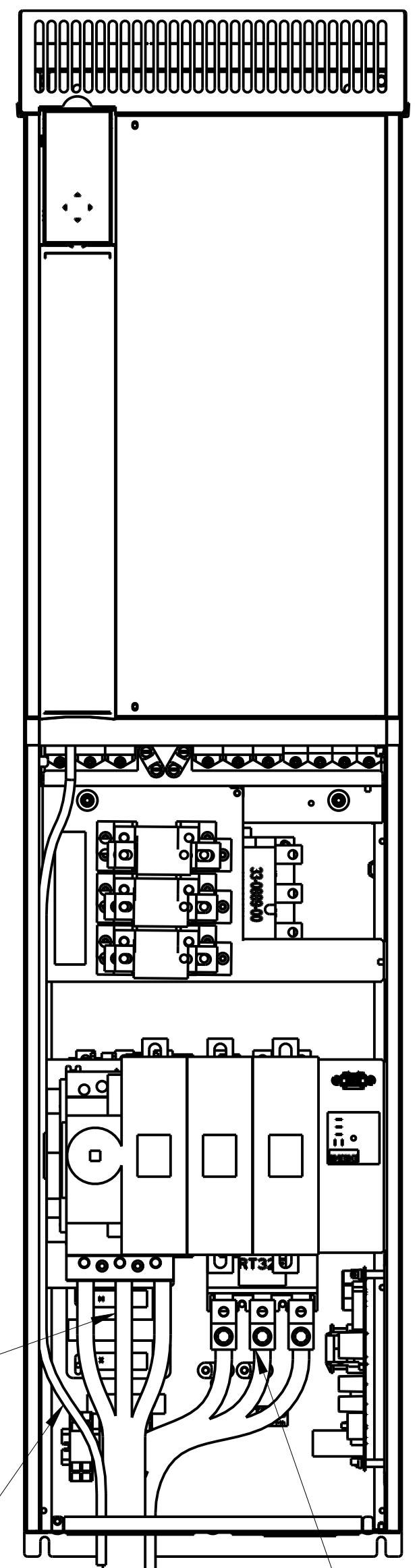
REVISION HISTORY			
REV	ECN NUMBER	ENTRY BY	DATE
002	LP11027	DK	5/11/2011

D

C

B

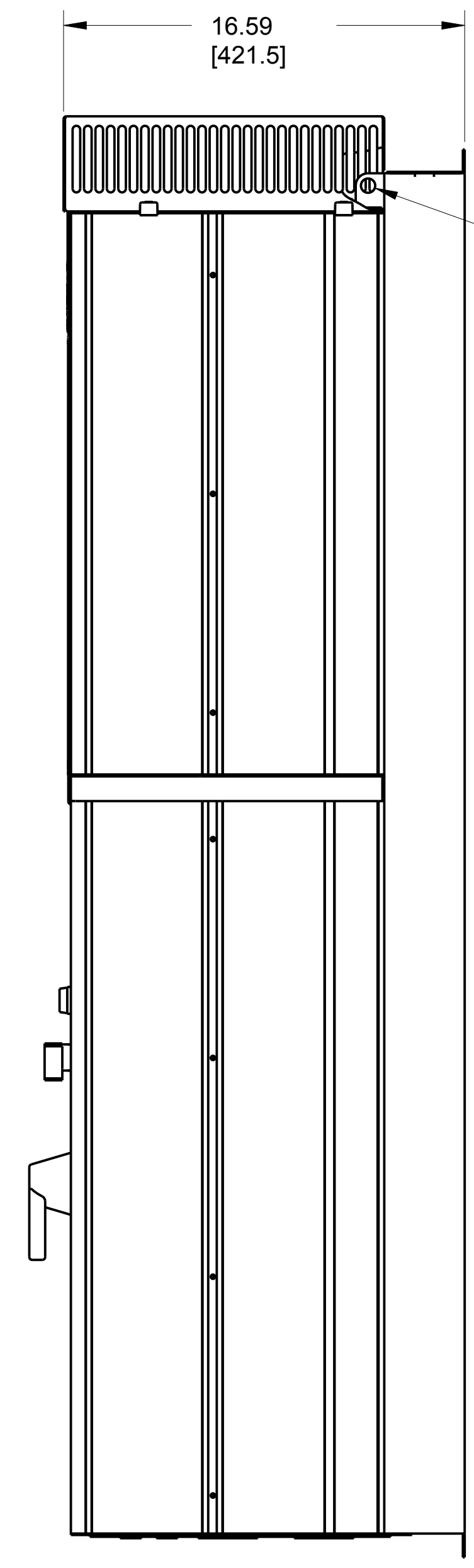
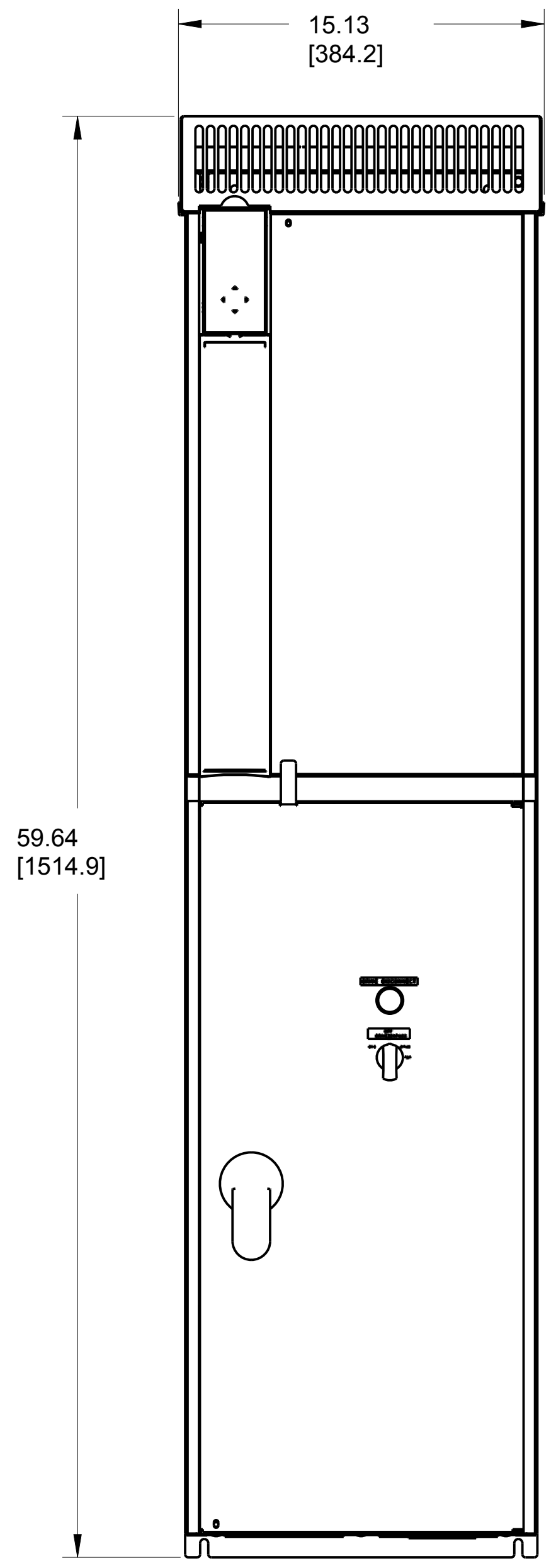
A



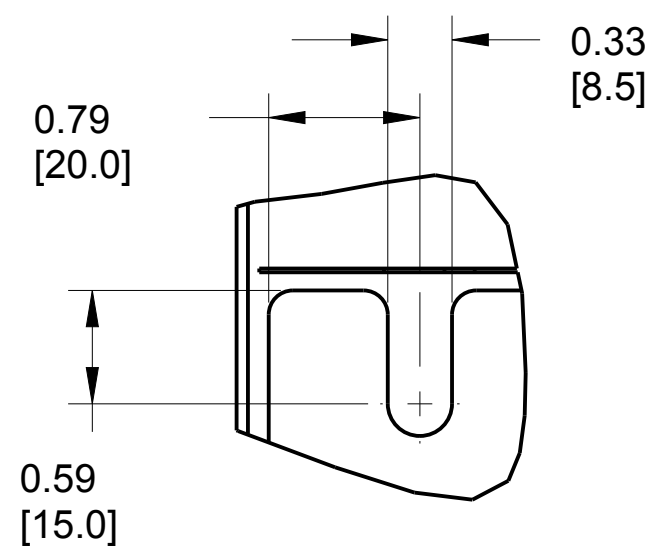
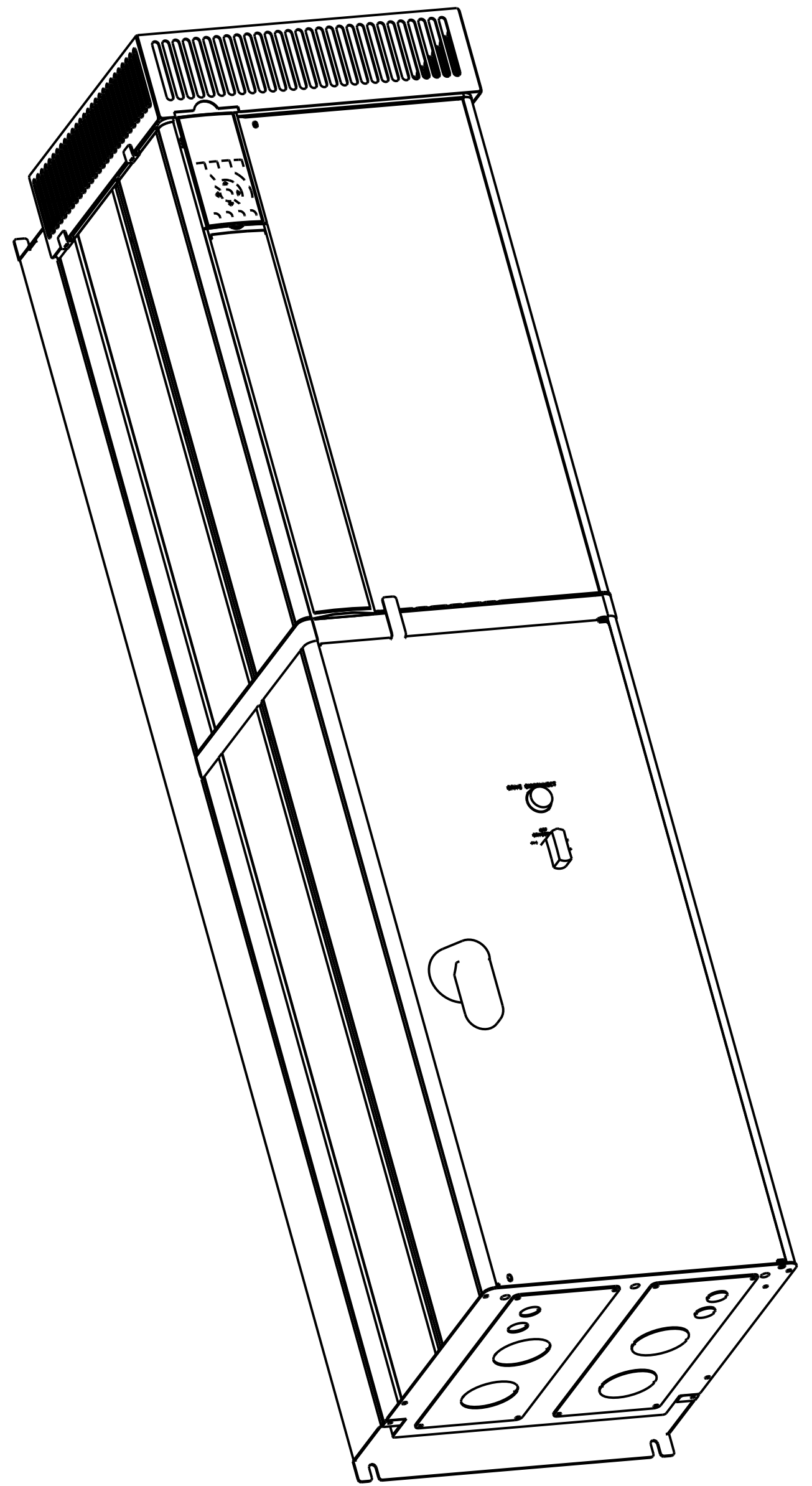
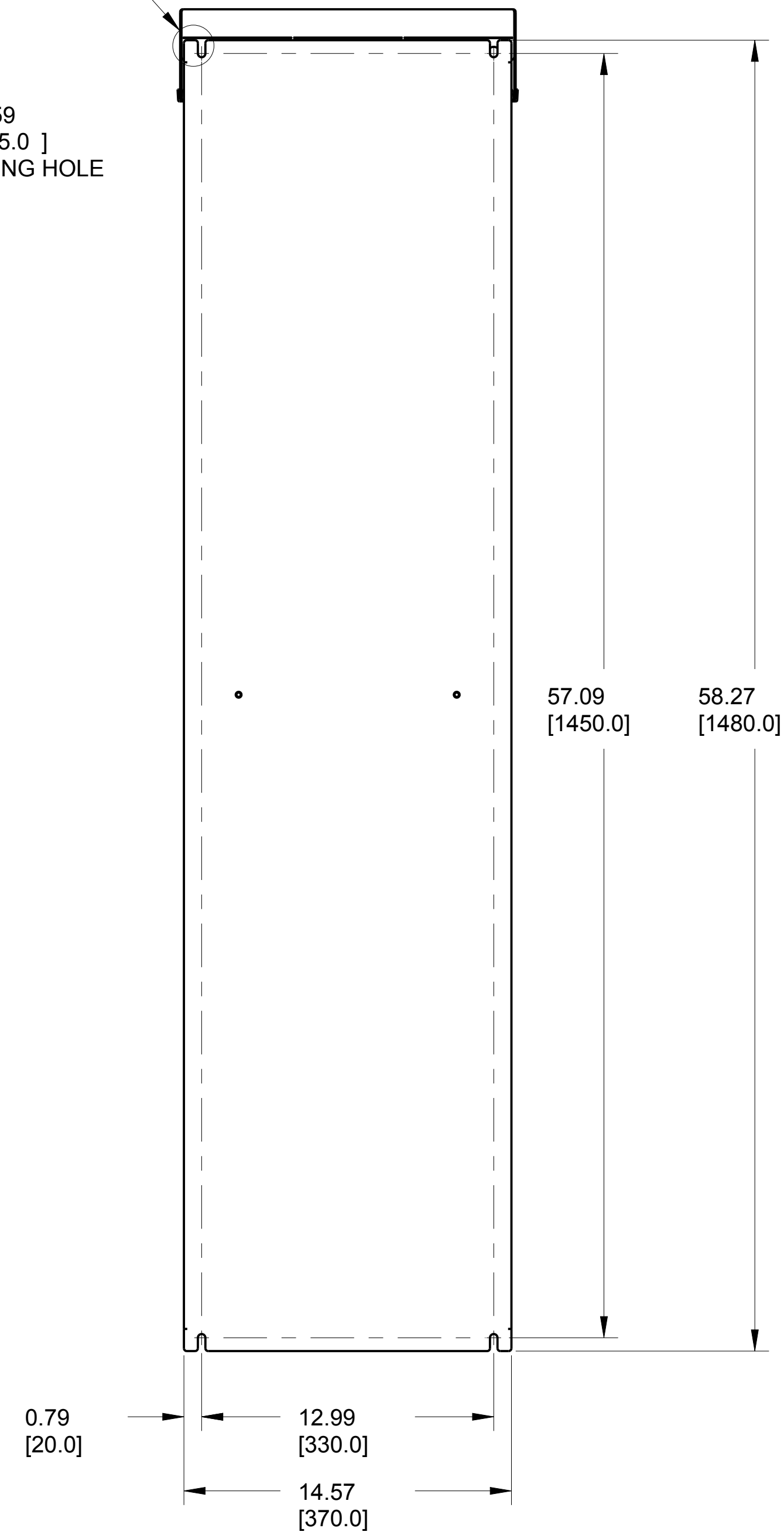
CUST. CONNECTION INPUT POWER L1 L2 L3 (LINE)
 CUST. CONTROL WIRING

CUST. CONNECTION POWER TO MOTOR T1 T2 T3 (LOAD)

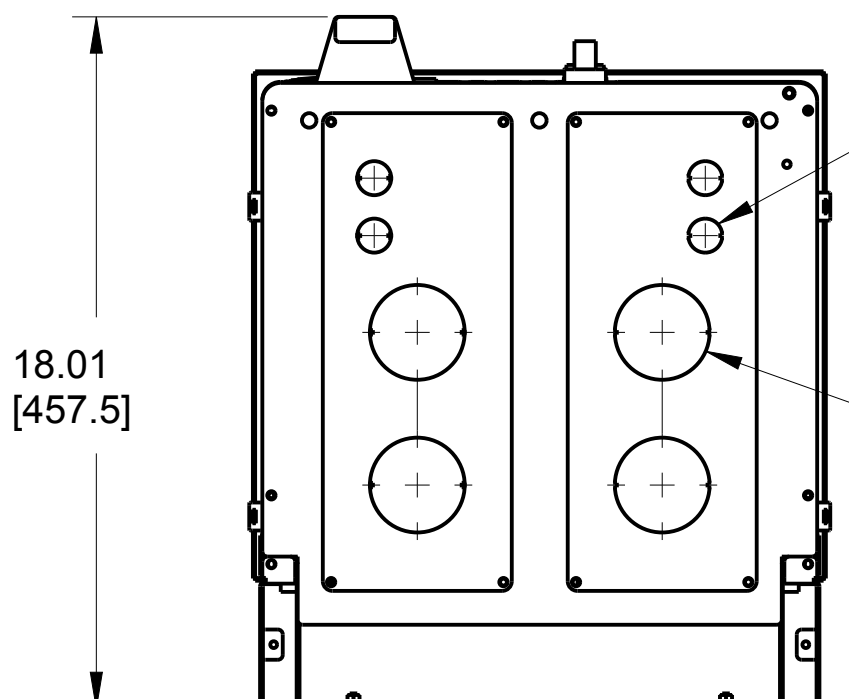
FRONT VIEW DOOR REMOVED



SEE DETAIL A
 Ø 0.59 [15.0] LIFTING HOLE



4X DETAIL A SCALE 1.000



4X KNOCKOUT FOR 1/2" CONDUIT (CUST. CONTROL WIRING)
 4X KNOCKOUT FOR 2" CONDUIT (CUST. POWER WIRING)

18.01 [457.5]

FRAME SIZE P5		
VOLTAGE	HP	KW
208	50	37
	60	45
230	50	37
	60	45
460	100	75
	125	90
575	100	75
	125	90

CLEARANCE REQUIREMENT FOR AIR FLOW COOLING:
 THE UNIT MUST BE INSTALLED VERTICALLY WITH THE MINIMUM CLEARANCE OF 8.86" [225mm] ON THE BOTTOM AND 2.00" [50.8 mm] ON THE TOP FOR UNIT COOLING.

UNLESS OTHERWISE SPECIFIED INTERPRET DIM. AND TOL. PER ASME Y14.5M-1994
 .X± 0.1 .XX± 0.01 ∠ ± 0.5
 DIM. ARE IN MILLIMETERS WEIGHTS ARE IN KILOGRAMS
 THIRD ANGLE PROJECTION

PROPERTIES			
MATERIAL			
FINISH			
THICKNESS			
EST. WEIGHT	248.0 Lbs [112.5 Kg]		
APPROVALS	INITIALS	DATE	
DRAWN	DK	08/23/10	
CHECKED			
ENGR			

Danfoss
 4401 N. BELL SCHOOL RD. LOVES PARK, ILLINOIS 61111 USA
 (615) 635-9600 FAX (615) 635-9000

DWG. SUBMITTAL, P5, BYPASS, P656

SIZE	D	MODEL	177R0237	REV	002
SCALE	0.200	DRAWING NO.	177R0207	SHEET	1 OF 1

D

C

B

A