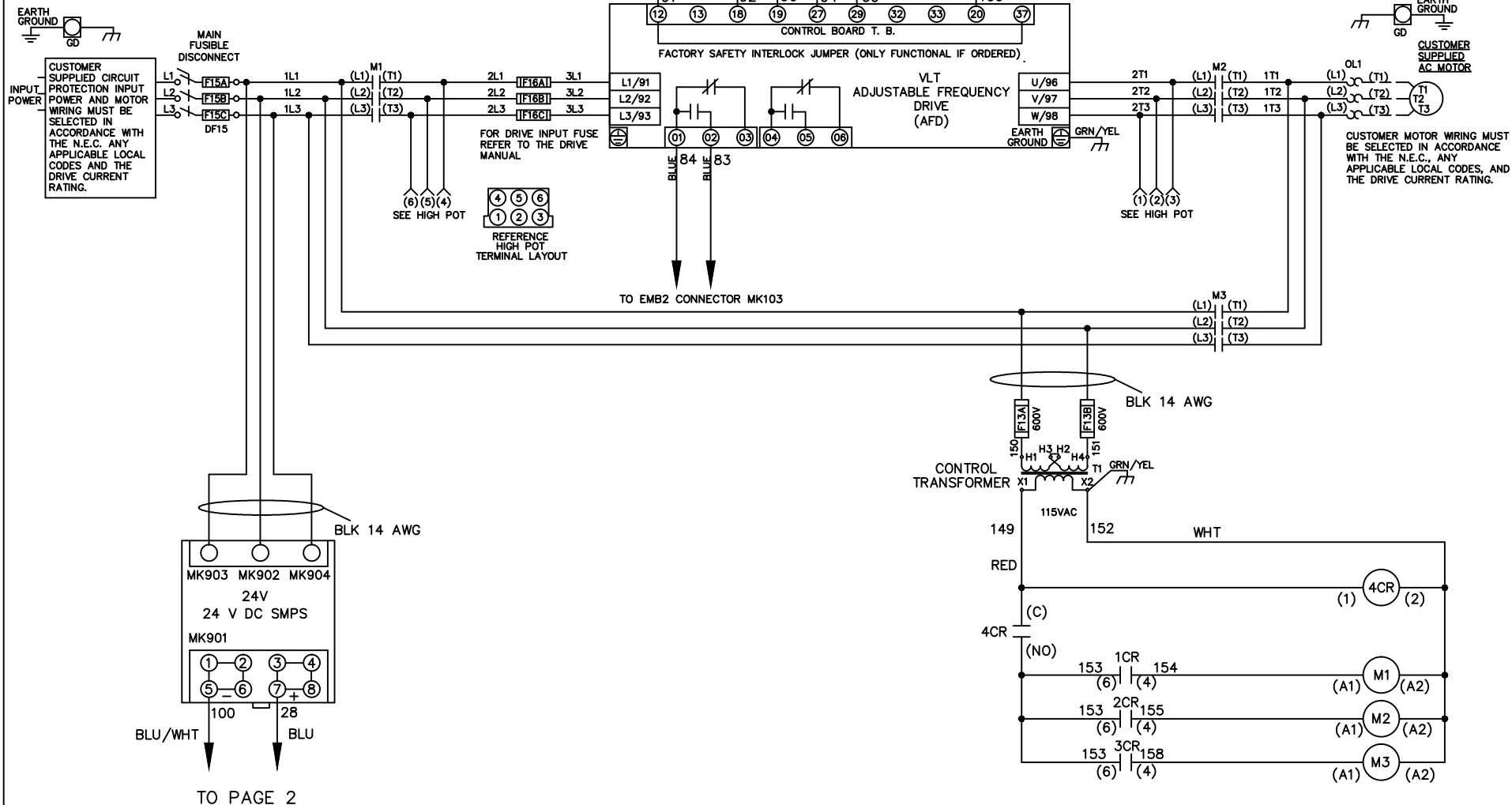


**WIRE COLOR SCHEME**  
 BLACK - LINE VOLTAGE  
 RED - AC CONTROL  
 WHITE - AC GROUNDED  
 CIRCUIT CONDUCTOR  
 BLUE - DC CONTROL  
 WHT/BLU - DC CONTROL COMMON  
 GREEN - CHASSIS GROUND



- NOTICE -

THIS DOCUMENT CONTAINS PROPRIETARY INFORMATION OF DANFOSS DRIVES. IT IS LOANED BY DANFOSS DRIVES SUBJECT TO THE CONDITIONS THAT IT AND THE INFORMATION EMBODIED THEREIN SHALL BE USED ONLY FOR RECORD AND REFERENCE PURPOSES. IT SHALL NOT BE USED OR CAUSED TO BE USED IN ANY WAY PREJUDICIAL TO THE INTERESTS OF DANFOSS DRIVES, SHALL NOT BE REPRODUCED OR COPIED IN WHOLE OR IN PART, OR DISCLOSED TO ANYONE WITHOUT THE DIRECT WRITTEN PERMISSION OF DANFOSS DRIVES AND SHALL BE RETURNED UPON REQUEST.

DRN JNW  
3/2/11  
APR

NAMEDWG,P5,  
EMB2,FD,  
460V,P656

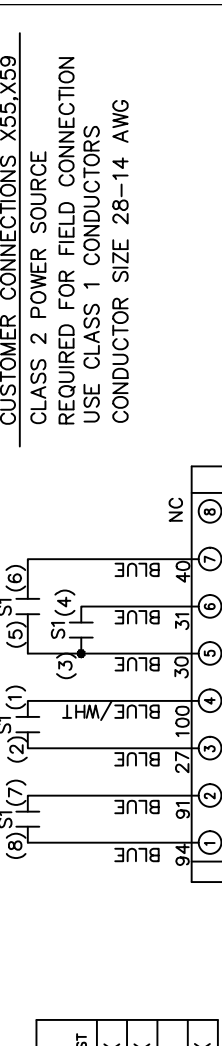


001  
REV ECN DATE

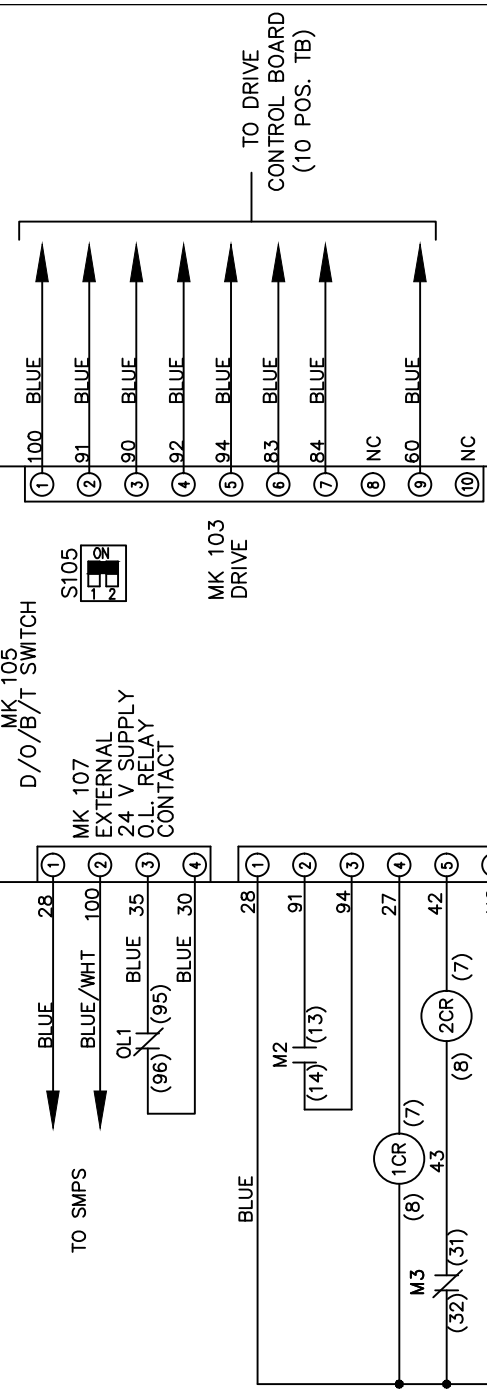
MODEL PAGE 1 OF 2 SIZE A DWG NO. 177R0267

CONTACT SEQUENCE CHART FOR S1  
X INDICATES CONTACT CLOSED

POSITION	DRIVE	OFF	BYPASS	TEST
CONTACT				
1-2	X			X
3-4			X	X
5-6	X			
7-8				X



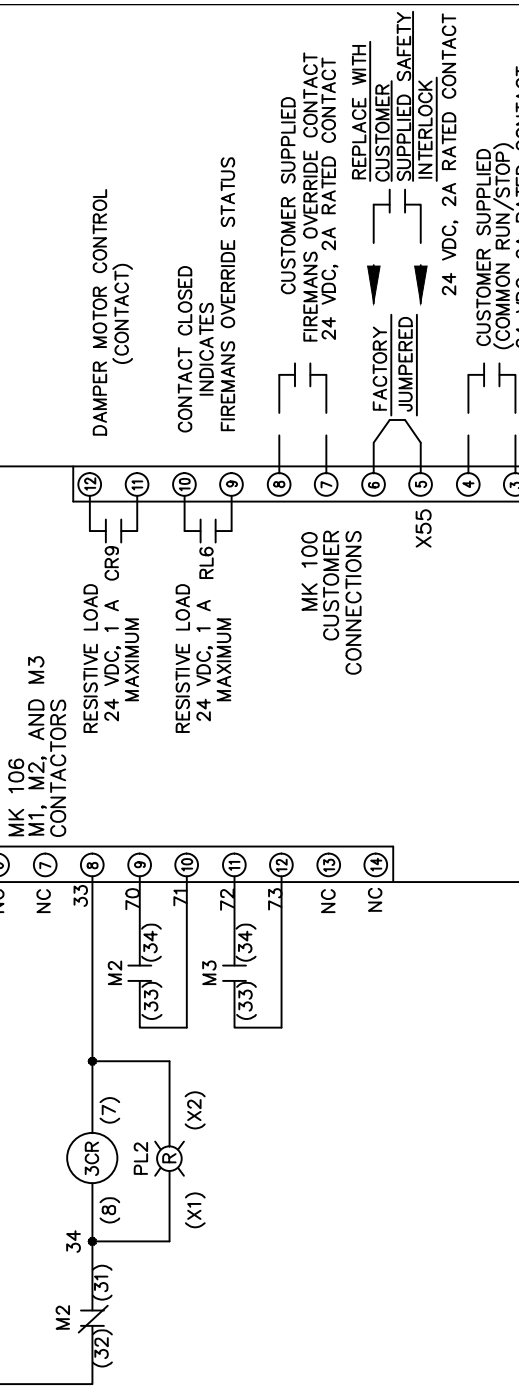
CUSTOMER CONNECTIONS X55, X59  
CLASS 2 POWER SOURCE  
REQUIRED FOR FIELD CONNECTION  
USE CLASS 1 CONDUCTORS  
CONDUCTOR SIZE 28-14 AWG



TO DRIVE CONTROL BOARD (10 POS. TB)

TO SMPS

TO DRIVE CONTROL BOARD (10 POS. TB)



DAMPERS MOTOR CONTROL (CONTACT)

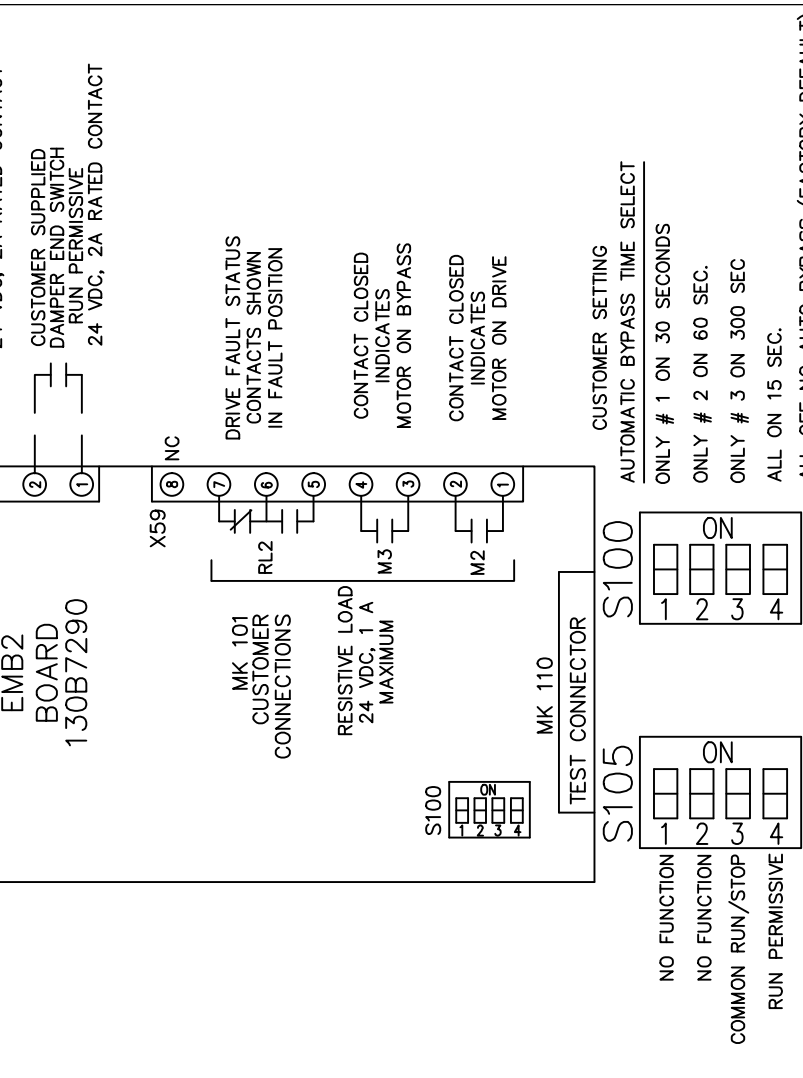
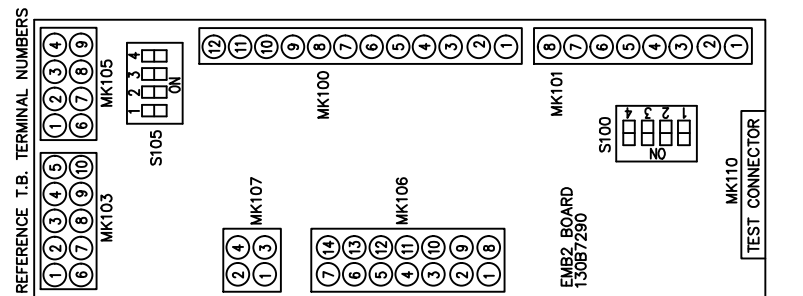
CONTACT CLOSED INDICATES FIREMANS OVERRIDE STATUS

CUSTOMER SUPPLIED FIREMANS OVERRIDE CONTACT 24 VDC, 2A RATED CONTACT

REPLACE WITH CUSTOMER SUPPLIED SAFETY INTERLOCK 24 VDC, 2A RATED CONTACT

CUSTOMER SUPPLIED (COMMON RUN/STOP) 24 VDC, 2A RATED CONTACT

CUSTOMER SUPPLIED DAMPER END SWITCH RUN PERMISSIVE 24 VDC, 2A RATED CONTACT



DRIVE FAULT STATUS CONTACTS SHOWN IN FAULT POSITION

CONTACT CLOSED INDICATES MOTOR ON BYPASS

CONTACT CLOSED INDICATES MOTOR ON DRIVE

CUSTOMER SETTING AUTOMATIC BYPASS TIME SELECT

ONLY # 1 ON 30 SECONDS

ONLY # 2 ON 60 SEC.

ONLY # 3 ON 300 SEC

ALL ON 15 SEC.

ALL OFF NO AUTO BYPASS (FACTORY DEFAULT)

001		
REV	ECN	DATE

- NOTICE -  
THIS DOCUMENT CONTAINS PROPRIETARY INFORMATION OF DANFOSS DRIVES. IT IS LOANED BY DANFOSS DRIVES SUBJECT TO THE CONDITIONS THAT IT AND THE INFORMATION EMBODIED THEREIN SHALL BE USED ONLY FOR RECORD AND REFERENCE PURPOSES, SHALL NOT BE USED OR CAUSED TO BE USED IN ANY WAY PREJUDICIAL TO THE INTERESTS OF DANFOSS DRIVES, SHALL NOT BE REPRODUCED OR COPIED IN WHOLE OR IN PART, OR DISCLOSED TO ANYONE WITHOUT THE DIRECT WRITTEN PERMISSION OF DANFOSS DRIVES AND SHALL BE RETURNED UPON REQUEST.

DRN JNW  
3/2/11  
APR

NAMEDWG,P5,  
EMB2,FD,  
460V,P656  
MODEL